



Freezer

FFN09M5H W

Manual Defrost
9 Cu. Ft. Chest



Product Dimensions

Height (Including Lid)	34-1/4"
Width	41"
Depth	23-1/4"

More Easy-To-Use Features

Side-Mounted Adjustable Temperature Control

Adjustable Temp Control

Lift-Up Lid Handle

ENERGY STAR®



Available in:



White
(W)

Signature Features

Store-More™ Removable Basket

Convenient lift-out storage for easy access to most small frozen items or items that are most frequently accessed

Power-On Indicator Light

Know at a glance that your freezer is working.

Defrost Water Drain

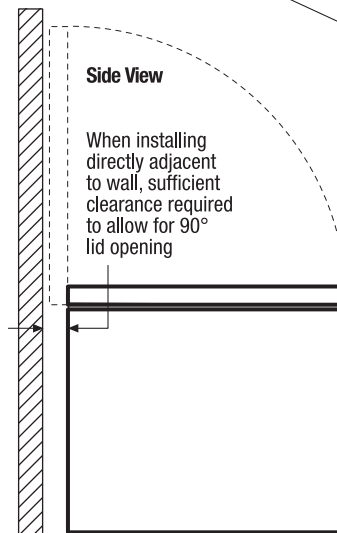
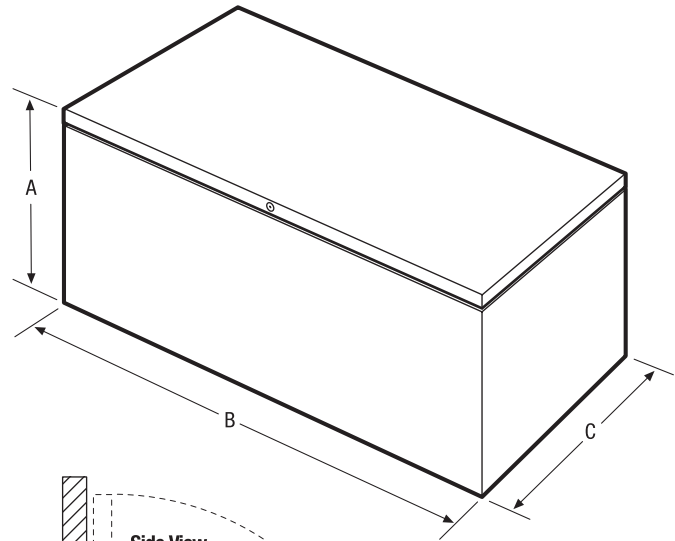
Use the drain to conveniently remove water during defrosting.

Lock with Pop-Out Key

Key is automatically ejected upon locking for maximum security.

Features	
Defrost	Manual
Adjustable Temperature Control	Yes
Interior Lighting	Bright
Store-More™ Removable Baskets	2
Food Organization System	
Defrost Water Drain	Yes
Lid Handle	Yes
Lock with Pop-Out Key	Yes
Temp Alarm System	
Power-On Light	Yes
Certifications	
ENERGY STAR®	Yes
CSA Rating	Household
Specifications	
Total Capacity (Cu. Ft.)	8.8
Annual Energy (kWH)	264
Annual Energy Cost (.1065/kWH)	\$28
Power Supply Connection Location	Bottom Rear
Voltage Rating	115V / 60Hz / 5A
Connected Load (kW rating) @ 115 Volts ¹	.6
Amps @ 115 Volts	5
Minimum Circuit Required (Amps)	15
Shipping Weight (Approx.)	127 Lbs.

¹An electrical supply with grounded three-prong receptacle is required. The power supply circuit must be installed in accordance with current edition of National Electrical Code (NFPA 70) and local codes & ordinances.



NOTE: For planning purposes only. Always consult local and national electric codes. Refer to Product Installation Guide for detailed installation instructions on the web at frigidaire.com.



Product Dimensions	
A - Height (Including Lid)	34-1/4"
B - Width	41"
C - Depth	23-1/4"
D - Height with Lid Open 90°	55-5/16"

Accessories information available on the web at frigidaire.com