



VG491210CA
Vario gas cooktop 400 series
Stainless steel
Width 36"
Equipped for natural gas.

Five multi-ring burners with up to 60,000 BTU
 Electronic flame monitoring (ionization principle) with automatic re-ignition.
 Sturdy stainless steel, solid smooth-surface cast-iron pan supports and large professional front control knobs.
 Precision crafting of 1/8-inch stainless steel
 For surface mount installation with a visible edge or for flush installation
 Can be perfectly combined with other Vario 400 series products

Cooking zones
 1 three-ring wok burner (300 W – 5500 W) 1,000-18,800 BTU, suitable for pots up to max. ø 12 5/8".
 2 two-ring high output burners (160 W – 4000 W) 700-13,500 BTU, suitable for pots up to max. ø 11".
 2 two-ring standard burners (160 W – 2000 W) 700-7,000 BTU, suitable for pots up to max. ø 11".

Operation
 Control knob with ring and output marking.
 One-handed operation.
 Gas valve with fine control.

Features
 Three-part cast-iron pan support with flat, continuous pot surface.
 Brass burner rings.

Safety
 Electronic flame monitoring with automatic re-ignition.
 Automatic quick ignition.
 Safety lock.

Planning notes
 Depending on the type of installation - surface-/ or flush-mounted, with or without cover - the specific location of the control knob positions may vary.
 When using the appliance cover VA 440 or adjustment strip VA 450 additional space for cut-out depth needs to be considered.
 In a combination of Vario cooktops with at least one appliance cover, the adjustment strip VA 450 is required.
 In a combination of several Vario 400 series cooktops a connection strip must be used. Depending on the type of installation - surface-/ or flush-mounted, with or without cover - the respective VA 420 connecting strip must be used.
 For flush installation the edge height in the cut-out needs to be at least 1/2" and for surface-mount 3/8". Ensure a continuous cut surface of 90°.
 The weight capacity and stability, especially in case of thin countertops, must be supported using suitable substructures. Take the appliance weight and additional loads into account.
 Flush installation is possible in countertops made of stone, synthetics or solid wood. Heat resistance and watertight sealing of the edges must be observed. For other materials, please consult with your countertop manufacturer.
 The groove must be continuous and even, so that uniform placing of the appliance on the gasket is ensured. Do not use discontinuous lining.

Product Features
Product name / series name
 gas hob w integrated controls
Construction type
 CONSTR_TYPE.Built-in
Energy source
 Gas
Total number of cooktop burners
 5
Required cutout size (HxWxD) (mm)
 132 x 887 x 492
Width of the product (mm)
 908
Overall appliance dimensions (HxWxD) (mm)
 132 x 908 x 520
Net weight (kg)
 32.0
Gross weight (kg)
 35.0
Residual heat indicator
 without
Location of control panel
 External control
Basic surface material
 brushed stainless steel
Color of surface
 Stainless steel, Stainless steel
Color of frame
 Stainless steel, Stainless steel
Approval certificates
 ETL
Power cord length (cm)
 140

Consumption and connection features
Watts (W)
 15
Gas connection rating (W)
 17500
Current (A)
 2
Volts (V)
 120
Frequency (Hz)
 60
2016-10-07
 Page 1

The joint width may vary due to size tolerances of the combinations and of the countertop cut-out.
 If installing several Vario products in individual cut-outs allow for a minimum distance of 2" inbetween the cooktops. Control knobs to be integrated in the base cabinet at drawer level.
 Panel thickness 5/8" - 1".
 The drawing "Installation of the control knob" must be observed, if the panel is more than 1" thick. There must be a recess at the rear for proper control module installation.
 Special nozzles can be ordered as spare parts.
 Plan for an electrical connection (the appliance is not operable without power supply).
 Air intake from above.
 No intermediate shelf required.
 The rear panel must consist of a non-flammable material. Wall trims must be resistant to heat.
 A minimum lateral clearance of at least 12" from adjacent heat-sensitive furniture or contact surfaces must be observed or thermal insulation fitted.
 Installation in a 36" wide lower cabinet is required.
 The combination with VL 414 downdraft is not recommended. Due to the distance to the center burner sufficient air extraction cannot be guaranteed.
 Minimum distance between gas cooktop(s) with more than 40,000 BTU and ventilation hood must be 27 9/16".
 Appliance can be snapped into the countertop from above.

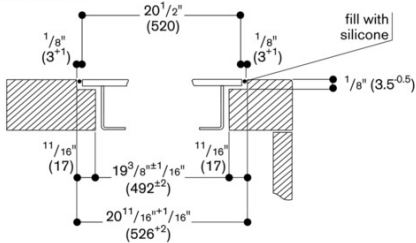
Rating
 Total connected load gas 59,800 BTU
 17.5 kW.
 Total Amps: 2 A.
 120 V / 60 Hz
 Connecting cable 55" with plug.

Color Variants
VG491210CA
Stainless steel
Width 36"

Optional accessories
WP400001
Wok pan made of multiple-layer material

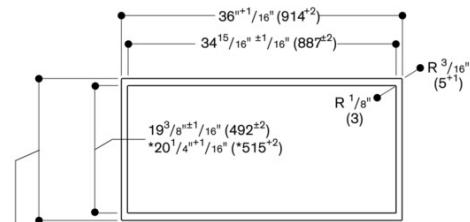
Installation Accessories
SV405001
Shaft extension up to 3 1/8"
SV405002
Shaft extension up to 6 5/16"
SV405003
Shaft extension up to 12 5/8"
SV405011
Shaft extension up to 2 9/16"
SV405012
Shaft extension for up to 5 1/2"

Cross-section



For installation with appliance cover or adjustment bar, observe the deeper notch and the slot width front and back.

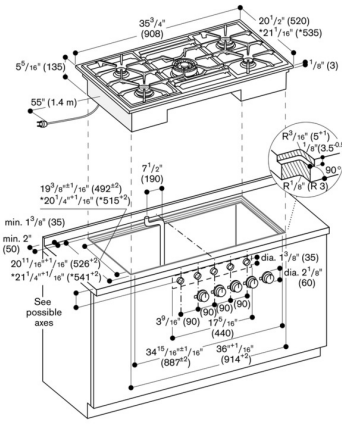
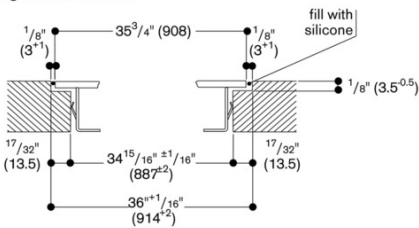
View from above



$20\frac{11}{16}'' \pm \frac{1}{16}''$ (526^{+2})
 $21\frac{1}{4}'' \pm \frac{1}{16}''$ (541^{+2})

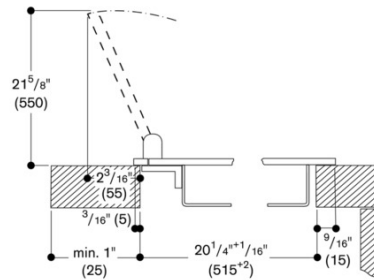
* with adjustment strip

Longitudinal section

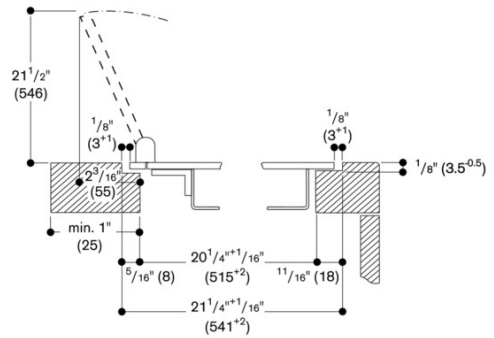


* with alignment strap.
 See separate planning notes.

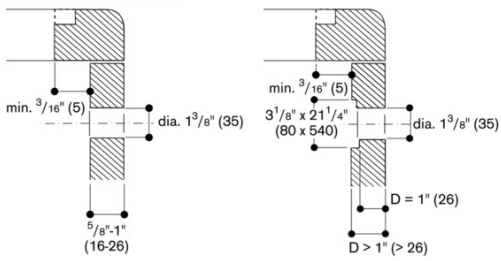
Installation with appliance cover/adjustment strip;
 surface installation



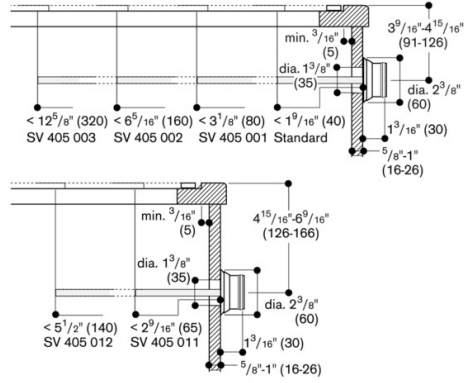
Installation with appliance cover/adjustment strip;
 Flush Installation



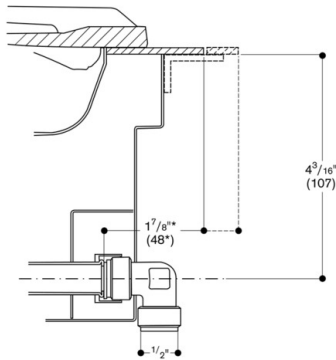
Installation of the control knob



Possible spindle extensions, flush installation.



Gas connection



* 2 1/2" (63 mm) with adjustment strip.

Possible spindle extensions, surface installation.

