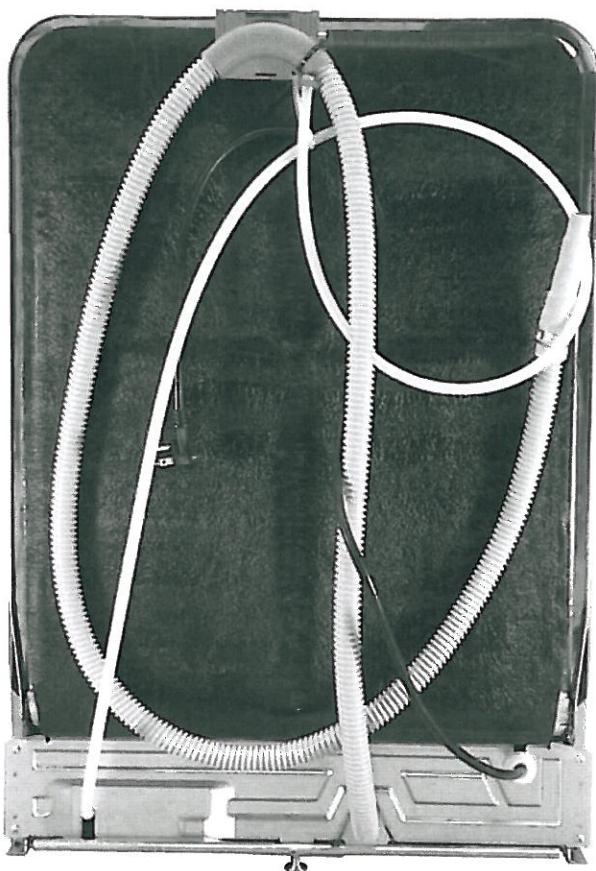


EASYINSTALL™ DISHWASHERS

ASKO's dishwashers come with all the connections you need. We've eliminated the need to get into the electrical and mechanical area, which makes installation simple and quick. If a dishwasher is being installed in an area for the first time, most of the cabinetwork, plumbing, and electrical has to be done before you move the machine into place. If you are replacing an old dishwasher, you must check the plumbing connection and wiring before you install the new dishwasher.

This system has these components which have been approved by regulatory authorities (cULus):

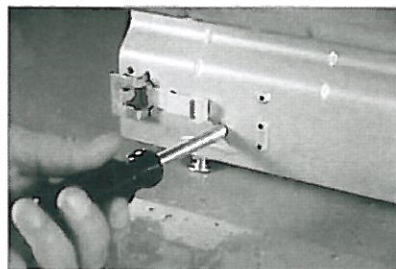
- Over 5' of Pex hose that replaces the water-inlet copper tubing. It has a $\frac{3}{8}$ " compression fitting that mates with a $\frac{3}{8}$ " shut-off valve. Length: 5'2" from back of unit.
- Over 6' of drain hose with an adaptable drain connection. The high loop is built into this hose on the back of the unit. Length: 53" past fixed high loop from back of unit.
- An electrical cord (approximately 42") with standard, 3-pronged, 120V plug. This eliminates the need to wire anything under the unit.
- Front-adjustable rear leg (select XXL models). You can raise or lower the rear leg from the front of the unit.



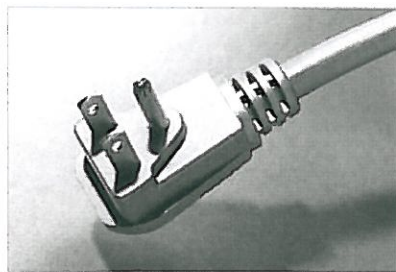
Back of ASKO dishwasher with EasyInstall™ system.



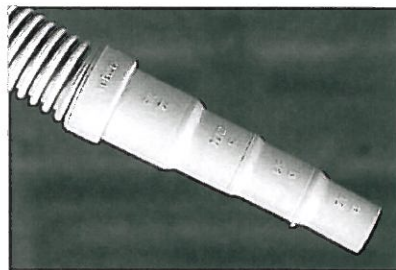
Pex hose with $\frac{3}{8}$ " brass fitting.



Front-adjustable rear leg
(select XXL models).



Already wired with a standard
three-pronged plug.



Drain hose with multiple size adaptor