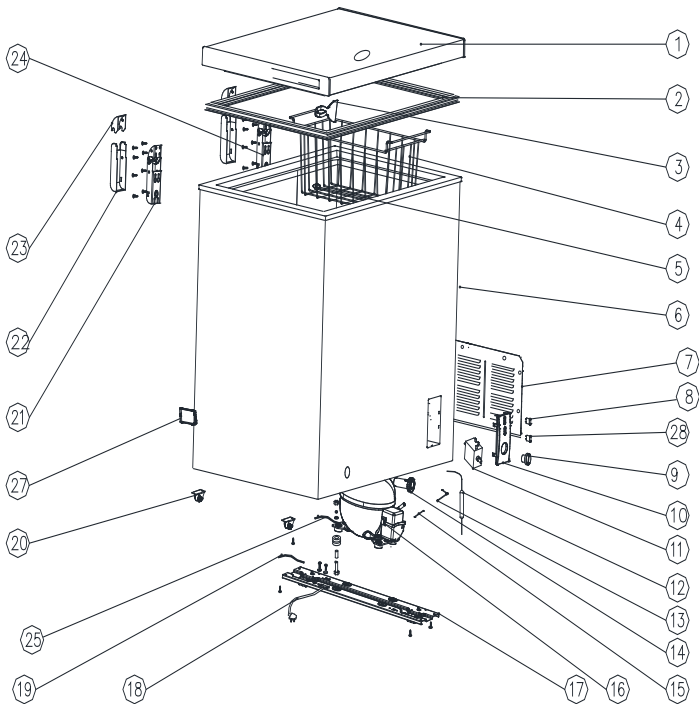


Exploded view



CF35B2P Parts list

| No. | Parts code | Description of Spare Part | Quantity |
|-----|-------------|-------------------------------|----------|
| 1 | 2150110039 | Door | 1 |
| 2 | 2200200013 | Door gasket | 1 |
| 3 | 20122990706 | Ice scoop | 1 |
| 4 | 3039900254 | Food box | 1 |
| 5 | 2207700028 | Drain-pipe plug | 1 |
| 7 | 2304520005 | Cover of compressor,side wall | 1 |
| 8 | 3050500015 | Running indicator light | 1 |
| 9 | 2207100027 | Thermostat knob | 1 |
| 10 | 2207100135 | Thermostat display card | 1 |
| 11 | 2400200004 | Thermostat | 1 |
| 12 | 3040500011 | Drier filter | 1 |
| 13 | 20114070006 | Connecting tube | 1 |
| 14 | 2207700025 | Drain-pipe decorative cover | 1 |
| 15 | 3040600005 | Process tube | 1 |
| 16 | 2400100017 | compressor | 1 |
| 17 | 20105050013 | Compressor base support | 1 |
| 18 | 2500100019 | Power supply cord plug | 1 |
| 19 | 3050200284 | Connecting wire of compressor | 1 |
| 20 | 20122990708 | Scroll wheel | 2 |
| 21 | 3031400173 | Door hinge assembly | 1 |
| 22 | 2208200025 | Cover of door hinge | 2 |
| 23 | 2208200024 | Cover of door hinge | 2 |
| 24 | 3031400174 | Door hinge assembly | 1 |
| 25 | 3050200095 | Earthing wire of compressor | 1 |
| 27 | 2208100292 | Cover of the wire | 1 |
| 28 | 3050500019 | Indicator light | 1 |