

Job Name/Location:

Tag #:

Date:

For:  File  Resubmit

PO No.:

Approval  Other \_\_\_\_\_

Architect:

GC:

Engr:

Mech:

Rep:

(Company)

(Project Manager)



**LSN120HSV4**  
Multi F Standard  
12,000 Btu/h Indoor Unit



**Performance:**

|                                  |        |
|----------------------------------|--------|
| Nominal Cooling Capacity (Btu/h) | 12,000 |
| Nominal Heating Capacity (Btu/h) | 13,800 |

Cooling Nominal Test Conditions:

Indoor: 80°F DB/67°F WB

Outdoor: 95°F DB/75°F WB

Heating Nominal Test Conditions:

Indoor: 70°F DB/60°F WB

Outdoor: 47°F DB/43°F WB

**Electrical:**

|                                     |              |
|-------------------------------------|--------------|
| Power Supply (V <sup>1</sup> /Hz/Ø) | 208-230/60/1 |
| Rated Amps (A)                      | 0.20         |

**Pipe Connections:**

|                    |            |
|--------------------|------------|
| Liquid (in, OD)    | 1/4        |
| Vapor (in, OD)     | 3/8        |
| Drain OD, ID (in)  | 13/16, 5/8 |
| Temperature Sensor | Thermistor |

**Controls Features:**

- 4-Way auto swing
- 24-Hour on/off timer
- Auto operation
- Auto restart
- Chaos wind
- Inverter (variable speed fan)
- Jet Cool
- 3M HAF filter
- Self-cleaning indoor coil
- Sleep mode
- Condensate sensor connection
- Group control
- Smart AC module
- Compatible with Single Zone HSV4 ODU

**Included Accessories:**

- Wireless Remote Controller - AKB73835312

**Optional Accessories:**

- LG Programmable Thermostat - PREMTB10U
- Simple Controller with Mode (Black) - PQRCVCL0Q
- Simple Controller with Mode (White) - PQRCVCL0QW
- Simple Controller without Mode (Black) - PQRCHCA0Q
- Simple Controller without Mode (White) - PQRCHCA0QW
- AC Smart IV - PACS4B000.ENCXLUS
- ACP IV - PACP4B000.ENCXLUS
- LonWorks® Gateway - PLNWKB100
- ACP IV BACnet® Gateway - PQNFB17C1
- Dry Contact Unit (1 contact, 24 VAC external power) - PQDSB1
- Dry Contact Unit (2 input, power from indoor unit) - PQDSBC
- Dry Contacts for third party thermostat - PQDSBNGCM1 or PDRYCB300

For a complete list of available accessories, contact your LG representative.

**Entering Mixed Air:**

|                 |       |
|-----------------|-------|
| Cooling (°F WB) | 57-77 |
| Heating (°F DB) | 59-81 |

**Unit Data:**

|  |                     |
|--|---------------------|
| Refrigerant Type                             | R410A               |
| Refrigerant Control                          | EEV                 |
| Sound Pressure <sup>2</sup> H/M/L (±3 dB(A)) | 39/36/31            |
| Primary Filter                               | Washable Pre-filter |
| Secondary Filter                             | 3M HAF              |
| Net Unit Weight (lbs)                        | 20                  |
| Shipping Weight (lbs)                        | 26                  |

**Fan:**

|                          |                                       |
|--------------------------|---------------------------------------|
| Type                     | Cross Flow                            |
| Quantity                 | 1                                     |
| Motor/Drive              | Brushless Digitally Controlled/Direct |
| Airflow Rate H/M/L (CFM) | 335/318/300                           |

**Notes:**

1. Acceptable operating voltage: 187V - 253V.
2. Sound Pressure levels are tested in an anechoic chamber under ISO Standard 1996.
3. See Engineering Manual for sensible and latent capacities.
4. All power/communication cable to be minimum 18 AWG, 4-conductor, stranded, shielded and must comply with applicable local and national code.
5. Power wiring cable size must comply with the applicable local and national code.
6. This unit comes with a dry helium charge.
7. Corresponding refrigerant piping length is in accordance with standard length of each outdoor unit and the level difference is 0 ft. All capacities are net with a combination ratio between 95 - 105%
8. Must follow installation instructions in the applicable LG installation manual.



Job Name/Location:

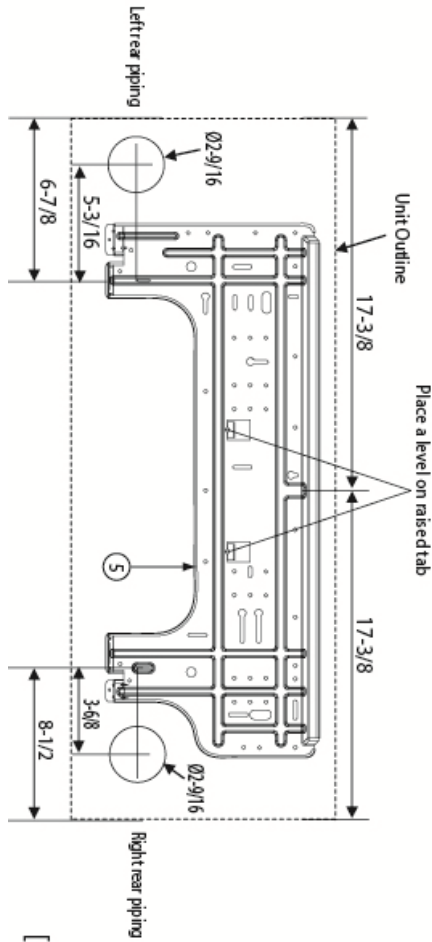
**LSN120HSV4**  
**Multi F Standard**  
**12,000 Btu/h Indoor Unit**



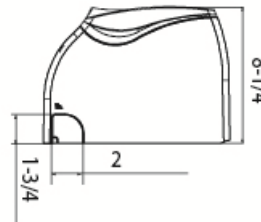
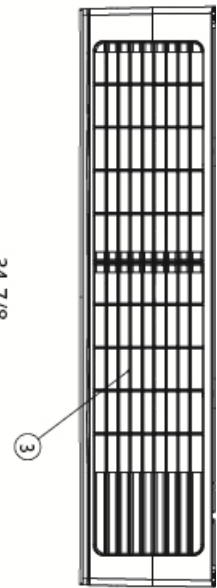
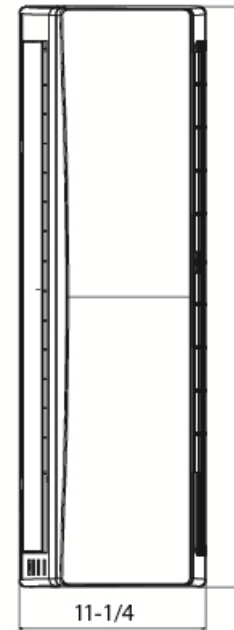
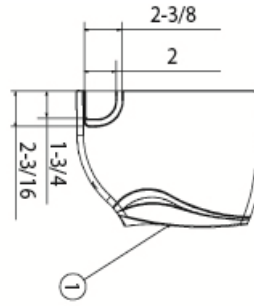
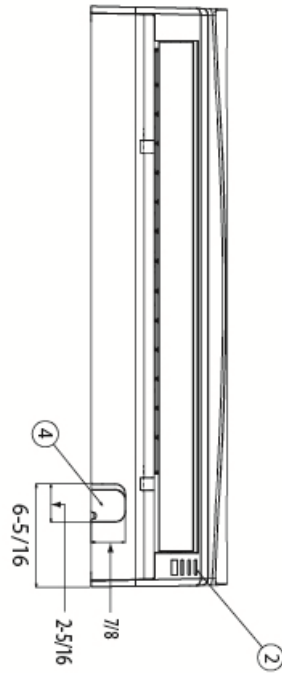
Tag #: \_\_\_\_\_

Date: \_\_\_\_\_

PO No.: \_\_\_\_\_



[Unit : inch]



| Item No. | Part Name                 | Remark             |
|----------|---------------------------|--------------------|
| 1        | Front Panel               |                    |
| 2        | Display & Signal Receiver |                    |
| 3        | Return Air Grille         |                    |
| 4        | Knockout hole             | For pipe and cable |
| 5        | Installation Plate        |                    |