

SAMSUNG

SERIES **8**
8000

QUICK START GUIDE



BN68-05037A-01

Welcome to your new Smart TV!

The following instructions cover assembling, connecting, and setting up your new TV. Make sure you have the accessories listed below.

Included in this box

Remote Control	Stand Parts and Cables		
Smart Touch Control	Screw Cover x 2	Power inlet cover	Cable clip
Batteries (AAA x 2)	Wall mount adapter x 2	TV holder kit	Power cord
	RCA Adapter x 2	Component adapter	IR extender

Also included: User manual, regulatory guide, 3D Active Glasses

Attach the TV to the Stand

Step 1

Connect video devices

Step 2

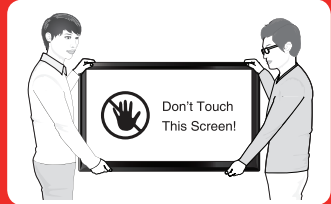
Insert the batteries into the remote control

Step 3

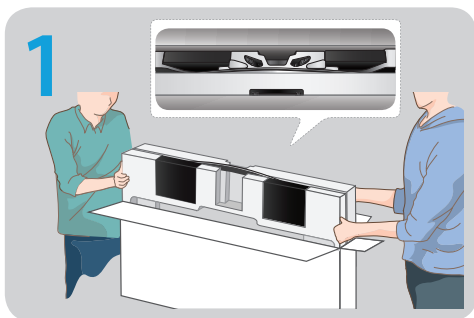
Power on and start the initial setup

Step 4

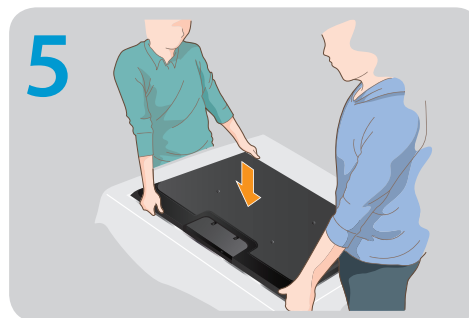
Warning: Screens can be damaged from direct pressure when handled incorrectly. We recommend lifting the TV by the edges, as shown.



Step 1 Attach the TV to the Stand

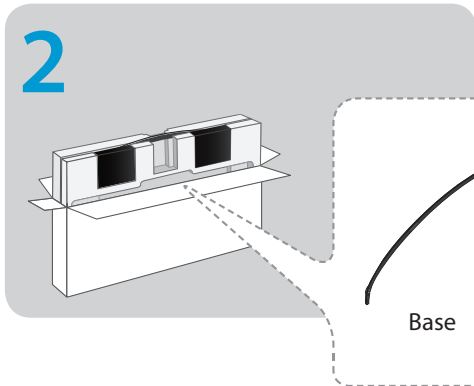


Open the package, and take the cushioning out of it.



Lay the TV on a soft surface, screen side down. Use the packing material to protect the screen.

REQUIRED TOOLS: a Phillips head screwdriver and a soft, flat surface larger than the TV (such as the box).

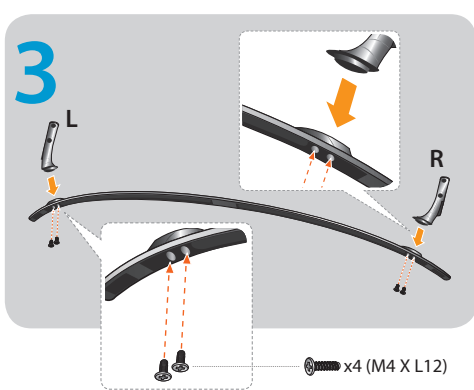


Put a base, legs and screws off to assemble the stand out of the box.

Base Leg Screws

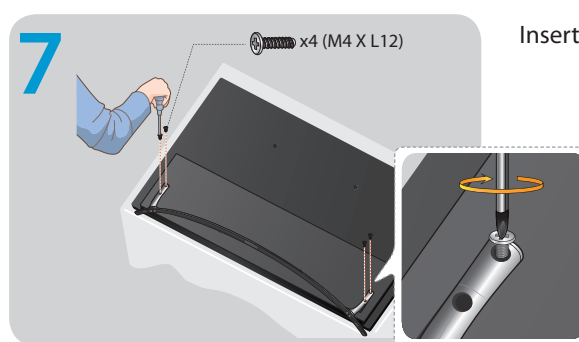


Holding the stand parallel to the screen, slide the stand legs into the notches on the back of the TV.

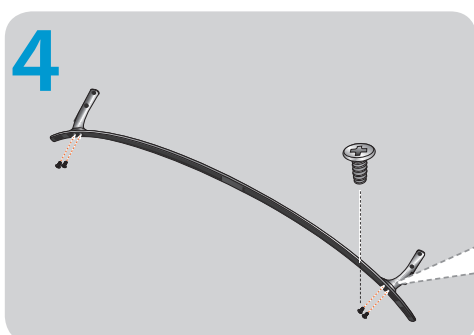


Fit the base and legs together, making sure that the legs are firmly aligned with the base. See the diagram below.

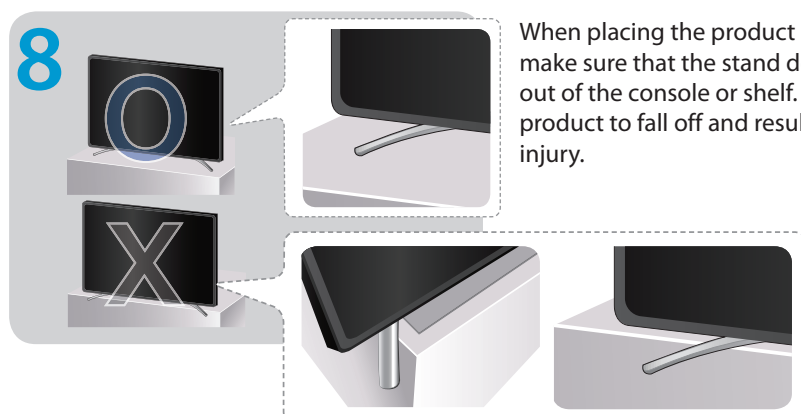
x4 (M4 X L12)



Insert 4 screws and secure the stand to the TV.



Insert 2 screws through the base into each leg as shown, and then secure the legs to the base with a screwdriver.

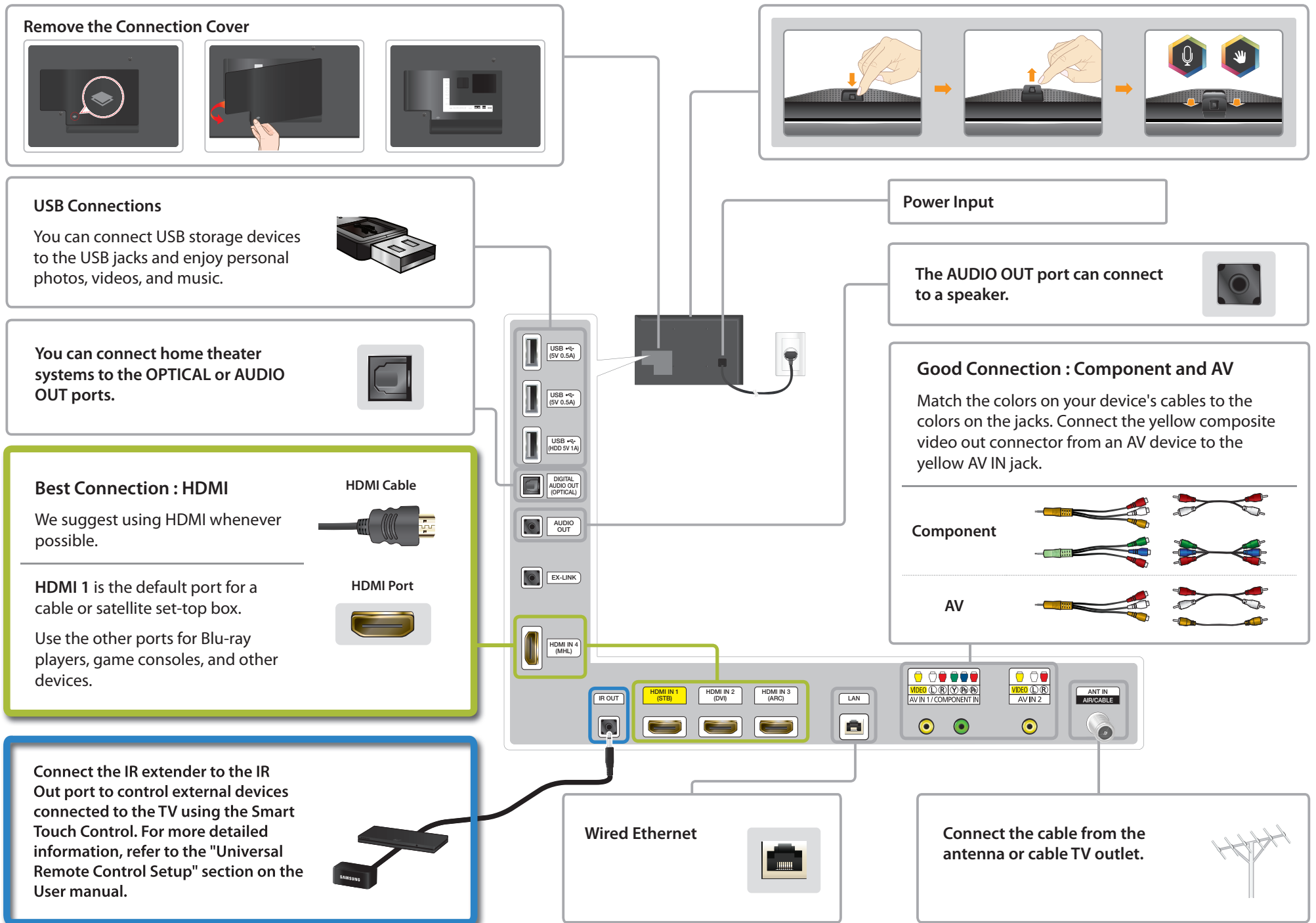


When placing the product on a console or shelf, make sure that the stand does not protrude out of the console or shelf. This may cause the product to fall off and result in a malfunction or injury.

Step 2 Connect video devices

We suggest using HDMI connections whenever possible for the best picture quality. Use the included AV adapter to connect older devices.

The displayed image may differ depending on the model.



Step 3 Insert the batteries into the remote control

To open, put your plastic card into the notch.



Make sure you have the correct cable before plugging it in. Illustrations of common plugs and jacks are shown below.

	Cable Plugs	Ports / Jacks
HDMI		
USB		
Optical		

Warning Do not plug cables in upside down. Be sure to check the orientation of the plug before plugging it in.

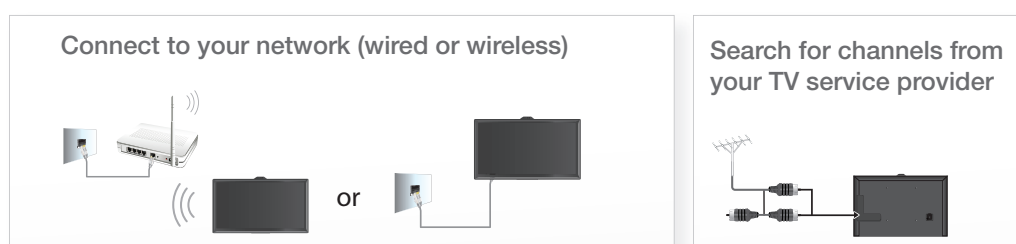
Step 4 Power on and start the initial setup

Information required:

- Wi-Fi network password (if you use one)
- Zip code
- Cable or satellite provider info

The TV must be connected to the Internet to use the Smart Features. If you have a wireless network, we recommend that you confirm that your network router is switched on and working before you start the initial setup. If you have a wired network, we recommend that you connect the TV to the network with a CAT 7 cable before you begin.

Power on to start the initial setup.



After you have finished the initial setup, you can configure the universal remote control settings. These settings let the Smart Touch remote control external devices connected to the TV, such as a set-top box or Blu-ray player.

Congratulations on your new Smart TV!

Troubleshooting

The stand is wobbly or crooked

Make sure the arrows on the stand are properly aligned.

The TV won't turn on

Make sure all cables are fully inserted, and that the remote has batteries installed.

My remote, gesture, or voice controls don't work

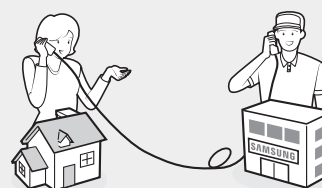
The TV ships with protective stickers covering some of the sensors. Make sure all of them have been removed.

I don't know where to plug in <device>

Devices without HDMI may require the included A/V adapter.

I have extra parts

The TV includes some optional parts to help with wall mounting and cable routing.



If you experience issues, please do not take the TV back to the store.

In the United States of America, call us at 1-800-SAMSUNG (1-800-726-7864) or visit us at www.samsung.com/spn for support and warranty service.

For other countries, refer to "Contact SAMSUNG WORLDWIDE" in the user guide.