

SAMSUNG

SERIES 5
5500

QUICK START GUIDE



BN68-05028A-02

Welcome to your new Smart TV!

The following instructions cover assembling, connecting, and setting up your new TV. Make sure you have the accessories listed below.

Included in this box

Remote Control

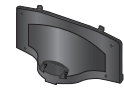


Remote Control



Batteries (AAA x 2)

Stand Parts and Cables



Stand Mount



IR extender



Cable manager



Power cord



Wall mount adapter
(46 inch and above models)

Attach the TV to the Stand

Step 1

Connect video devices

Step 2

Insert the batteries into the remote control

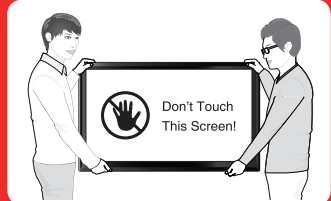
Step 3

Power on and start the initial setup

Step 4

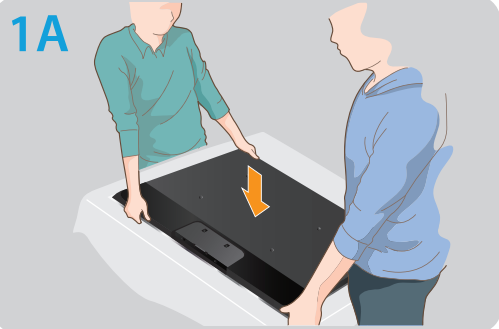


Warning: Screens can be damaged from direct pressure when handled incorrectly. We recommend lifting the TV by the edges, as shown.

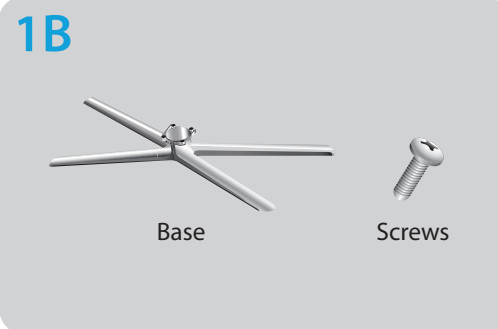


Also included: User Manual, Regulatory Guide

Step 1 Attach the TV to the Stand



Lay the TV on a soft surface, screen side down. Use the packing material to protect the screen.



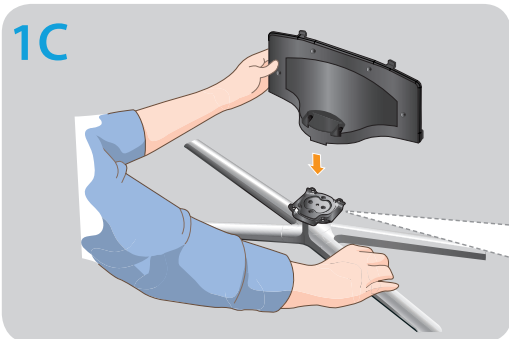
Find the stand base and screws in the box and set aside.

Screws

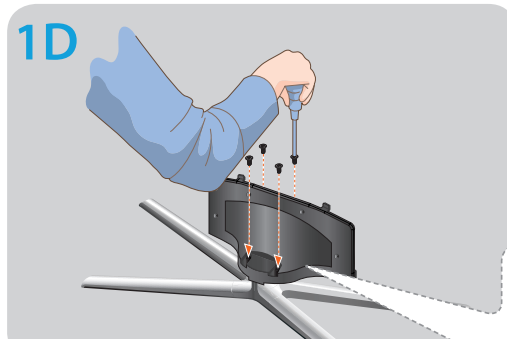
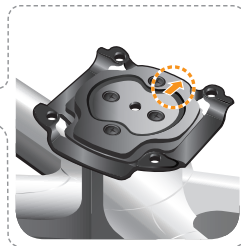
32 inch models: 7 pieces

39 inch and above models: 8 pieces

REQUIRED TOOLS: a Phillips head screwdriver and a soft, flat surface larger than the TV (such as the box).

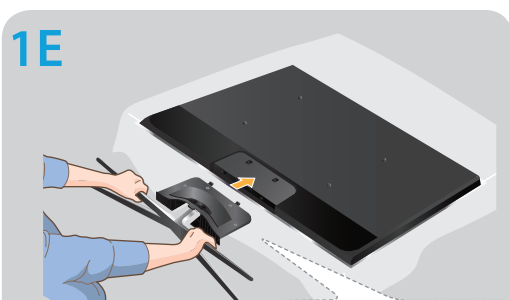
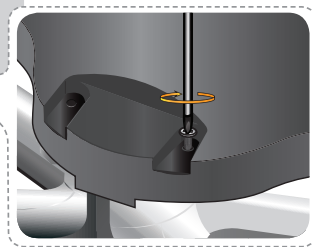


Fit the stand and mount together, making sure the notch on the mount aligns with the stand.

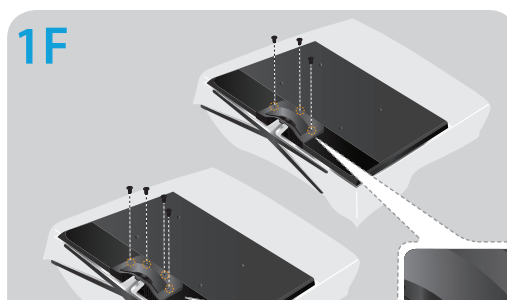
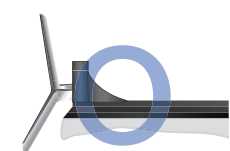


Insert 4 screws and secure the stand to the mount.

x4 (M4 X L12)



Holding the stand parallel to the screen, slide the stand into the notches on the back of the TV.

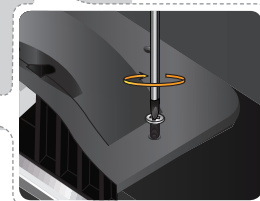


Insert screws and secure the stand to the TV.

32 inch models: x3 (M4 X L12)

39 inches and above models:

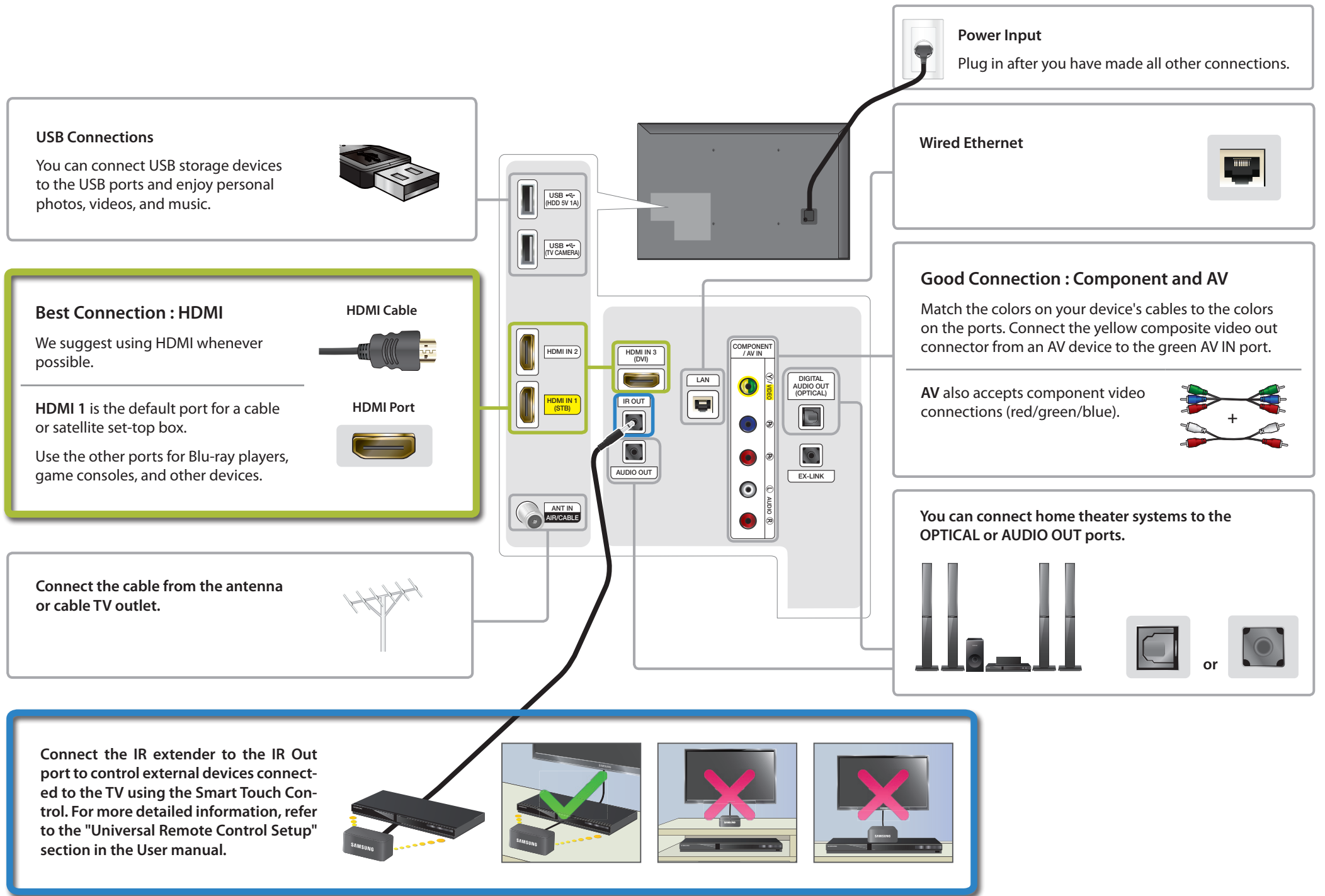
x4 (M4 X L12)



Step 2 Connect video devices

We suggest using HDMI connections whenever possible for the best picture quality.

- Please check the shape of the plugs to avoid inserting them upside down.
- The appearance of your TV may differ from the images below, depending on the model.



Step 3 Insert the batteries into the remote control



Step 4 Power on and start the initial setup

Information required:

- Wi-Fi network password (if you use one)
- Zip code
- Cable or satellite provider info

Plug in the TV. Press the power button on the remote to turn on the TV and start the initial set-up.

- The TV must be connected to the Internet to use the Smart Features. If you have a wireless network, confirm that your network router is working before you start the initial setup. If you have a wired network, connect the TV to the network with a CAT 7 cable before you begin.

Troubleshooting

The stand is wobbly or crooked

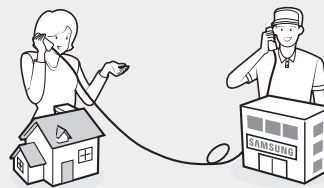
Make sure the arrows on the stand are properly aligned.

The TV won't turn on

Make sure all cables are fully inserted, and that the remote has batteries installed.

I have extra parts

The TV includes some optional parts to help with wall mounting and cable routing.



If you experience issues, please do not take the TV back to the store.

In the United States of America, call us at 1-800-SAMSUNG (1-800-726-7864) or visit us at www.samsung.com or www.samsung.com/spsn for support and warranty service.

For other countries, refer to "Contact SAMSUNG WORLDWIDE" in the user guide.

Congratulations on your new Smart TV!