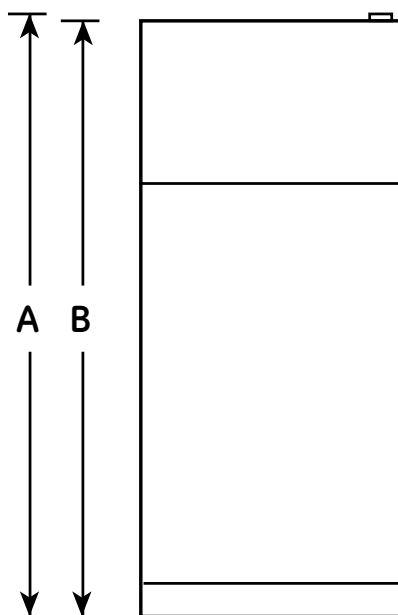


HOTPOINT®

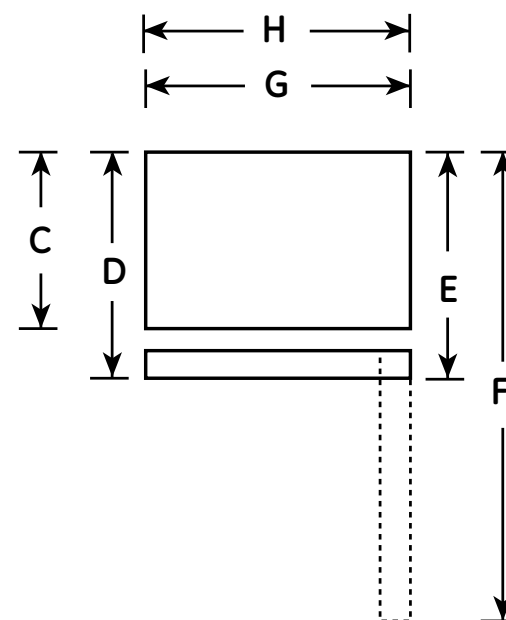
HTR16BBE – Hotpoint® 15.6 Cu. Ft. Top-Freezer Refrigerator

Overall Dimensions	Height to top of hinge (in.) A	61-3/4
	Height to top of case (in.) B	61-1/4
	Case depth without door (in.) C	25-7/8
	Case depth less door handle (in.) D	29-1/8
	Case depth with door handle (in.) E	29-1/8
	Depth with fresh food door open 90° (in.) F	54-7/8
	Width (in.) G	28
	Width with door open 90° inc. door handle (in.) H	30-1/2
Air Clearances	Each side (in.)	3/4
	Top (in.)	1
	Back (in.)	2

Front View

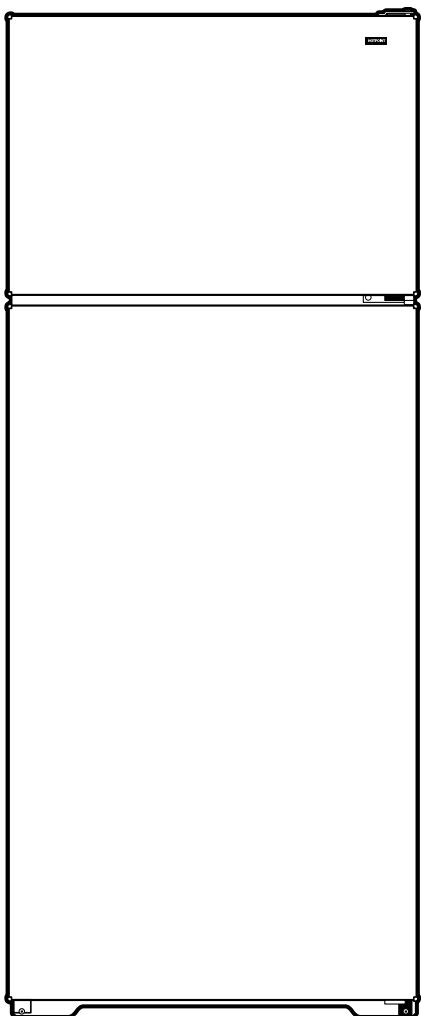


Top View





HTR16BBE – Hotpoint® 15.6 Cu. Ft. Top-Freezer Refrigerator



Features and Benefits

- Upfront temperature controls - Easy-to-use controls regulate both fresh food and freezer sections
- Recessed handles - Flush with the surface and ideal for tight spaces
- Adjustable wire shelves - Moveable racks can handle a variety of foods
- Fixed gallon door shelves - Provides the ideal space for storing gallon containers in the door
- Clear crisper drawers - Transparent drawers make finding your favorite items quick and easy
- Equipped for optional icemaker - Easily accommodates the installation of an icemaker
- Never Clean condenser - Sealed compartment keeps coils clean and simplifies maintenance
- Model HTR16BBELWW – White
- Model HTR16BBERWW – White
- Model HTR16BBERBB - Black
- Model HTR16BBELCC – Bisque
- Model HTR16BBERCC – Bisque