

C39

35.5" x 39.38" x 23.63" (H x W x D)

DISCONTINUED: Replaced by C39GLASS

Highlights:

Two easy-to-clean cast iron burners with 110V operation

Includes our CM405 refrigerator-freezer

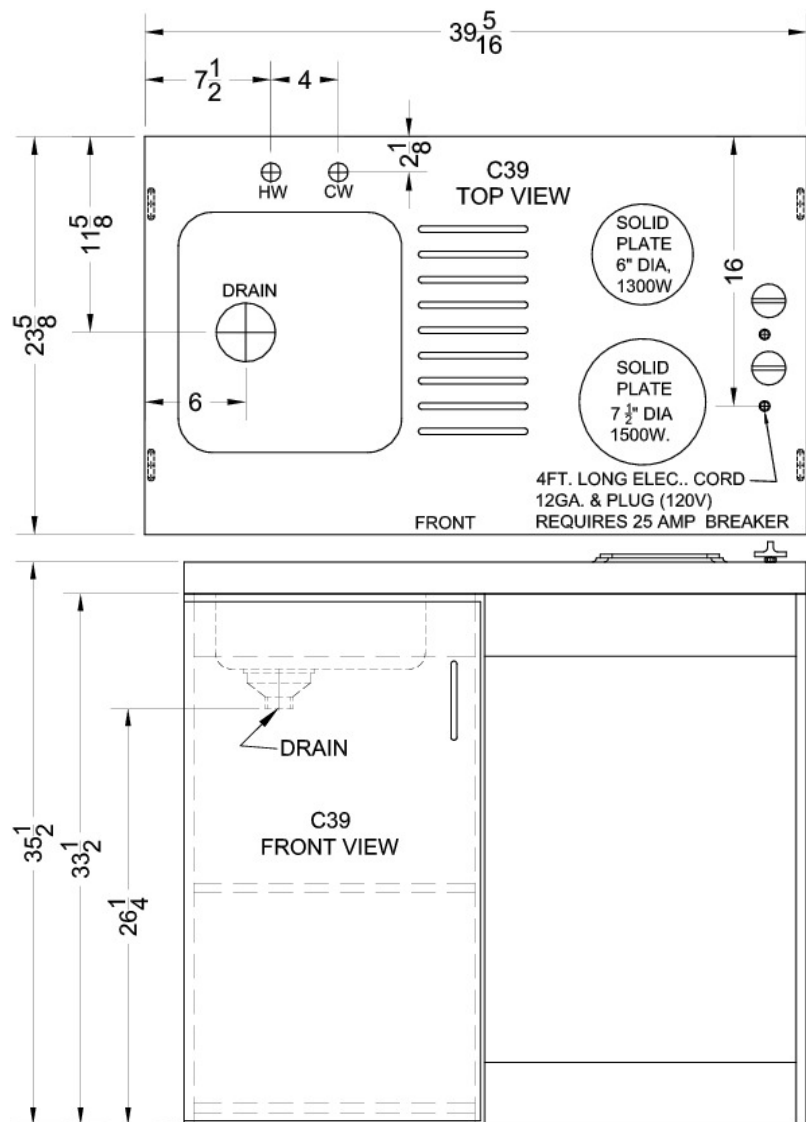
Perfect in small quarters or as a temporary kitchen



Two electric burners	Solid cast iron construction lets you boil and fry with no mess on no-spill surfaces
One piece stainless steel countertop	Easy to clean and built to last
Sink and faucet	Stainless steel sink comes ready to wash
110V Operation	Just plug in and cook
Storage compartment	Convenient cabinet with center shelf lets you store dry goods behind a door
Refrigerator-freezer included	Includes our manual defrost CM405 refrigerator-freezer, with adjustable shelves
Ships fully assembled	Base model comes in one box. Just slide the refrigerator-freezer into its opening and plug in
100% CFC free	Environmentally friendly design without ozone-damaging chemicals

Specifications:

Height	35.5"
Width	39.38"
Depth	23.63"
Capacity	4.1 cu.ft.
Shipping Weight	200.0 lbs.
Weight	102.0 lbs.
US Electrical Safety	UL
Voltage/Frequency	115 V AC/60 Hz
Amps	25.0
Reversible	Yes
Door Swing	RHD
Crisper Quantity	1
Shelf Quantity	2
Adjustable Shelf	true
Shelf Type	Wire
Crisper Cover Type	Glass
Crisper Finish	Transparent
Defrost Type	Manual
Burner Temperature Control	Dial
Number of Burners	2
Heating Type	Radiant
Thermostat Type	Dial
Condensor Location	Rear of Unit
Freon Type	R134a
Parts/Labor Warranty	1 Year



Summit Appliance Division, Felix Storch, Inc.
 770 Garrison Ave • Bronx, NY 10474
 Phone: 718-893-3900 • Fax: 718-842-3093
 Email: info@summitappliance.com