

Frigidaire

Factory Parts Catalog

Product No.	FPHS2399KF1
Series	Professional
Color	stainless
Volts	115
Wiring Diagram	241912901
Owner's Guide	241979200
Market	North America
Energy Guide	241935569
Service Data Sheet	240389638

 **Electrolux**

Electrolux Major Appliances
North & Latin America
P.O. BOX 212378
AUGUSTA, GA 30917

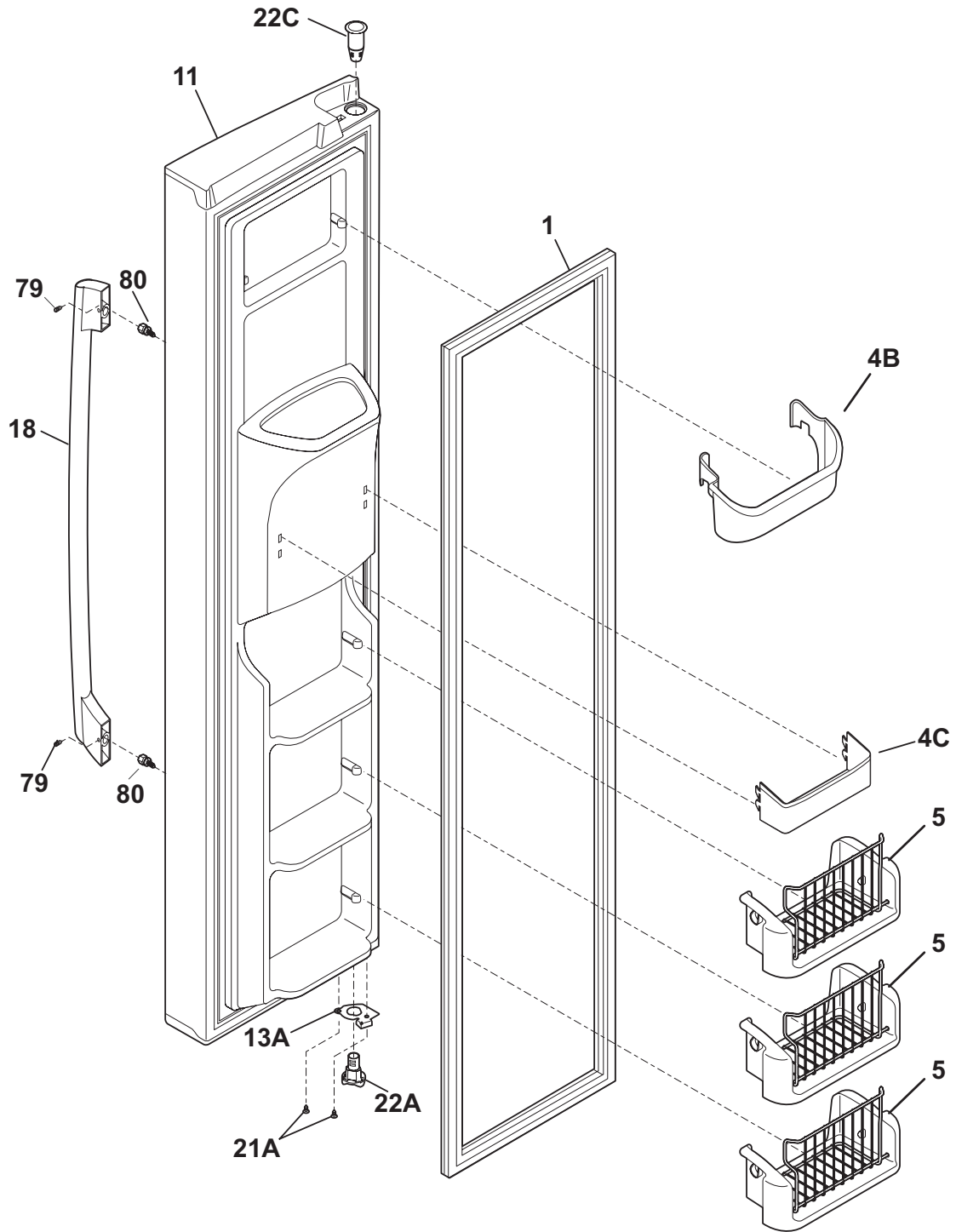
Publication No.
5995538484
09/04/20
(EN/SERVICE/DCS)
137

**SIDE-BY-SIDE
REFRIGERATOR**

Model No.
FGHS2399K

Copyright © 2009 Electrolux Home Products, Inc.
All rights reserved.

FREEZER DOOR

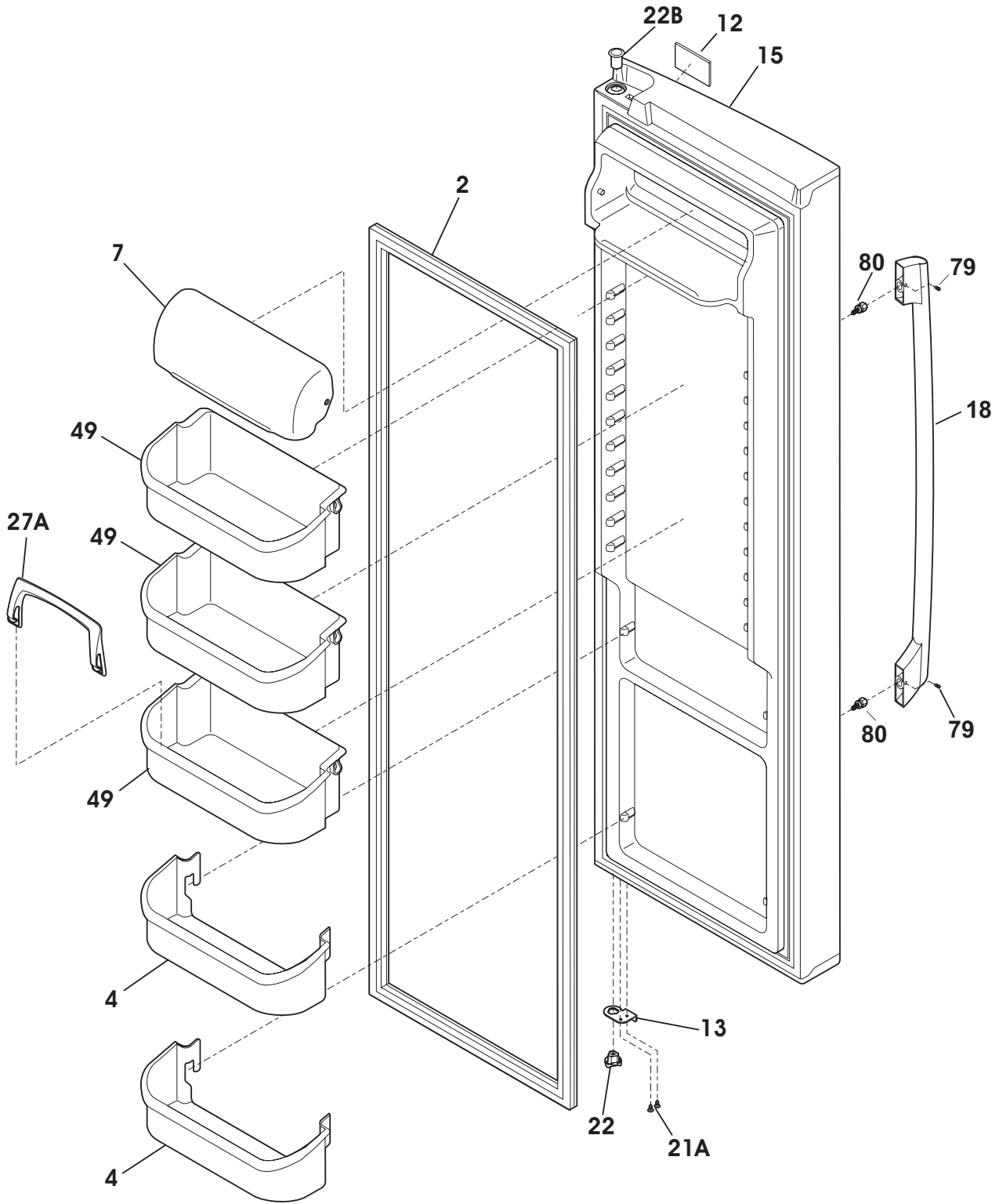


F58FSDEEB1

FREEZER DOOR

POS. NO	PART NO.	DESCRIPTION
1	241786004	Gasket-frzr door, white, magnetic
4B	240367302	Bin-door, frzr-upper
4C	240358402	Bin-door, frzr-dispenser
5	241545004	Bin-tilt out, tilt-out
11	241993811	Door-frzr, stainless, complete assy
13A	241942604	Door Stop, black, frzr
18	241972501	Handle-door, stainless
21A	240442706	Screw-#10-32 X 3/4, zinc
22A	241990302	Bearing-hinge(frz), closer
22C	241760401	Bearing, hinge, top
79	218755401	Screw-set, 10-32 x 0.375
80	218755504	Screw-shoulder, #10 AB, handle mounting
*	240352102	Connector-water, straight
*	240451503	Screw, ind hex wshr hd, 8-32 x 0.375, trilobe
*	5303918371	Dispenser heater kit, 115
* #	241834703	Harness-wiring, door

REFRIGERATOR DOOR

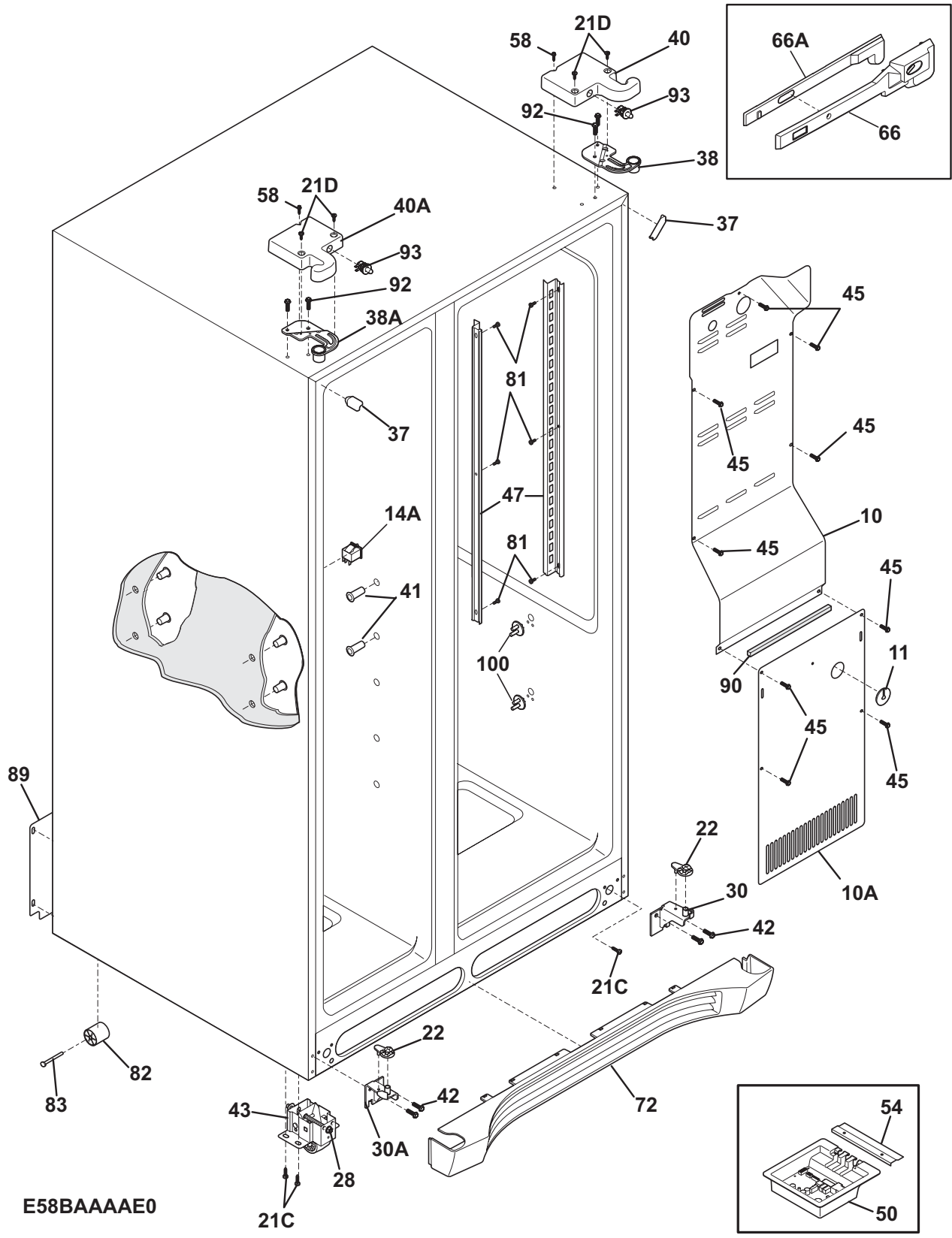


F58RSDAAA0

REFRIGERATOR DOOR

POS. NO	PART NO.	DESCRIPTION
2	241786003	Gasket-refr door, white, magnetic
4	240363702	Bin-door, 2-liter
7	240338303	Door, dairy, clear
12	242015101	Label-nameplate
13	241942603	Door Stop, black, ref
15	241837275	Door-refr, stainless, complete assy
18	241972501	Handle-door, stainless
21A	240442706	Screw-#10-32 X 3/4, zinc
22	241990301	Bearing-hinge, gray
22B	241760403	Bearing, hinge, top
27A	241812702	Retainer, tall bottle
49	241808226	Bin-door, gallon, w/trim
49*	241780303	Liner, bin, bin
79	218755401	Screw-set, 10-32 x 0.375
80	218755504	Screw-shoulder, #10 AB, handle mounting

CABINET

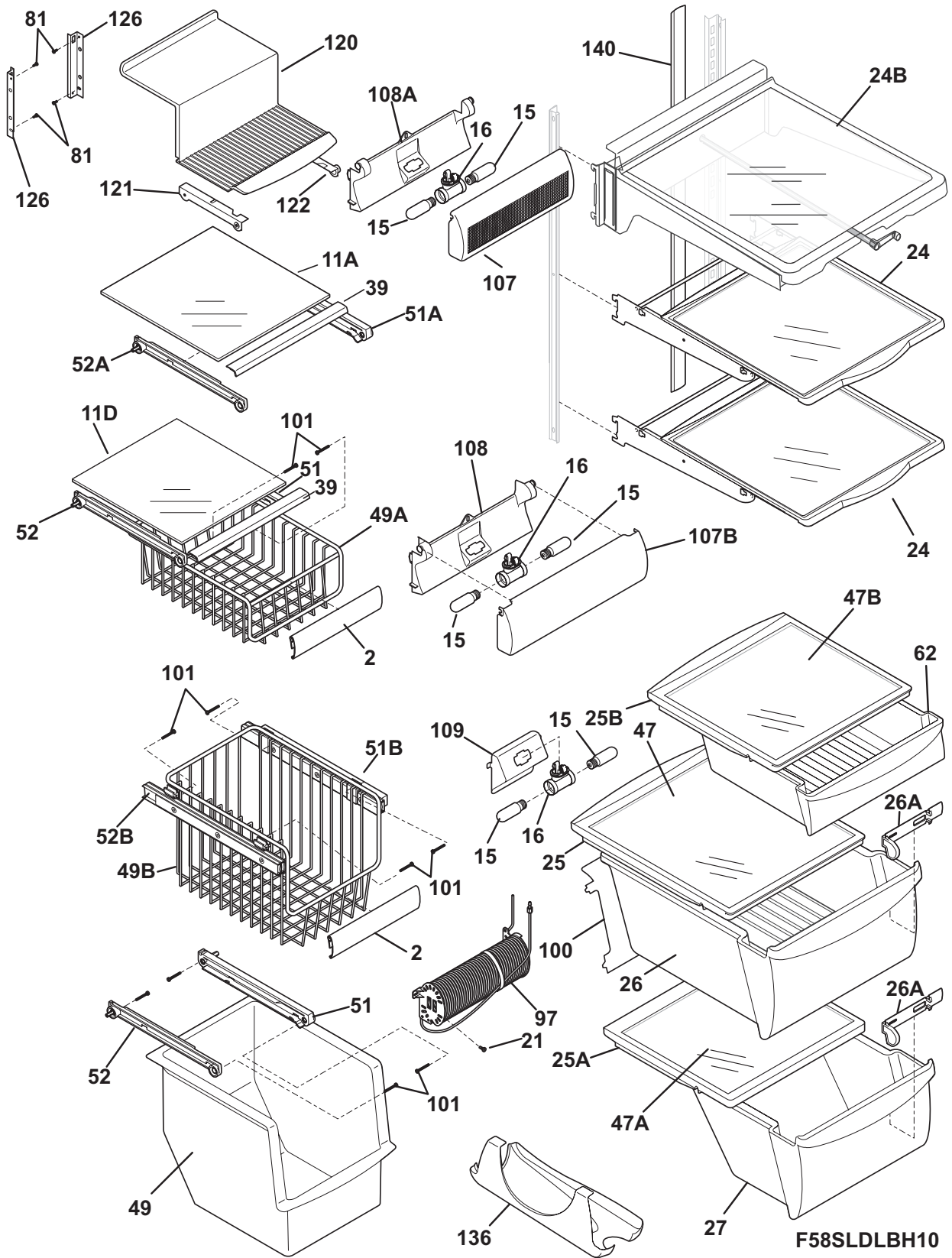


E58BAAAAE0

CABINET

POS. NO	PART NO.	DESCRIPTION
10	240435913	Cover-air duct
10A	241719710	Cover-evap coil, lower
11	5303208309	Plug-hole, factory test
14A#	241547901	Switch-light/lamp, frizr door
21C	218252201	Screw, #8 truss hd, 10-32CA x 0.500
21D	241548003	Screw, 10-32 x 3/8
22	241917801	Plate-door closer
22*	218755402	Screw-set, 10-32 x 0.375
28	240335502	Bolt-roller adj, hex washer head, 1/4-20 x 4.020, (2), special
30	241917901	Bracket-lower hinge, RH, w/hinge pin
30A	241917902	Bracket-lower hinge, LH, w/hinge pin
37	240337612	Trim-cabinet corner, nickeloid, (2)
38	241761301	Bracket-upper hinge, RH
38A	241761302	Bracket-upper hinge, LH
40	241946707	Cover-upper hinge, RH
40*	241835801	Harness-wiring
40A	241946708	Cover-upper hinge, LH
40A*	241891901	Harness-wiring, freezer
41	241550801	Grommet-shelf mtg, 1.40" long
41*	241550701	Grommet-shelf mtg, .96" long
42	240578902	Screw, hex head, 1/4-20 x 5/8
43	240335006	Roller Assy, front, (2)
45	241500303	Screw, hex washer head, 8-18AB x 0.500
47	241513001	Channel-shelf mtg, side, (2)
50	242000406	Board-main power
50*	241867901	Harness-wiring
54	241532401	Channel
58	218781101	Screw, pan head, 8-18 x 0.625
66	241756801	Damper-meat keeper
66*	241512807	Seal
66A	241756901	Housing-damper
72	241972905	Grille/Kickplate
81	5304455650	Screw, hex washer head, 8-15A x 0.625, low profile
82	5304418225	Roller, compressor base, rear, (2)
83	5304455655	Rivet, flat head, 1/4 OD x 1-3/4, roller pin
89	241733904	Cover-access, w/label
90	218249807	Seal-coil cover
92	241710601	Screw, hex washer hd, 1/4 x 7/8, hinge mtg
93	241911701	Switch, plunger style
100	240423701	Support, crisper cover, front, (4)
100*	240350802	Support, crisper cover, rear, (4)
*	240396801	Clamp, tube/wiring, nylon, black/natural
*	241781601	Seal-return air
*	241852501	Clip, wiring harness
*	241868101	Air Guide

SHELVES

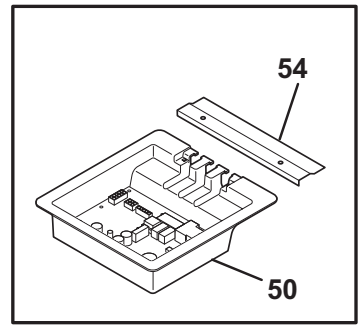
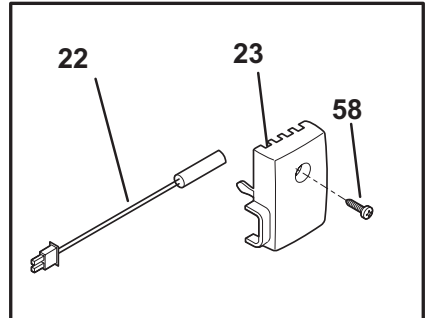
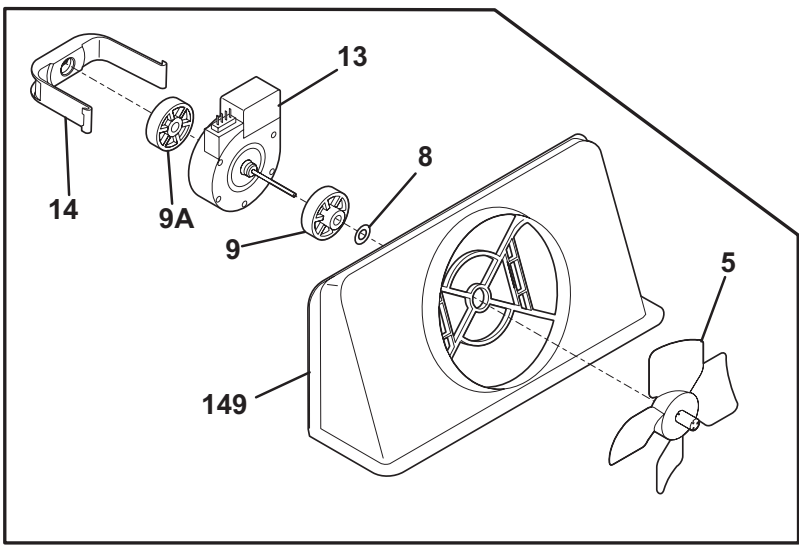
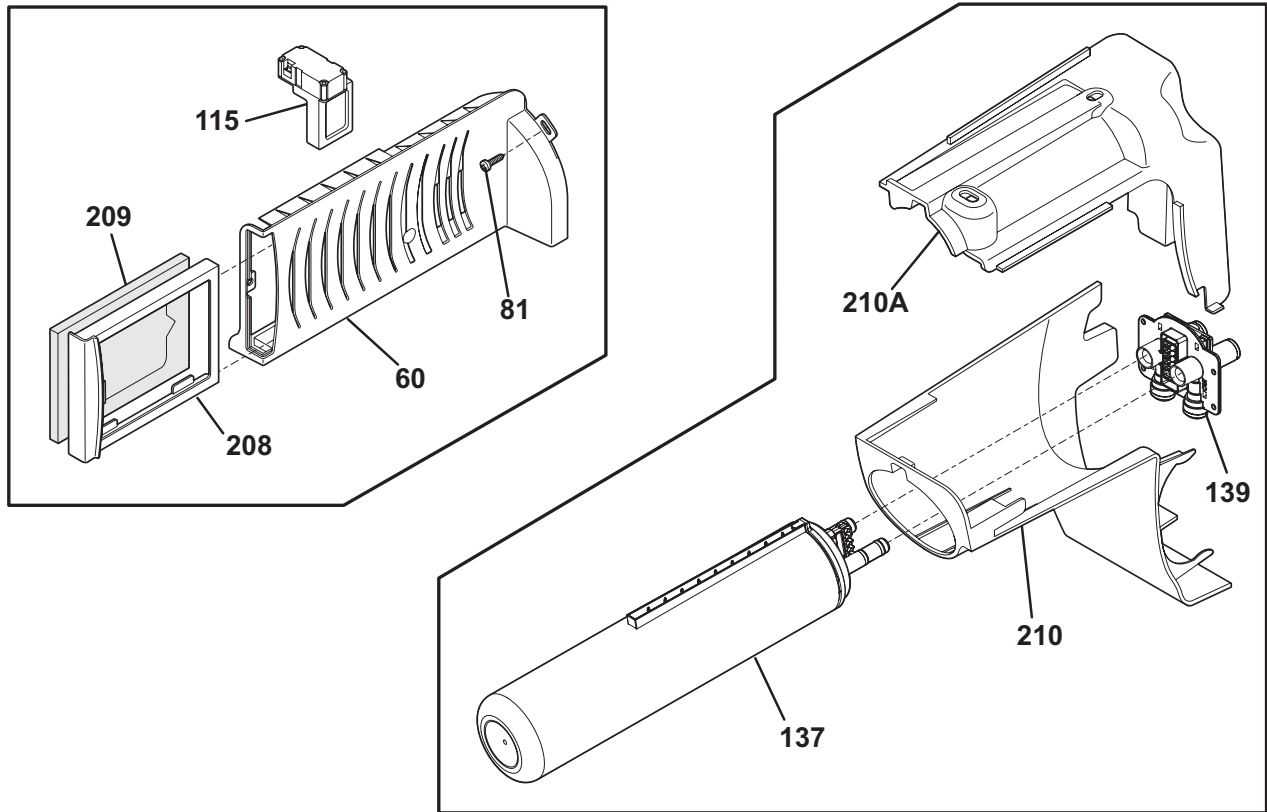


F58SLDLBH10

SHELVES

POS. NO	PART NO.	DESCRIPTION
2	241510609	Trim-basket
11A	241992913	Shelf-freezer, glass, upper
11D	241992914	Shelf-freezer, glass, lower
15	241552801	Light Bulb
16	241622802	Socket-light, frz light
16*#	241797601	Harness-wiring
21	5304455658	Screw, hx wshr hd sems, 8-15A x 0.625
24	240350142	Shelf-"Spill-Safe", cantilever, sliding
24B	240424617	Shelf-"Spill-Safe", "Aspect", complete
25	241974201	Cover-crisper pan, upper
25*	240362101	Clip-slide, cover-crisper
25A	241974301	Cover-crisper pan, lower
25B	241973101	Cover-meat pan
26	240354727	Pan-crisper, upper
26*	240349801	Clip-slide, pan-crisper
26A	240351101	Control-humidity
27	240354830	Pan-crisper, lower
39	240367606	Trim-shelf, front
47	241992910	Insert-pan cover, glass
47A	240350614	Insert-pan cover, glass
47B	241992909	Insert-pan cover, glass
49	240564301	Basket-sliding
49A	240530501	Basket-sliding, upper, half
49B	240530503	Basket-sliding, upper, full
51	240343002	Hanger-basket, RH
51A	240395502	Hanger-basket, RH
51B	240579801	Hanger-basket, RH
52	240343102	Hanger-basket, LH
52A	240395602	Hanger-basket, LH
52B	240579802	Hanger-basket, LH
62	241974403	Pan-meat
81	5304455650	Screw, hex washer head, 8-15A x 0.625, low profile
97	241532007	Water Tank
100	240326303	Cover-water tank
101	218493101	Screw, hex washer head, 8-18AB x 1-3/4
107	241753501	Shield-light, refr
107B	241947502	Shield-light, meat pan
108	241513301	Cover-wiring, meat pan light
108A	241753701	Housing-light, upper, fresh food
109	241513202	Base-crisper light socket
120	241740701	Shelf-ice cream
121	241561001	Rail-ice cream shelf, LH
122	241561101	Rail-ice cream shelf, RH
126	241674401	Channel, auger mtg, LH
126	241674402	Channel, auger mtg, RH
136	241657701	Dispenser-can, white
140	241812501	Channel, wtr tube cover
*	241781601	Seal-return air
*	241868101	Air Guide
*	241935559	Energy Guide

CONTROLS

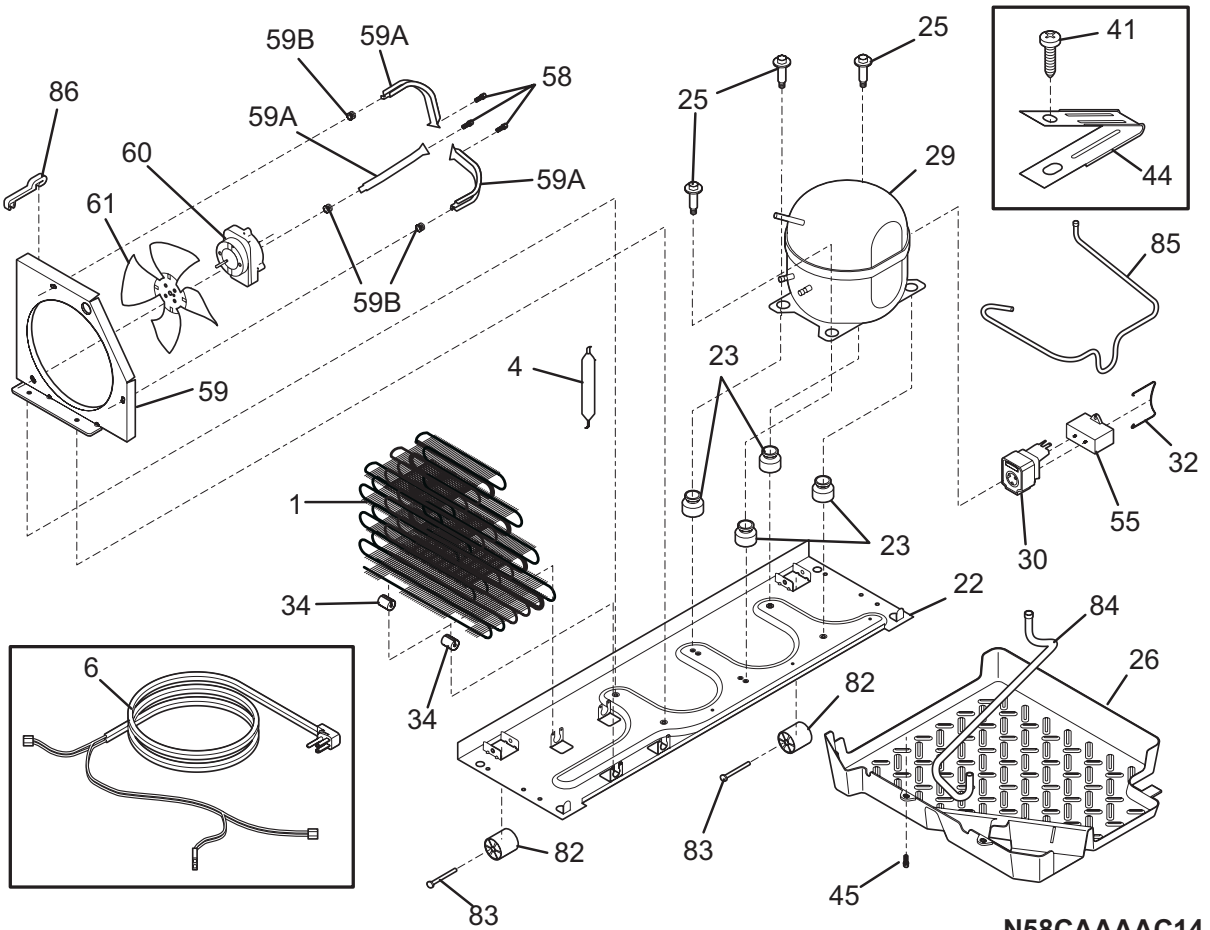
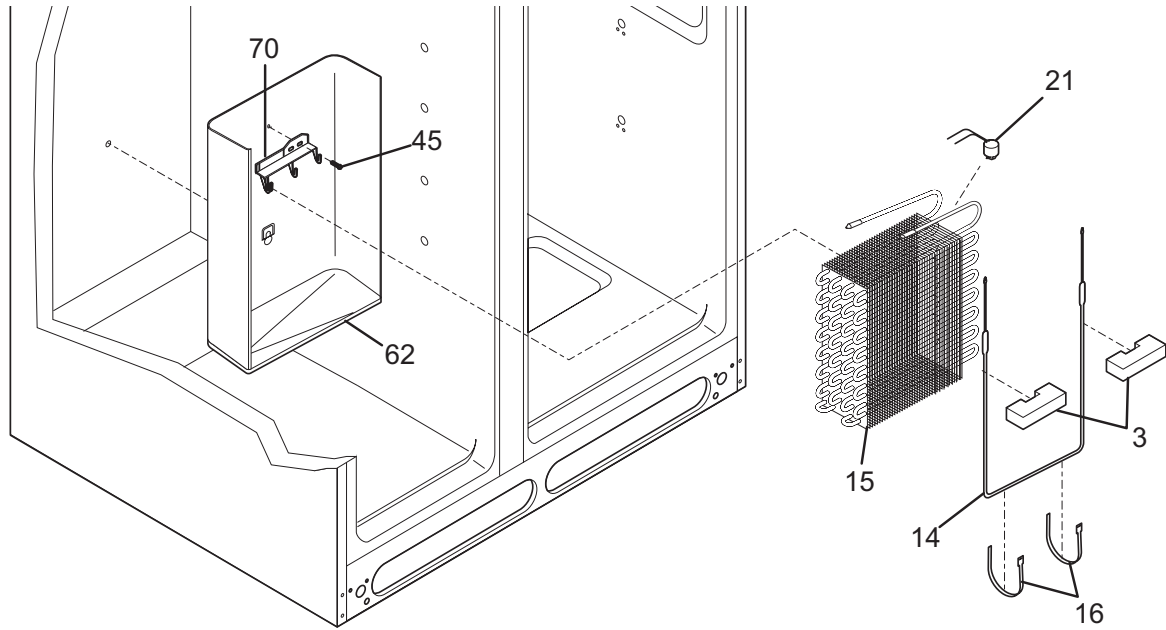


F58TEBCAE0

CONTROLS

POS. NO	PART NO.	DESCRIPTION
5 #	5308000010	Fan Blade, red, evaporator fan
8	215474201	Washer, "slinger", nylon, evap fan shaft
9	241563601	Bushing-motor mtg
9A	241845301	Bushing-motor mtg
13	241509402	Motor, evaporator fan
14	241517701	Clip, evap fan motor
22	240597203	Sensor
23	241845401	Housing-sensor
50	242000406	Board-main power
50*	241867901	Harness-wiring
54	241532401	Channel
58	5304455650	Screw, hex washer head, 8-15A x 0.625, low profile
60	242010601	Housing-diffuser & air filter
60*	241945101	Insulation-air duct
81	5304455658	Screw, hx wshr hd sems, 8-15A x 0.625
115	241853801	Damper Assy, w/seal
137	241791601	Filter-water, carbon
139	242009601	Base-water filter
149	241563401	Shroud-fan orifice
149*	241528305	Seal, shroud
208	241754301	Sleeve, air filter, front
209	241754002	Filter-air
210	241983801	Housing-water filtr
210A	241998301	Mount-water filter
*	3205266	Edge Protector, wiring harness
*	241852501	Clip, wiring harness

SYSTEM

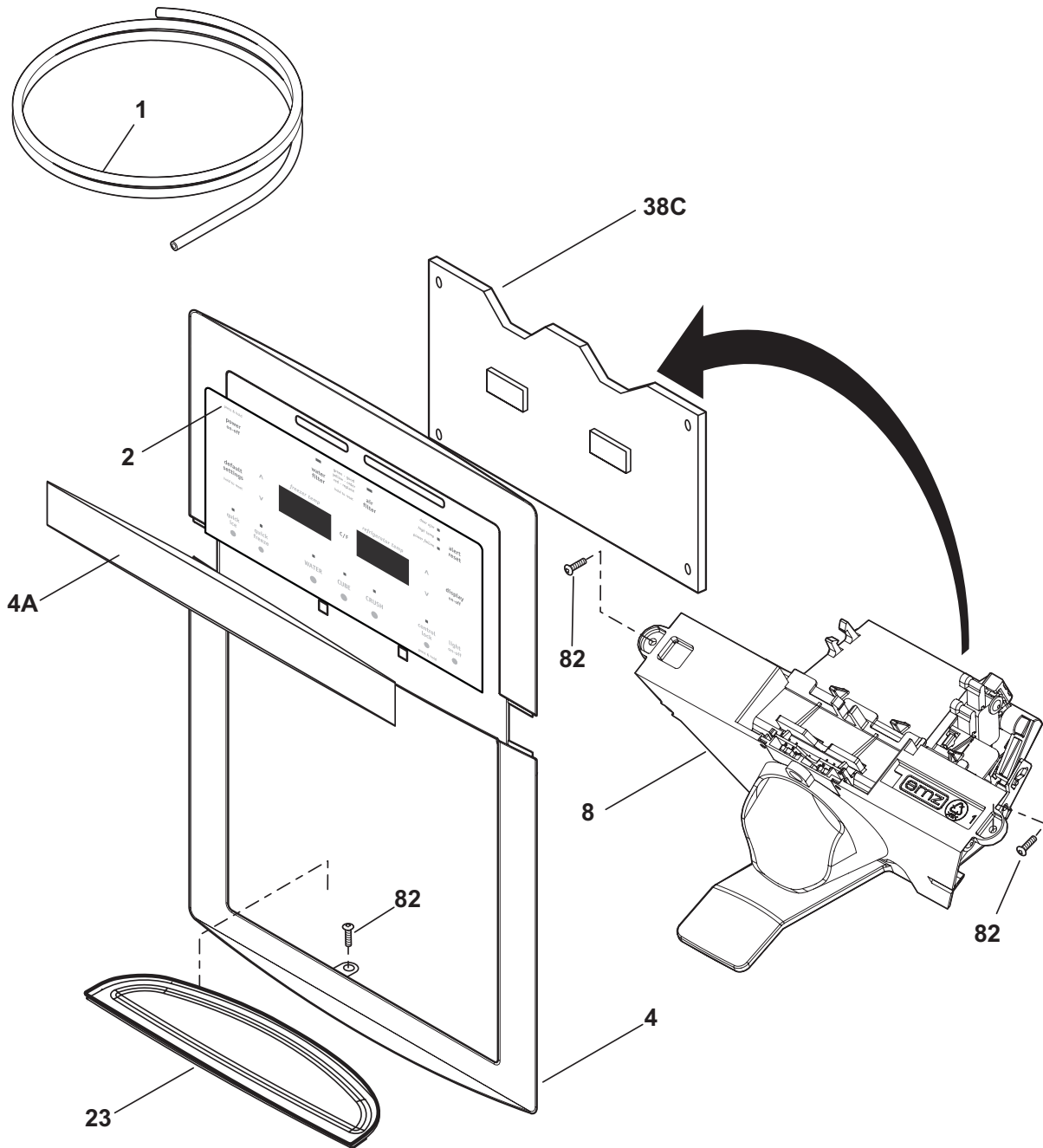


N58CAAAC14

SYSTEM

POS. NO	PART NO.	DESCRIPTION
1	240333602	Condenser
3	218679606	Block-evap coil, styrofoam, (2)
4 #	218944001	Drier-filter, R134a System
6 #	241516901	Cord-service
6* #	241519902	Harness-wiring
6* #	241834802	Harness-wiring, machine compt
14 #	240316107	Heater-defrost
15 #	5303918286	Evaporator Kit
16	5308000110	Strap-evap/heater, aluminum, (2)
21	5303918214	Thermostat-defrost, kit
22	240330010	Base-compressor
22*	218252201	Screw, #8 truss hd, 10-32CA x 0.500
23	241659701	Grommet, compressor
25	240491503	Screw-compressor mtg, 1/4-28 x 1.16, (4)
26	241697602	Pan-defrost
29 #	5303918359	Compressor, w/o electricals
29*	240433204	Screw, hex washer head, 8-18 x 5/16
30 #	241707712	Starter, PTC
32	241650901	Clamp, elec cont mtg, compressor
34	240405201	Grommet, rubber, black, cond tube/wire
41	240555002	Screw-#8-32 X 3/8
44	215174700	Clamp-service cord, strain relief, galv steel
45	5304455650	Screw, hex washer head, 8-15A x 0.625, low profile
55	218909913	Capacitor, run, 220 VAC, 15 microfarad
58	240569201	Screw, 8-18 x 0.500
59	240315506	Shroud, cond fan motor
59*	240346701	Tape-foam seal, shroud
59*	240359403	Screw-fan shroud, (2)
59A	240346501	Bracket-support, cond mtr, (3)
59B	240346601	Grommet-bracket, (3)
60	241584301	Motor-condenser fan
61	241639501	Blade-condenser fan
62	240429401	Trough-drain
70	218990801	Bracket-evap/cvr mtg
82	5304418225	Roller, compressor base, rear, (2)
83	5304455655	Rivet, flat head, 1/4 OD x 1-3/4, roller pin
84	241957901	Tube-drain, lower
85	241844801	Tube-connector, suction
86	240409302	Spacer-cond tube, black
*	241852501	Clip, wiring harness
*	5303918222	Hot Tube Repair Kit, service
* #	5303918328	Heat Exchanger Kit, suction line, service

ICE & WATER DISPENSER

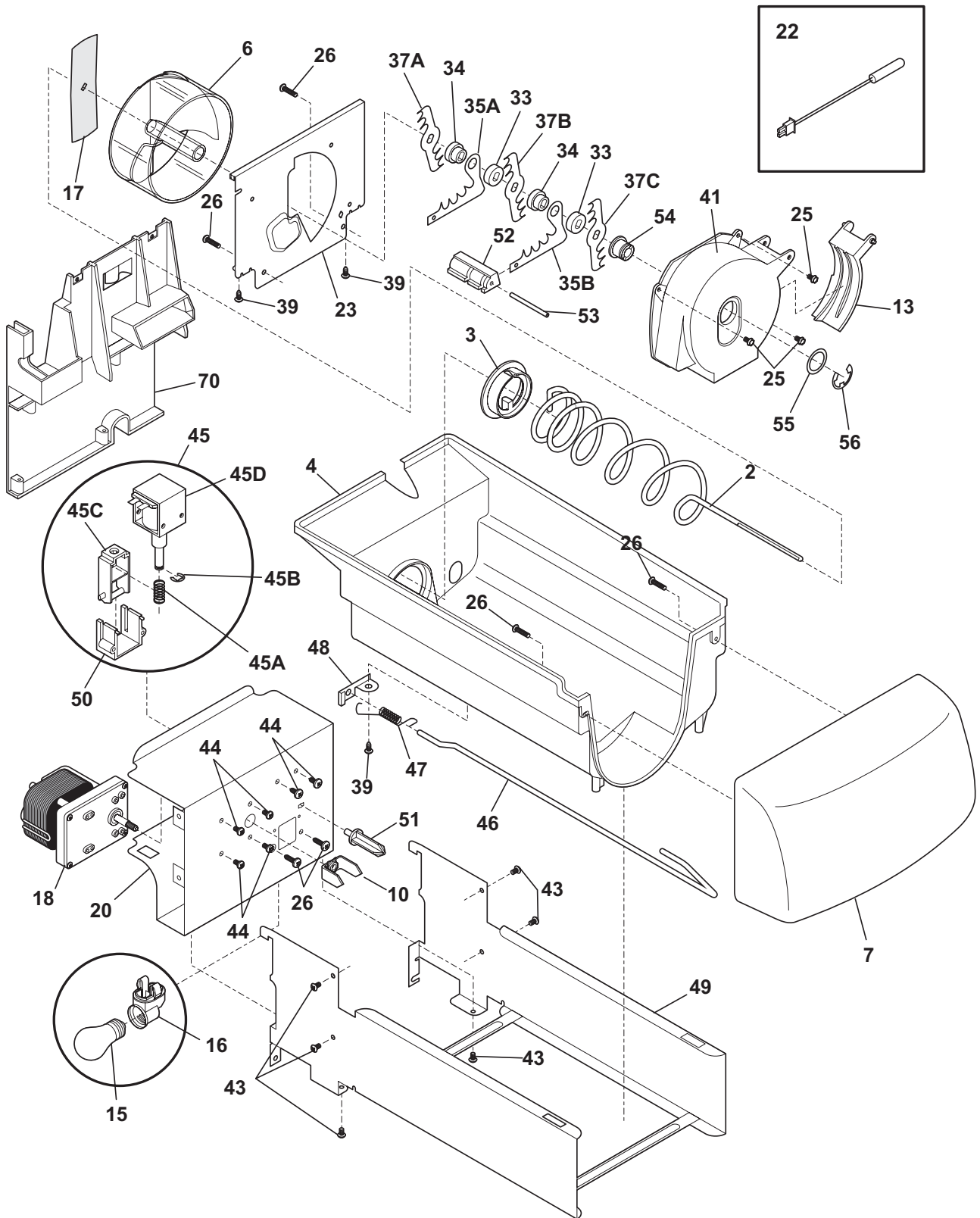


F58XFAAAA0

ICE & WATER DISPENSER

POS. NO	PART NO.	DESCRIPTION
1	218976419	Tube-water inlet, valve to door
1*	218976429	Tube-water inlet, 97.50", brown/tan
1*	218976915	Tube-water inlet, inlet valve, to filter
1*	240561703	Seal-water inlet, inlet valve, to ice maker
2	241973816	Switch Assembly, overlay
4	241946804	Cover-module
4A	241946901	Trim, Facade
8	241753413	Module-dispenser, clear
23	241947006	Drip Tray
38C#	241973703	Board-control
82	240363402	Screw-#8-18 X 1/2, #6 hd plask
*	5303918371	Dispenser heater kit, 115

ICE CONTAINER

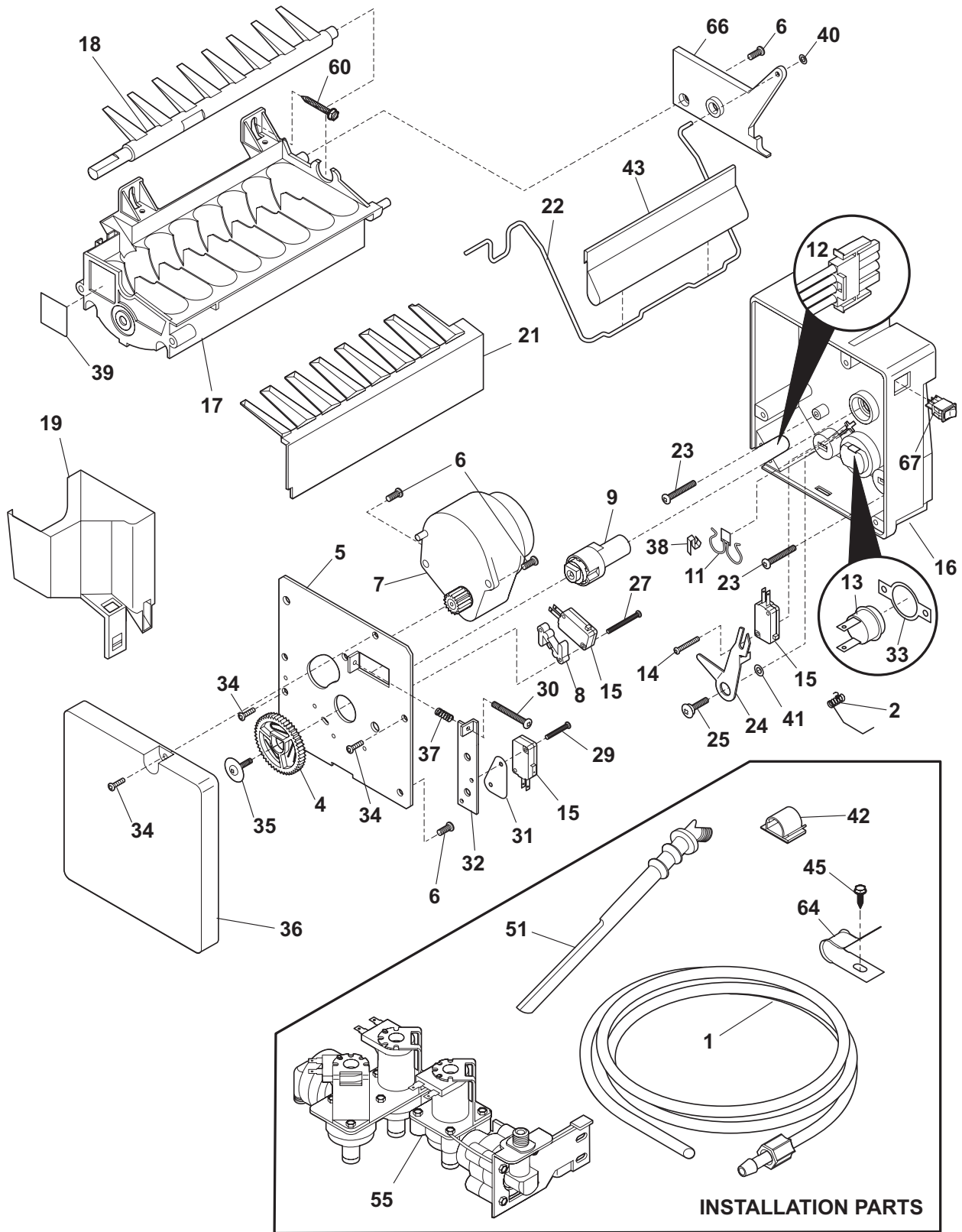


N58YDAAAC4

ICE CONTAINER

POS. NO	PART NO.	DESCRIPTION
2	241716101	Auger-ice
3	241685201	Cam-drive
4	241561302	Container-ice, bucket only
6	241685101	Drum-ice disp
7	241561402	Front-ice container
10	241726501	Bar-drive
13	241685301	Gate
15	241555401	Light Bulb
16	241559801	Socket-light
17	241684501	Drive Blade
18 #	241676201	Motor-auger
18*	241522901	Harness-wiring, icmkr/container
20	241734702	Cover-motor
22	240597203	Sensor
22*	241519401	Clip, sensor
23	241684001	Plate-front
25	241690701	Screw, hex washer head, 8-32T x 0.375
26	215503203	Screw, cr pan hd, 10-16 x 0.500
33	241684801	Spacer
34	241689801	Spacer
35A	241684301	Fixed Blade, round
35B	241684201	Fixed Blade, square
37A	241684101	Blade, crusher #1
37B	241684102	Blade, crusher #2
37C	241684103	Blade, crusher #3
39	241690501	Screw
41	241685601	Housing-crusher
43	218359202	Screw, pan head, 8-32 x 0.250
44	241842101	Screw, 8-32 x 1/4
45	241675701	Solenoid Assy, 115V
45A	241675901	Spring-solenoid
45B	241676001	E-Ring-solenoid
45C	241676101	Actuator-solenoid
45D	241675801	Solenoid, 115V
46	241716002	Control Rod
47	241731801	Spring-control rod
48	241684602	Bracket-control rod
49	241734401	Rail Assy
50	241675601	Guide-solenoid
51	241676301	Rotation Stop
52	241684901	Spacer-fixed blades
53	241690402	Pin-spiral, fixed blades
54	241685001	Nut-auger
55	241690306	Washer
56	241690201	E-ring
70	241561501	Plate-mounting
70*	215005101	Screw, hanger/rtr mtg, 8-10 x 7/16
70*	241551602	Screw, hex head, 8-18B x 0.875
70*	241716801	Clip
*	218817300	Shield-light
*	241860810	Ice Container Assy, w/moving parts

ICE MAKER

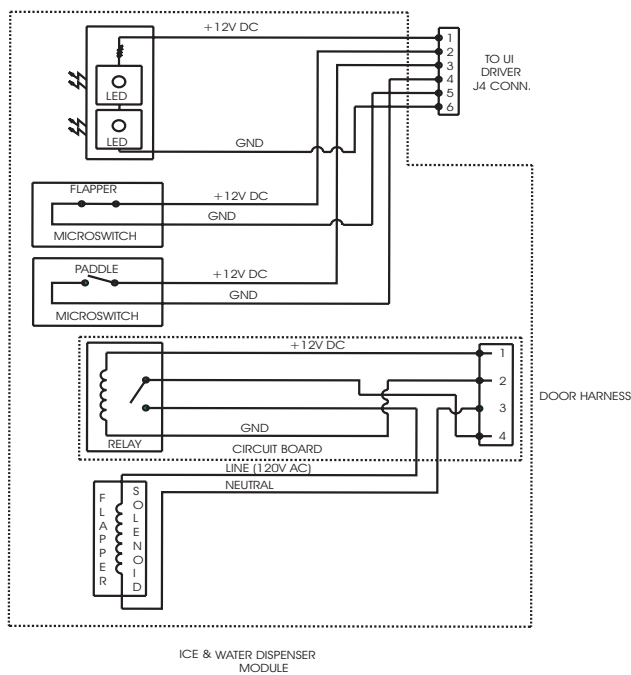
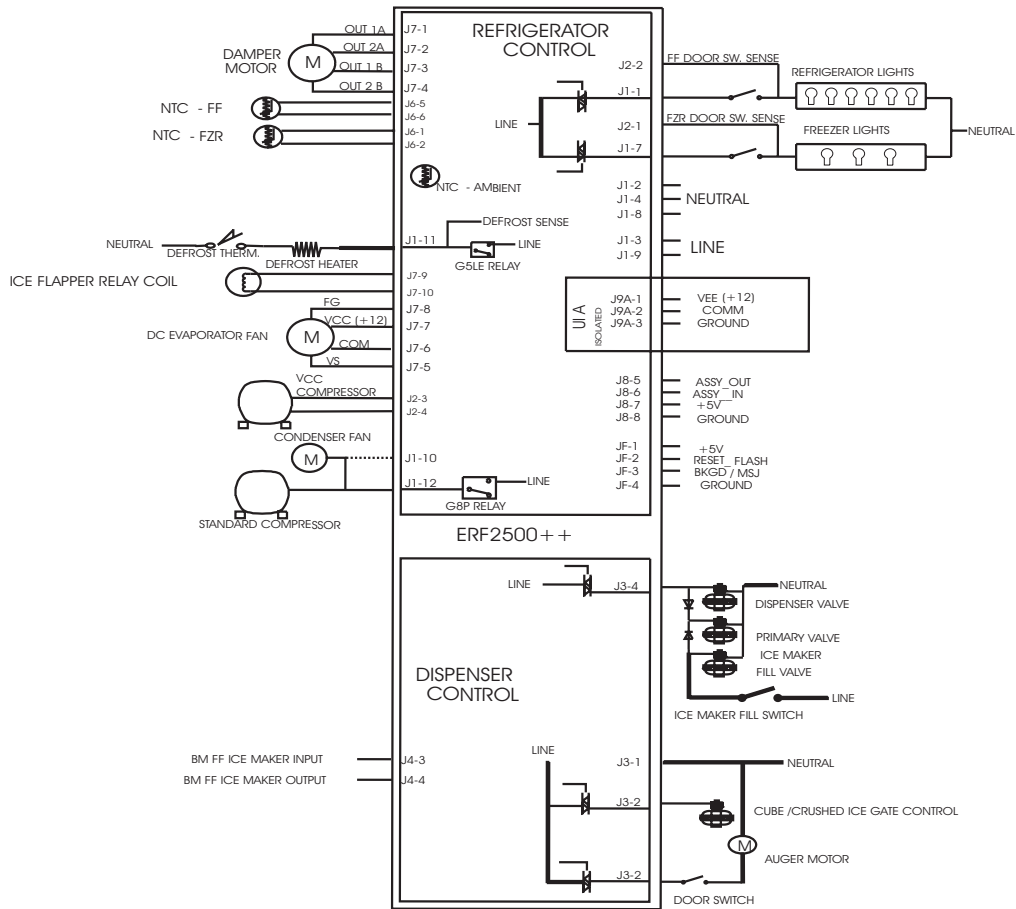


N581115TServo

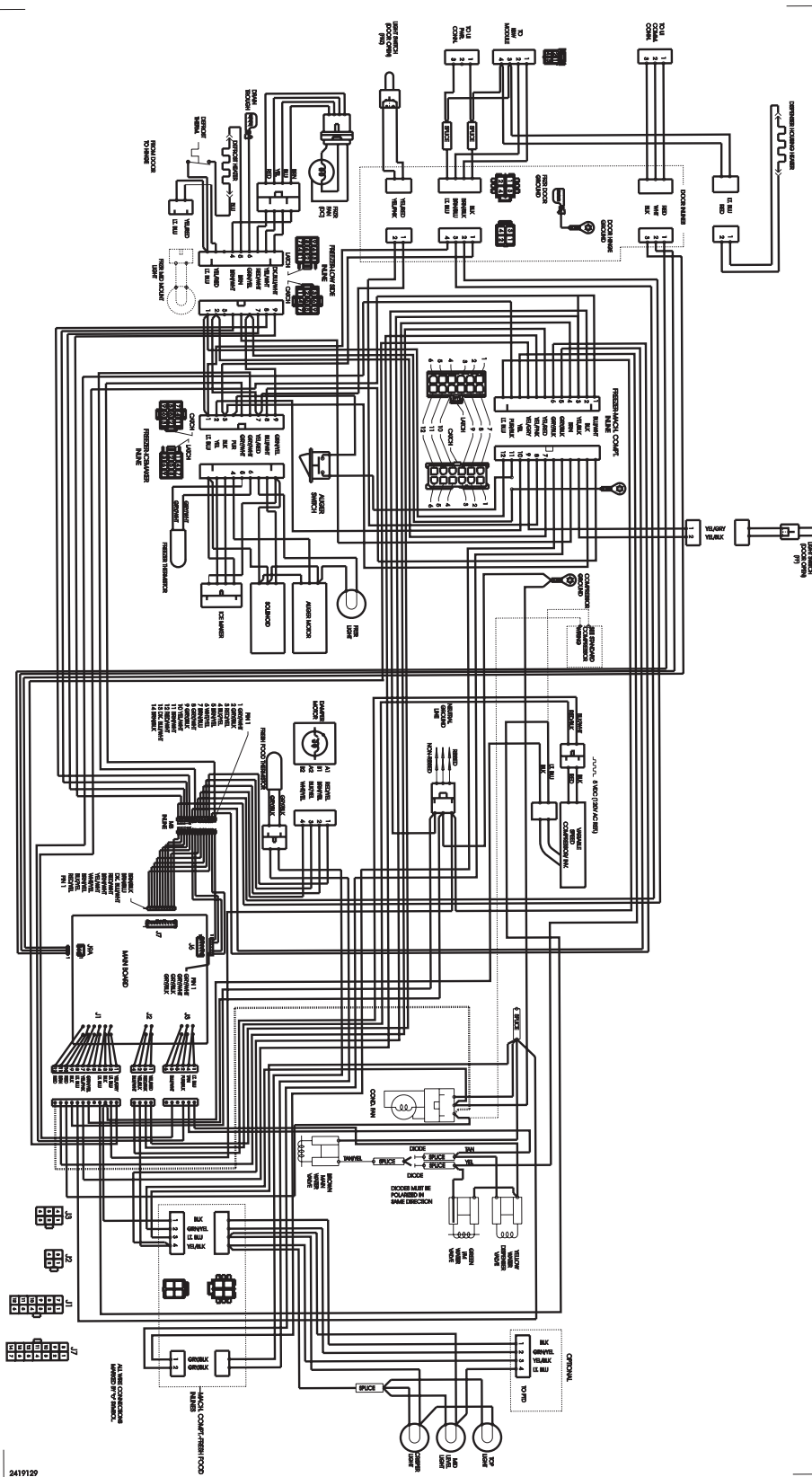
ICE MAKER

POS. NO	PART NO.	DESCRIPTION
1	218976419	Tube-water inlet, valve to door
1*	218976429	Tube-water inlet, 97.50", brown/tan
1*	218976915	Tube-water inlet, inlet valve, to filter
1*	240561703	Seal-water inlet, inlet valve, to ice maker
2	5304456650	Spring-shutoff arm, ice maker
4	5304458380	Gear
5	5304458383	Plate-mounting
6	5304458386	Screw
7 #	5304458382	Motor-ice maker Svo
8	5304458388	Spacer-hold switch
9	5304456662	Cam
11 #	5304458400	Thermal Cutoff, ice maker
12	5304458379	Harness-wiring
13	5304456665	Thermostat, ice maker
14	5304458384	Screw
15 #	5304456667	Switch-micro, (3)
16	5304458395	Housing, control
17	5304456669	Mold-ice maker, w/therm cut off
18	5304458377	Ejector-ice
18*	241522901	Harness-wiring, icmkr/container
19	5304458378	Cup-water inlet
21	5304458390	Ice Stripper
22	5304458375	Shut-off Arm
23	5304458394	Screw
24	5304458391	Lever Arm
25	5304456676	Screw, M 4x12.8 #2, lever arm/sprt
27	5304458385	Screw
29	5304458393	Screw
30	5304458387	Screw
31	5304458381	Insulator
32	5304456681	Plate-valve switch
33	5304456682	Spring, timing adjust
34	5304455684	Screw, plazscrew, 8-10 x 1/2, (3)
35	5304456684	Screw
36	5304458376	Cover-ice maker
37	5304408583	Spring-timing adj
38	5304458398	Clip
39	5304458399	Conductor-heat
40	5304458401	Clip-retainer
41	5304456689	Washer, nylon
42	218515403	Clip-grille
43	241720601	Extension
45	5304455650	Screw, hex washer head, 8-15A x 0.625, low profile
51	241796403	Tube-water fill, extension
55 #	241734301	Valve-water, triple solenoid
55*	218709101	Screw, hex head, 10-32 x 0.500
55*	240363602	Screw-shoulder
60	5304455651	Screw, hex washer head, 8-15A x 0.500
64	5304455846	Clamp, .31 ID, steel, water tube
66	5304458374	Bracket-ice maker
67	5304458392	Switch-on/off
*	240352102	Connector-water, straight
*	241583301	Deflector-air, ice maker
*	241587402	Deflector-ice
*	5304458389	Screw
* #	241709801	Ice Maker, radius cube, 115 V, no instl parts

WIRING SCHEMATIC



WIRING DIAGRAM



2419129