



PROFESSIONAL GRILLS



Maybe it's the searing heat and smoke that lock-in juices and flavor. Or maybe it's the joy of entertaining family and friends outdoors. Whatever it is, food cooked outdoors simply tastes better. With Lynx outdoor kitchen products, you can enjoy that wonderful experience whenever you like by turning your backyard into a beautiful cooking and entertaining center. Imagine your own Lynx outdoor kitchen that includes a grill, side burners, warming drawer, utility drawers and a cocktail station. Lynx offers everything you'll need to complete your outdoor kitchen. Use your creativity to put together the outdoor kitchen that best suits your cooking and entertaining style.



ProSear

Lynx has advanced infrared cooking with the introduction of ProSear. Our ProSear models are equipped with advanced technology ceramic infrared burners and multi-position valves that provide a full range of control over the heat output. This exclusive feature allows temperatures to be set for the high intensity heat needed for searing steaks down to gentle temperatures desired for cooking fish and poultry. The Lynx 30", 42" and 54" grills are available with ProSear burner(s) in addition to traditional red brass burner(s).



Red Brass Burners & Radiant Heat Distribution

Lynx's powerful red brass burners radiate heat directly through specially designed, pyramid shaped ceramic briquettes, which are carefully arranged to distribute heat evenly across the entire grilling surface.



Rotisserie System

Lynx grills feature a two-position rotisserie and 3-speed motor to accommodate a wide variety of foods and to ensure optimal speed and maintain proper distance from the infrared rotisserie burner.



Smoker Drawer

Smoker system with dedicated burner provides smoke with minimal heat for effective smoking and flavoring. Just add wood chips to give foods a delicious smoked flavor.



Electronic Ignition

Electronic 9-volt battery ignition provides reliable, easy operation. With the push of a button, you provide ignition to all burners. Ignition system is completely sealed and weather resistant.



Side Shelves

Freestanding models feature side shelves which not only fold down, but can be removed and flipped over to become convenient serving trays.



Integrated Electrical System

A single point electrical connection delivers power to the grill surface light and rotisserie motor jack. (shown here).



Interior Storage Shelves

Freestanding models feature deeper doors with shelves allowing convenient storage of larger items (rotisserie motor, bottles and supplies). Shelves are removable.



Grill Surface Light

Don't let sundown end your grilling time. Simply push a button and light the entire grilling surface with an internal electric halogen light.



Temperature Gauge

Attractive, easy to read, flush-mounted hood thermometer tells you when your grill is ready for cooking.



Signature Polished Highlights

Hand-polished edges and accents to enhance the beauty of the all-welded stainless steel construction.

Professional Grills



Model L30R shown with access doors.

Island shown for product display only



As shown Model L30FR

30" Professional Grill

- Two red brass burners produce a total of 50,000 BTU's
- 840 sq. in. cooking surface (600 primary, 240 secondary)
- 9V electronic ignition
- Grill surface light
- Temperature Gauge
- Smoker drawer with dedicated burner (with non-ProSear model only)
- Two piece stainless steel grates for easy removal and cleaning
- Two position rotisserie with heavy-duty, 3-speed motor and rear infrared burner (with rotisserie model only)

Built-in	Freestanding	Description
L30	L30F	Non-Rotisserie
L30R	L30FR	w/Rotisserie
L30PSR	L30PSFR	1 ProSear IR w/Rotisserie
L30APSR	L30APSR	All ProSear IR w/Rotisserie



Model L36R shown with access doors.

Island shown for product display only



As shown Model L36FR

36" Professional Grill

- Three red brass burners produce a total of 75,000 BTU's
- 935 sq. in. cooking surface (640 primary, 295 secondary)
- 9V electronic ignition
- Grill surface light
- Temperature Gauge
- Smoker drawer with dedicated burner
- Three piece stainless steel grates for easy removal and cleaning
- Two position rotisserie with heavy-duty, 3-speed motor and rear infrared burner

Built-in	Freestanding	Description
L36R	L36FR	w/Rotisserie

Professional Grills



Island shown for product display only

Model L42R shown with access doors and drawers.



As shown Model L42FR

42" Professional Grill

- Three red brass burners produce a total of 75,000 BTU's
- 1200 sq. in. cooking surface (855 primary, 345 secondary)
- 9V electronic ignition
- Grill surface light
- Temperature Gauge
- Smoker drawer with dedicated burner
- Three piece stainless steel grates for easy removal and cleaning
- Two position rotisserie with heavy-duty, 3-speed motor and rear infrared burner

Built-in	Freestanding	Description
L42R	L42FR	w/Rotisserie
L42PSR	L42PSFR	1 ProSear IR w/Rotisserie



54" (All Grill) only



Island shown for product display only

Model L54PSR shown with access doors.



As shown Model L54PSFR

54" Professional Grill (All Grill)

- Three red brass burners + one ProSear burner produce a total of 100,000 BTU's
- 1555 sq. in. cooking surface (1110 primary, 445 secondary)
- 9V electronic ignition*
- Dual grill surface lights
- Temperature Gauge*
- Two smoker drawers with dedicated burners
- Stainless steel grilling grates for easy removal and cleaning*
- Two position rotisserie with heavy-duty, 3-speed motor and two rear infrared burners

*Common to all 54" models.

54" (30" Grill with Prep Center)

- Two red brass burners produce a total of 50,000 BTU's
- 840 sq. in. cooking surface (600 primary, 240 secondary)
- Grill surface light
- Smoker drawer with dedicated burner
- Dual side burners feature two 15,000 BTU sealed brass burners
- Solid Maple cutting board
- Three large Storage Drawers
- Two position rotisserie with heavy-duty, 3-speed motor and rear infrared burner
- Freestanding application only

Built-in	Freestanding	Description
L54PSR	L54PSFR	1 ProSear IR w/Rotisserie
N/A	L5430FR2B	w/Rotisserie & 2 SB. Dwr. & Board



As shown Model L5430FR2B

Professional Grills



Island shown for product display only

Model L27R shown with access doors.



As shown
Model L27FR

27" Professional Grill

- Two red brass burners produce a total of 50,000 BTU's
- 685 sq. in. cooking surface (470 primary, 215 secondary)
- 9V electronic ignition
- Smoker drawer
- Two piece stainless steel grates for easy removal and cleaning
- Rotisserie with heavy-duty motor and infrared burner (rotisserie model only)

Built-in	Freestanding	Description
L27	L27F	Non-Rotisserie
L27R	L27FR	w/Rotisserie

CocktailPro (Freestanding)

- Stainless steel sink and faucet with water filtration system
- Insulated ice bin with sliding stainless steel cover
- Drain board and slide-away cutting board
- Built-in bottle opener with integral cap catcher
- Bottle boots for chilling juices, wines and mixers
- Speedrail for quick access to bottles
- Upper serving shelf optional

Just like our freestanding grills, the freestanding CocktailPro features access doors with built-in storage shelves. Ideal for keeping back-up liquors and mixers.



As shown Model CS30FS
(Includes optional serving shelf)



As shown
Model CS30

CocktailPro (Built-in)

The ultimate complement to the ultimate outdoor island. Offers the same features of the freestanding model, including insulated ice-bin, chilled bottle boots, front bottle rail, drainboard and sink with filtration system, and a built-in bottle opener with cap catcher and towel rack.

Side Burners

Another Lynx innovation, modular Side Burners can be easily integrated into any outdoor kitchen for the added convenience of traditional rangetop cooking. The 15,000 BTU brass burners are capable of delivering intense high heat or a low temperature. Available for built-in or freestanding cart mounted applications. Burners and burner basins are sealed and easy to clean. A stainless steel cover protects the burners when not in use.

Models LSB1 (single), LSB2 (double)



Double Side Burner with Prep Center

This convenient Double Side Burner features an integral food preparation center with a maple cutting board and extra-deep utility drawer for oversized utensils. To make cooking even easier, two 15,000 BTU brass burners can deliver intense high heat or a low temperature. Side burner bar grate design accommodates griddle plate accessory. Available for built-in application only.

Model LSB2PC



ProSear Grill Extender

Enables you to add a dedicated searing station to any outdoor kitchen. ProSear burner delivers intense and controllable infrared heat. Stainless steel grilling grates and a fully extendable drip pan make cleaning easy. A stainless steel cover protects the unit when not in use. Available for built-in or cart mounted application.

Model LPSGE

ProSear



ProSear Pod

This 30" Infrared Pod features an extended-width searing surface with 600 sq. in. of usable space. Two ProSear burners deliver intense and controllable infrared heat. Stainless steel grilling grates are easy to remove and clean. A fully extendable drip pan glides on commercial stainless steel rollers. A stainless steel cover protects the unit when not in use. Available for built-in applications only.

Model L30PSP

ProSear



30" Warming Drawer

Temperature settings from 90° to 220° offer the flexibility to keep breads warm or poultry piping hot. Equipped with two removable steam pans, lids and steam racks. Moist and crisp settings allow you to keep food at the desired texture. Covered heating element enables use as a towel or robe warmer. Weather resistant stainless steel. "On" indicator reminds you when the drawer is on.

Model L30WD

42" Convenience Center with Warming Drawer

All the features of the 30" Warming Drawer, plus an LP tank compartment/storage cabinet and Utility Drawer that holds oversized grill tools—all in one convenient unit. Sliding tray facilitates changing LP tank.

Model L42CC



Utility Drawers

Double drawers in a full enclosure, designed to slide into an island cut-out for easy installation. 22" depth accommodates oversized grill tools and provides almost 3,000 cu. in. of storage space. Self-closing design glides on commercial stainless steel rollers. Rigid, heavy gauge, welded construction and polished highlights provide a highly functional and attractive storage system. Also, available in an XL model for twice the capacity.

Models LUDE, LUDXL



Access Doors

Access doors are frame mounted and provide convenient storage areas directly below your grill or other areas of your outdoor kitchen. Doors are available to match equivalently-sized grills. Heavy duty magnetic latches provide easy closing. Rigid welded construction ensures strength and longevity. (18", 27" and 36" models do not include storage shelves and polished handles).

Models LDR18/21/27/30/36/42



Sliding Tank Tray

This optional sliding tray is the convenient way to access and replace LP tanks. Easily installed with four screws. Available for 30", 42" and 54" freestanding models.



Vinyl Cover

Protect your grill from the elements when not in use with this attractive, heavyweight vinyl cover. Available in sizes to fit any Lynx grill. Felt-lined and zippered front for easy cart access.



Wok and Wok Grate

Now you can enjoy wok cooking right on your Lynx side burner with this convenient Wok and Wok Grate (sold separately). For use with single or double Side Burners only.



Griddle Plate

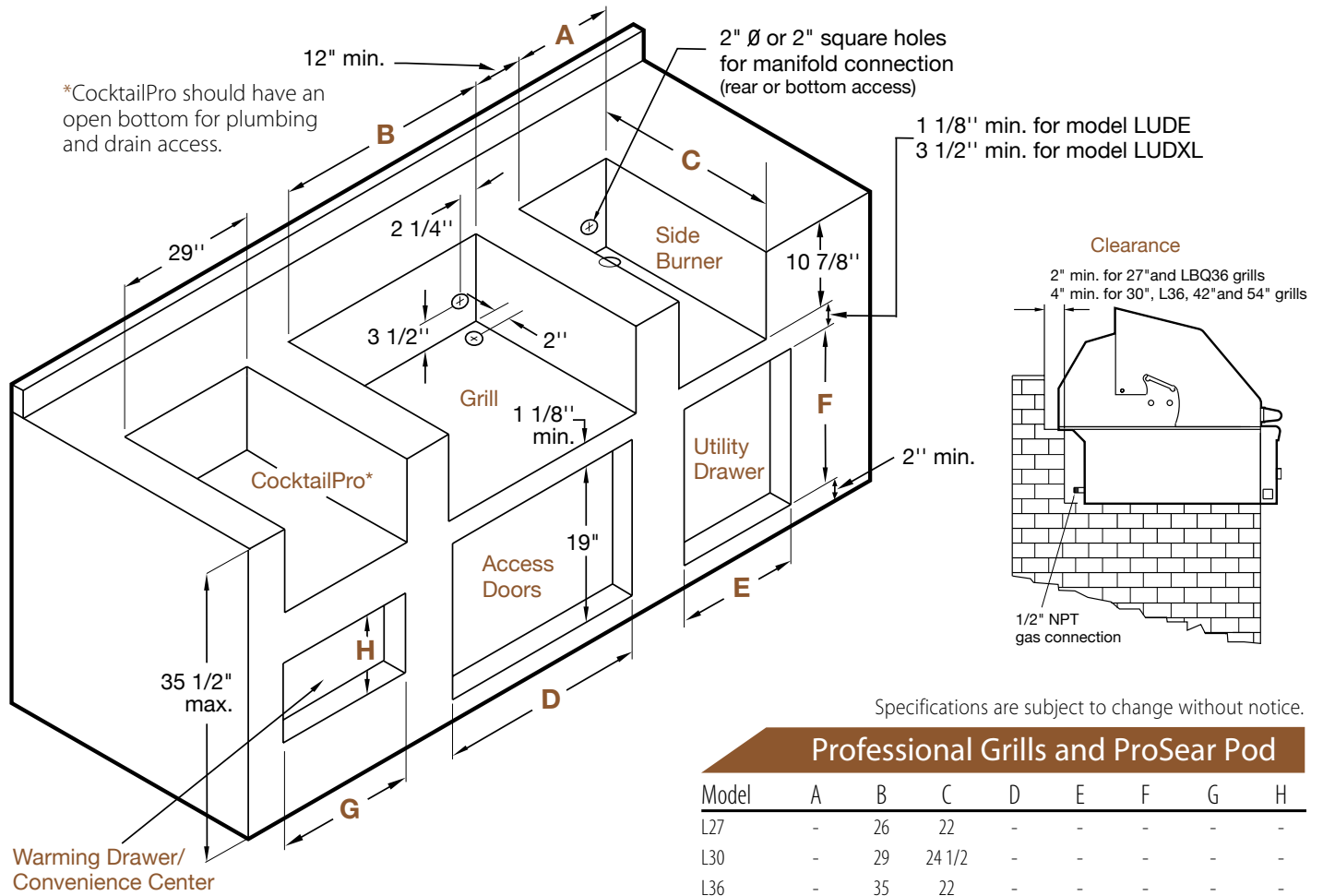
Enjoy pancakes, bacon, hash brown potatoes, omelettes and countless other meals with this handy griddle plate. The easy-to-use plate sits on the grill surface and is made of thick-gauge, stainless steel. Can also be used on model LSB2PC.



Insulated Jacket

The insulated jacket is required for installations in combustible enclosures. Lynx insulated jackets are available for all built-in grill models.





Specifications are subject to change without notice.

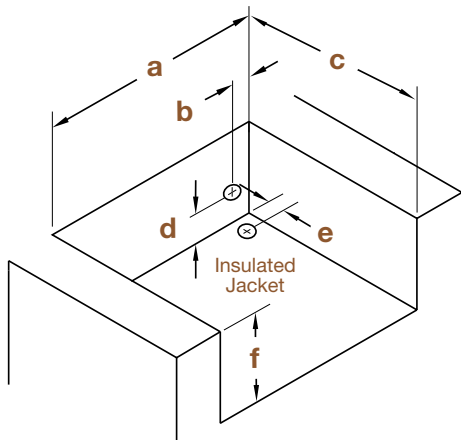
Professional Grills and ProSear Pod

Model	A	B	C	D	E	F	G	H
L27	-	26	22	-	-	-	-	-
L30	-	29	24 1/2	-	-	-	-	-
L36	-	35	22	-	-	-	-	-
L42	-	41	24 1/2	-	-	-	-	-
L54	-	53	24 1/2	-	-	-	-	-
L30PSP	-	29	24 1/2	-	-	-	-	-

Note: Insulated jacket required for all grills installed into a combustible enclosure. See detail below.

With Insulated Jacket Installed

Model	a	b	c	d	e	f
LJ27	33	5	24	4 1/2	3	11 5/8
LJ30	36	5	26 1/2	4 1/2	3	11 5/8
LJ36	42	5	24	4 1/2	3	11 5/8
LJ42	48	5	26 1/2	4 1/2	3	11 5/8
LJ54	60	5	26 1/2	4 1/2	3	11 5/8



Complementary Products

Model	A	B	C	D	E	F	G	H
Access Doors								
LDR18	-	-	-	16 1/4	-	-	-	-
LDR21	-	-	-	19 1/4	-	-	-	-
LDR27	-	-	-	25 1/4	-	-	-	-
LDR30	-	-	-	28 1/4	-	-	-	-
LDR36	-	-	-	34 1/4	-	-	-	-
LDR42	-	-	-	40 1/4	-	-	-	-
Side Burners and ProSear Grill Extender								
LSB1	12 1/8	-	22 1/2	-	-	-	-	-
LSB2	12 1/8	-	22 1/2	-	-	-	-	-
LSB2PC	24 1/4	-	22 1/2	-	-	-	-	-
LPSGE	12 1/8	-	22 1/2	-	-	-	-	-
Utility Drawers								
LUDE	-	-	24	-	12 1/8	19 1/4	-	-
LUDXL	-	-	24 1/4	-	17 1/4	18 9/16	-	-
Warming Drawers								
L30WD	-	-	20 1/2	-	-	-	28 1/2	10
L42CC	-	-	24 1/2	-	-	-	40 1/4	19 3/8
CocktailPro								
CS30	-	-	22 3/4	-	-	-	-	-

Technology Transformed To Art

Lynx began as the vision of a group of people with over a century of collective experience, who for 35 years were manufacturing top-of-the-line stainless steel products for the commercial food service industry. Lynx has taken that same quality, workmanship, service and innovation and incorporated it into the Lynx Professional Grills line of products. The combination of the best materials, fine craftsmanship and original ideas is why Lynx products are in a class of their own.

These original commercial products are found in leading restaurants, hotels and theme parks across the USA:
TGI Fridays • Applebee's • Houston's • Red Lobster • Hard Rock Café • Wolfgang Puck's • Cheesecake Factory • Red Robin • Planet Hollywood • Hilton • Hyatt • Four Seasons Marriott Le Meridian • Sheraton • Conrad International Bellagio • New York New York • MGM Grand • Treasure Island • Mirage • Paris • Venetian • Excalibur • Manadalay Bay • Riviera • Desert Inn • Hard Rock Hotel • Disney World Universal Studios Orlando and Hollywood

For more information, visit us at www.lynxgrills.com



PROFESSIONAL GRILLS

6023 East Bandini Blvd.
Commerce, CA 90040
Phone: (888) 879-2322

