

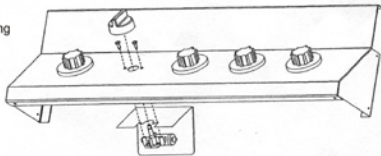
REPLACING IGNITORS AND ELECTRODE IGNITION INSTRUCTIONS



It is recommended that burner removal be performed by a qualified service person

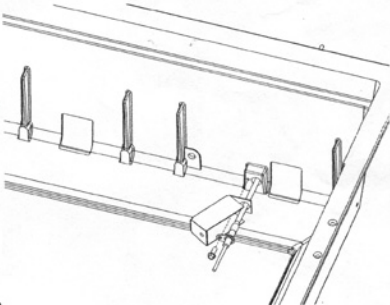
1. Disconnect the gas supply to the grill. Remove warming rack, cooking grids & sear plates.

2. To remove the rotary ignitor, first remove the control knob by pulling it away from the control panel. Next remove the two screws fastening the assembly to the control panel. The heat shield and ignitor can now be removed from the underside of the control panel and the wires disconnected from the ignitor.



3. To replace, connect the wires to the ignitor, then holding it in place underneath the control panel, start screwing in the 2 fastening screws. Slide the heat shield back into place between the ignitor and the underside of the control panel so that the slots line up with the mounting screws. Tighten the two fastening screws.

4. To remove the electrode and collector box, first bend the box back in the opposite direction from the opening in the box. Remove the 1/4" hex head screw fastening the electrode and collector box while pulling the wire out of the opening.



5. To replace, feed the electrode wire through the opening until the box is against the base of the grill. Refasten the collector box and electrode to the base with the 1/4" hex head screw. Bend the collector box closed so that it is parallel to the burner with its opening facing the burner. Attach the wire to the ignitor.

6. Test the ignition system to confirm its operation before re-assembling the grill.

