



INSTALLATION INSTRUCTIONS

BUILT-IN WINE COOLERS & BEVERAGE CENTERS

For use with models:

EF24LWCZ2SS, EF24RWCZ2SS

EF24LWCZ1SS, EF24RWCZ1SS

EF24LBCSS, EF24RBCSS

TABLE OF CONTENTS

Important Safety Instructions	1	Installation Instructions	3-4
Customer Service Information	2	Unpacking the Appliance	3
Planning the Installation	2-3	Tools Required for Installation	3
Electrical Requirements	2	Installation	4
Location Requirements	3	Handle Installation	4
Dimensions	3	Installation Checklist	4

IMPORTANT:

- ◇ **INSTALLER:** In the interest of safety, read this installation instruction manual completely, before you begin the installation process. Leave these installation instructions with the homeowner.
- ◇ **HOMEOWNER:** Keep these installation instructions for future reference. Save these installation instructions for the local electrical inspector's use.

IMPORTANT SAFETY INSTRUCTIONS

What You Need to Know About Safety Instructions

Warnings and Important Safety Instructions appearing in this guide are not meant to cover all possible conditions and situations that may occur. Common sense, caution and care must be exercised when installing, maintaining or operating an appliance.

Always contact Dacor® about problems or conditions you do not understand.

Safety Symbols, Words, and Labels

▼ DANGER

DANGER – Immediate hazards which **WILL** result in severe personal injury or death.

▼ WARNING

WARNING – Hazards or unsafe practices which **COULD** result in severe personal injury or death.

▼ CAUTION

CAUTION – Hazards or unsafe practices which **COULD** result in minor personal injury or property damage.

To reduce the risk of fire, electric shock, serious injury, or death when installing or using this appliance, follow basic safety precautions, including the following:

▼ DANGER

IMPORTANT: Child entrapment and suffocation are not problems of the past. Junked or abandoned appliances are still dangerous, even if they sit out for “just a few days.” When taking an appliance out of service, please follow the instructions below to help prevent accidents:

- Take off the door.
- Leave the racks in place so children cannot easily climb inside.
- Cut the prongs off the power cable plug and discard them.
- Cut the power cable off and discard it separately from the old appliance.

IMPORTANT: The interior lights on this appliance emit class 1M laser radiation.

- Only a qualified service technician should replace the light bulbs or remove the light covers.
- Service technicians: To avoid severe eye injury or electric shock, disconnect power to the appliance before removing the light covers or changing the light bulbs.

▼ WARNING

1. This appliance is to be installed only by a qualified installer according to these installation instructions.
2. This appliance must be installed in a cabinet or counter before it is used.

▼ WARNING

3. Only a qualified service technician should service this appliance, unless the service procedure is specifically recommended in the literature accompanying it. Before performing any type of service, disconnect the unit from electric power.
4. To avoid fire or explosion, do not operate the appliance in the presence of explosive materials or fumes, such as gasoline.
5. To protect the appliance from possible damage, allow it to stand in place 1/2 to 1 hour after delivery before turning the electricity on. Doing so allows the refrigerant and system lubrication to reach equilibrium.
6. Never allow anyone, including children to sit, stand, or climb on any part of the appliance, including the door. Doing so may cause, damage, serious injury, or death.
7. Do not tamper with the controls.
8. Do not allow the ventilation grill below the door to become obstructed. Make sure there is always good ventilation in front of the appliance.
9. If “F0” or “F1” appears on the display, a fault has occurred. Unplug the appliance and contact Dacor customer service.

CUSTOMER SERVICE INFORMATION

Any questions or problems not related to installation should be directed to your Dacor dealer or the Dacor Customer Service Department.

Dacor Customer Service

1-800-793-0093 (U.S.A. and Canada)

Monday — Friday 6:00 am to 5:00 pm Pacific Time

website: www.dacor.com

If the unit requires service, be sure to have the model and serial number available when you call. You'll find these numbers on the serial number plate located inside the door on the lower left side wall.

All Dacor appliances are subject to continuous improvement. The manufacturer reserves the right to make modifications in the shape, equipment, and technology.

PLANNING THE INSTALLATION

IMPORTANT: Observe all governing codes and ordinances during planning and installation.

ELECTRICAL REQUIREMENTS

⚠ DANGER

ELECTRICAL SHOCK HAZARD – Plug this unit only into a grounded 3-prong electrical outlet.

- Do not remove the ground prong.
- Do not use a 2-prong adapter.
- Do not use an extension cord.
- Do not use a power cord that is frayed or damaged.

Failure to comply with the above can result in fire, electric shock, or death.

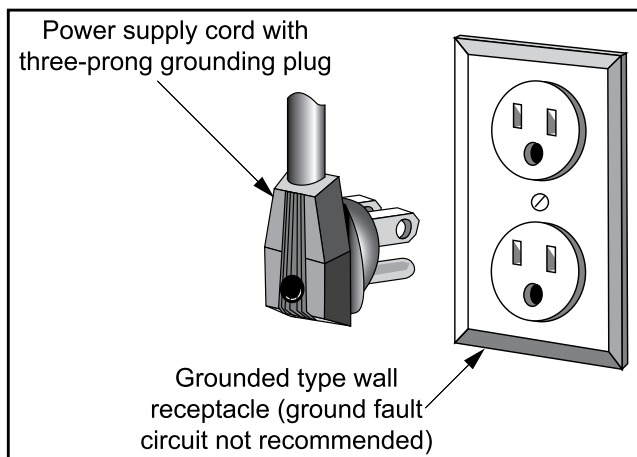
This appliance should have its own separate, 110-120 VAC, 10 amp grounded circuit controlled by a circuit breaker or fuse. Use a 15 Amp circuit for side-by-side installations. Follow the National Electrical Code and local codes and ordinances when installing the electrical outlet.

The electrical outlet must accept a grounded 3-prong power cord. A ground fault circuit interrupter (GFCI) type is not recommended because it may cause interruption of operation. See "Location and Cabinet Layout Requirements" for guidelines regarding location of the electrical outlet.

This appliance complies with current safety regulations and EC directives 73/23/EEC and 89/336/EEC.

In addition, this appliance complies with UL250 and is designed to cool and store wine and beverages.

The refrigerant system on this appliance has been tested for leaks.



PLANNING THE INSTALLATION

LOCATION REQUIREMENTS

Operating Environment

- ◇ Do not install this appliance where it is hit by direct sunlight or near a stove, range top, radiator, or similar heat source.
- ◇ The appliance is set to operate within the room temperature limits listed below. These temperature limits should not be exceeded.

ROOM TEMPERATURE REQUIREMENTS FOR PROPER OPERATION

61°F to 90°F (16°C to 32°C)

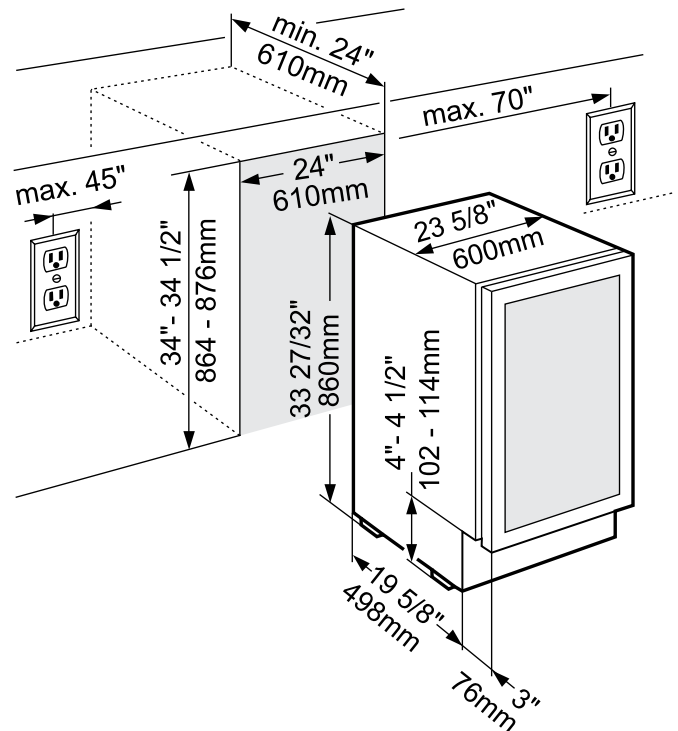
Location and Cabinet Layout Requirements

The Dacor wine cooler or beverage center can be recessed in an opening between cabinets or installed at the end of a cabinet run using a side panel to enclose it

IMPORTANT:

- ◇ The installation location should permit the door to open a minimum of 90°. The maximum angle the door can open is 105°.
- ◇ The appliance must be located so that the grill on the bottom is not obstructed.
- ◇ The electrical outlet must be accessible after installation so that the user can unplug the appliance.
- ◇ The floor under the appliance must be flat and level with the surrounding floor.

NOTE: The overall height of the appliance can be increased by 1 1/8" (28.6 mm) by adjusting the feet. The cut-out dimensions allow for additional clearance for sliding the appliance into its recess based on how you chose the final installation to look.



Cabinet Cut-Out and Product Dimensions

INSTALLATION INSTRUCTIONS

UNPACKING THE APPLIANCE

⚠ WARNING

1. If you receive a damaged product, immediately contact your dealer or builder. Do not install or use a damaged appliance.
 2. To prevent personal injury, property damage, or damage to the unit, this appliance should only be unpacked and set up by two people.
 3. Keep packaging materials away from children. Plastic sheets and bags can cause suffocation.
 4. Keep the appliance out of the weather. Avoid placing the appliance in direct sunlight or near a stove, range top, radiator, or similar heat source.
 5. To protect the unit from possible damage, allow it to stand in place 1/2 to 1 hour after delivery before turning the electricity on. Doing so allows the refrigerant and system lubrication to reach equilibrium.
- ◇ Protect the floor surface before you un-crate the unit. Put the unit on cardboard, plywood, or preferably a carpet remnant (backing up) placed on the floor.
 - ◇ Keep the floor protected when moving the appliance.

TOOLS REQUIRED FOR INSTALLATION

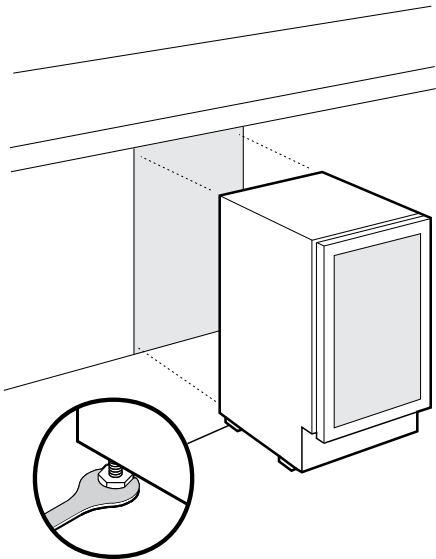
Make sure that you have the necessary tools and materials available for a proper installation.

- ◇ Phillips screwdriver set
- ◇ Level
- ◇ Crescent wrenches
- ◇ 3 mounting screws (included)
- ◇ Allen wrench (included)
- ◇ 2 Set screws (included)
- ◇ Handle (included)

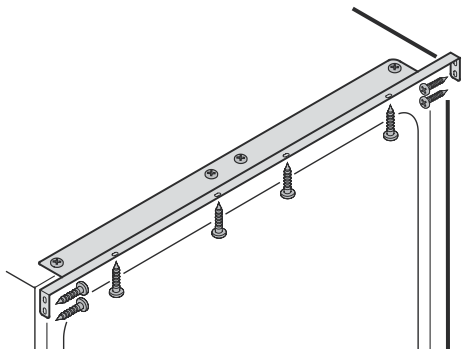
INSTALLATION INSTRUCTIONS

INSTALLATION

1. Adjust the appliance height to fit the cut-out using the four adjustable feet on the underside of the appliance.
2. Make sure all four feet hit the floor and that the appliance does not rock.



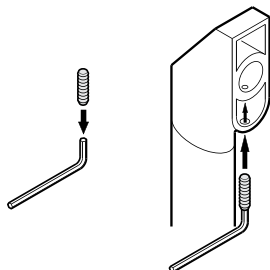
3. Place the level on one of the racks inside the appliance. Check to make sure the appliance is level front to back and side to side. Re-adjust the feet if necessary.
4. Slide the appliance into the cut-out.
5. Attach the appliance to the front of the cut-out as shown using the four mounting screws included with the unit. The screws can be installed into the bottom of the counter and/or into the cabinet in any combination. All four screws must be used.



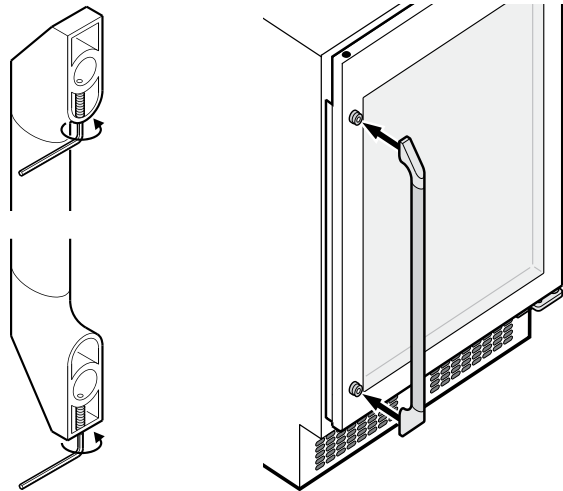
6. Connect the power cord to the electrical outlet. Turn the appliance on several hours before loading it.

HANDLE INSTALLATION

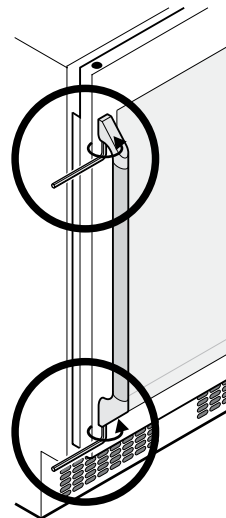
1. Put one of the included set screws on the end of the included allen wrench.
2. Insert the set screw into one end of the handle.



3. Thread the set screw two turns into the handle.
4. Repeat steps 1 to 3 for the other end of the handle.
5. Put both ends of the handle over the handle mounting pins.



6. Tighten both set screws into place. Do not overtighten.



NOTE: Dacor recommends cleaning the appliance according to the cleaning instructions in use and care manual before use.

INSTALLATION CHECKLIST

IMPORTANT: The importance of the proper installation of your Dacor Built-In appliance cannot be overemphasized. To ensure a safe and proper installation, the following checklist should be completed by the installer to ensure that no part of the installation has been overlooked.

- Has the appliance been secured in place?
- Are all leveling legs extended down to make contact with the floor? Is the unit level?
- Is the power cord plugged into a properly grounded dedicated 3-prong outlet, which has been installed in accordance with all applicable electrical codes?
- Have any installation/service problems been noted on the product registration card? Has the registration card been mailed?

**Specifications contained within are subject to change without notice.
No liability is assumed by DACOR for changes in specifications.**

The information and images in this book are the copyright property of Distinctive Appliances, Inc. Neither this book nor any information or images contained herein may be copied or used in whole or in part without the express written permission of Distinctive Appliances, Inc.