



eligible models

\$20

- KM18
- KS12
- KS15

\$25

- XQ05
- XQ06
- XQ08
- XQ10
- XQ12

\$100

Quietmaster Series models

- SL28L30
- SL36L30A
- SM18L30A
- SM21L30
- SM24L30
- SS08L10
- SS10L10
- SS12L10
- SS14L10
- SS12L30
- SS16L30

\$100 rebate is exclusive to the Quietmaster Series of Programmable and Heavy Duty models

Qualifying purchase MUST be made between **March 1, 2010** and **July 5, 2010** from an authorized Friedrich dealer. Only the models listed on this form are eligible for a rebate, and must be purchased under program rules.

The original rebate form must be COMPLETELY FILLED OUT. Model number and serial number are required to process claims. If your unit came with the original carton, this information is located on the UPC label (sample pictured below). If you don't have the original carton you may consult your operating guide (or visit our website at [www.friedrich.com/support/support\\_videos.html](http://www.friedrich.com/support/support_videos.html)) for location of model number and serial numbers on the unit.

Complete the following:

Friedrich Dealer Name \_\_\_\_\_ Date Purchased \_\_\_\_\_

Model # (REQUIRED) \_\_\_\_\_ Serial # (REQUIRED) \_\_\_\_\_

First Name \_\_\_\_\_ Last Name \_\_\_\_\_

Address \_\_\_\_\_ Apt./Ste. # \_\_\_\_\_

City \_\_\_\_\_ State \_\_\_\_\_ Zip \_\_\_\_\_

Email address \_\_\_\_\_

May we contact you via email?  Yes, please send me the latest Friedrich news and special offers.

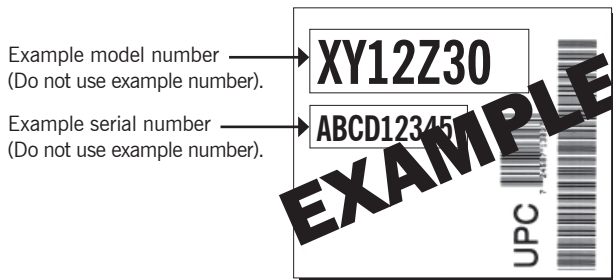
Attach a copy of sales receipt

Be sure the sales receipt lists the model number and name of the authorized dealer (credit card slips will not be accepted). The purchase date must be between March 1, 2010 and July 5, 2010. Mail this completed rebate form along with a copy of the sales receipt to:

**Friedrich Rebate**  
**P.O. Box 2480**  
**San Antonio, TX 78298-2480**

Envelope must be POSTMARKED by July 15, 2010. Please allow up to 90 days for processing.

SAMPLE CARTON LABEL



Need help finding the serial number on your air conditioner?

To see a video showing the location of the model and serial numbers on the actual unit, go to: [www.friedrich.com/support/support\\_videos.html](http://www.friedrich.com/support/support_videos.html)



**PROGRAM RULES... PLEASE READ CAREFULLY.** ONLY eligible models purchased from an Authorized Friedrich Dealer in NY, NJ and PA qualify for a rebate. Qualified models are subject to change based on availability. CLAIMS FROM UNAUTHORIZED DEALERS OR RESELLERS WILL NOT BE ACCEPTED. This form must be returned COMPLETELY FILLED OUT. Forms that are blank, incomplete, illegible or incorrectly filled out will substantially delay processing time. Friedrich Air Conditioning is not responsible for late, lost or misdirected mail. Claims postmarked after July 15, 2010 will not be honored and will be returned unpaid.