

*Frigidaire*

Factory Parts Catalog

Product No.	FGHC2334KE1	FGHC2334KP1	FGHC2344KF1
Series	counter depth	counter depth	counter depth
Color	black	white	stainless
Volts	115	115	115
Wiring Diagram	241912901	241912901	241912901
Owner's Guide	241979200	241979200	241979200
Market	North America	North America	North America
Energy Guide	241935578	241935578	241935579
Service Data Sheet	240389638	240389638	240389638



Electrolux Major Appliances  
 North & Latin America  
 P.O. BOX 212378  
 AUGUSTA, GA 30917

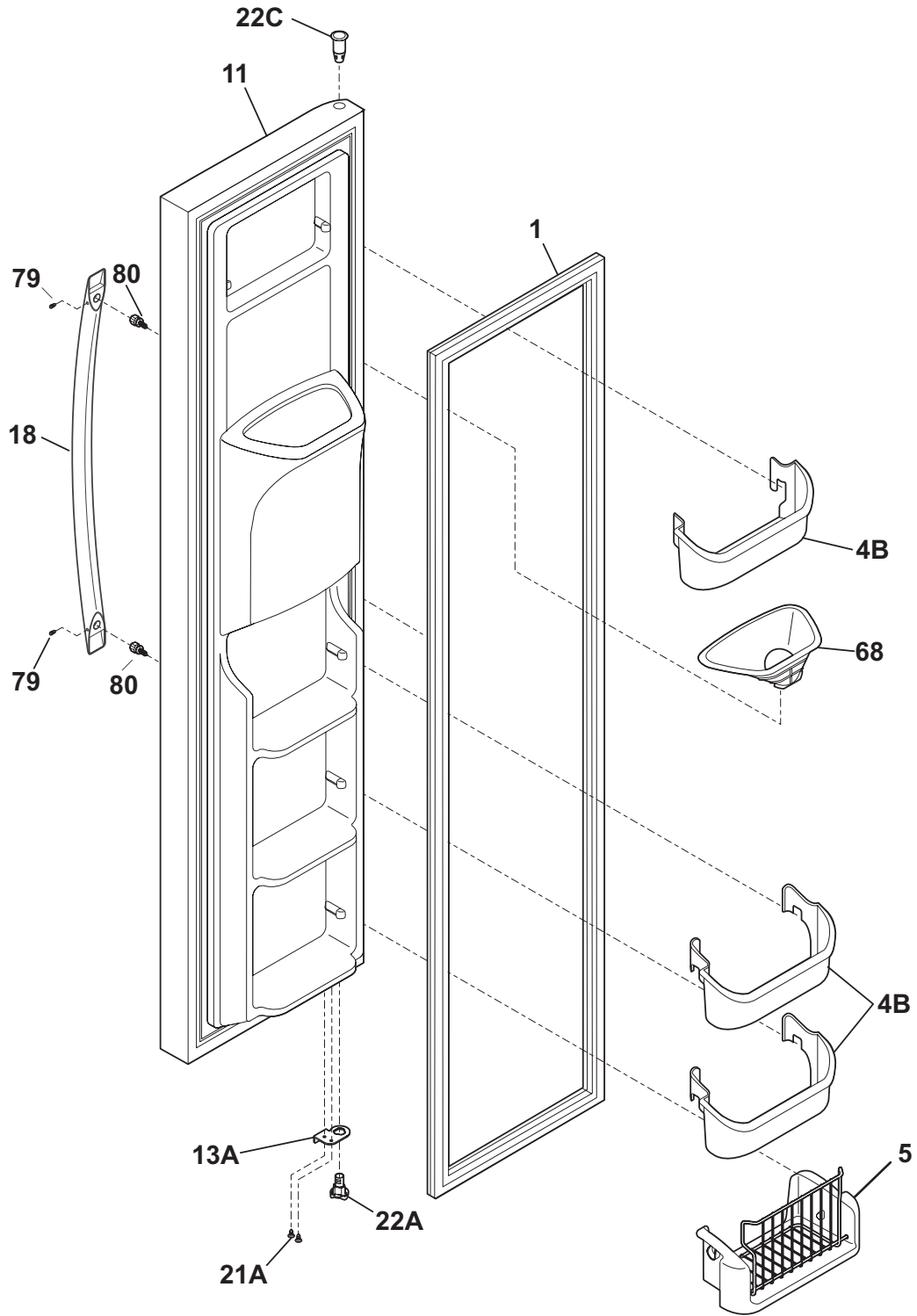
Publication No.  
**5995538880**  
 09/04/23  
 (EN/SERVICE/DCS)  
 137

**SIDE-BY-SIDE  
 REFRIGERATOR**

Model No.  
 FGHC2334K /  
 FGHC2344K

Copyright © 2009 Electrolux Home Products, Inc.  
 All rights reserved.

**FREEZER DOOR**



**F58FFDBFB1**

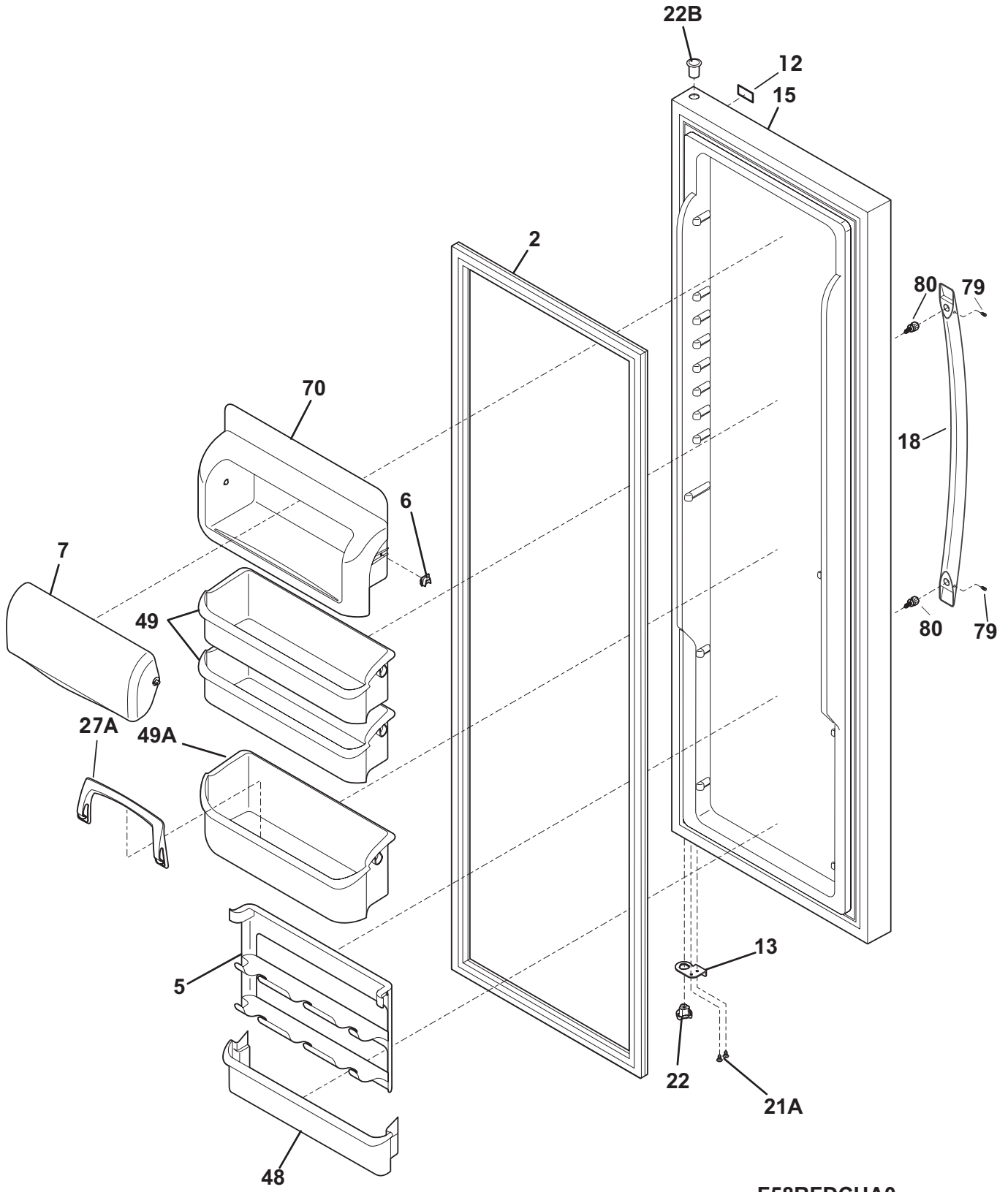
## FREEZER DOOR

---

*Model Index:*    A FGHC2334K (FGHC2334KE1)  
                           B FGHC2334K (FGHC2334KP1)  
                           C FGHC2344K (FGHC2344KF1)

POS. NO	PART NO.		DESCRIPTION
1 #	241510204	A - C	Gasket-frzr door, black, magnetic
1 #	241510202	- B -	Gasket-frzr door, white, magnetic
4B	241511602	A B C	Bin-door
5	241545001	A B C	Bin-tilt out, tilt-out
11	241993806	A - -	Door-frzr, black, complete assy
11	241993804	- B -	Door-frzr, white, complete assy
11	241993807	- - C	Door-frzr, stainless, complete assy
13A	241942604	A B C	Door Stop, black, frzr
18	241930103	A - -	Handle-door, black
18	241930102	- B -	Handle-door, white
18	241930101	- - C	Handle-door, stainless
21A	240442706	A B C	Screw-#10-32 X 3/4, zinc
22A	241990302	A B C	Bearing-hinge(frz), closer
22C	241760402	A - C	Bearing, hinge, top
22C	241760401	- B -	Bearing, hinge, top
68	241946601	A B C	Chute-ice
79	218755405	A B C	Screw-set, 10-32 x 0.650
80	218755504	A B C	Screw-shoulder, #10 AB, handle mounting
*	240352102	A B C	Connector-water, straight
*	240451503	A B C	Screw, ind hex wshr hd, 8-32 x 0.375, trilobe
*	5303918371	A B C	Dispenser heater kit, 115
* #	241834703	A B C	Harness-wiring, door

REFRIGERATOR DOOR



F58RFDCHA0

---

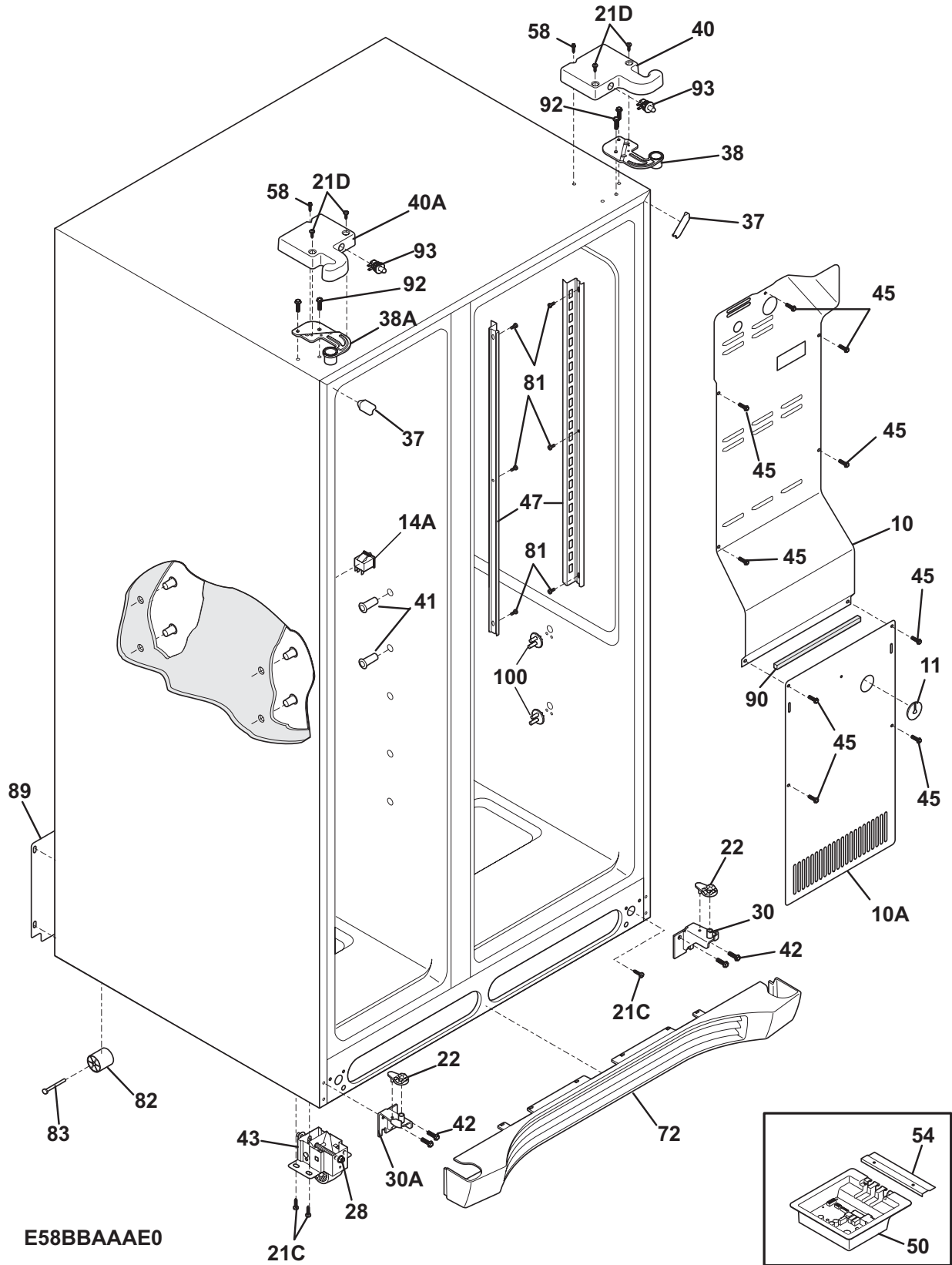
**REFRIGERATOR DOOR**


---

*Model Index:* A FGHC2334K (FGHC2334KE1)  
 B FGHC2334K (FGHC2334KP1)  
 C FGHC2344K (FGHC2344KF1)

POS. NO	PART NO.		DESCRIPTION
2 #	241510203	A - C	Gasket-refr door, black, magnetic
2 #	241510201	- B -	Gasket-refr door, white, magnetic
5	241516102	A B C	Rack-can
6	241515901	A B C	Lug-dairy compartment
7	241515601	A B C	Door-dairy
12	242015201	A B C	Label-nameplate
13	241942603	A B C	Door Stop, black, ref
15	241837281	A - -	Door-refr, black, complete assy
15	241837279	- B -	Door-refr, white, complete assy
15	241837282	- - C	Door-refr, stainless, complete assy
18	241930103	A - -	Handle-door, black
18	241930102	- B -	Handle-door, white
18	241930101	- - C	Handle-door, stainless
21A	240442706	A B C	Screw-#10-32 X 3/4, zinc
22	241990301	A B C	Bearing-hinge, gray
22B	241760404	A - C	Bearing, hinge, top
22B	241760403	- B -	Bearing, hinge, top
27A	240396102	A B C	Retainer, tall bottle
48	241511701	A B C	Bin-door, ref
49	241505301	A B C	Bin-door, 2-liter
49A	241505501	A B C	Bin-door, gallon
70	241515801	A B C	Compartment-dairy, removable
79	218755405	A B C	Screw-set, 10-32 x 0.650
80	218755504	A B C	Screw-shoulder, #10 AB, handle mounting

**CABINET**



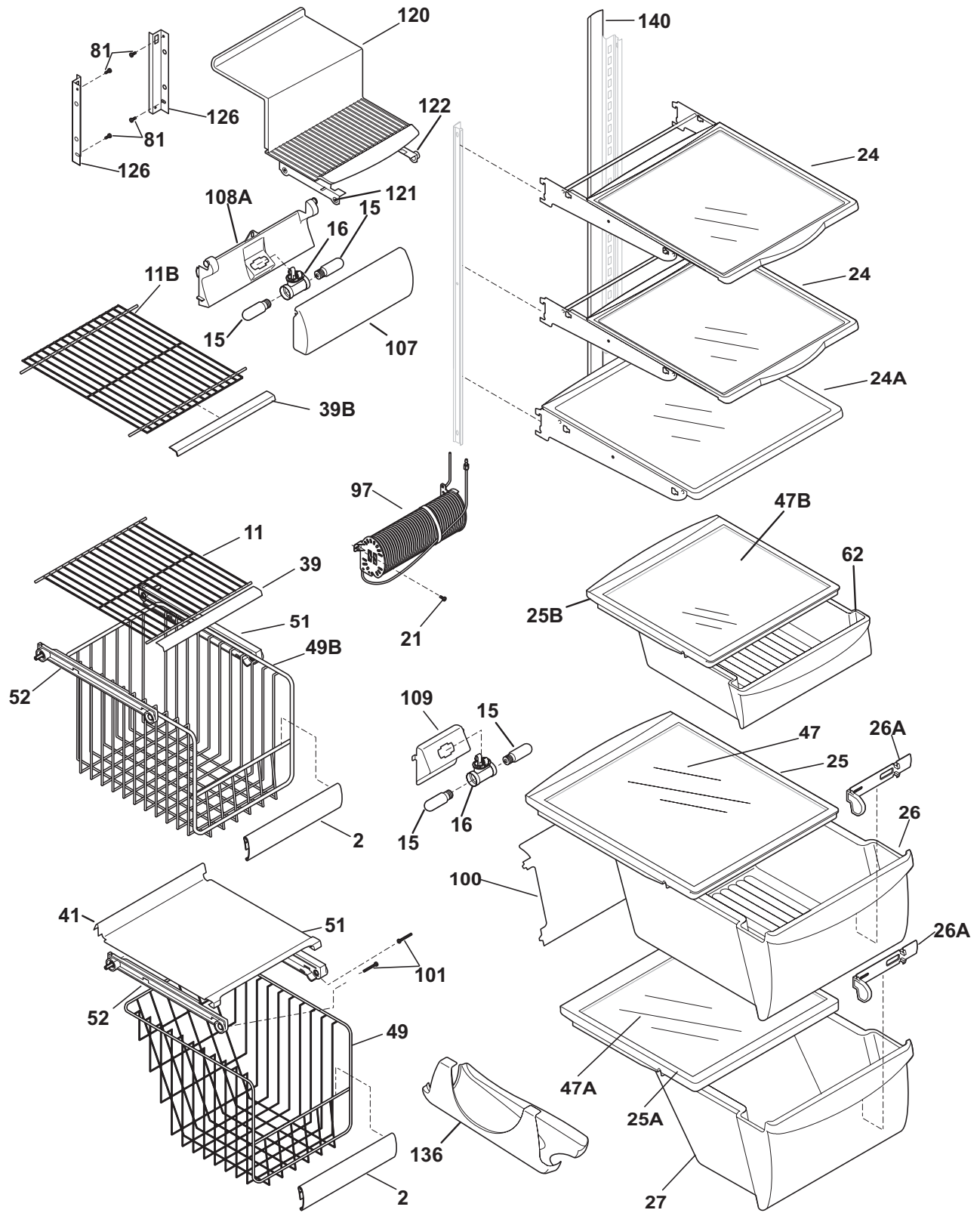
E58BBAAAE0

**CABINET**

*Model Index:* A FGHC2334K (FGHC2334KE1)  
 B FGHC2334K (FGHC2334KP1)  
 C FGHC2344K (FGHC2344KF1)

POS. NO	PART NO.		DESCRIPTION
10	241509804	A B C	Cover-air duct
10A	241719711	A B C	Cover-evap coil, lower
11	5303208309	A B C	Plug-hole, factory test
14A#	241547901	A B C	Switch-light/lamp, frzr door
21C	218252201	A B C	Screw, #8 truss hd, 10-32CA x 0.500
21D	241548003	A B C	Screw, 10-32 x 3/8
22	241917801	A B C	Plate-door closer
22*	218755402	A B C	Screw-set, 10-32 x 0.375
28	240335502	A B C	Bolt-roller adj, hex washer head, 1/4-20 x 4.020, (2), special
30	241917901	A B C	Bracket-lower hinge, RH, w/hinge pin
30A	241917902	A B C	Bracket-lower hinge, LH, w/hinge pin
37	240337610	A - C	Trim-cabinet corner, black, (2)
37	240337608	- B -	Trim-cabinet corner, white, (2)
38	241761301	A B C	Bracket-upper hinge, RH
38A	241761302	A B C	Bracket-upper hinge, LH
40	241946705	A - C	Cover-upper hinge, black, RH
40	241946701	- B -	Cover-upper hinge, white
40*	241835801	A B C	Harness-wiring
40A	241946706	A - C	Cover-upper hinge, black, LH
40A	241946702	- B -	Cover-upper hinge, white, LH
40A*	241891901	A B C	Harness-wiring, freezer
41	241550801	A B C	Grommet-shelf mtg, 1.40" long
41*	241550701	A B C	Grommet-shelf mtg, .96" long
42	240578902	A B C	Screw, hex head, 1/4-20 x 5/8
43	240335006	A B C	Roller Assy, front, (2)
45	241500303	A B C	Screw, hex washer head, 8-18AB x 0.500
47	241513001	A B C	Channel-shelf mtg, side, (2)
50	242000413	A B C	Board-main power
50*	241852501	A B C	Clip, wiring harness
50*	241867901	A B C	Harness-wiring
54	241532401	A B C	Channel
58	218781101	A B C	Screw, pan head, 8-18 x 0.625
72	241969403	A - -	Grille/Kickplate, black
72	241969401	- B -	Grille/Kickplate, white
72	241969405	- - C	Grille/Kickplate
81	5304455650	A B C	Screw, hex washer head, 8-15A x 0.625, low profile
82	5304418225	A B C	Roller, compressor base, rear, (2)
83	5304455655	A B C	Rivet, flat head, 1/4 OD x 1-3/4, roller pin
89	241733902	A B C	Cover-access, w/label
90	218249808	A B C	Seal-coil cover
92	241710601	A B C	Screw, hex washer hd, 1/4 x 7/8, hinge mtg
93	241911704	A - C	Switch, plunger style
93	241911701	- B -	Switch, plunger style
100	241993101	A B C	Support-crisper cvr
100*	241993001	A B C	Support-crisper cvr
*	241890601	A B C	Deflector-air
*	5303321321	A - C	Paint, touch-up, black
*	5303321319	- B -	Paint, touch-up, white

**SHELVES**



F58SEBKBC11

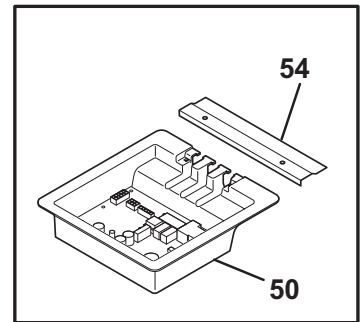
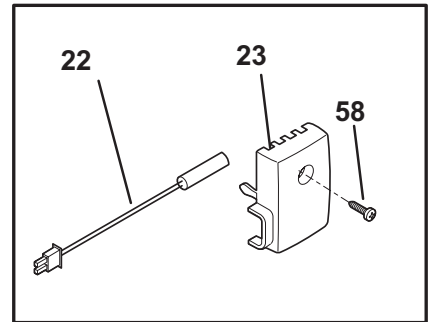
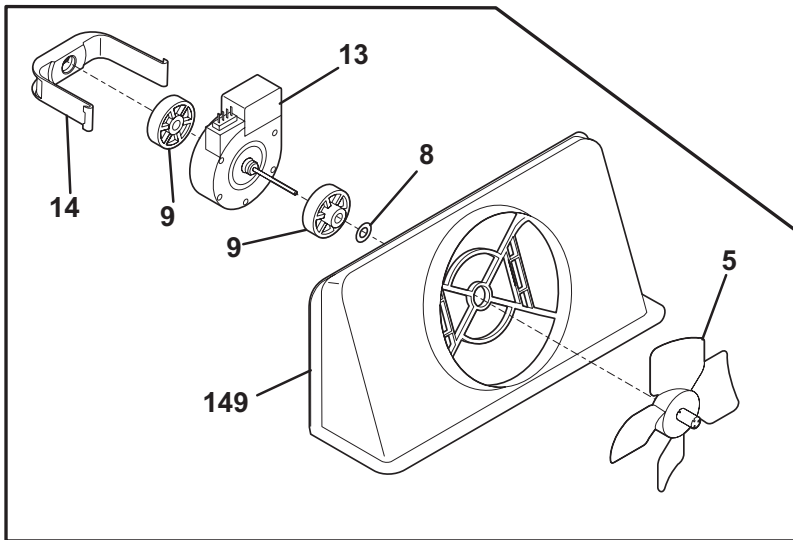
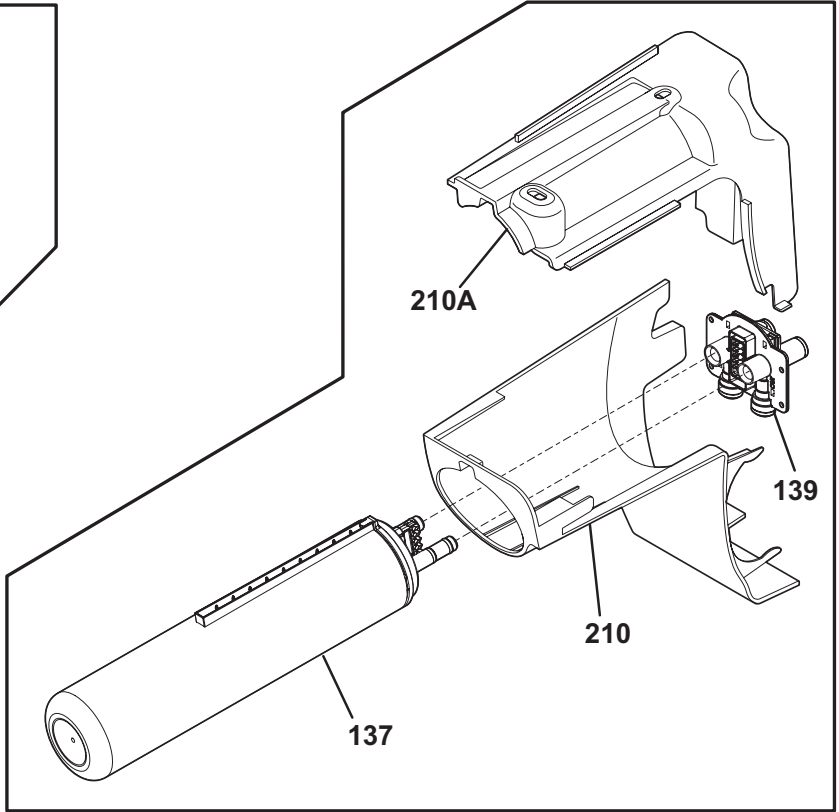
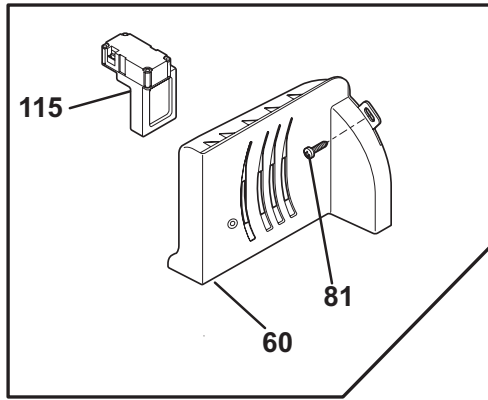


**SHELVES**

*Model Index:* A FGHC2334K (FGHC2334KE1)  
 B FGHC2334K (FGHC2334KP1)  
 C FGHC2344K (FGHC2344KF1)

POS. NO	PART NO.		DESCRIPTION
2	241510608	A B C	Trim-basket
11	241657605	A B C	Shelf-freezer, flip-up
11B	241657506	A B C	Shelf-freezer, fixed wire
15	241552801	A B C	Light Bulb
16	241622802	A B C	Socket-light, frz light
16*	241987601	A B C	Harness-wiring
21	5304455658	A B C	Screw, hx wshr hd sems, 8-15A x 0.625
24	240350137	A B C	Shelf-"Spill-Safe", cantilver, sliding
24A	240355260	A B C	Shelf-"Spill-Safe", fixed
25	240599301	A B C	Cover-crisper pan, upper
25*	240362101	A B C	Clip-slide, cover-crisper
25A	240350902	A B C	Cover-crisper pan, lower
25B	240599802	A B C	Frame-meat pan, cantilever
26	240351061	A B C	Pan-crisper, upper
26*	240349801	A B C	Clip-slide, pan-crisper
26*	241595202	A B C	Clip-slide, pan-crisper
26A	240362201	A B C	Control-humidity
27	240351240	A B C	Pan-crisper, lower
39	240430709	A B C	Trim-shelf, 11.60", front
39B	240430710	A B C	Trim-shelf, 12.86", front
41	241637601	A B C	Baffle-air
47	240350649	A B C	Insert-pan cover, glass
47A	240350603	A B C	Insert-pan cover, glass
47B	240443391	A B C	Insert-pan cover, glass
49	241515001	A B C	Basket-sliding
49B	241514901	A B C	Basket-sliding, upper, full
51	241514501	A B C	Hanger-basket, RH
52	241514601	A B C	Hanger-basket, LH
62	241974601	A B C	Pan-meat
81	5304455650	A B C	Screw, hex washer head, 8-15A x 0.625, low profile
97	241532007	A B C	Water Tank
100	240326304	A B C	Cover-water tank
101	218493101	A B C	Screw, hex washer head, 8-18AB x 1-3/4
107	241753601	A B C	Shield-light, upper
108A	241753701	A B C	Housing-light, upper, fresh food
109	241513202	A B C	Base-crisper light socket
120	241691701	A B C	Shelf-ice cream
121	241504701	A B C	Rail-ice cream shelf, LH
122	241504702	A B C	Rail-ice cream shelf, RH
126	241674401	A B C	Channel, auger mtg, LH
126	241674402	A B C	Channel, auger mtg, RH
136	240424502	A B C	Dispenser-can, clear
140	241812502	A B C	Channel, wtr tube cover
*	241935578	A B -	Energy Guide
*	241935579	- - C	Energy Guide

**CONTROLS**



**F58TEACAE1**

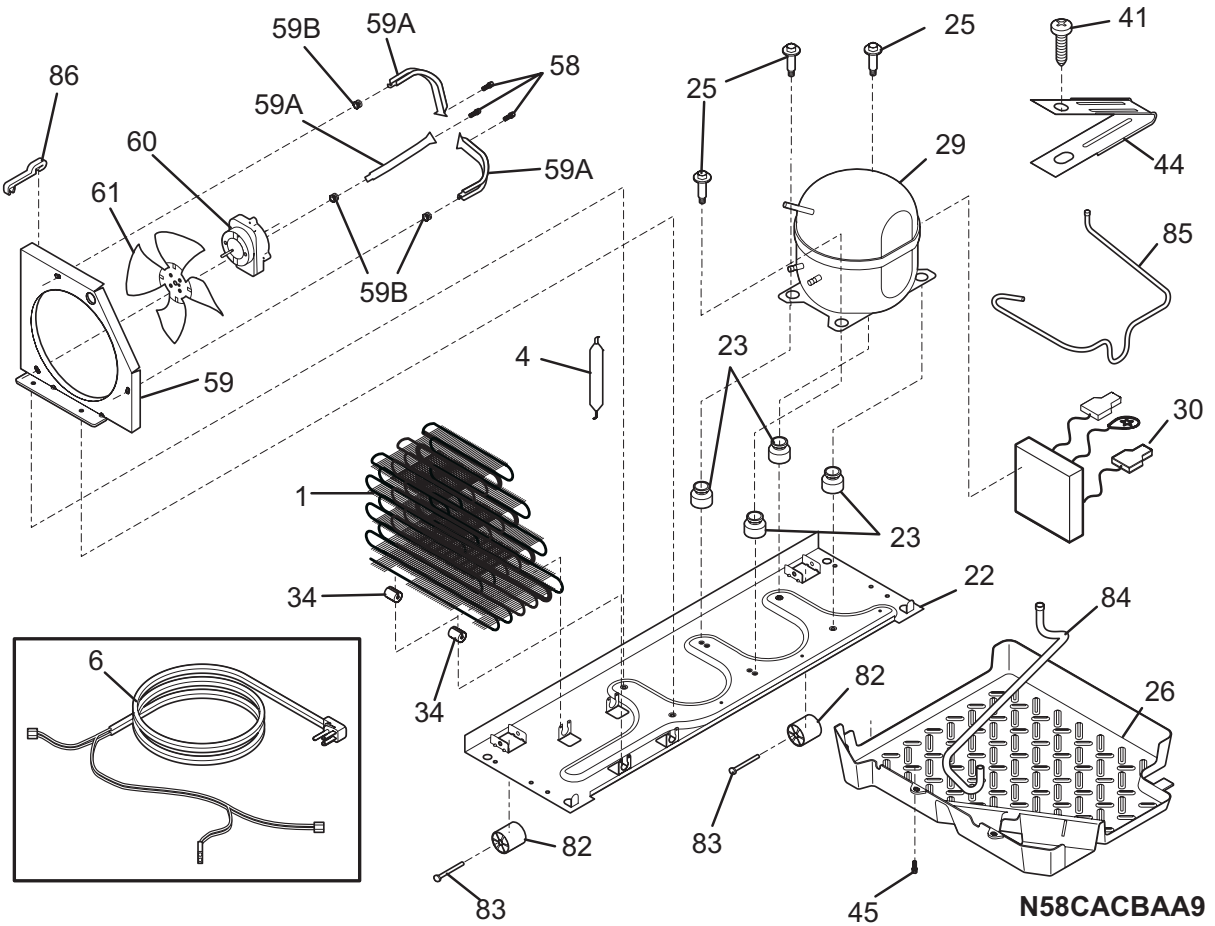
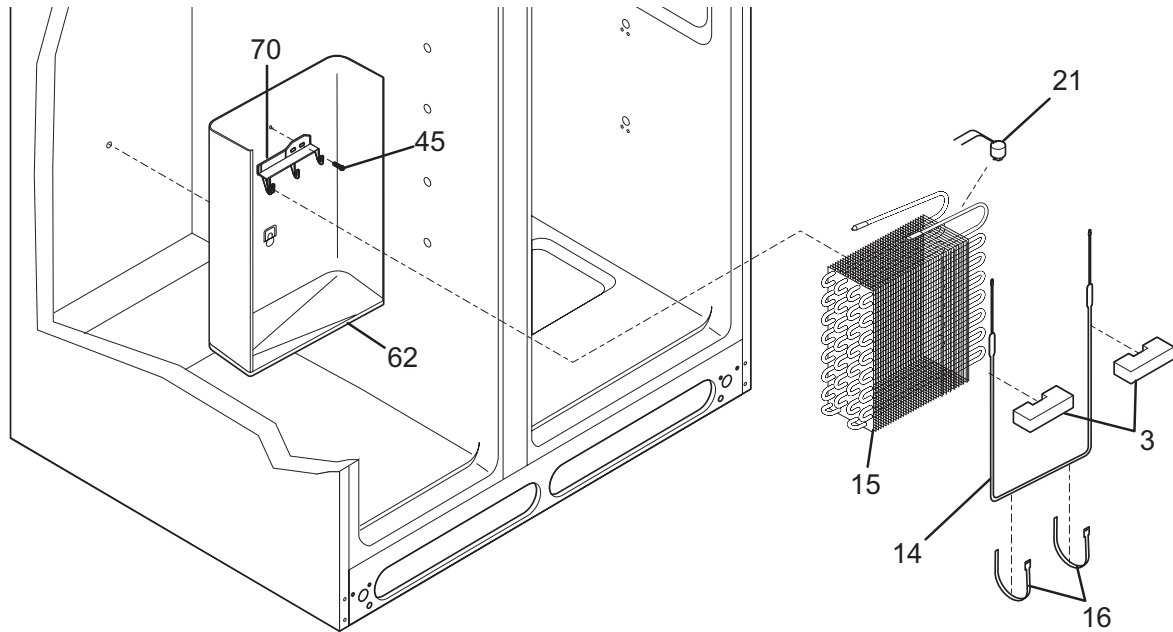
## CONTROLS

---

*Model Index:*   A FGHC2334K (FGHC2334KE1)  
                       B FGHC2334K (FGHC2334KP1)  
                       C FGHC2344K (FGHC2344KF1)

POS. NO	PART NO.		DESCRIPTION
5	5308000010	A B C	Fan Blade, red, evaporator fan
8	215474201	A B C	Washer, "slinger", nylon, evap fan shaft
9	241518301	A B C	Bushing, motor mounting
13	241509402	A B C	Motor, evaporator fan
14	241517701	A B C	Clip, evap fan motor
22	240597203	A B C	Sensor
23	241845401	A B C	Housing-sensor
50	242000413	A B C	Board-main power
50*	241867901	A B C	Harness-wiring
54	241532401	A B C	Channel
58	5304455650	A B C	Screw, hex washer head, 8-15A x 0.625, low profile
60	241755401	A B C	Diffuser-air
60*	241755501	A B C	Insulation-air duct
81	5304455658	A B C	Screw, hx wshr hd sems, 8-15A x 0.625
115	241853801	A B C	Damper Assy, w/seal
137	241791601	A B C	Filter-water, carbon
139	242009601	A B C	Base-water filter
149	241517601	A B C	Shroud-evap fan mtg
149*	241528304	A B C	Seal, foam, evap fan assy
210	241983802	A B C	Housing-water filtr
210A	241998301	A B C	Mount-water filter
*	3205266	A B C	Edge Protector, wiring harness
*	241852501	A B C	Clip, wiring harness

**SYSTEM**



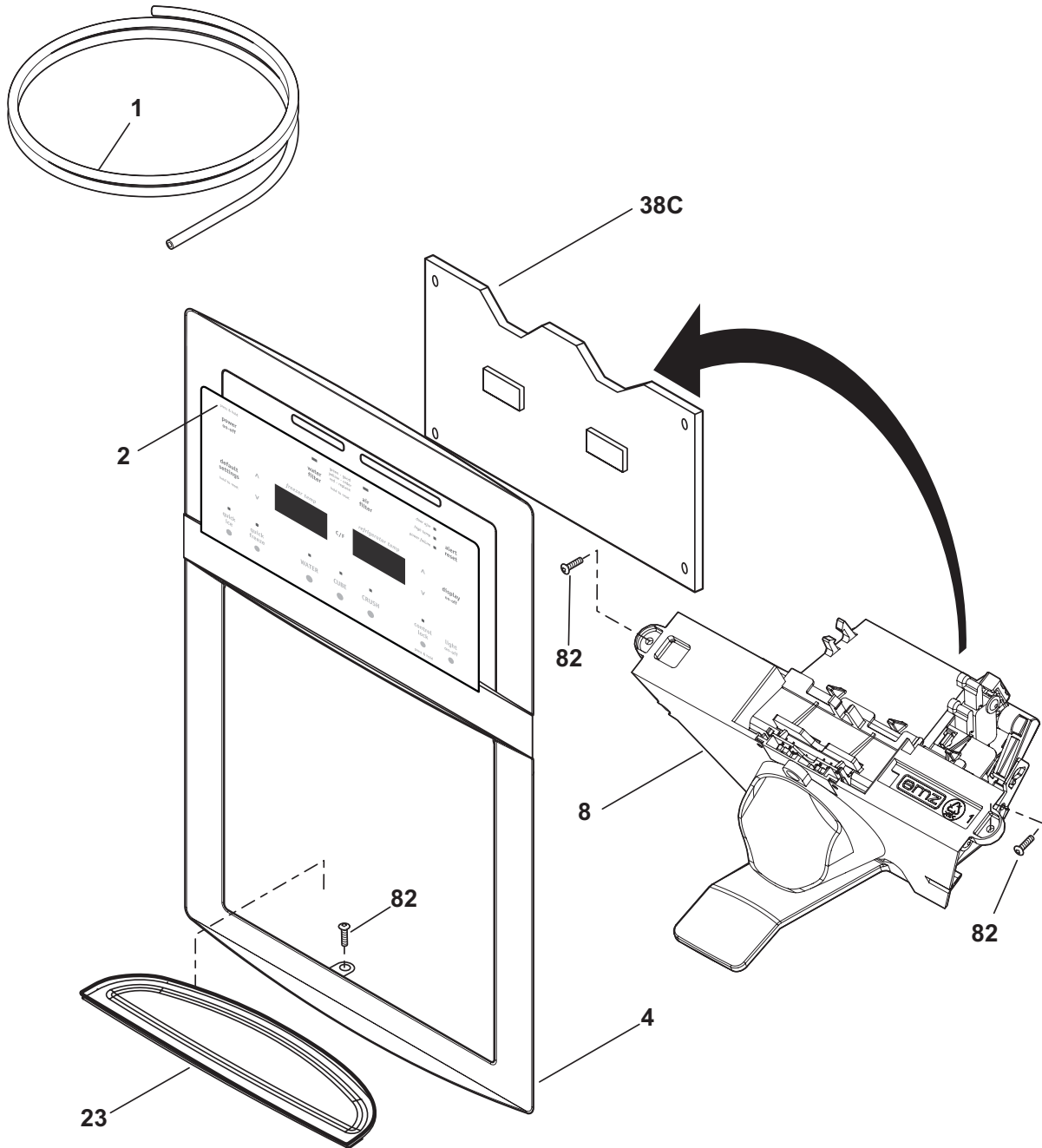
## SYSTEM

---

*Model Index:* A FGHC2334K (FGHC2334KE1)  
 B FGHC2334K (FGHC2334KP1)  
 C FGHC2344K (FGHC2344KF1)

POS. NO	PART NO.		DESCRIPTION
1	240333603	A B C	Condenser
3	218679607	A B C	Block-evap coil, styrofoam, (2)
4 #	218944001	A B C	Drier-filter, R134a System
6	241516901	A B C	Cord-service
6* #	241519902	A B C	Harness-wiring
6* #	241834902	A B C	Harness-wiring, machine compt
14 #	241940201	A B C	Heater-defrost
15 #	5303918284	A B C	Evaporator Kit
16	5308000110	A B C	Strap-evap/heater, aluminum, (2)
21	5303918214	A B C	Thermostat-defrost, kit
22	240330011	A B C	Base-compressor mtg
22*	218252201	A B C	Screw, #8 truss hd, 10-32CA x 0.500
23	218513300	A B C	Grommet-compr mtg, (4)
25	240491503	A B C	Screw-compressor mtg, 1/4-28 x 1.16, (4)
26	241697501	A B C	Pan-defrost drain
29 #	5303918396	A B C	Compressor Kit
30 #	241577505	A B C	Inverter
34	240405201	A B C	Grommet, rubber, black, cond tube/wire
41	240555002	A B C	Screw-#8-32 X 3/8
44	215174700	A B C	Clamp-service cord, strain relief, galv steel
45	5304455650	A B C	Screw, hex washer head, 8-15A x 0.625, low profile
58	240569201	A B C	Screw, 8-18 x 0.500
59	240315506	A B C	Shroud, cond fan motor
59*	240346701	A B C	Tape-foam seal, shroud
59*	240359403	A B C	Screw-fan shroud, (2)
59A	240346501	A B C	Bracket-support, cond mtr, (3)
59B	240346601	A B C	Grommet-bracket, (3)
60	241584301	A B C	Motor-condenser fan
61	241639501	A B C	Blade-condenser fan
62	240429402	A B C	Trough-drain
70	218990801	A B C	Bracket-evap/cvr mtg
82	5304418225	A B C	Roller, compressor base, rear, (2)
83	5304455655	A B C	Rivet, flat head, 1/4 OD x 1-3/4, roller pin
84	241957901	A B C	Tube-drain, lower
85	241846302	A B C	Tube-suction, jumper
86	240409302	A B C	Spacer-cond tube, black
*	5303918222	A B C	Hot Tube Repair Kit, service
* #	5303918327	A B C	Heat Exchanger Kit, suction line

ICE & WATER DISPENSER



F58XFCAAA0

---

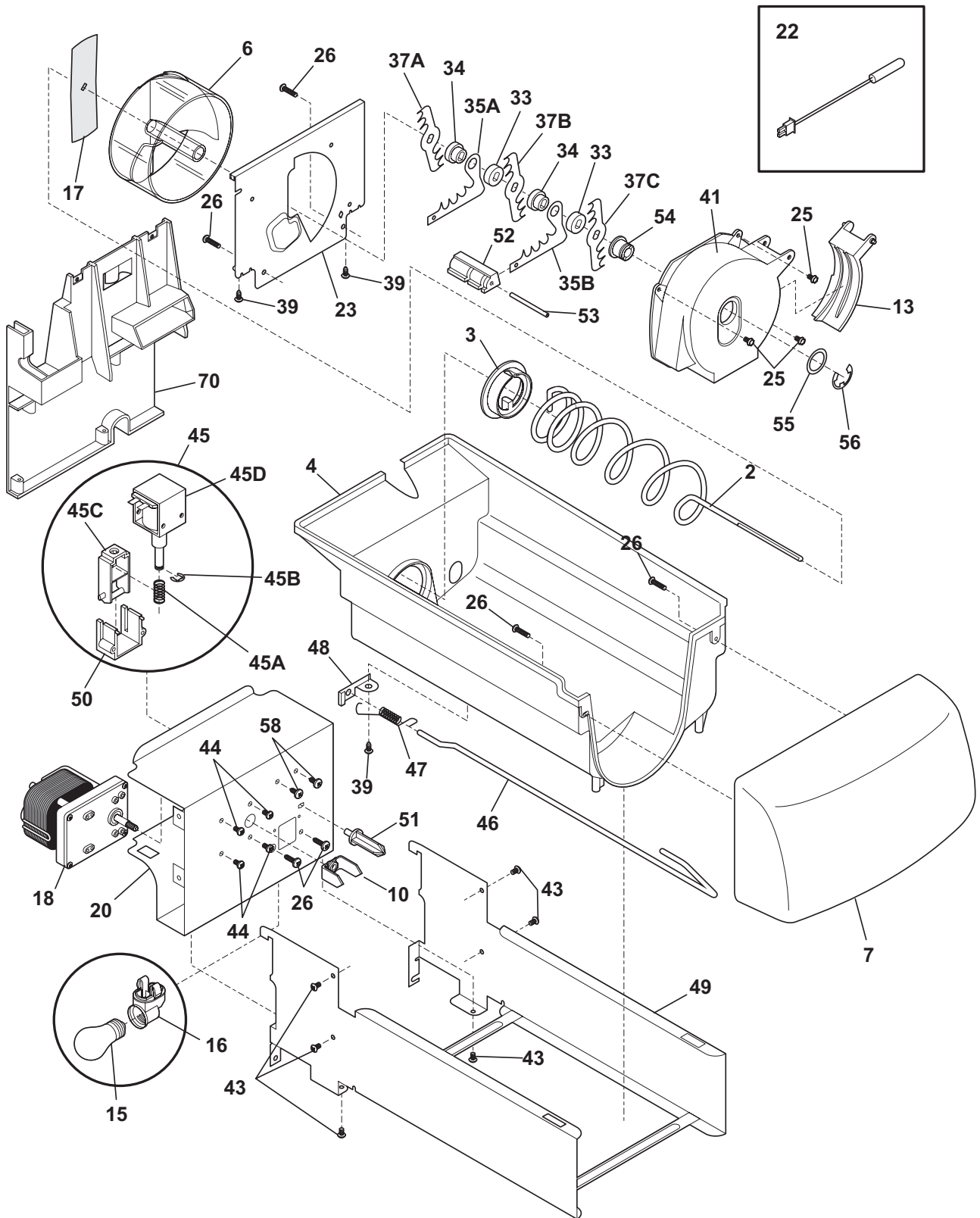
**ICE & WATER DISPENSER**


---

*Model Index:* A FGHC2334K (FGHC2334KE1)  
 B FGHC2334K (FGHC2334KP1)  
 C FGHC2344K (FGHC2344KF1)

POS. NO	PART NO.		DESCRIPTION
1	218976421	A B C	Tube-water inlet, valve to door
1*	218976429	A B C	Tube-water inlet, 97.50", brown/tan
1*	218976915	A B C	Tube-water inlet, inlet valve, to filter
1*	240561702	A B C	Seal-water inlet, inlet valve, to ice maker
2	241973804	A - C	Switch Assembly, overlay, black
2	241973805	- B -	Switch Assembly, overlay, white
4	241946808	A - -	Cover-module, black
4	241946806	- B -	Cover-module, white
4	241946809	- - C	Cover-module
8	241753413	A B C	Module-dispenser, clear
23	241947003	A - -	Drip Tray, black
23	241947001	- B -	Drip Tray, white
23	241947006	- - C	Drip Tray
38C#	241973702	A B C	Board-control
82	240363402	A B C	Screw-#8-18 X 1/2, #6 hd plask
*	5303918371	A B C	Dispenser heater kit, 115

ICE CONTAINER



N58YDAAAC5

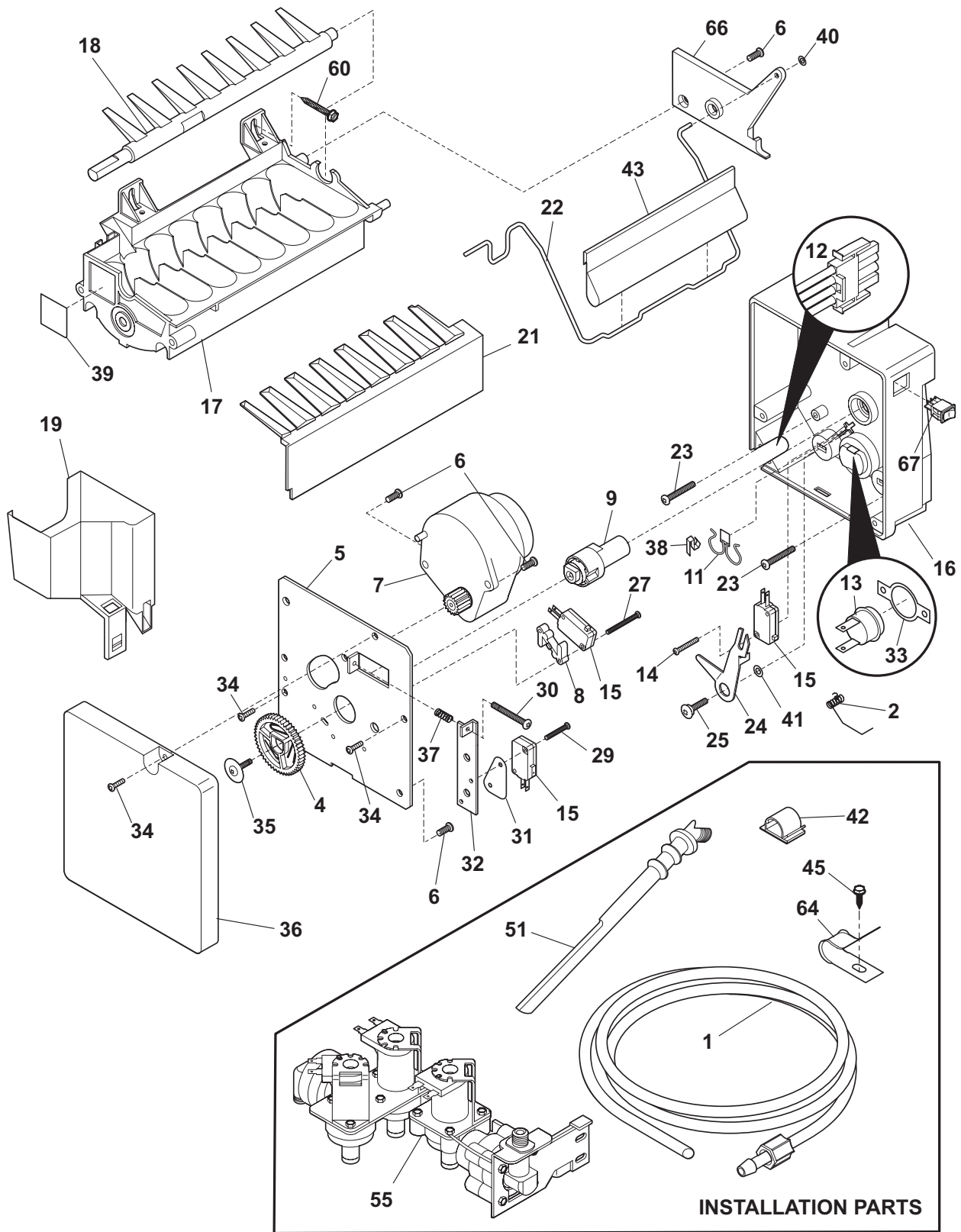


## ICE CONTAINER

Model Index: A FGHC2334K (FGHC2334KE1)  
 B FGHC2334K (FGHC2334KP1)  
 C FGHC2344K (FGHC2344KF1)

POS. NO	PART NO.		DESCRIPTION
2	241684701	A B C	Auger-ice
3	241685201	A B C	Cam-drive
4	241515202	A B C	Container-ice, bucket only
6	241685101	A B C	Drum-ice disp
7	241515302	A B C	Front-ice container
10	241726501	A B C	Bar-drive
13	241685301	A B C	Gate
15	241555401	A B C	Light Bulb
16	241559801	A B C	Socket-light
17	241684501	A B C	Drive Blade
18 #	241676201	A B C	Motor-auger
18*	241522901	A B C	Harness-wiring, icmkr/container
20	241675502	A B C	Cover-motor
22	240597203	A B C	Sensor
22*	241519401	A B C	Clip, sensor
23	241684001	A B C	Plate-front
25	241690701	A B C	Screw, hex washer head, 8-32T x 0.375
26	215503203	A B C	Screw, cr pan hd, 10-16 x 0.500
33	241684801	A B C	Spacer
34	241689801	A B C	Spacer
35A	241684301	A B C	Fixed Blade, round
35B	241684201	A B C	Fixed Blade, square
37A	241684101	A B C	Blade, crusher #1
37B	241684102	A B C	Blade, crusher #2
37C	241684103	A B C	Blade, crusher #3
39	241690501	A B C	Screw
41	241685601	A B C	Housing-crusher
43	215005101	A B C	Screw, hanger/rlr mtg, 8-10 x 7/16
44	241842101	A B C	Screw, 8-32 x 1/4
45 #	241675701	A B C	Solenoid Assy, 115V
45A	241675901	A B C	Spring-solenoid
45B	241676001	A B C	E-Ring-solenoid
45C	241676101	A B C	Actuator-solenoid
45D#	241675801	A B C	Solenoid, 115V
46	241684402	A B C	Control Rod
47	241731801	A B C	Spring-control rod
48	241684602	A B C	Bracket-control rod
49	241676501	A B C	Rail Assy
50	241675601	A B C	Guide-solenoid
51	241676301	A B C	Rotation Stop
52	241684901	A B C	Spacer-fixed blades
53	241690402	A B C	Pin-spiral, fixed blades
54	241685001	A B C	Nut-auger
55	241690306	A B C	Washer
56	241690201	A B C	E-ring
58	218359202	A B C	Screw, pan head, 8-32 x 0.250
70	241504601	A B C	Plate-mounting
70*	241551602	A B C	Screw, hex head, 8-18B x 0.875
70*	241716801	A B C	Clip
*	240562101	A B C	Insulator
*	241914703	A B C	Ice Container Assy, w/moving parts

ICE MAKER



N581115TServo

## ICE MAKER

Model Index: A FGHC2334K (FGHC2334KE1)  
 B FGHC2334K (FGHC2334KP1)  
 C FGHC2344K (FGHC2344KF1)

POS. NO	PART NO.		DESCRIPTION
1	218976421	A B C	Tube-water inlet, valve to door
1*	218976429	A B C	Tube-water inlet, 97.50", brown/tan
1*	218976915	A B C	Tube-water inlet, inlet valve, to filter
1*	240561702	A B C	Seal-water inlet, inlet valve, to ice maker
2	5304459922	A B C	Spring, shut-off arm
4	5304458380	A B C	Gear
5	5304458383	A B C	Plate-mounting
6	5304458386	A B C	Screw
7 #	5304458382	A B C	Motor-ice maker Svo
8	5304458388	A B C	Spacer-hold switch
9	5304456662	A B C	Cam
11 #	5304458400	A B C	Thermal Cutoff, ice maker
12	5304458379	A B C	Harness-wiring
13	5304456665	A B C	Thermostat, ice maker
14	5304458384	A B C	Screw
15 #	5304456667	A B C	Switch-micro, (3)
16	5304458395	A B C	Housing, control
17	5304456669	A B C	Mold-ice maker, w/therm cut off
18	5304458377	A B C	Ejector-ice
18*	241522901	A B C	Harness-wiring, icmkr/container
18*#	240352601	A B C	Wiring Harness, internal, with plug
19	5304458378	A B C	Cup-water inlet
21	5304458390	A B C	Ice Stripper
22	5304458375	A B C	Shut-off Arm
23	5304458394	A B C	Screw
24	5304458391	A B C	Lever Arm
25	5304456676	A B C	Screw, M 4x12.8 #2, lever arm/sprt
27	5304458385	A B C	Screw
29	5304458393	A B C	Screw
30	5304458387	A B C	Screw
31	5304458381	A B C	Insulator
32	5304456681	A B C	Plate-valve switch
33	5304458403	A B C	Retainer-thermostat
34	5304456678	A B C	Screw, M 3x12 #3, (2)
35	5304456684	A B C	Screw
36	5304458376	A B C	Cover-ice maker
37	5304456682	A B C	Spring, timing adjust
38	5304458398	A B C	Clip
39	5304458399	A B C	Conductor-heat
40	5304458401	A B C	Clip-retainer
41	5304456689	A B C	Washer, nylon
42	218515403	A B C	Clip-grille
43	241720601	A B C	Extension
45	5304455650	A B C	Screw, hex washer head, 8-15A x 0.625, low profile
51	241796402	A B C	Tube-water fill, extension
55 #	241734301	A B C	Valve-water, triple solenoid
55*	218709101	A B C	Screw, hex head, 10-32 x 0.500
55*	240363602	A B C	Screw-shoulder



---

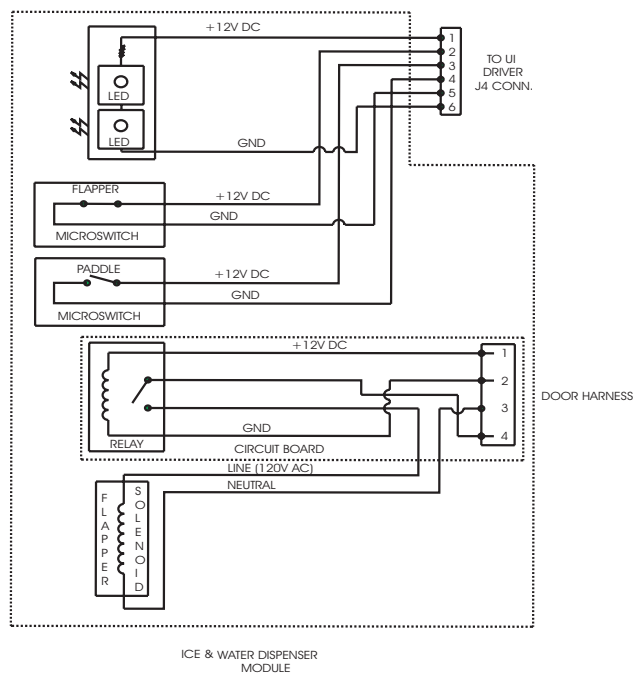
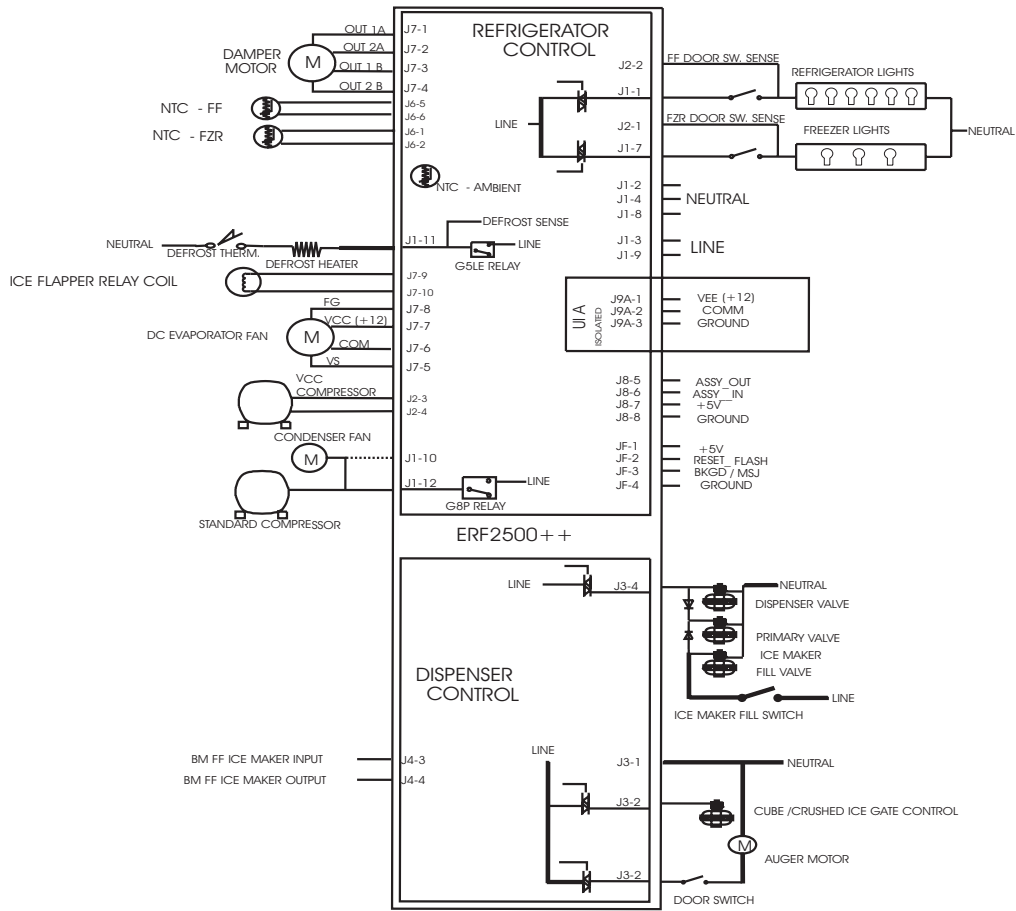
**ICE MAKER**


---

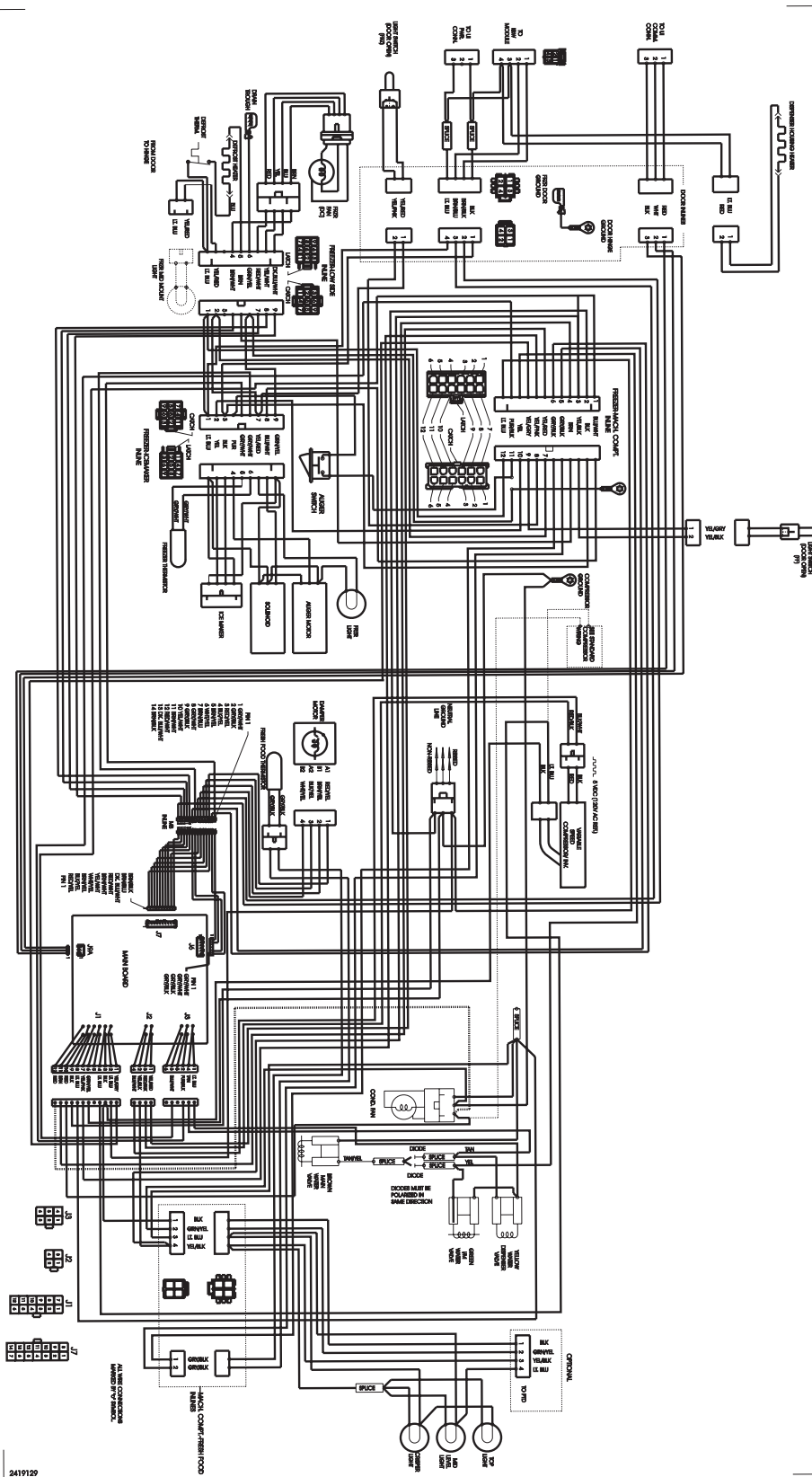
*Model Index:* A FGHC2334K (FGHC2334KE1)  
 B FGHC2334K (FGHC2334KP1)  
 C FGHC2344K (FGHC2344KF1)

POS. NO	PART NO.		DESCRIPTION
55*	240542901	A B C	Cap-water valve
60	5304455651	A B C	Screw, hex washer head, 8-15A x 0.500
64	5304455846	A B C	Clamp, .31 ID, steel, water tube
66	5304458374	A B C	Bracket-ice maker
67	5304458392	A B C	Switch-on/off
*	240352102	A B C	Connector-water, straight
*	241583301	A B C	Deflector-air, ice maker
*	5304456660	A B C	Screw, M 4x6 #2
*	5304458389	A B C	Screw
* #	241709801	A B C	Ice Maker, radius cube, 115 V, no instl parts

**WIRING SCHEMATIC**



WIRING DIAGRAM



2419129