

Frigidaire

Factory Parts Catalog

Product No.	FAS226R2A11	FAS226R2A12	FAS226R2A13
Series	heavy duty	heavy duty	heavy duty
Color	white	white	white
Volts	230/208	230/208	230/208
BTU-Cooling	22000	22000	22000
Owner's Guide	66129901148en	66129901148en	66129901148en
Installation Instructions	66129901164	66129901164	66129901164
Energy Guide	62229902580	62229902580	62229902580
Market	North America	North America	North America

 **Electrolux**

Electrolux Major Appliances
North & Latin America
P.O. BOX 212378
AUGUSTA, GA 30917

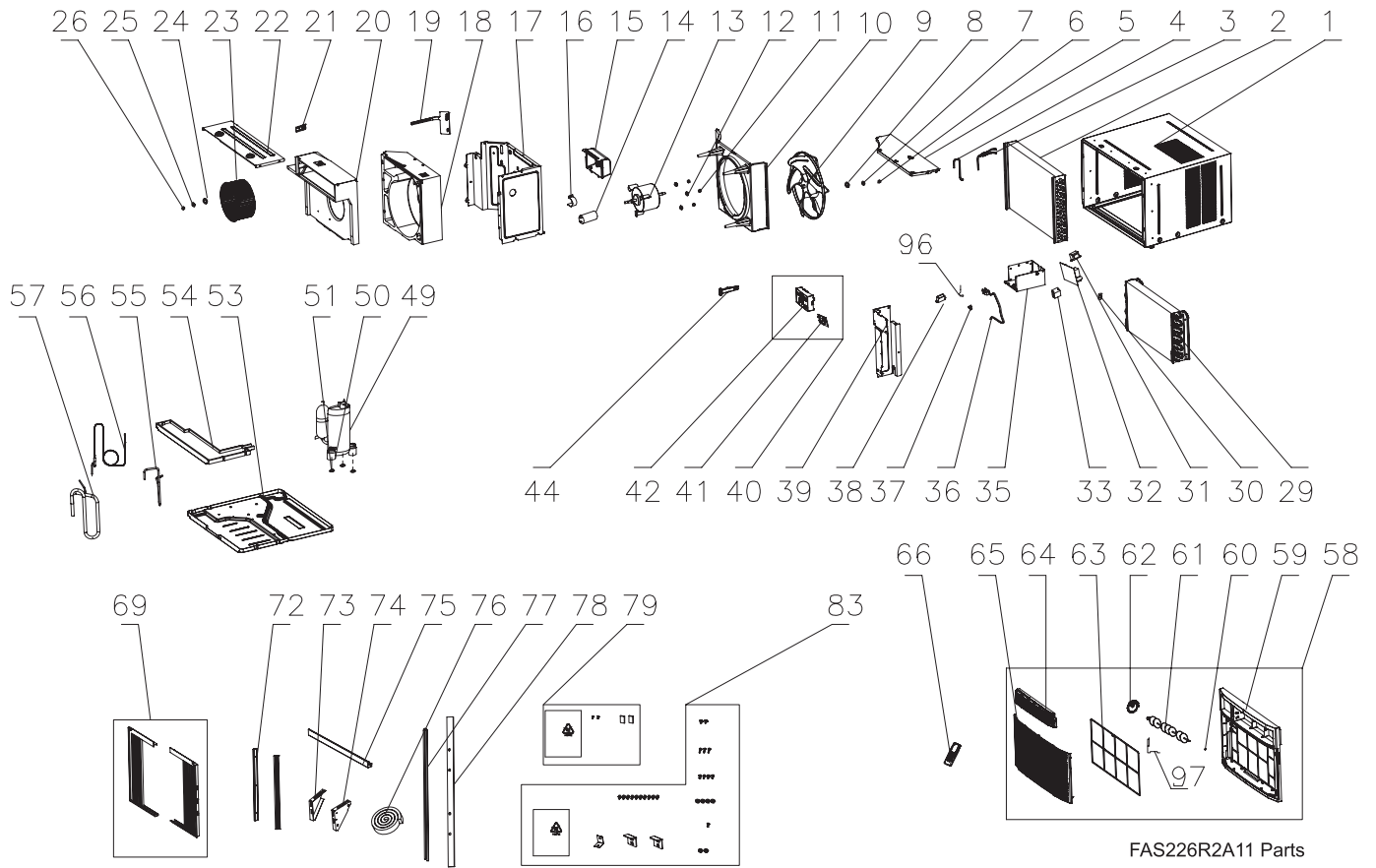
Publication No.
5995514188
08/05/13
(EN/SERVICE/KC)
099

**ROOM AIR
CONDITIONER**

**Model No.
FAS226R2**

Copyright © 2008 Electrolux Home Products, Inc.
All rights reserved.

RECOMMENDED SPARE PARTS

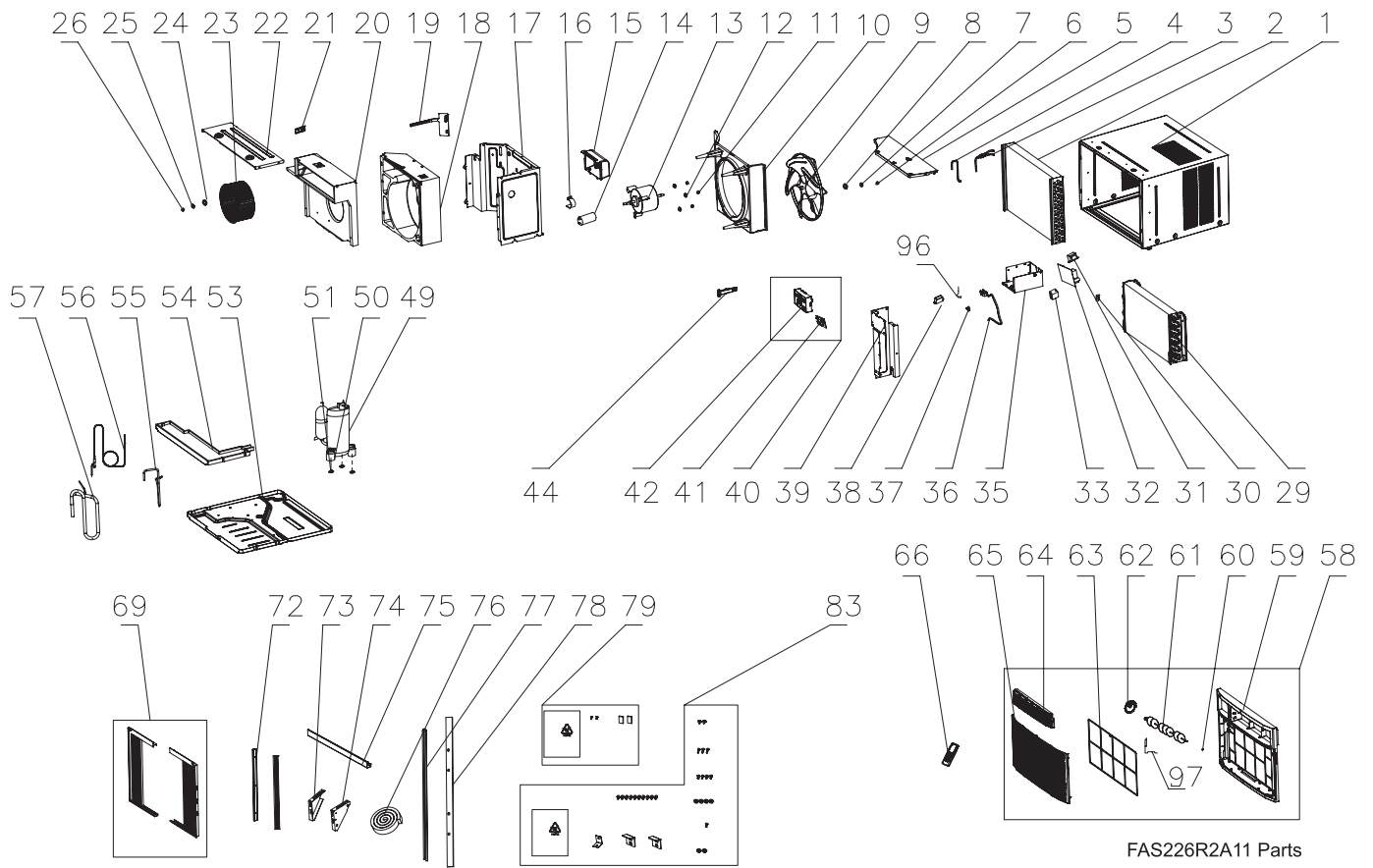


RECOMMENDED SPARE PARTS

Model Index: A FAS226R2 (FAS226R2A11)
 B FAS226R2 (FAS226R2A12)
 C FAS226R2 (FAS226R2A13)

POS. NO	PART NO.		DESCRIPTION
1	5304459566	A B C	Cabinet, wrapper/sleeve
2 #	5304459567	A B C	Condenser
3 #	5304459568	A B C	Tube, inlet, condenser
4 #	5304459569	A B C	Tube, outlet, condenser
5	5304459571	A B C	Cover, condenser/fan, top
6	5304459169	A B C	Nut, M8
7	5304459170	A B C	Washer, #8
8	5304459171	A B C	Washer, #8
9 #	5304459172	A B C	Fan Blade, propeller
10	5304459572	A B C	Shroud, condenser fan
11	5304459175	A B C	Nut, M6
12	5304459176	A B C	Washer, #6
13 #	5304467466	A - -	Motor, fan
13 #	5304467473	- B -	Motor, fan
13 #	5304467474	- - C	Motor, fan
14 #	5304463525	A B C	Capacitor, motor
15	5304459178	A B C	Cover, capacitor box
16	5304459182	A B C	Strap, capacitor clamp
17	5304459576	A B C	Bulkhead, air system
18	5304459577	A B C	Scroll, blower housing, rear
19	5304459578	A B C	Door, fresh air vent, with lever
20	5304459579	A B C	Scroll, blower housing, front
21	5304459192	A B C	Link, lever/vent door
22	5304459581	A B C	Cover, top plate, blower scroll
23 #	5304459187	A B C	Blower Wheel, centrifugal fan
24	5304459188	A B C	Washer, #10
25	5304459189	A B C	Washer, #10
26	5304459190	A B C	Nut, M10
29 #	5304459583	A B C	Evaporator
30	5304460030	A B C	Clip, sensor support
31 #	5304459196	A B C	Transformer
32 #	5304467468	A B C	PC Board, control, main
33 #	5304459234	A B C	Relay
35	5304459586	A B C	Control Box
36 #	5304459590	A B C	Power Cord, electric, LCDI
37	5304459237	A B C	Clamp, wiring
38 #	5304459439	A B C	Ionizer, clean air
39	5304459593	A B C	Bulkhead, control system
40 #	5304467469	A B C	Control Panel Assembly, console
41 #	5304467470	A B C	PC Board, display/input
42	5304467471	A B C	Control Panel, display console
44	5304459244	A B C	Handle, vent control
49 #	5304459611	A B C	Compressor, with overload
50	5304459615	A B C	Grommet, compressor
51	5304459256	A B C	Nut, compressor, M8, w/washer
53	5304459617	A B C	Base, unit chassis
54	5304459621	A B C	Tray, drip pan, foam
55 #	5304459622	A B C	Tube, discharge

RECOMMENDED SPARE PARTS

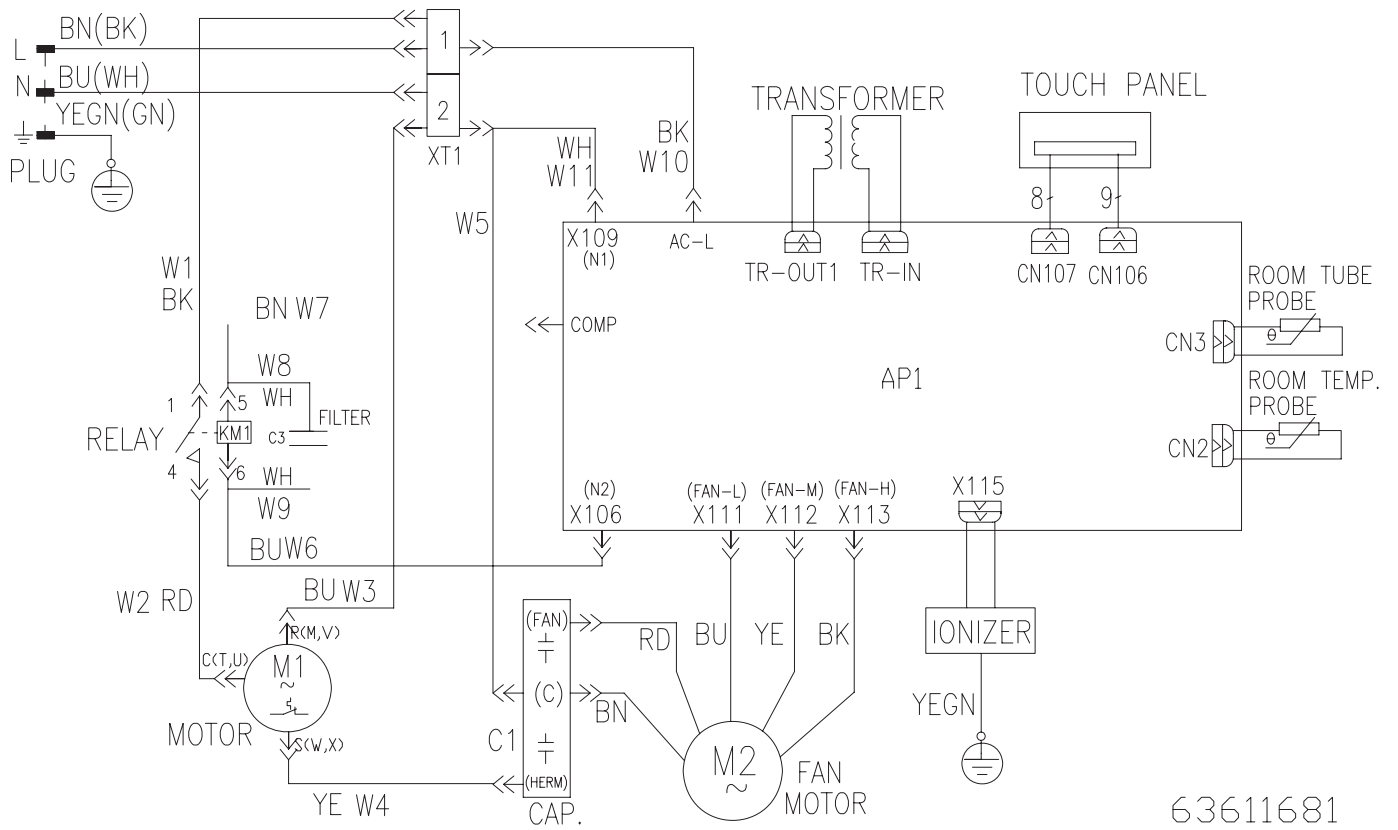


RECOMMENDED SPARE PARTS

Model Index: A FAS226R2 (FAS226R2A11)
 B FAS226R2 (FAS226R2A12)
 C FAS226R2 (FAS226R2A13)

POS. NO	PART NO.		DESCRIPTION
56 #	5304459624	A B C	Tube, capillary
57 #	5304467501	A B C	Tube, suction
58 #	5304459631	A B C	Front Assembly, complete panel
59	5304459633	A B C	Panel, frame, front
60	5304459272	A B C	Gasket, vertical louver, rubber
61 #	5304459635	A B C	Louver, vertical
62	5304459636	A B C	Knob, auger wheel, louver
63 #	5304459637	A B C	Filter, air
64 #	5304459638	A B C	Louver, horizontal
65	5304459640	A B C	Panel, front grille, tilt-out
66 #	5304465400	A B C	Remote Control, transmitter
69	5304462391	A B C	Window Filler Kit, slider panels
72	5304459645	A B C	Retainer, shutter, cabinet sides
73	5304459537	A B C	Bracket, support, left, angle
74	5304459538	A B C	Bracket, support, right, angle
75	5304459646	A B C	Rail, shutter track, top
76	5304459559	A B C	Seal, sash, window stuffer
77	5304459560	A B C	Seal, bottom rail, cab/chassis
78	5304459647	A B C	Seal, top rail, cabinet
79	5304459772	A B C	Kit, shutter lock, screw/washers
83	5304459562	A B C	Hardware Kit, installation
96 #	5304459875	A B C	Thermistor, evap sensor, defrost
97 #	5304459876	A B C	Thermistor, temp sensor, ambient

WIRING DIAGRAM



63611681