

MRF67SSTB

45.5" x 23.75" x 23.5" (H x W x D)

Stainless steel refrigerator-freezer-microwave combination with deluxe CT67SSTB

Highlights:

Combination refrigerator-freezer-microwave serves all your kitchen needs in a slim 24 inch wide fit

Stainless steel door and microwave construction brings durable luxury to any setting

Electrical allocator box protects unit from circuit breaks by limiting power usage to 10 amps

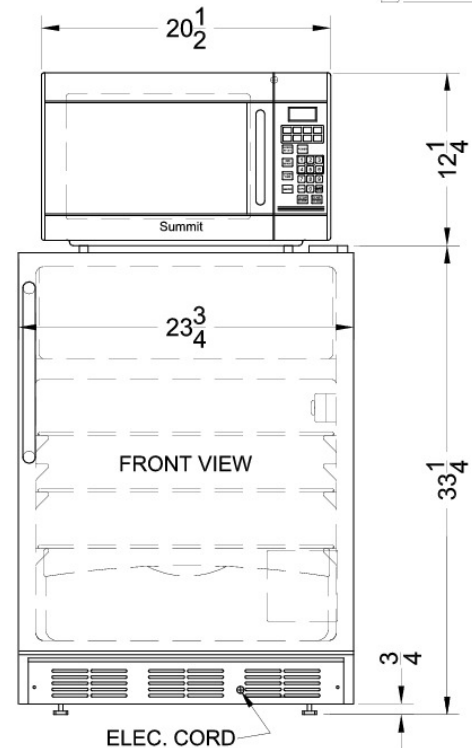
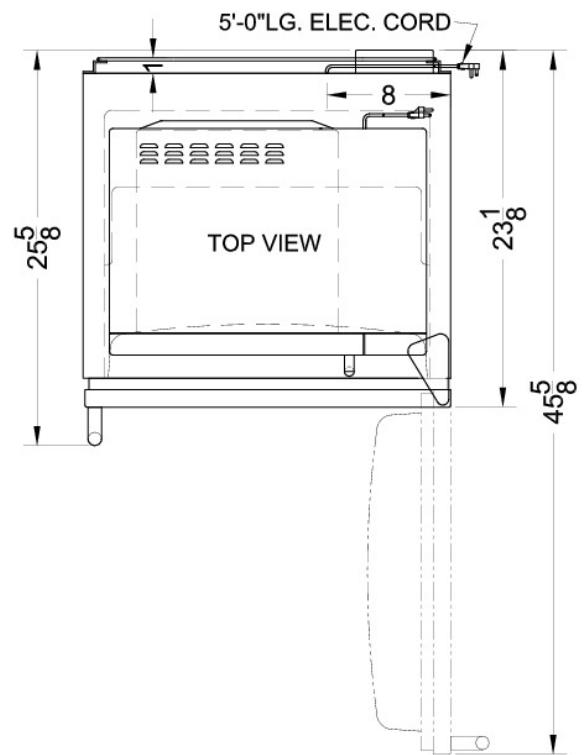
Ships fully assembled



| | |
|--|---|
| Thin-line design | Limited space is no problem for our thin-line models, designed specifically for those hard-to-fit spots |
| CT67SSTB Refrigerator-freezer | Deluxe refrigerator-freezer with glass shelves, door racks, and crisper |
| Zero degree freezer | Keep ice cream frozen and freezer burn-free in a freezer that reaches and maintains zero degrees |
| Stainless steel door on refrigerator-freezer | Elegant design that's easy to clean |
| Professional towel bar handle | A curved stainless steel handle provides more room for a comfortable grip on the refrigerator-freezer door |
| Stainless steel SCM852 Microwave oven | Touchpad mid-sized microwave with one-touch cook options and variable controls |
| Allocator box | Plug the refrigerator-freezer, microwave, and a third appliance into this allocator box for safe operation that limits total power consumption to 10 amps |
| Ships fully assembled in one box | No assembly required before use |

Specifications:

| | |
|-----------------------------|----------------|
| Height | 45.5" |
| Width | 23.75" |
| Depth | 23.5" |
| Capacity | 5.1 cu.ft. |
| Interior Height 1 | 19.5" |
| Interior Width 1 | 20.5" |
| Interior Depth 1 | 17.0" |
| Interior Height 2 | 5.0" |
| Interior Width 2 | 19.0" |
| Interior Depth 2 | 11.5" |
| Comp Step Height | 7.0" |
| Comp Step Width | 20.5" |
| Comp Step Depth | 5.0" |
| Shipping Weight | 165.0 lbs. |
| US Electrical Safety | UL |
| Wattage | 1000.0 watts |
| Voltage/Frequency | 115 V AC/60 Hz |
| Canadian Electrical Safety | ULC |
| Crisper Quantity | 1 |
| Shelf Quantity | 3 |
| Adjustable Shelf | true |
| Shelf Type | Glass |
| Crisper Cover Type | Glass |
| Crisper Finish | Transparent |
| Full Door Shelf Quantity | 3 |
| Depth with door at 90° | 45.63" |
| Defrost Type | Cycle |
| Specialized Cooking Buttons | true |
| Digital Display | true |
| Control Pad Type | Digital |
| Thermostat Type | Dial |
| Fan Type | Exterior |
| Condensor Location | Rear of Unit |
| Microwave Rack | true |
| Light | true |
| Level Legs Quantity | 4 |
| Freon Type | R134a |
| Low Side PSI | 70.0 |
| Freon Oz | 2.6 |
| High Side PSI | 285.0 |
| Parts/Labor Warranty | 1 Year |



Summit Appliances Division, Felix Storch, Inc.
 770 Garrison Ave • Bronx, NY 10474
 Phone: 718-893-3900 • Fax: 718-842-3093
 Email: info@summitappliance.com