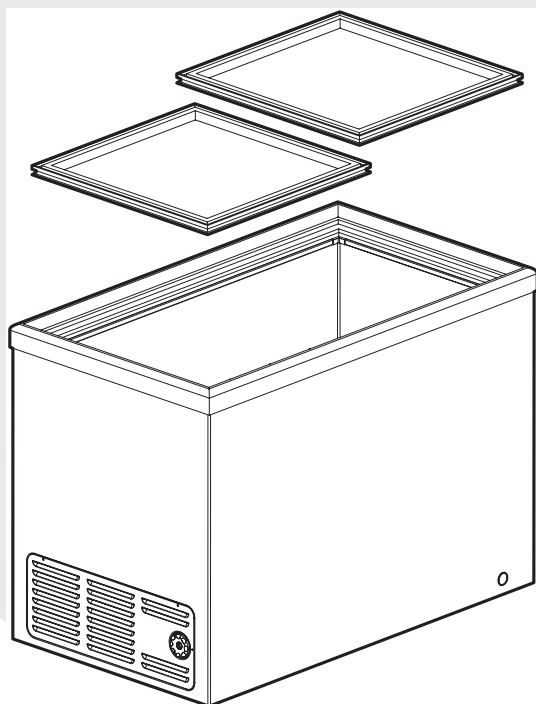


# *Frigidaire*

## Factory Parts Catalog



Product No.	FCCG151FW0
Series	Commercial
Color	white
Volts	115
Owner's Guide	297068500
Market	North America

 **Electrolux**

Electrolux Major Appliances  
North & Latin America  
P.O. BOX 212378  
AUGUSTA, GA 30917

Publication No.  
**5995459798**  
06/01/30  
(EN/SERVICE/MLR)  
365

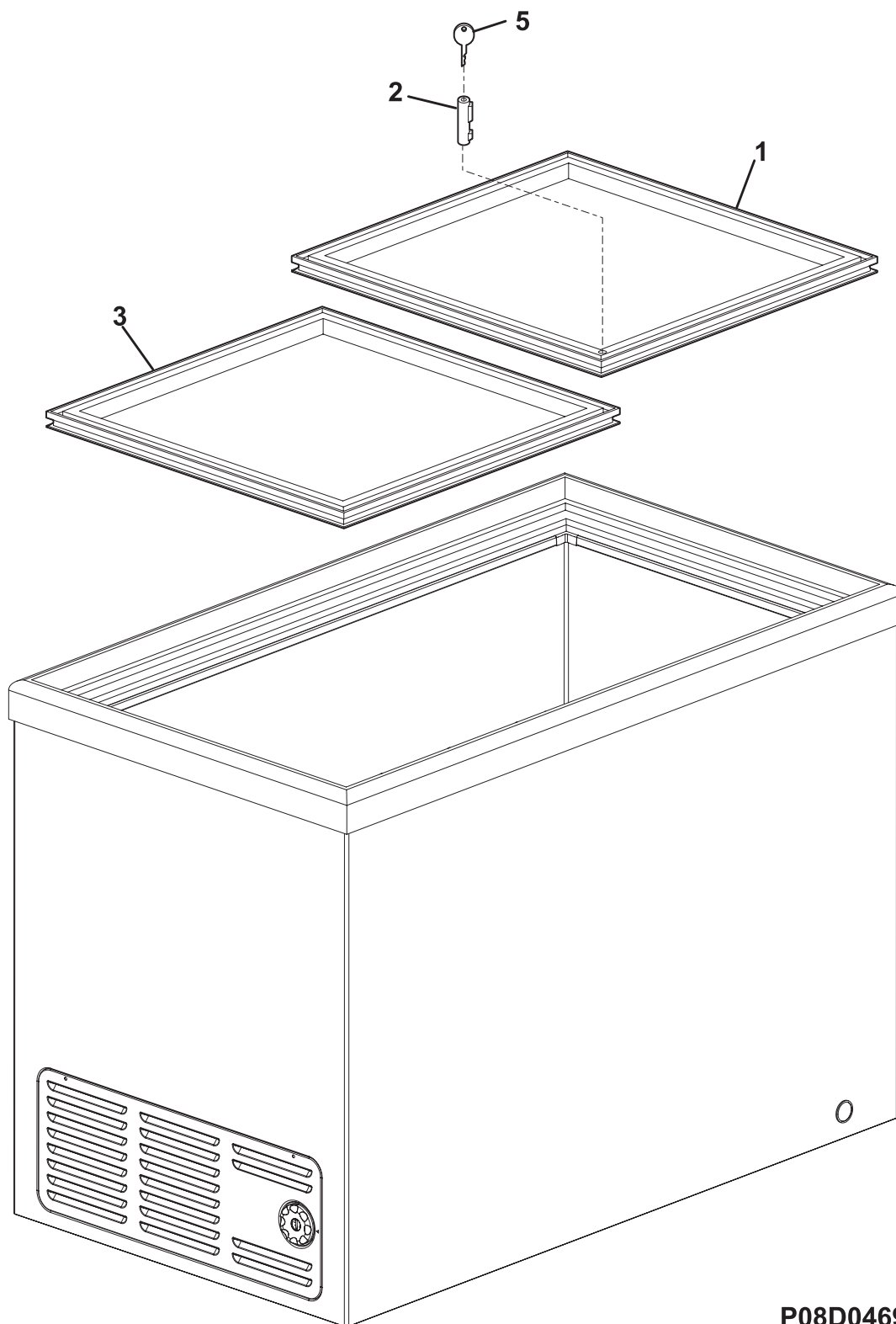
**FREEZER CHEST**

Model No.  
**FCCG151FW**

Copyright © 2006 Electrolux Home Products, Inc.  
All rights reserved.

**DOOR**

---



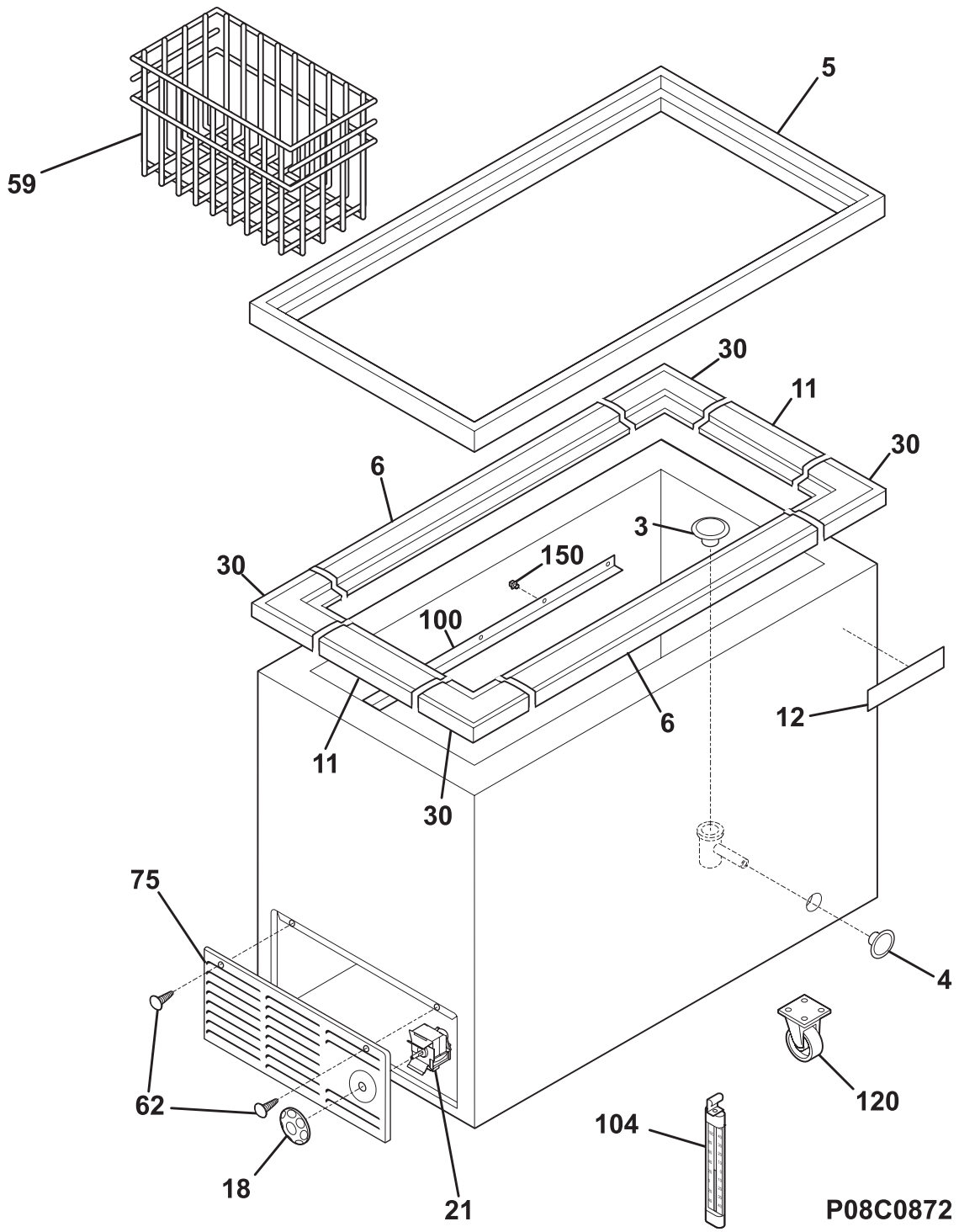
**P08D0469**

**DOOR**

---

POS. NO	PART NO.	DESCRIPTION
1	216620615	Lid, chest freezer, glass, upper
2	216621200	Lock Assy, frzr lid
3	216620715	Lid, chest freezer, glass, lower
5	216621300	Key, frzr lid lock

**CABINET**

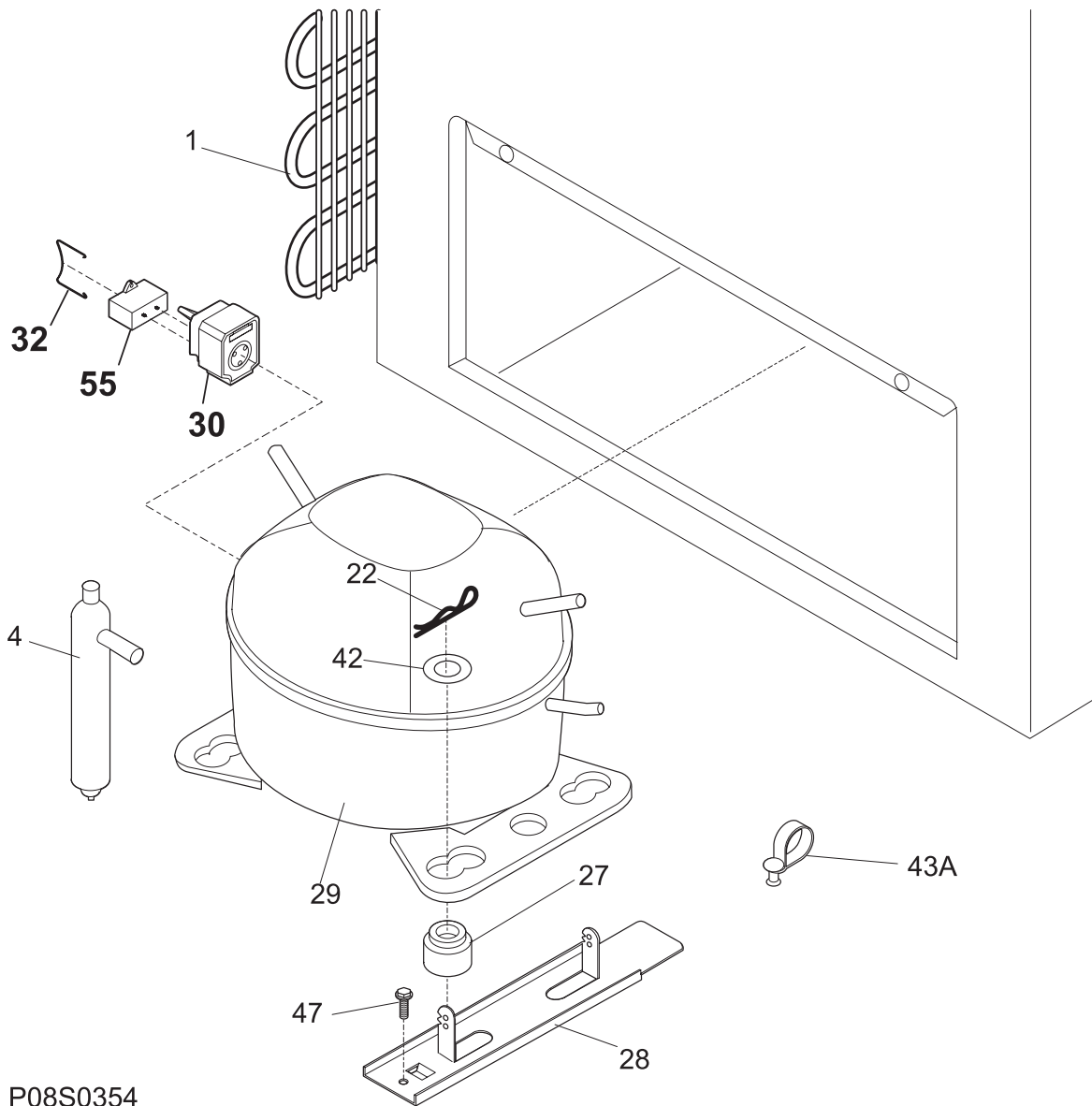
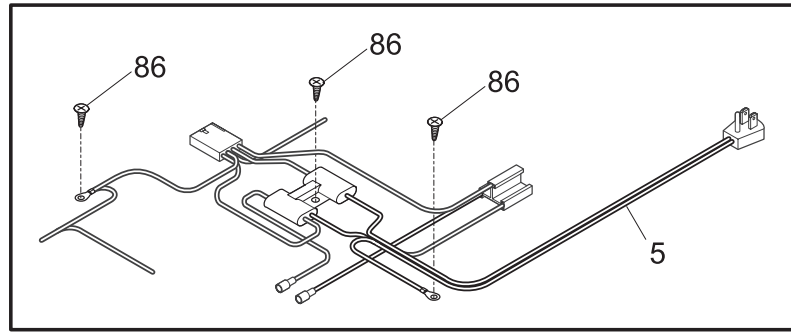


### CABINET

---

POS. NO	PART NO.	DESCRIPTION
3	216502600	Plug, drain, interior
4	297013600	Plug, drain, exterior
5	216620515	Frame, outer
6	216955505	Breaker, hinge side
11	216955500	Breaker, chest end, (2)
12	297073400	Nameplate, Commercial, stainless
18	216707201	Knob, temp control
21#	216714601	Control temperature
30	216110700	Breaker, corners
59	216506100	Basket, chest freezer, (2)
62	131420300	Screw, cr truss head, 8-18AB x 0.750
75	216034301	Panel, access, white
100	216995208	Track-basket
104	297070100	Thermometer
120	216621000	Caster
150	216997400	Support, track-basket
*	216649700	CASTER PACK, 4 casters, wrench, 16 screws
*	297001703	Insulation, 6", drain tube
*	5303305324	Paint, touch-up, white

**SYSTEM**



P08S0354

---

**SYSTEM**


---

POS. NO	PART NO.	DESCRIPTION
1	5303925238	Condenser
4 #	216938600	Drier-filter
5 #	216987200	Harness-main
22	216056400	Clip, compressor mtg, SPRING
27	5308002681	Grommet, compressor
28	5303212615	Support, compressor
29 #	297048200	Compressor, w/o electricals
30 #	297048300	Controller
32	241544101	Clamp, elec cont mtg, compressor, bale wire
42	216232700	Washer, flat, 1"OD x 0.531"ID
43A	5303212614	Clip, harness mount
47	216629600	Screw, hex washer head, 10-16 x 0.500, tapping
55 #	216236200	Capacitor-run, 180-200 VAC, 15 microfarad
86	216036600	Screw, ph washer head, 8-32CA x 0.500, thread forming
*	5303298960	Spacer-tube, 0.237" ID