
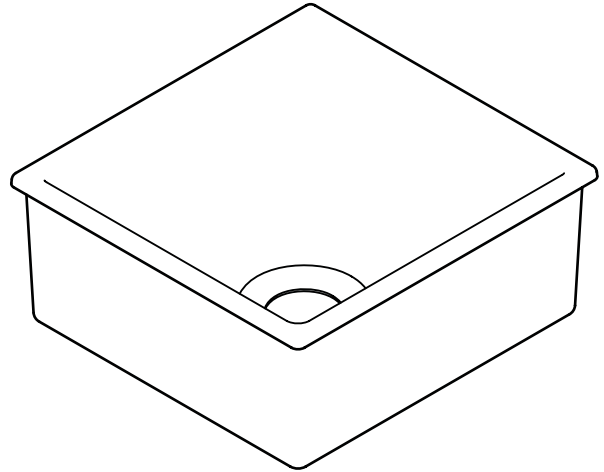
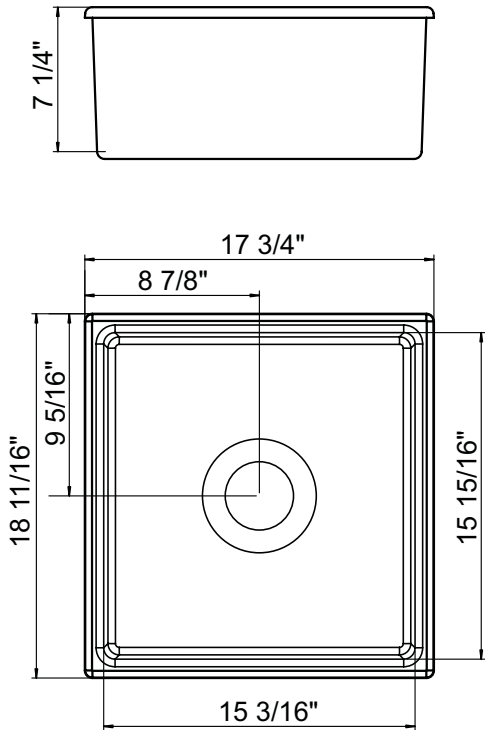


- Self-rimming or undermount
- Durable ceramic
- Gloss finish
- Limited lifetime owner warranty
- Includes strainer basket and drain kit (3 1/2")
-  Accessories included (see below)

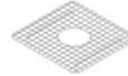


MODEL NO.	OVERALL SIZE (LxWxD)	MAIN BOWL SIZE (LxWxD)	SECOND BOWL SIZE (LxWxD)	HANDED	FAUCET HOLES	MINIMUM CABINET WIDTH REQUIRED	CUTOUT DIMENSION
RS1819-7	18 11/16" x 17 3/4" x 7 1/4"	15 15/16" x 15 3/16" x 7 1/4"	N/A	N/A	N/A	24"	Template supplied with sink



-  Accessories are included:

KA69M Stainless Steel Sink Grid



OPTIONAL ACCESSORY

KA12M Stainless Steel Dish Draining Basket



www.lifeluxurymarvel.com

Marvel Industries

P.O. Box 997
Richmond, IN
47375-0997
800.428.6644
765.962.2493 fax
An AGA Company

Job Name: _____ Customer: _____

Date: _____ Designer: _____

Quantity: _____ Contractor: _____