

Frigidaire

Factory Parts Catalog

Product No.	FGTC2349KS1
Series	counter depth
Color	stainless
Volts	115
Wiring Diagram	241638600
Owner's Guide	241857500
Market	North America
Energy Guide	241935573
Service Data Sheet	241639000

 **Electrolux**

Electrolux Major Appliances
North & Latin America
P.O. BOX 212378
AUGUSTA, GA 30917

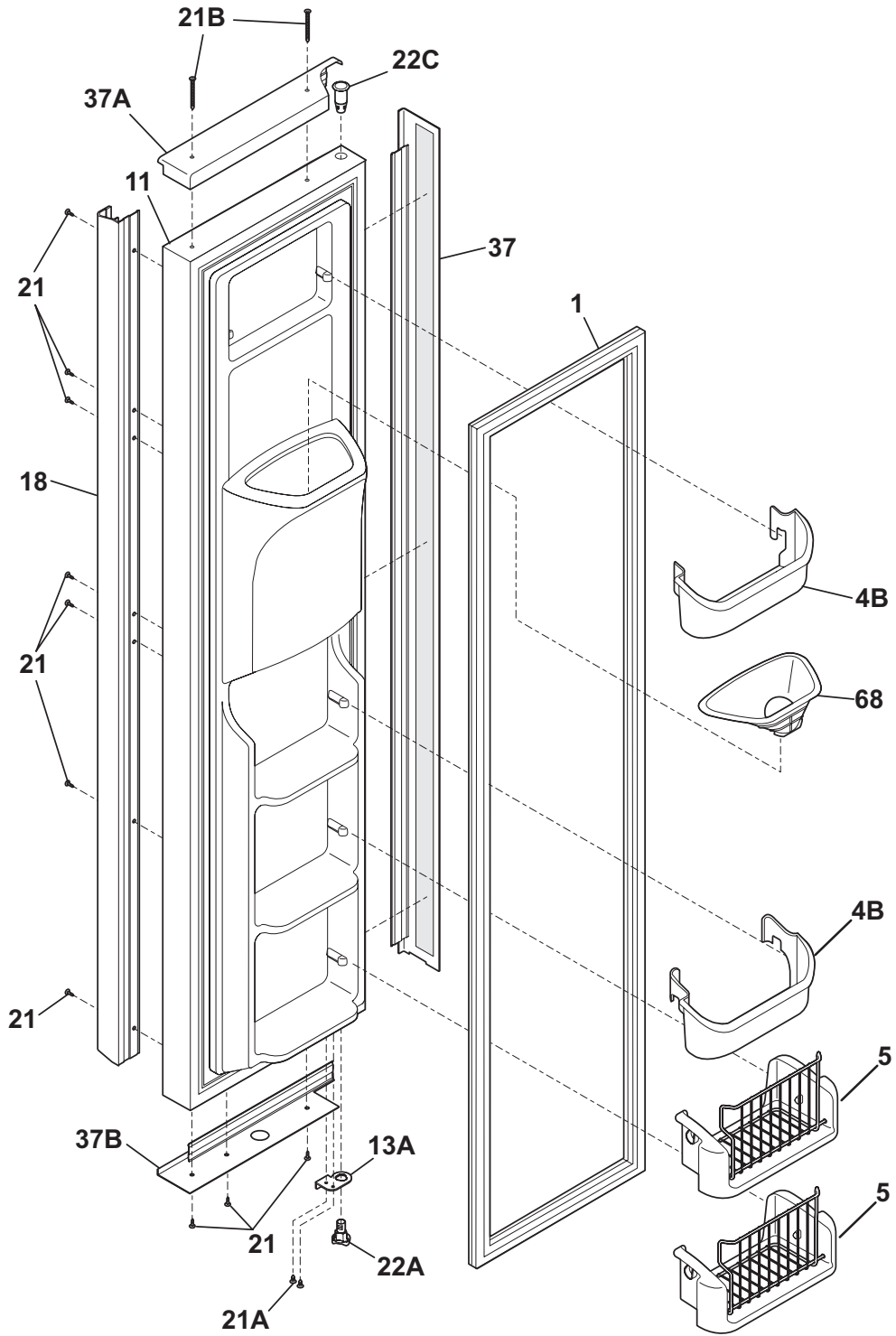
Publication No.
5995536389
09/03/25
(EN/SERVICE/DCS)
137

**SIDE-BY-SIDE
REFRIGERATOR**

Model No.
FGTC2349K

Copyright © 2009 Electrolux Home Products, Inc.
All rights reserved.

FREEZER DOOR

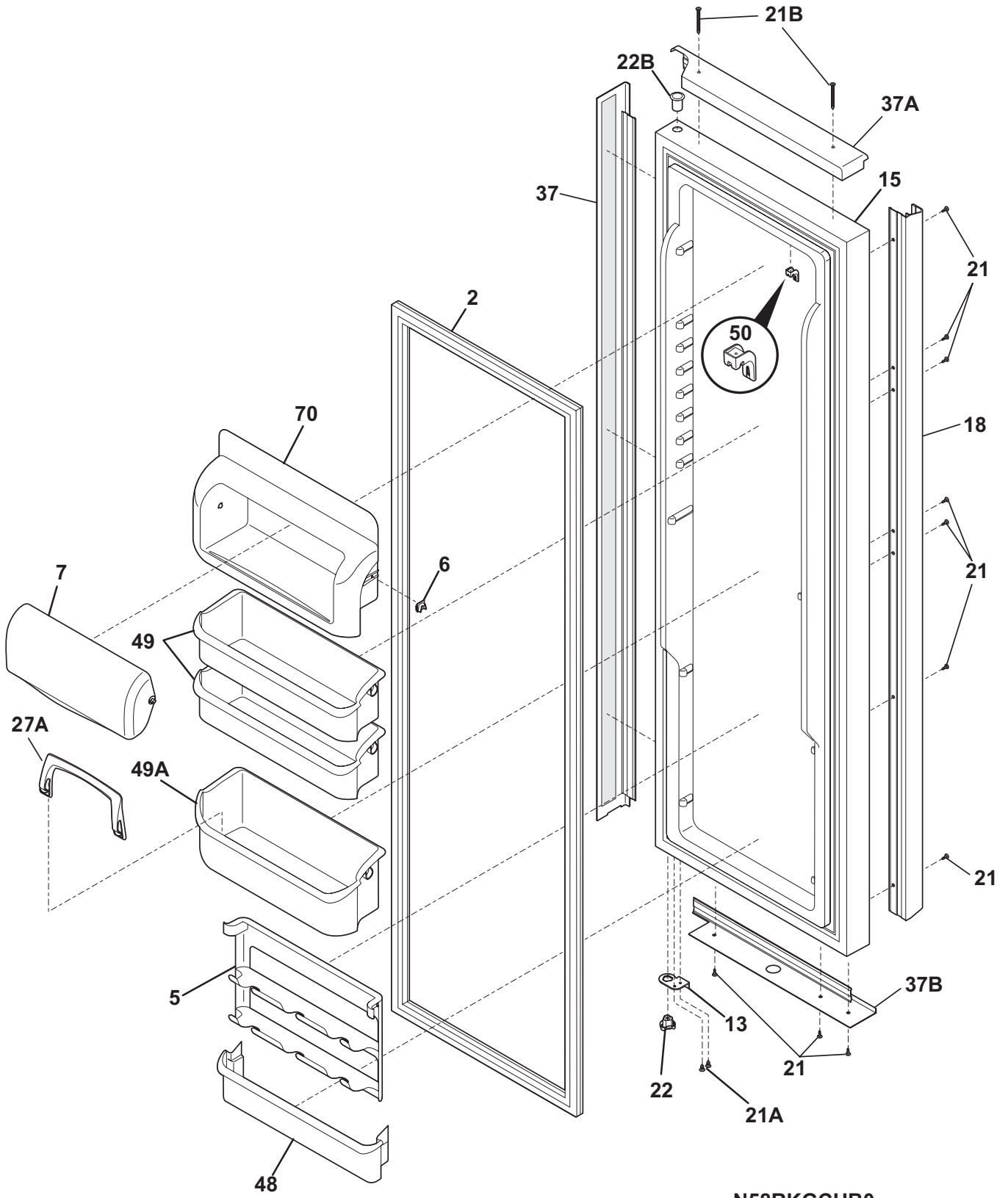


N58FKGBGA0

FREEZER DOOR

POS. NO	PART NO.	DESCRIPTION
1	241510204	Gasket-frzr door, black, magnetic
4B	241808225	Bin-door, pseudo, frzr
5	241545001	Bin-tilt out, tilt-out
11	241615189	Door-frzr, black, complete assy
13A	240581906	Door Stop, black, frzr
18	241533607	Handle-frzr door, aluminum
21	218781101	Screw, pan head, 8-18 x 0.625
21A	240598402	Screw, 10-32 x 1/2
21B	241543202	Screw, #10-16 x 2
22A	240328202	Bearing-hinge(frz), closer
22C	240328404	Bearing-hinge, black, upper
37	241533707	Trim-door, brushed aluminu, side
37A	241534207	Trim-door, aluminum, top
37B	241533807	Trim-door, aluminum, bottom
68	241525101	Chute-ice
*	240411502	Clip-dispenser cover
*	240451503	Screw, ind hex wshr hd, 8-32 x 0.375, trilobe
*	240552102	Harness-wiring, door
*	241806601	Connector-water, straight
*	5303918256	Dispenser heater kit

REFRIGERATOR DOOR

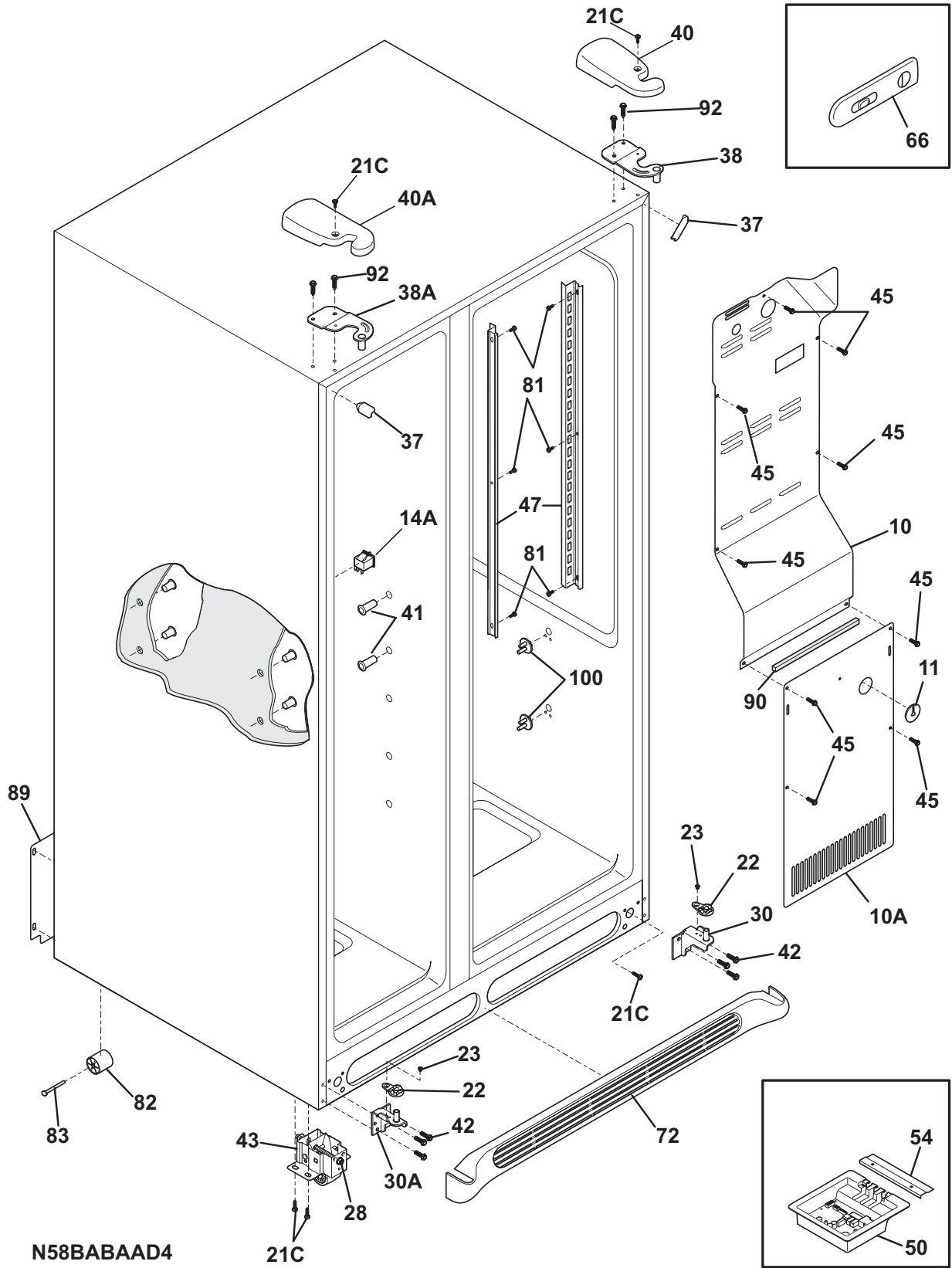


N58RKGCHB0

REFRIGERATOR DOOR

POS. NO	PART NO.	DESCRIPTION
2 #	241510203	Gasket-refr door, black, magnetic
5	241516102	Rack-can
6	241515901	Lug-dairy compartment
7	241515601	Door-dairy
13	240581905	Door Stop, black, ref
15	241534515	Door-refr, black, complete assy
18	241533608	Handle-refr door, aluminum
21	218781101	Screw, pan head, 8-18 x 0.625
21A	240598402	Screw, 10-32 x 1/2
21B	241543202	Screw, #10-16 x 2
22	240328203	Bearing-hinge, black, closer
22B	240328404	Bearing-hinge, black, upper
27A	241812702	Retainer, tall bottle
37	241533708	Trim-door, aluminum, side
37A	241534208	Trim-door, aluminum, top
37B	241533808	Trim-door, aluminum, bottom
48	241808224	Bin-door, ref
49	241808222	Bin-door, 2 liter
49*	241779903	Liner, bin, 2 liter
49A	241808223	Bin-door, gallon, w/trim
49A*	241780003	Liner, bin, gallon
50	241508401	Cover-magnet
70	241515801	Compartment-dairy, removable

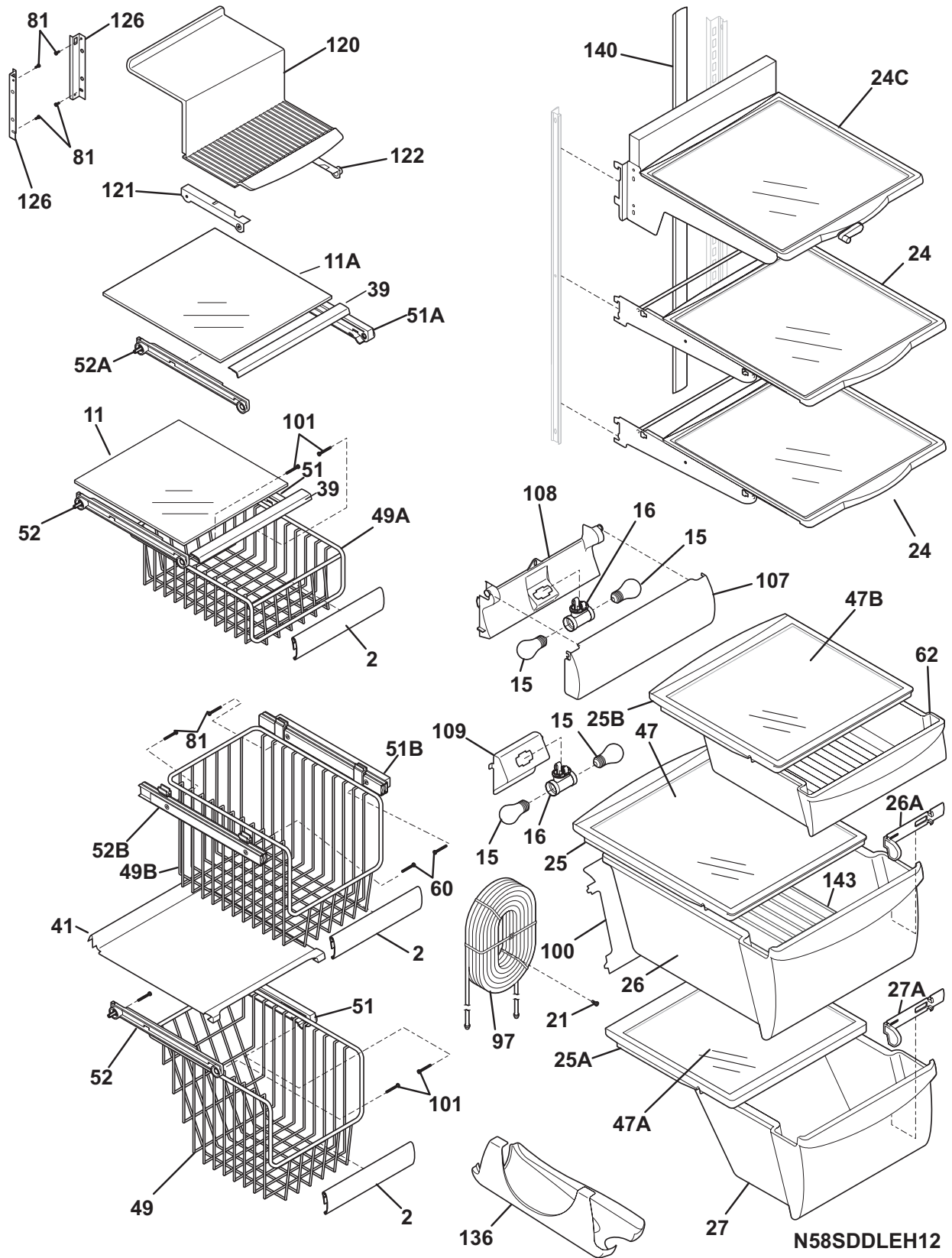
CABINET



CABINET

POS. NO	PART NO.	DESCRIPTION
10	241509804	Cover-air duct
10A	241719711	Cover-evap coil, lower
11	5303208309	Plug-hole, factory test
14A	241547901	Switch-light/lamp, frizr door
21C	218252201	Screw, #8 truss hd, 10-32CA x 0.500
22	240457702	Plate-door closer
23	240402702	Screw-#10-32 x 1/4 flat hd
28	240335502	Bolt-roller adj, hex washer head, 1/4-20 x 4.020, (2), special
30	241603703	Bracket-lower hinge, ref
30A	241603704	Bracket-lower hinge
37	240337610	Trim-cabinet corner, black, (2)
38	241617905	Bracket-upper hinge
38A	241617906	Bracket-upper hinge
40	241519208	Cover-upper hinge, silver metallic
40A	241519207	Cover-upper hinge, silver metallic
41	241550801	Grommet-shelf mtg, 1.40" long
41*	241550701	Grommet-shelf mtg, .96" long
42	240578902	Screw, hex head, 1/4-20 x 5/8
43	240335006	Roller Assy, front, (2)
45	241500303	Screw, hex washer head, 8-18AB x 0.500
47	241513001	Channel-shelf mtg, side, (2)
50	241511112	Board-main power
50*	241524802	Seal, housing
50*	241532501	Clip-harness
54	241532401	Channel
66	241513601	Damper Assy
72	240324414	Grille/Kickplate, metallic gray
81	5304455650	Screw, hex washer head, 8-15A x 0.625, low profile
82	5304418225	Roller, compressor base, rear, (2)
83	5304455655	Rivet, flat head, 1/4 OD x 1-3/4, roller pin
89	241733902	Cover-access, w/label
90	218249808	Seal-coil cover
92	241710601	Screw, hex washer hd, 1/4 x 7/8, hinge mtg
100	240423701	Support, crisper cover, front, (4)
100*	240350802	Support, crisper cover, rear, (4)
*	5303321321	Paint, touch-up, black
*	241591701	Louver

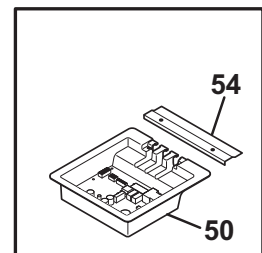
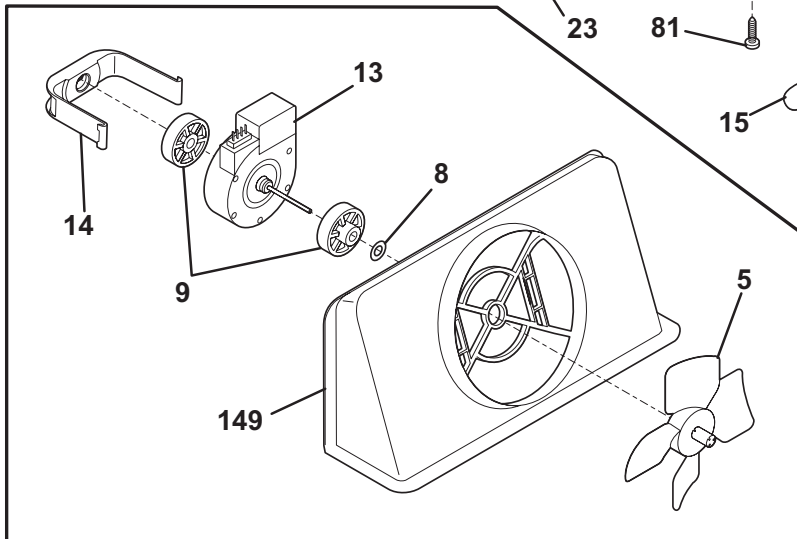
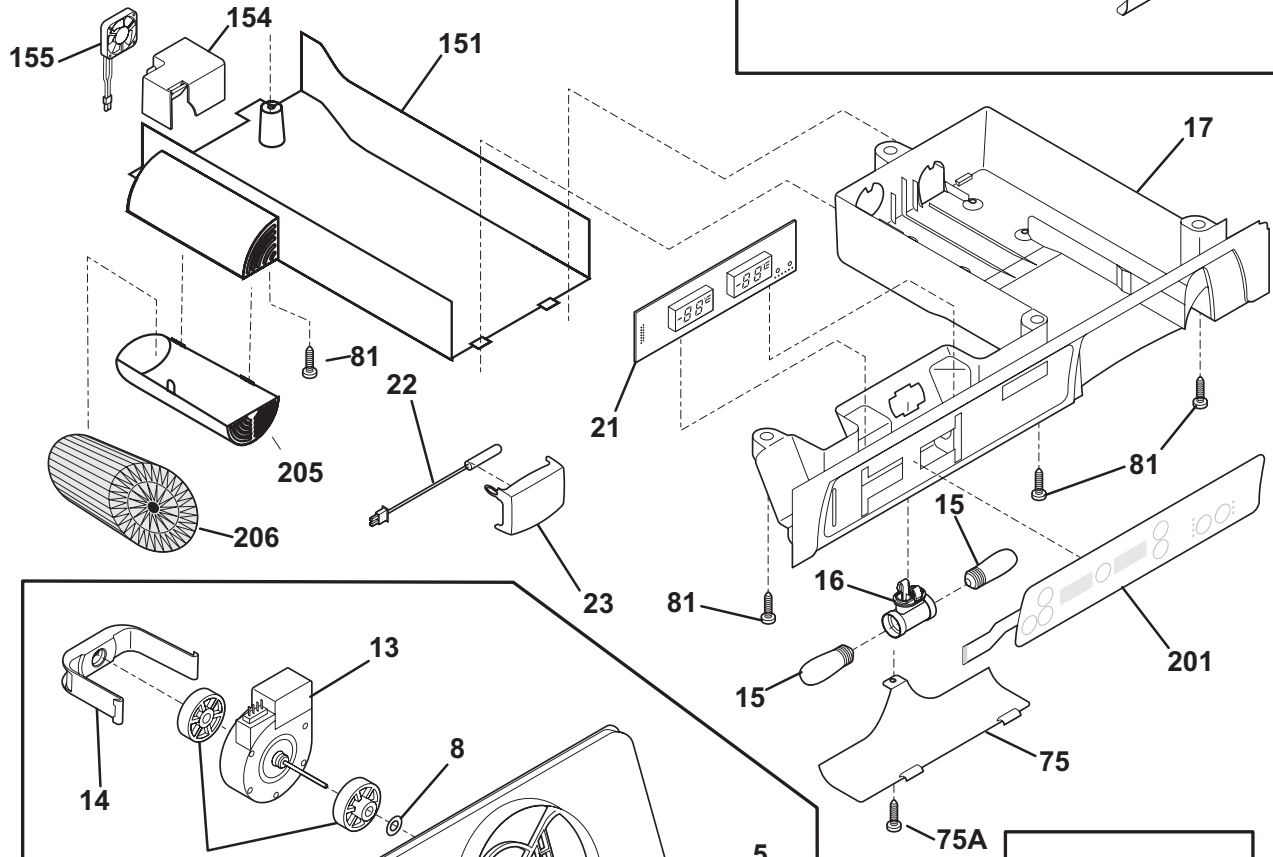
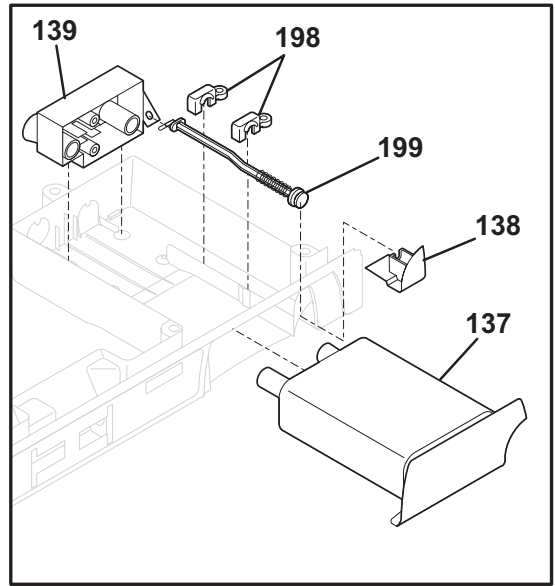
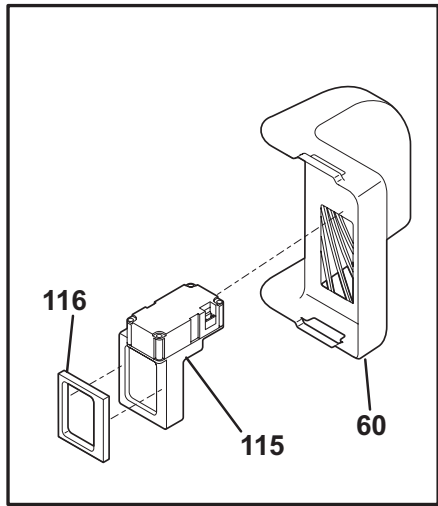
SHELVES



SHELVES

POS. NO	PART NO.	DESCRIPTION
2	241510608	Trim-basket
11	240443357	Shelf-freezer, glass, lower
11A	240443358	Shelf-freezer, glass, upper
15	241552801	Light Bulb
16	241622802	Socket-light, frz light
16*	241513101	Harness-wiring
21	5304455658	Screw, hx wshr hd sems, 8-15A x 0.625
24	240350137	Shelf-"Spill-Safe", cantilver, sliding
24C	240424615	Shelf-"Spill-Safe", "Aspect", complete
25	240599302	Cover-crisper pan, upper
25*	240362101	Clip-slide, cover-crisper
25A	240350902	Cover-crisper pan, lower
25B	240599801	Cover-meat pan
26	240351062	Pan-crisper, upper
26*	240349801	Clip-slide, pan-crisper
26*	241595202	Clip-slide, pan-crisper
26A	241638201	Control-humidity
26A*	241638101	Frame-humidity control
27	240351241	Pan-crisper, lower
27A	240362201	Control-humidity
39	240367603	Trim-shelf, 11.65", front
41	241637601	Baffle-air
47	240350649	Insert-pan cover, glass
47A	240350603	Insert-pan cover, glass
47B	240443356	Insert-pan cover, glass
49	241515001	Basket-sliding
49A	241528001	Basket-sliding, upper, half
49B	241514901	Basket-sliding, upper, full
51	241514501	Hanger-basket, RH
51A	241514701	Hanger-shelf glass, RH
51B	240579803	Hanger-basket, RH
52	241514601	Hanger-basket, LH
52A	241514801	Hanger-shelf glass, LH
52B	240579804	Hanger-basket, LH
60	218362501	Screw, hex washer head, 8-18AB x 1.250, spacer, (2)
62	240599718	Pan-meat
81	5304455650	Screw, hex washer head, 8-15A x 0.625, low profile
97	241532005	Water Tank
100	240326304	Cover-water tank
101	218493101	Screw, hex washer head, 8-18AB x 1-3/4
107	241513402	Shield-light, meat pan
108	241513301	Cover-wiring, meat pan light
109	241513202	Base-crisper light socket
120	241691701	Shelf-ice cream
121	241504701	Rail-ice cream shelf, LH
122	241504702	Rail-ice cream shelf, RH
126	241674401	Channel, auger mtg, LH
126	241674402	Channel, auger mtg, RH
136	241657701	Dispenser-can, white
140	240430505	Channel, wtr tube cover
143	240423301	Divider-crisper pan
*	241935573	Energy Guide

CONTROLS

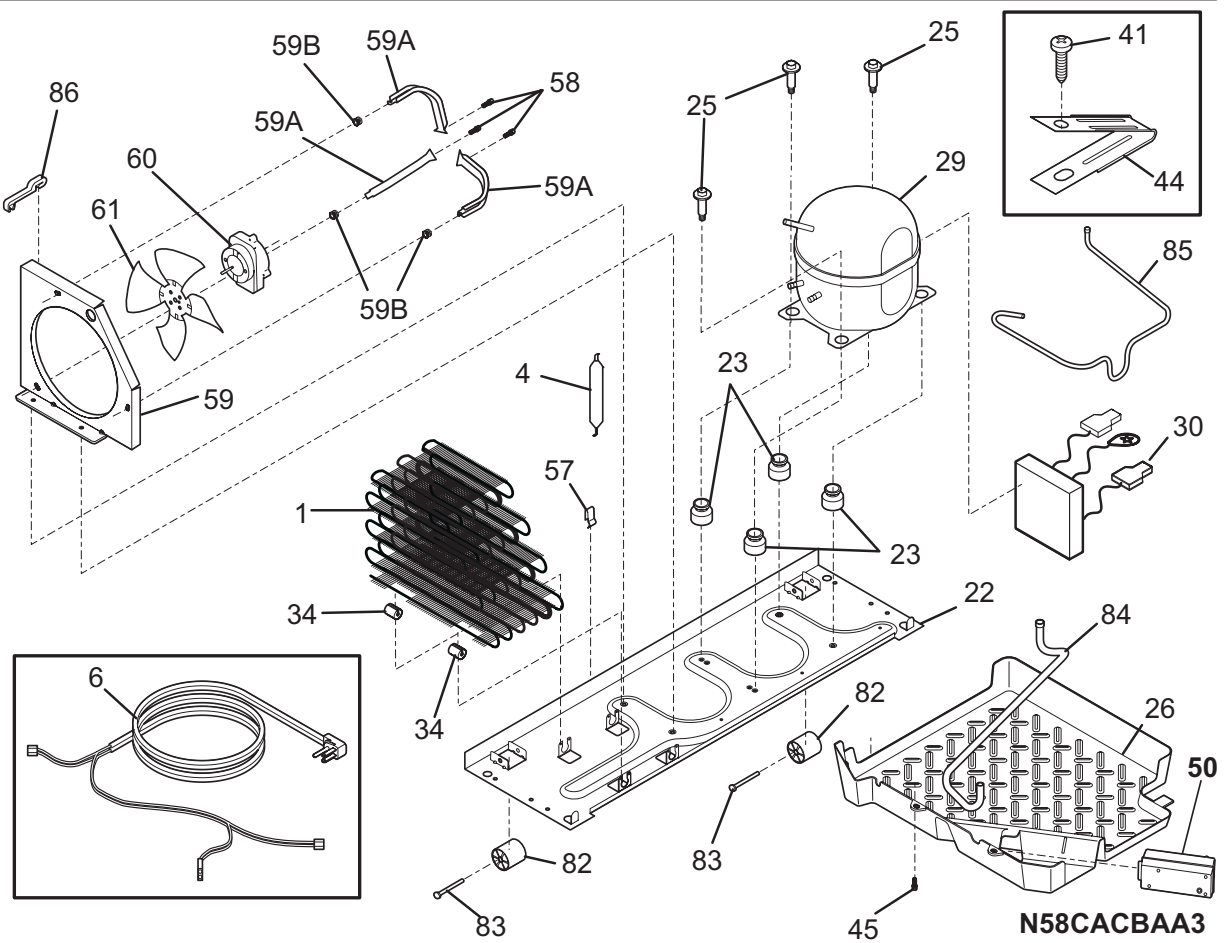
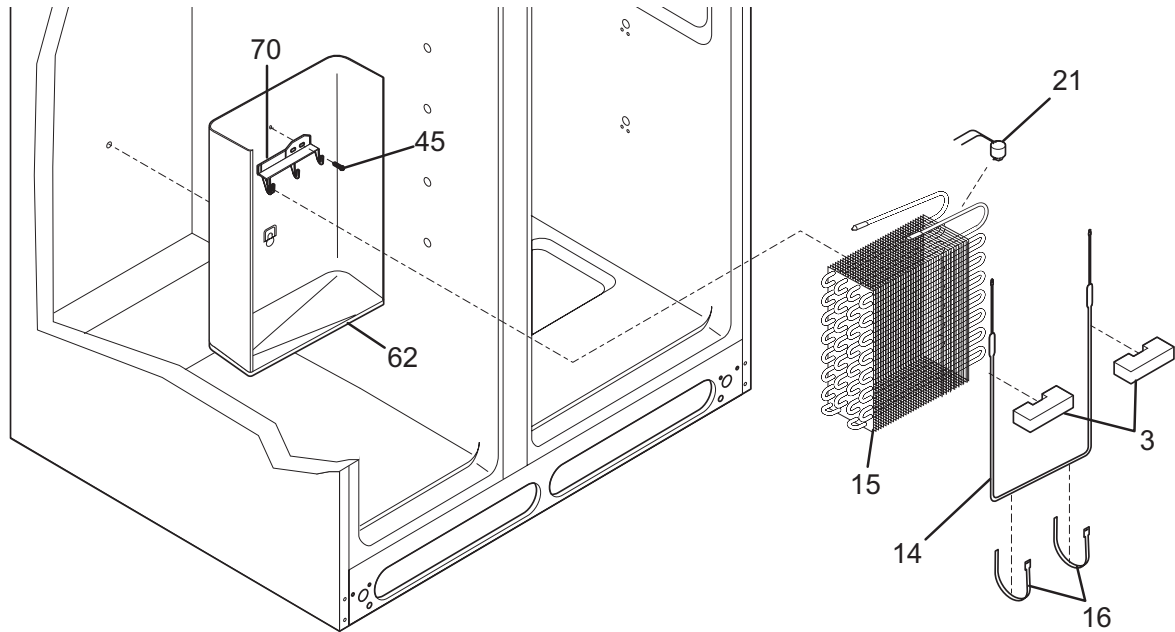


N58TBBAAB5

CONTROLS

POS. NO	PART NO.	DESCRIPTION
5 #	5308000010	Fan Blade, red, evaporator fan
8	215474201	Washer, "slinger", nylon, evap fan shaft
9	241518301	Bushing, motor mounting
13	241509402	Motor, evaporator fan
13*	241510501	Seal-diffuser
14	241517701	Clip, evap fan motor
15	241552801	Light Bulb
16	241622802	Socket-light, frz light
17	241516201	Box-control, front
17*#	241510802	Harness-wiring, frz light
21 #	240596705	Control, electronic
22	240597203	Sensor
23	241512901	Cover-sensor
23*	5304455649	Screw, pan hd, 6-20 x 0.438
50	241511112	Board-main power
50*	241524802	Seal, housing
50*	241532501	Clip-harness
54	241532401	Channel
60	241510301	Diffuser-air
75	241517802	Shield-light
75A	5304455650	Screw, hex washer head, 8-15A x 0.625, low profile
81	5304455658	Screw, hx wshr hd sems, 8-15A x 0.625
115	241518501	Damper, motorized
116	241518601	Seal-damper, foam
137	240396401	Filter, water, carbon cassette, front, with o'rings
137*	240396701	Bypass, water filter, Optional Part
138	240397301	Button-filter release
139	240396002	Base-water filter
139*	240526901	O-ring, wtr filter base
149	241517601	Shroud-evap fan mtg
149*	241528304	Seal, foam, evap fan assy
151	241526001	Filter housing
154	241525801	Duct-air
155	241526102	Motor-air filter
155*	241527202	Harness-wiring, filter fan
198	240397401	Retainer
199	240397501	Rod
199*	240398401	Spring-filter release rod
201	241816703	Switch-membrane
205	241525901	Air Filter Door
206	241504902	Filter-air
*	3205266	Edge Protector, wiring harness
*	241537401	Shield

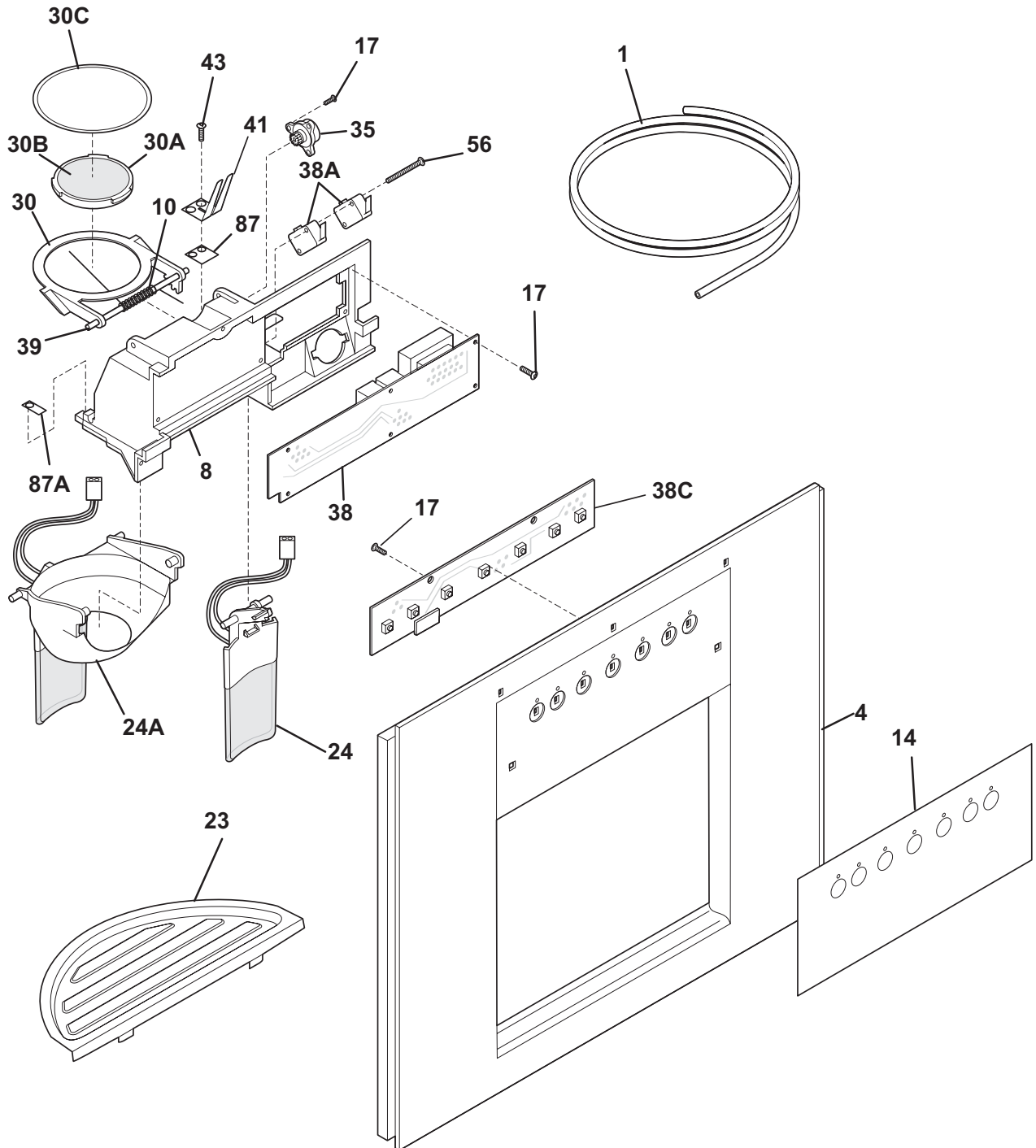
SYSTEM



SYSTEM

POS. NO	PART NO.	DESCRIPTION
1	240333603	Condenser
3	218679607	Block-evap coil, styrofoam, (2)
4 #	218944001	Drier-filter, R134a System
6 #	241516901	Cord-service
6* #	241510802	Harness-wiring, frz light
6* #	241519902	Harness-wiring
6* #	241527202	Harness-wiring, filter fan
6* #	241636203	Harness-wiring, machine compt
14 #	241940201	Heater-defrost
15 #	5303918284	Evaporator Kit
16	5308000110	Strap-evap/heater, aluminum, (2)
21 #	5303918214	Thermostat-defrost, kit
22	240330011	Base-compressor mtg
22*	218252201	Screw, #8 truss hd, 10-32CA x 0.500
23	218513300	Grommet-compr mtg, (4)
25	240491503	Screw-compressor mtg, 1/4-28 x 1.16, (4)
26	241697501	Pan-defrost drain
29 #	5303918396	Compressor Kit
30 #	241577505	Invertor
34	240405201	Grommet, rubber, black, cond tube/wire
41	240555002	Screw-#8-32 X 3/8
44	215174700	Clamp-service cord, strain relief, galv steel
45	5304455650	Screw, hex washer head, 8-15A x 0.625, low profile
50	241635501	Housing-control, apollo lighting
50*	241641501	Screw
57	240542601	Clip-wiring harness
58	240433203	Screw, hex washer head, 8-18 x 3/8
59	240315502	Shroud-cond fan
59*	240346701	Tape-foam seal, shroud
59*	240359403	Screw-fan shroud, (2)
59A	240346501	Bracket-support, cond mtr, (3)
59B	240346601	Grommet-bracket, (3)
60 #	241584301	Motor-condenser fan
61	241639501	Blade-condenser fan
62	240429402	Trough-drain
70	218990801	Bracket-evap/cvr mtg
82	5304418225	Roller, compressor base, rear, (2)
83	5304455655	Rivet, flat head, 1/4 OD x 1-3/4, roller pin
84	241957901	Tube-drain, lower
85	241871501	Tube-connector, suction
86	240409302	Spacer-cond tube, black
*	5303918222	Hot Tube Repair Kit, service
* #	5303918327	Heat Exchanger Kit, suction line

ICE & WATER DISPENSER

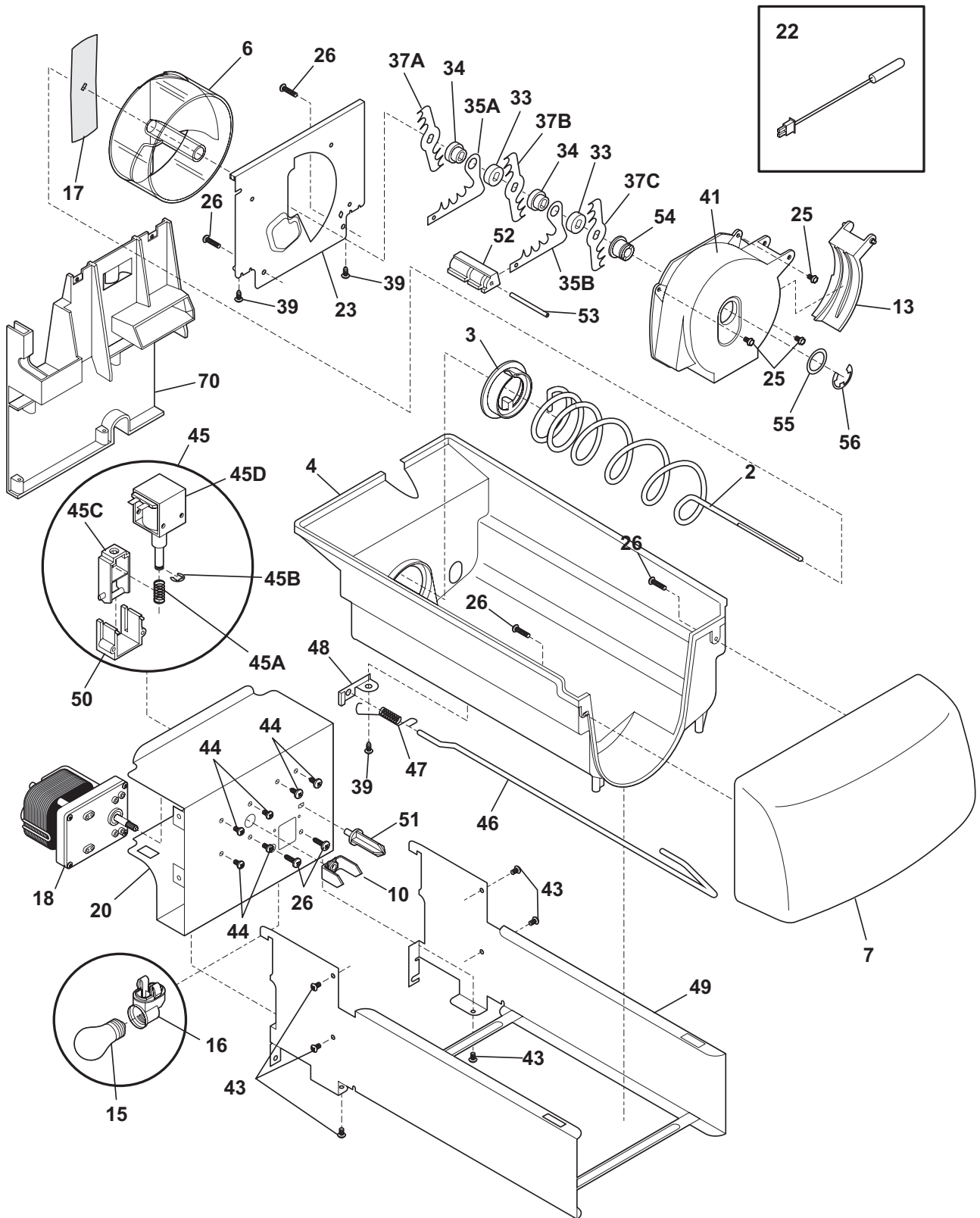


N58XEBA002

ICE & WATER DISPENSER

POS. NO	PART NO.	DESCRIPTION
1	218976409	Tube, water, door
1*	218976418	Tube-water inlet, inlet valve, to filter
1*	218976421	Tube-water inlet, valve to door
1*	218976915	Tube-water inlet, inlet valve, to filter
1*	240561702	Seal-water inlet, inlet valve, to ice maker
4	241678905	Cover-module, silver metallic
4*	240363402	Screw-#8-18 X 1/2, #6 hd plask
8	241680504	Module-dispenser
10	241688901	Spring-torsion
14	241543418	Label-module cover, silver metallic
17	241679801	Screw
23	241659204	Drip Tray, silver metallic
24	241685704	Actuator, stainless
24A	241682304	Actuator-ice, stainless
30	241688401	Door Assy-ice chute
30A	241688501	Door center
30B	241688601	Insulation-door
30C	241688701	Door seal
35	241689301	Damper-rotary
38	241527601	Board-power
38A#	241689101	Switch-micro, single pole, double throw
38C#	241708307	Board-control
38C*	241680001	Harness-ribbon cable
39	241688801	Pin-hinge
41	241689001	Spring-actuator
43	215296301	Screw, plask h/l, #6 x 3/8
56	241689201	Screw-micro switch, pan head
87	241688302	Bearing Plate
87A	241688301	Bearing Plate
*	240411502	Clip-dispenser cover
*	241686201	Insulator-electrical
*	5303918256	Dispenser heater kit

ICE CONTAINER

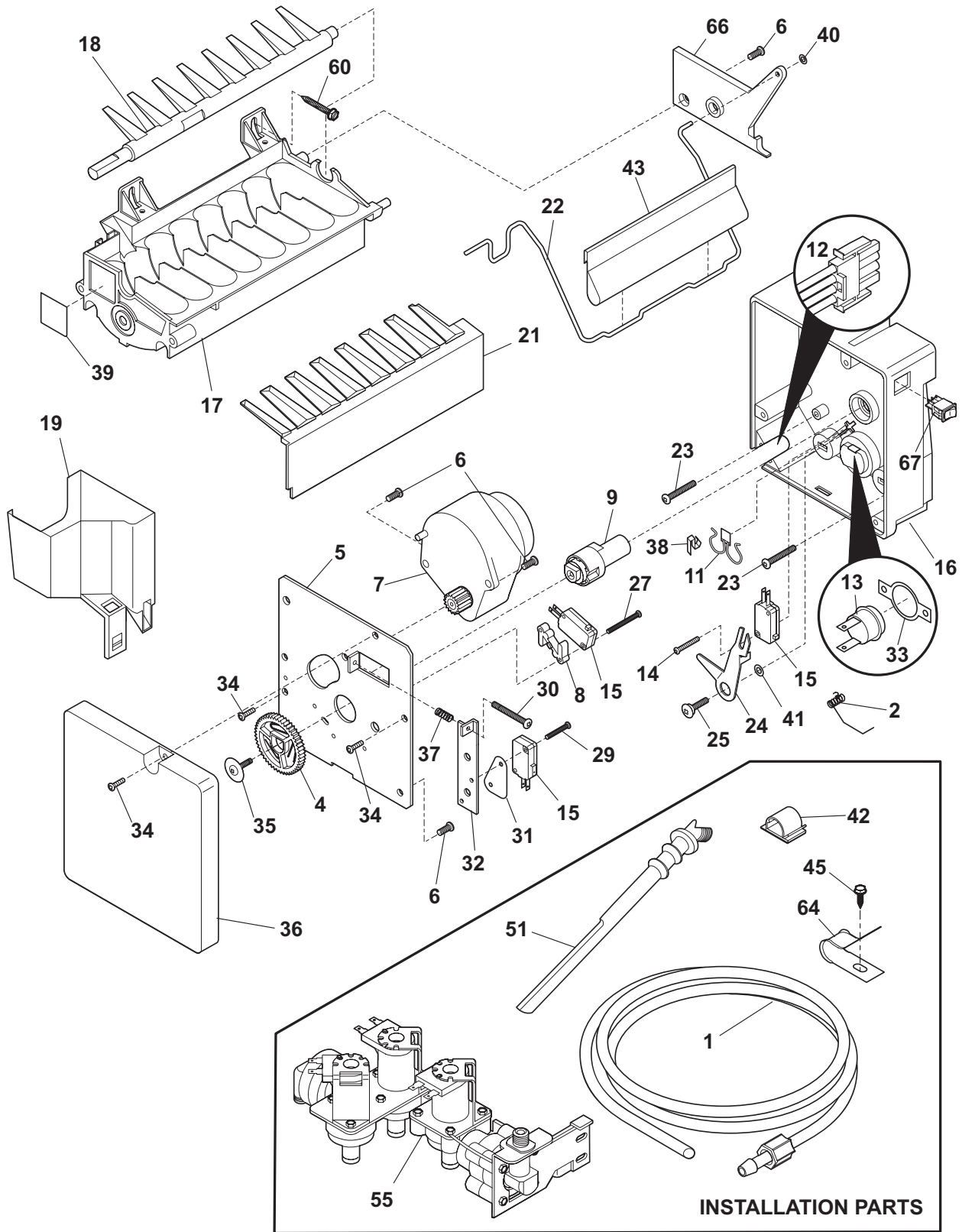


N58YDAAAC4

ICE CONTAINER

POS. NO	PART NO.	DESCRIPTION
2	241684701	Auger-ice
3	241685201	Cam-drive
4	241515202	Container-ice, bucket only
6	241685101	Drum-ice disp
7	241515302	Front-ice container
10	241726501	Bar-drive
13	241685301	Gate
15	241555401	Light Bulb
16	241559801	Socket-light
17	241684501	Drive Blade
18 #	241676201	Motor-auger
18*	241522901	Harness-wiring, icmkr/container
20	241675502	Cover-motor
22	240597203	Sensor
22*	241519401	Clip, sensor
23	241684001	Plate-front
25	241690701	Screw, hex washer head, 8-32T x 0.375
26	215503203	Screw, cr pan hd, 10-16 x 0.500
33	241684801	Spacer
34	241689801	Spacer
35A	241684301	Fixed Blade, round
35B	241684201	Fixed Blade, square
37A	241684101	Blade, crusher #1
37B	241684102	Blade, crusher #2
37C	241684103	Blade, crusher #3
39	241690501	Screw
41	241685601	Housing-crusher
43	218359202	Screw, pan head, 8-32 x 0.250
44	241842101	Screw, 8-32 x 1/4
45 #	241675701	Solenoid Assy, 115V
45A	241675901	Spring-solenoid
45B	241676001	E-Ring-solenoid
45C	241676101	Actuator-solenoid
45D#	241675801	Solenoid, 115V
46	241684402	Control Rod
47	241731801	Spring-control rod
48	241684602	Bracket-control rod
49	241676501	Rail Assy
50	241675601	Guide-solenoid
51	241676301	Rotation Stop
52	241684901	Spacer-fixed blades
53	241690402	Pin-spiral, fixed blades
54	241685001	Nut-auger
55	241690306	Washer
56	241690201	E-ring
70	241504601	Plate-mounting
70*	215005101	Screw, hanger/rtr mtg, 8-10 x 7/16
70*	241551602	Screw, hex head, 8-18B x 0.875
70*	241716801	Clip
*	240562101	Insulator
*	241914703	Ice Container Assy, w/moving parts

ICE MAKER

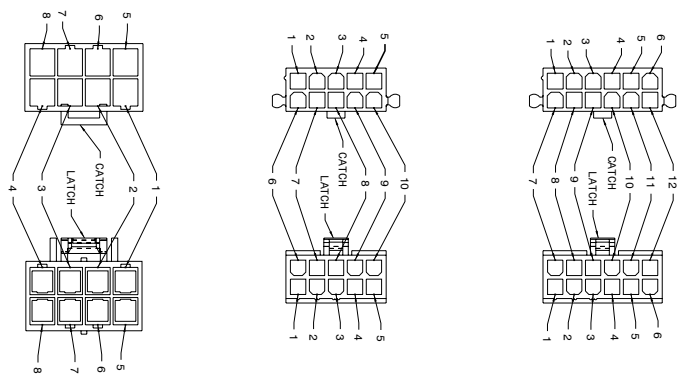
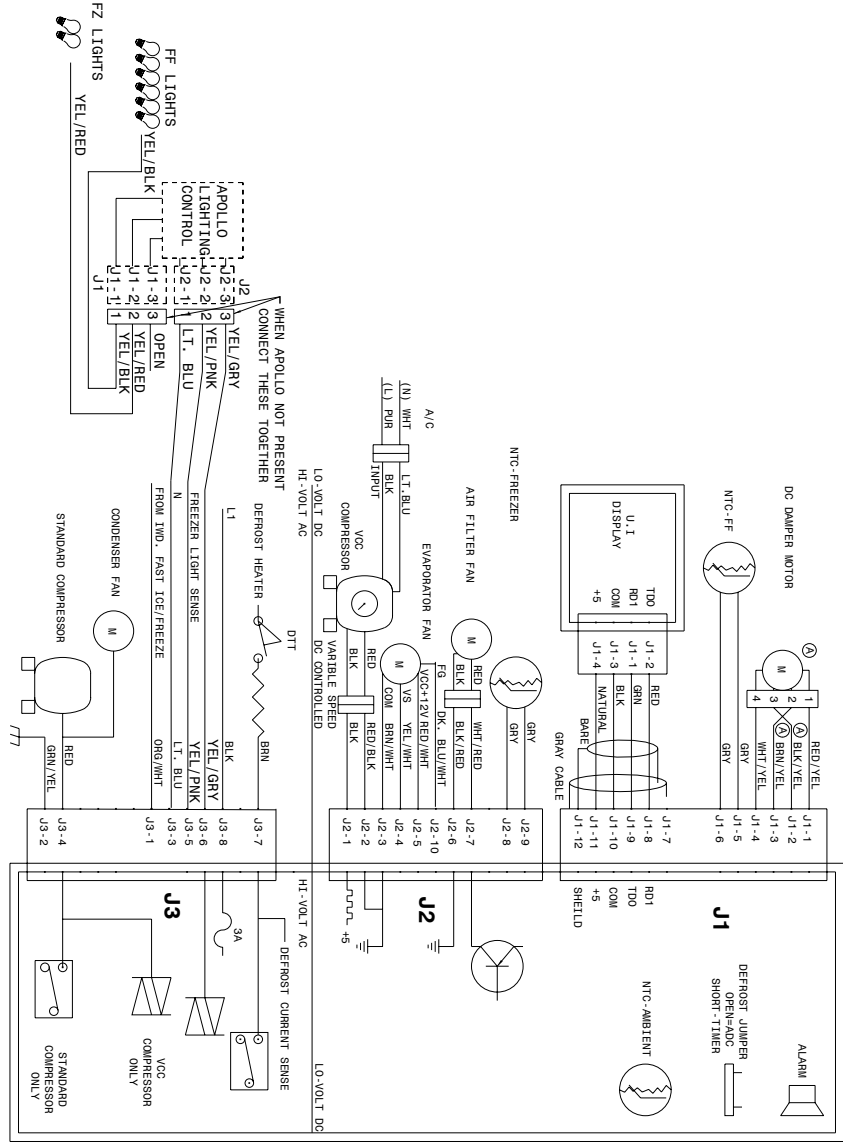


N581115TServo

ICE MAKER

POS. NO	PART NO.	DESCRIPTION
1	218976409	Tube, water, door
1*	218976418	Tube-water inlet, inlet valve, to filter
1*	218976421	Tube-water inlet, valve to door
1*	218976915	Tube-water inlet, inlet valve, to filter
1*	240561702	Seal-water inlet, inlet valve, to ice maker
2	5304456650	Spring-shutoff arm, ice maker
4	5304458380	Gear
5	5304458383	Plate-mounting
6	5304458386	Screw
7 #	5304458382	Motor-ice maker Svo
8	5304458388	Spacer-hold switch
9	5304456662	Cam
11 #	5304458400	Thermal Cutoff, ice maker
12	5304458379	Harness-wiring
13	5304456665	Thermostat, ice maker
14	5304458384	Screw
15 #	5304456667	Switch-micro, (3)
16	5304458395	Housing, control
17	5304456669	Mold-ice maker, w/therm cut off
18	5304458377	Ejector-ice
18*	241522901	Harness-wiring, icmkr/container
19	5304458378	Cup-water inlet
21	5304458390	Ice Stripper
22	5304458375	Shut-off Arm
23	5304458394	Screw
24	5304458391	Lever Arm
25	5304456676	Screw, M 4x12.8 #2, lever arm/sprt
27	5304458385	Screw
29	5304458393	Screw
30	5304458387	Screw
31	5304458381	Insulator
32	5304456681	Plate-valve switch
33	5304458403	Retainer-thermostat
34	5304456678	Screw, M 3x12 #3, (2)
35	5304456684	Screw
36	5304458376	Cover-ice maker
37	5304456682	Spring, timing adjust
38	5304458398	Clip
39	5304458399	Conductor-heat
40	5304458401	Clip-retainer
41	5304458389	Screw
42	218515403	Clip-grille
43	241720601	Extension
45	5304455650	Screw, hex washer head, 8-15A x 0.625, low profile
51	241796402	Tube-water fill, extension
55 #	241734301	Valve-water, triple solenoid
55*	218709101	Screw, hex head, 10-32 x 0.500
55*	240363602	Screw-shoulder
60	5304455651	Screw, hex washer head, 8-15A x 0.500
64	5304455846	Clamp, .31 ID, steel, water tube
66	5304458374	Bracket-ice maker
67	5304458392	Switch-on/off
*	241583301	Deflector-air, ice maker
*	241806601	Connector-water, straight
*	5304456660	Screw, M 4x6 #2
*	5304456689	Washer, nylon
* #	241709801	Ice Maker, radius cube, 115 V, no instl parts

WIRING SCHEMATIC



WIRING DIAGRAM

