

Frigidaire

Factory Parts Catalog

| | | |
|--------------------|----------------|----------------|
| Product No. | FGHS2369KE1 | FGHS2369KP1 |
| Series | Gallery | Gallery |
| Color | black (smooth) | white (smooth) |
| Volts | 115 | 115 |
| Wiring Diagram | 241912901 | 241912901 |
| Owner's Guide | 241979200 | 241979200 |
| Market | North America | North America |
| Energy Guide | 241935570 | 241935570 |
| Service Data Sheet | 240389638 | 240389638 |

 **Electrolux**

Electrolux Major Appliances
 North & Latin America
 P.O. BOX 212378
 AUGUSTA, GA 30917

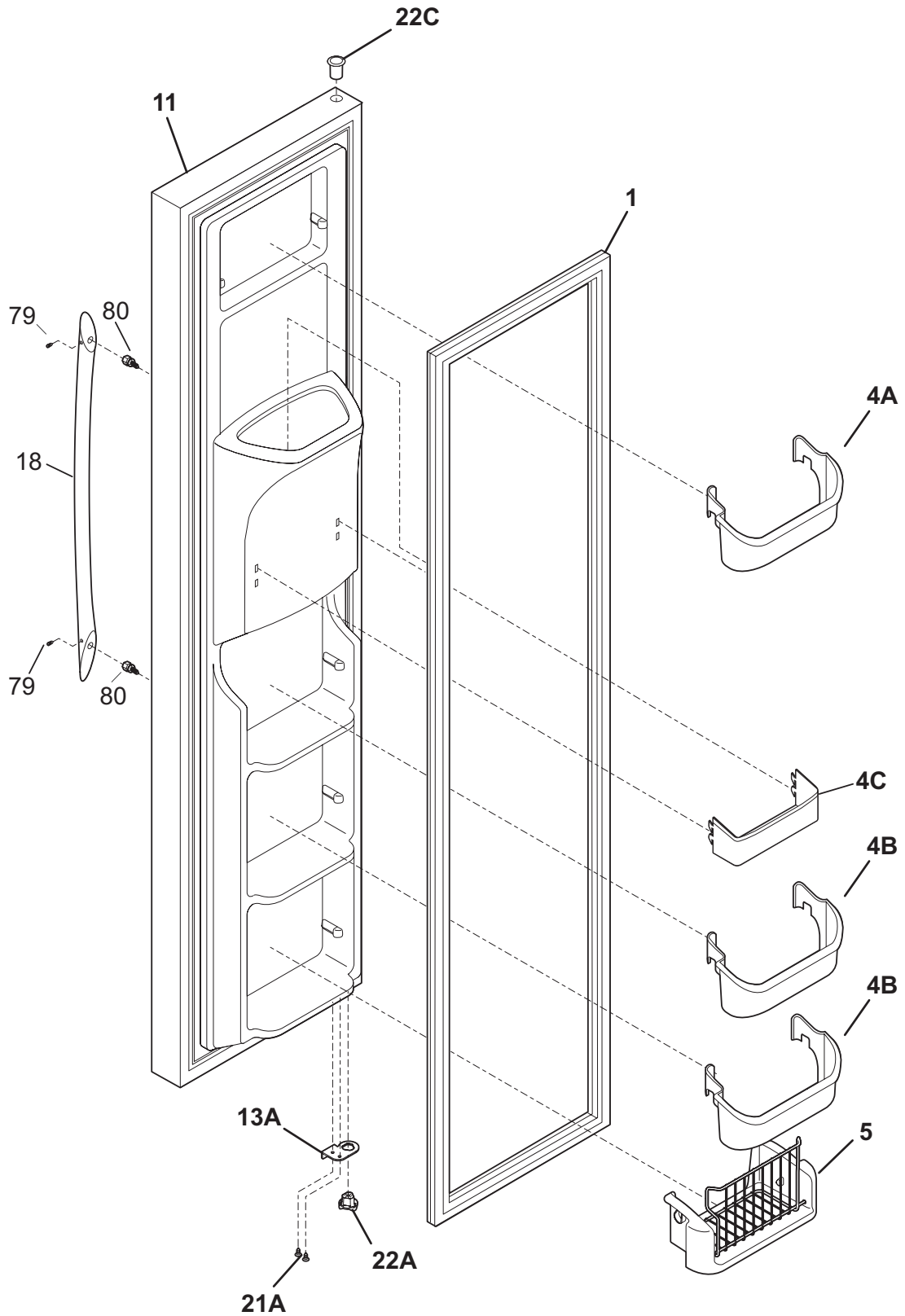
Publication No.
5995538492
 09/04/20
 (EN/SERVICE/KHB)
 137

**SIDE-BY-SIDE
 REFRIGERATOR**

Model No.
FGHS2369K

Copyright © 2009 Electrolux Home Products, Inc.
 All rights reserved.

FREEZER DOOR



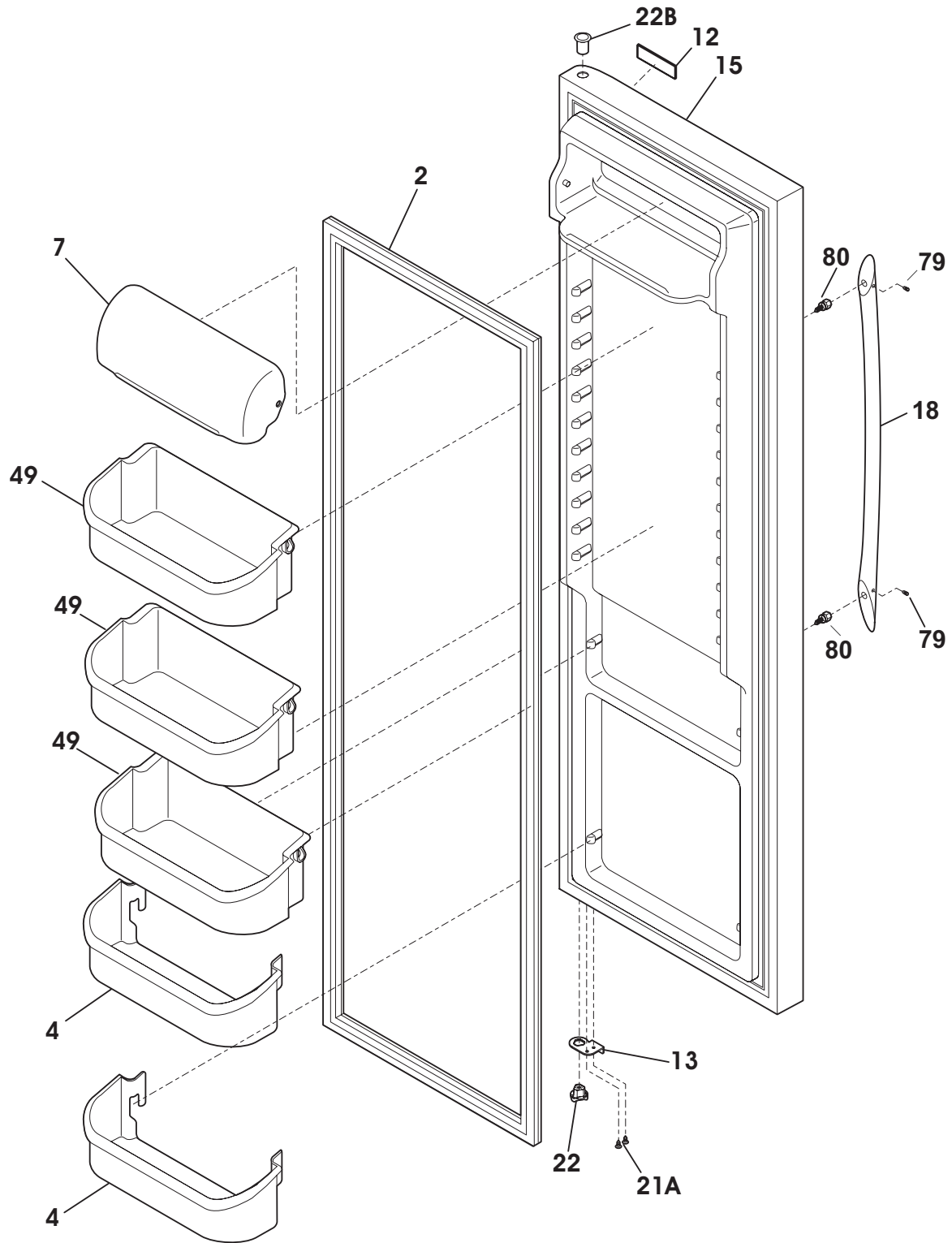
F58FFDCFA1

FREEZER DOOR

Model Index: A FGHS2369K (FGHS2369KE1)
 B FGHS2369K (FGHS2369KP1)

| POS. NO | PART NO. | | DESCRIPTION |
|---------|------------|-----|--|
| 1 | 241786008 | A - | Gasket-frzr door, black, magnetic |
| 1 | 241786004 | - B | Gasket-frzr door, white, magnetic |
| 4A | 240367301 | A B | Bin-door, frzr-upper |
| 4B | 240359001 | A B | Bin-door |
| 4C | 240358401 | A B | Bin-door, frzr-dispenser |
| 5 | 241545004 | A B | Bin-tilt out, tilt-out |
| 11 | 241993810 | A - | Door-frzr, black (smooth), complete assy |
| 11 | 241993809 | - B | Door-frzr, white (smooth), complete assy |
| 13A | 241942604 | A B | Door Stop, black, frzr |
| 18 | 241930103 | A - | Handle-door, black |
| 18 | 241930102 | - B | Handle-door, white |
| 18* | 241601002 | A B | Wrench, allen |
| 21A | 240442706 | A B | Screw-#10-32 X 3/4, zinc |
| 22A | 241990302 | A B | Bearing-hinge(frz), closer |
| 22C | 241760402 | A - | Bearing, hinge, top |
| 22C | 241760401 | - B | Bearing, hinge, top |
| 79 | 218755405 | A B | Screw-set, 10-32 x 0.650 |
| 80 | 218755504 | A B | Screw-shoulder, #10 AB, handle mounting |
| * | 240352102 | A B | Connector-water, straight |
| * # | 241834703 | A B | Harness-wiring, door |
| * | 5303918371 | A B | Dispenser heater kit, 115 |

REFRIGERATOR DOOR



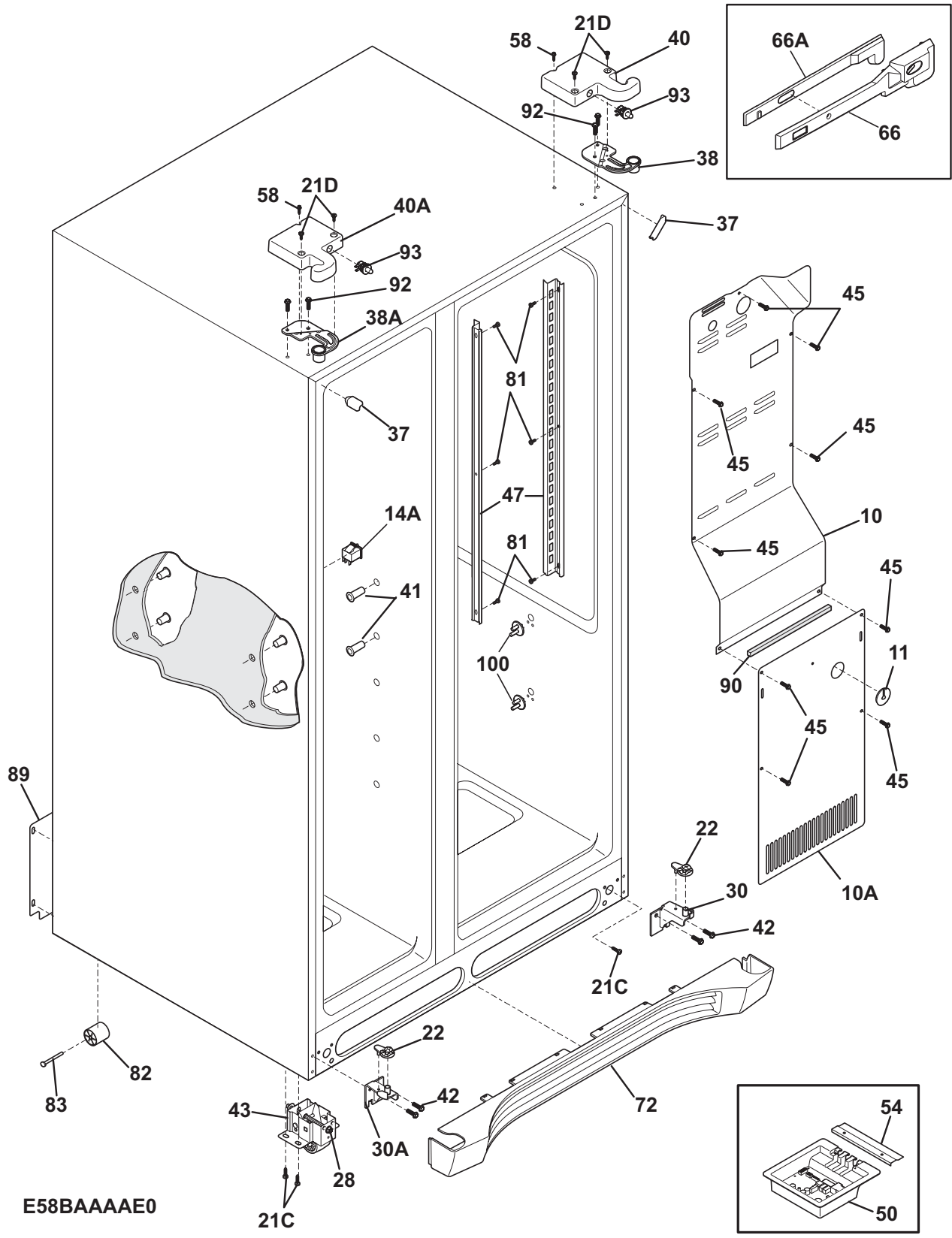
F58RFDAAA1

REFRIGERATOR DOOR

Model Index: A FGHS2369K (FGHS2369KE1)
 B FGHS2369K (FGHS2369KP1)

| POS. NO | PART NO. | | DESCRIPTION |
|---------|-----------|-----|---|
| 2 | 241786007 | A - | Gasket-refr door, black, magnetic |
| 2 | 241786003 | - B | Gasket-refr door, white, magnetic |
| 4 | 240363702 | A B | Bin-door, 2-liter |
| 7 | 240338303 | A B | Door, dairy, clear |
| 12 | 242015201 | A B | Label-nameplate |
| 13 | 241942603 | A B | Door Stop, black, ref |
| 15 | 241837283 | A - | Door-refr, smooth, black, complete assy |
| 15 | 241837278 | - B | Door-refr, smooth, white, complete assy |
| 18 | 241930103 | A - | Handle-door, black |
| 18 | 241930102 | - B | Handle-door, white |
| 18* | 241601002 | A B | Wrench, allen |
| 21A | 240442706 | A B | Screw-#10-32 X 3/4, zinc |
| 22 | 241990301 | A B | Bearing-hinge, gray |
| 22B | 241760404 | A - | Bearing, hinge, top |
| 22B | 241760403 | - B | Bearing, hinge, top |
| 49 | 241808226 | A B | Bin-door, gallon, w/trim |
| 79 | 218755405 | A B | Screw-set, 10-32 x 0.650 |
| 80 | 218755504 | A B | Screw-shoulder, #10 AB, handle mounting |

CABINET



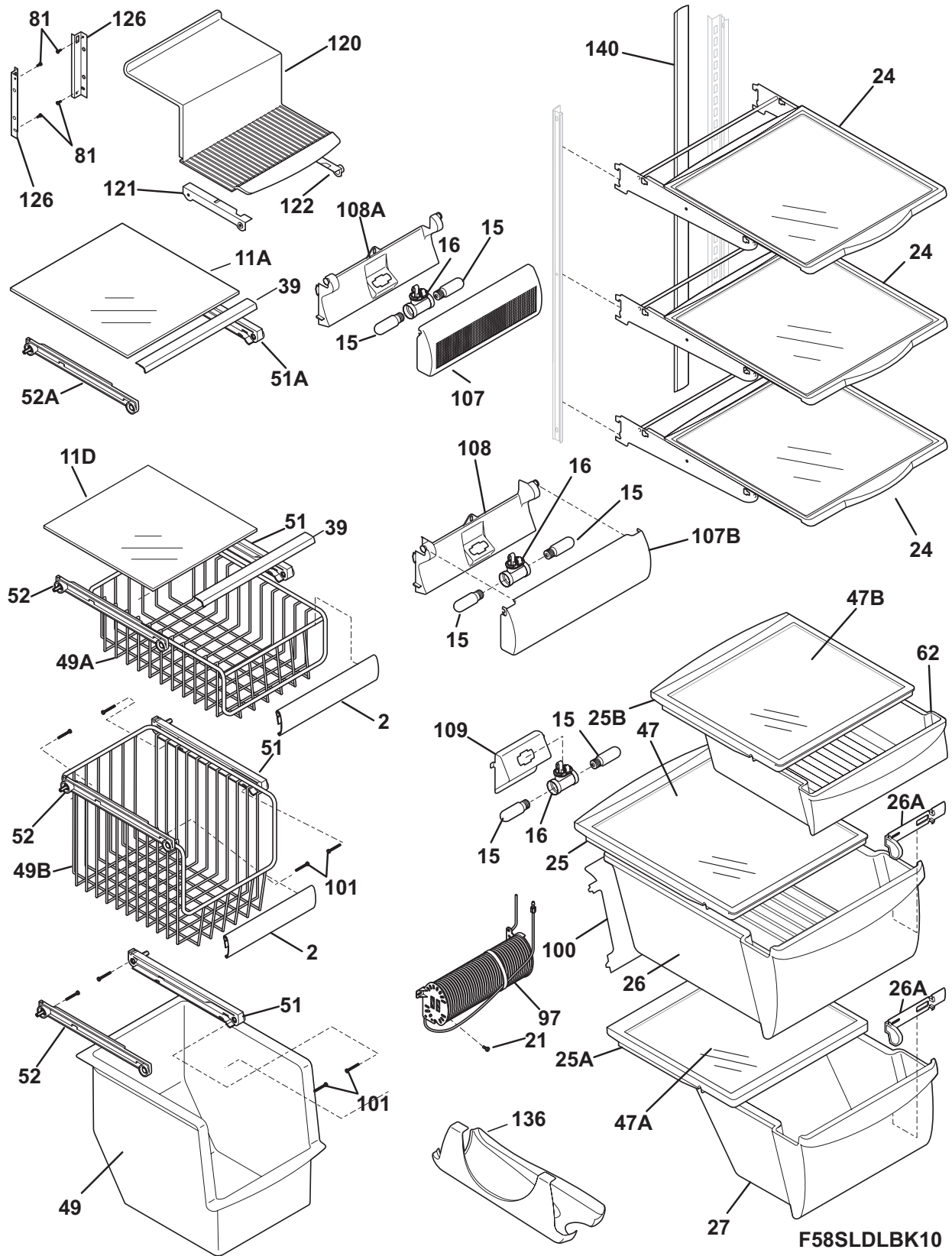
E58BAAAAE0

CABINET

Model Index: A FGHS2369K (FGHS2369KE1)
 B FGHS2369K (FGHS2369KP1)

| POS. NO | PART NO. | | DESCRIPTION |
|---------|------------|-----|--|
| 10 | 240435913 | A B | Cover-air duct |
| 10A | 241719710 | A B | Cover-evap coil, lower |
| 11 | 5303208309 | A B | Plug-hole, factory test |
| 14A# | 241547901 | A B | Switch-light/lamp, frzr door |
| 21C | 218252201 | A B | Screw, #8 truss hd, 10-32CA x 0.500 |
| 21D | 241548003 | A B | Screw, 10-32 x 3/8 |
| 22 | 241917801 | A B | Plate-door closer |
| 22* | 218755402 | A B | Screw-set, 10-32 x 0.375 |
| 28 | 240335502 | A B | Bolt-roller adj, hex washer head, 1/4-20 x 4.020, (2), special |
| 30 | 241917901 | A B | Bracket-lower hinge, RH, w/hinge pin |
| 30A | 241917902 | A B | Bracket-lower hinge, LH, w/hinge pin |
| 37 | 240337610 | A - | Trim-cabinet corner, black, (2) |
| 37 | 240337608 | - B | Trim-cabinet corner, white, (2) |
| 38 | 241761301 | A B | Bracket-upper hinge, RH |
| 38A | 241761302 | A B | Bracket-upper hinge, LH |
| 40 | 241946705 | A - | Cover-upper hinge, black, RH |
| 40 | 241946701 | - B | Cover-upper hinge, white |
| 40* | 241835801 | A B | Harness-wiring |
| 40A | 241946706 | A - | Cover-upper hinge, black, LH |
| 40A | 241946702 | - B | Cover-upper hinge, white, LH |
| 40A* | 241891901 | A B | Harness-wiring, freezer |
| 41 | 241550801 | A B | Grommet-shelf mtg, 1.40" long |
| 41* | 241550701 | A B | Grommet-shelf mtg, .96" long |
| 42 | 240578902 | A B | Screw, hex head, 1/4-20 x 5/8 |
| 43 | 240335006 | A B | Roller Assy, front, (2) |
| 45 | 241500303 | A B | Screw, hex washer head, 8-18AB x 0.500 |
| 47 | 241513001 | A B | Channel-shelf mtg, side, (2) |
| 50 | 242000406 | A B | Board-main power |
| 50* | 241867901 | A B | Harness-wiring |
| 54 | 241532401 | A B | Channel |
| 58 | 218781101 | A B | Screw, pan head, 8-18 x 0.625 |
| 66 | 241756801 | A B | Damper-meat keeper |
| 66* | 241512807 | A B | Seal |
| 66A | 241756901 | A B | Housing-damper |
| 72 | 241972903 | A - | Grille/Kickplate, black |
| 72 | 241972901 | - B | Grille/Kickplate, white |
| 81 | 5304455650 | A B | Screw, hex washer head, 8-15A x 0.625, low profile |
| 82 | 5304418225 | A B | Roller, compressor base, rear, (2) |
| 83 | 5304455655 | A B | Rivet, flat head, 1/4 OD x 1-3/4, roller pin |
| 89 | 241733904 | A B | Cover-access, w/label |
| 90 | 218249807 | A B | Seal-coil cover |
| 92 | 241710601 | A B | Screw, hex washer hd, 1/4 x 7/8, hinge mtg |
| 93 | 241911704 | A - | Switch, plunger style |
| 93 | 241911701 | - B | Switch, plunger style |
| 100 | 240423701 | A B | Support, crisper cover, front, (4) |
| 100* | 240350802 | A B | Support, crisper cover, rear, (4) |
| * | 240396801 | A B | Clamp, tube/wiring, nylon, black/natural |
| * | 241781601 | A B | Seal-return air |
| * | 241852501 | A B | Clip, wiring harness |
| * | 241868101 | A B | Air Guide |
| * | 5303321321 | A - | Paint, touch-up, black |
| * | 5303321319 | - B | Paint, touch-up, white |

SHELVES



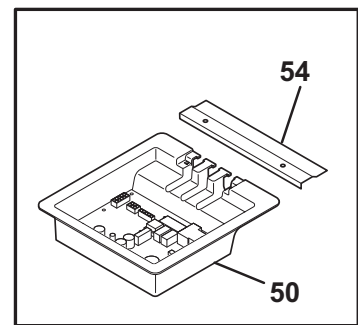
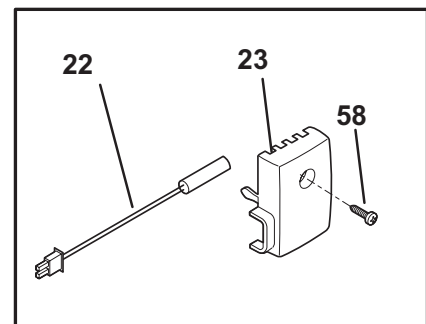
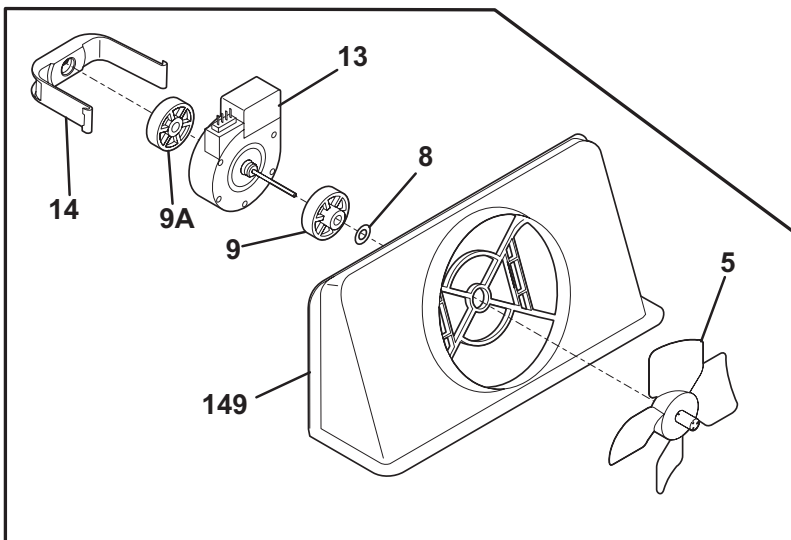
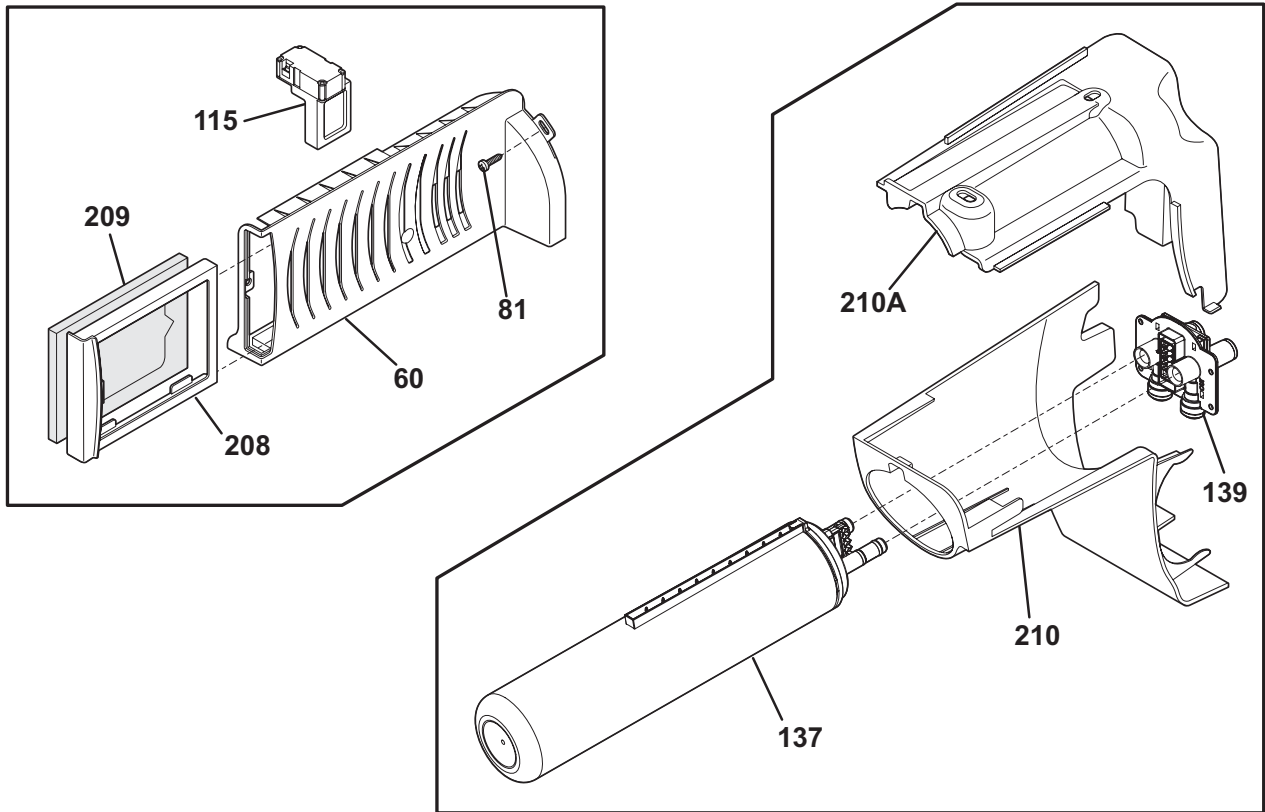
F58SLDLBK10

SHELVES

Model Index: A FGHS2369K (FGHS2369KE1)
 B FGHS2369K (FGHS2369KP1)

| POS. NO | PART NO. | | DESCRIPTION |
|---------|------------|-----|--|
| 2 | 241510609 | A B | Trim-basket |
| 11A | 241992913 | A B | Shelf-freezer, glass, upper |
| 11D | 241992914 | A B | Shelf-freezer, glass, lower |
| 15 | 241552801 | A B | Light Bulb |
| 16 | 241622802 | A B | Socket-light, frz light |
| 16*# | 241797601 | A B | Harness-wiring |
| 21 | 5304455658 | A B | Screw, hx wshr hd sems, 8-15A x 0.625 |
| 24 | 240350142 | A B | Shelf-"Spill-Safe", cantilever, sliding |
| 25 | 241974201 | A B | Cover-crisper pan, upper |
| 25* | 240362101 | A B | Clip-slide, cover-crisper |
| 25A | 241974301 | A B | Cover-crisper pan, lower |
| 25B | 241973101 | A B | Cover-meat pan |
| 26 | 240354727 | A B | Pan-crisper, upper |
| 26* | 240349801 | A B | Clip-slide, pan-crisper |
| 26A | 240351101 | A B | Control-humidity |
| 27 | 240354830 | A B | Pan-crisper, lower |
| 39 | 240367606 | A B | Trim-shelf, front |
| 47 | 241992910 | A B | Insert-pan cover, glass |
| 47A | 240350614 | A B | Insert-pan cover, glass |
| 47B | 241992909 | A B | Insert-pan cover, glass |
| 49 | 240564301 | A B | Basket-sliding |
| 49B | 240530501 | A B | Basket-sliding, upper, half |
| 49B | 240530503 | A B | Basket-sliding, upper, full |
| 51 | 240343002 | A B | Hanger-basket, RH |
| 51A | 240395502 | A B | Hanger-basket, RH |
| 52 | 240343102 | A B | Hanger-basket, LH |
| 52A | 240395602 | A B | Hanger-basket, LH |
| 62 | 241974403 | A B | Pan-meat |
| 81 | 5304455650 | A B | Screw, hex washer head, 8-15A x 0.625, low profile |
| 97 | 241532007 | A B | Water Tank |
| 100 | 240326303 | A B | Cover-water tank |
| 101 | 218493101 | A B | Screw, hex washer head, 8-18AB x 1-3/4 |
| 107 | 241753501 | A B | Shield-light, refr |
| 107B | 241947502 | A B | Shield-light, meat pan |
| 108 | 241513301 | A B | Cover-wiring, meat pan light |
| 108A | 241753701 | A B | Housing-light, upper, fresh food |
| 109 | 241513202 | A B | Base-crisper light socket |
| 120 | 241740701 | A B | Shelf-ice cream |
| 121 | 241561001 | A B | Rail-ice cream shelf, LH |
| 122 | 241561101 | A B | Rail-ice cream shelf, RH |
| 126 | 241674401 | A B | Channel, auger mtg, LH |
| 126 | 241674402 | A B | Channel, auger mtg, RH |
| 136 | 241657701 | A B | Dispenser-can, white |
| 140 | 241812501 | A B | Channel, wtr tube cover |
| * | 241781601 | A B | Seal-return air |
| * | 241868101 | A B | Air Guide |
| * | 241935570 | A B | Energy Guide |

CONTROLS



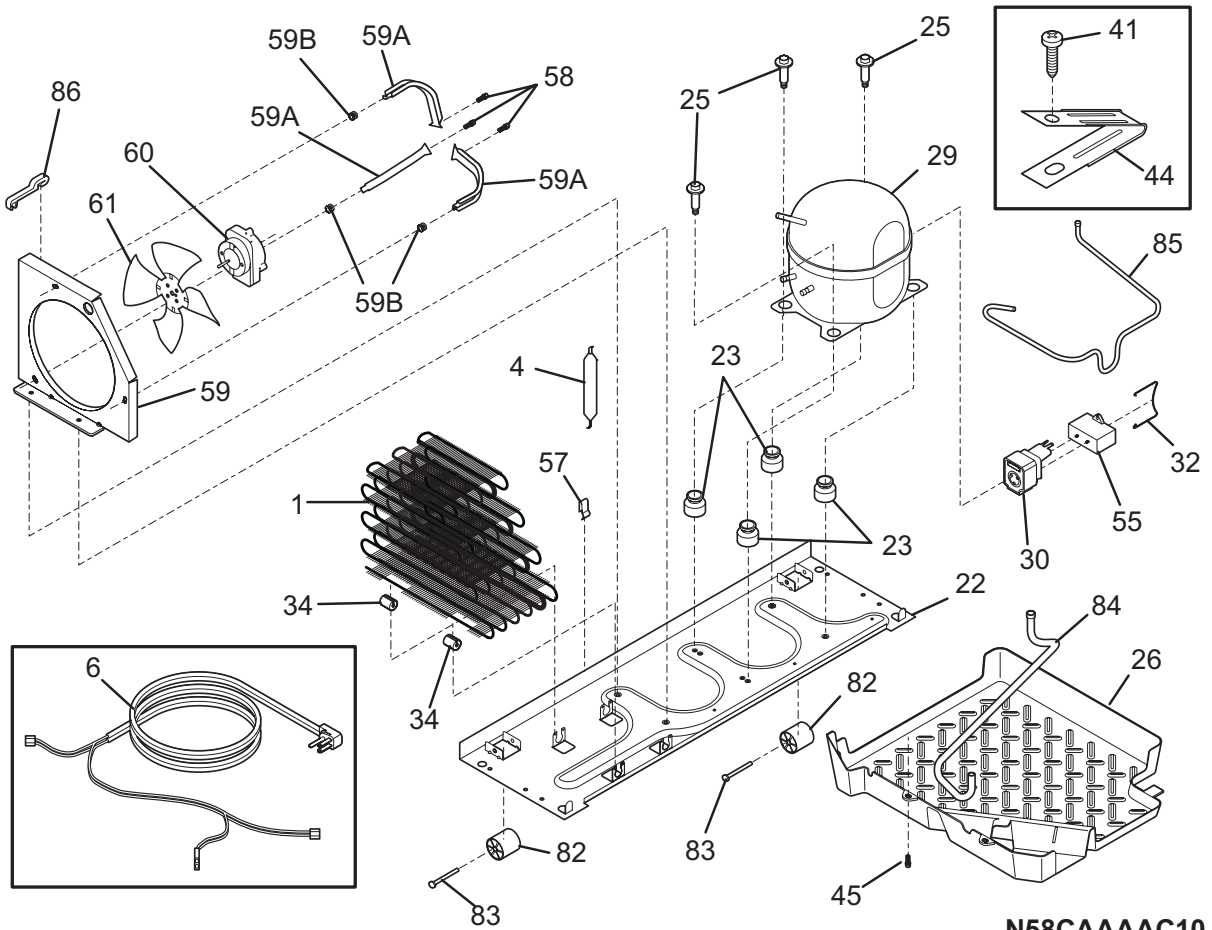
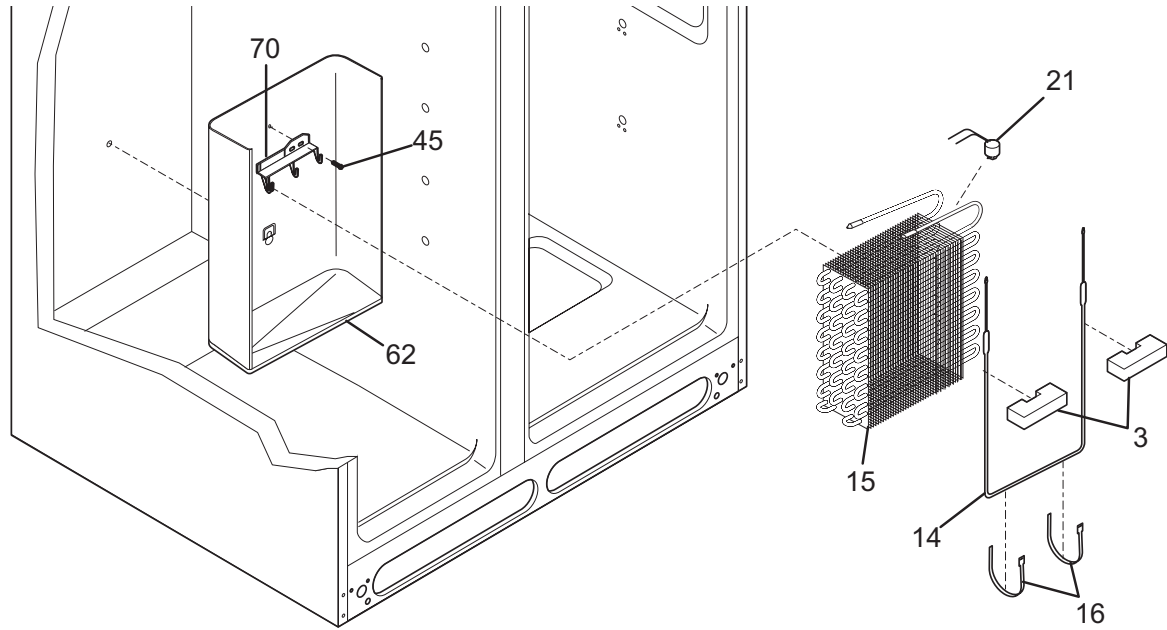
F58TEBCAE0

CONTROLS

Model Index: A FGHS2369K (FGHS2369KE1)
 B FGHS2369K (FGHS2369KP1)

| POS. NO | PART NO. | | DESCRIPTION |
|---------|------------|-----|--|
| 5 # | 5308000010 | A B | Fan Blade, red, evaporator fan |
| 8 | 215474201 | A B | Washer, "slinger", nylon, evap fan shaft |
| 9 | 241563601 | A B | Bushing-motor mtg |
| 9A | 241845301 | A B | Bushing-motor mtg |
| 13 | 241509402 | A B | Motor, evaporator fan |
| 14 | 241517701 | A B | Clip, evap fan motor |
| 22 | 240597203 | A B | Sensor |
| 23 | 241845401 | A B | Housing-sensor |
| 50 | 242000406 | A B | Board-main power |
| 50* | 241867901 | A B | Harness-wiring |
| 54 | 241532401 | A B | Channel |
| 58 | 5304455650 | A B | Screw, hex washer head, 8-15A x 0.625, low profile |
| 60 | 242010601 | A B | Housing-diffuser & air filter |
| 60* | 241945101 | A B | Insulation-air duct |
| 81 | 5304455658 | A B | Screw, hx wshr hd sems, 8-15A x 0.625 |
| 115 | 241853801 | A B | Damper Assy, w/seal |
| 137 | 241791601 | A B | Filter-water, carbon |
| 139 | 242009601 | A B | Base-water filter |
| 149 | 241563401 | A B | Shroud-fan orifice |
| 149* | 241528305 | A B | Seal, shroud |
| 208 | 241754301 | A B | Sleeve, air filter, front |
| 209 | 241754002 | A B | Filter-air |
| 210 | 241983801 | A B | Housing-water filtr |
| 210A | 241998301 | A B | Mount-water filter |
| * | 3205266 | A B | Edge Protector, wiring harness |
| * | 241852501 | A B | Clip, wiring harness |

SYSTEM



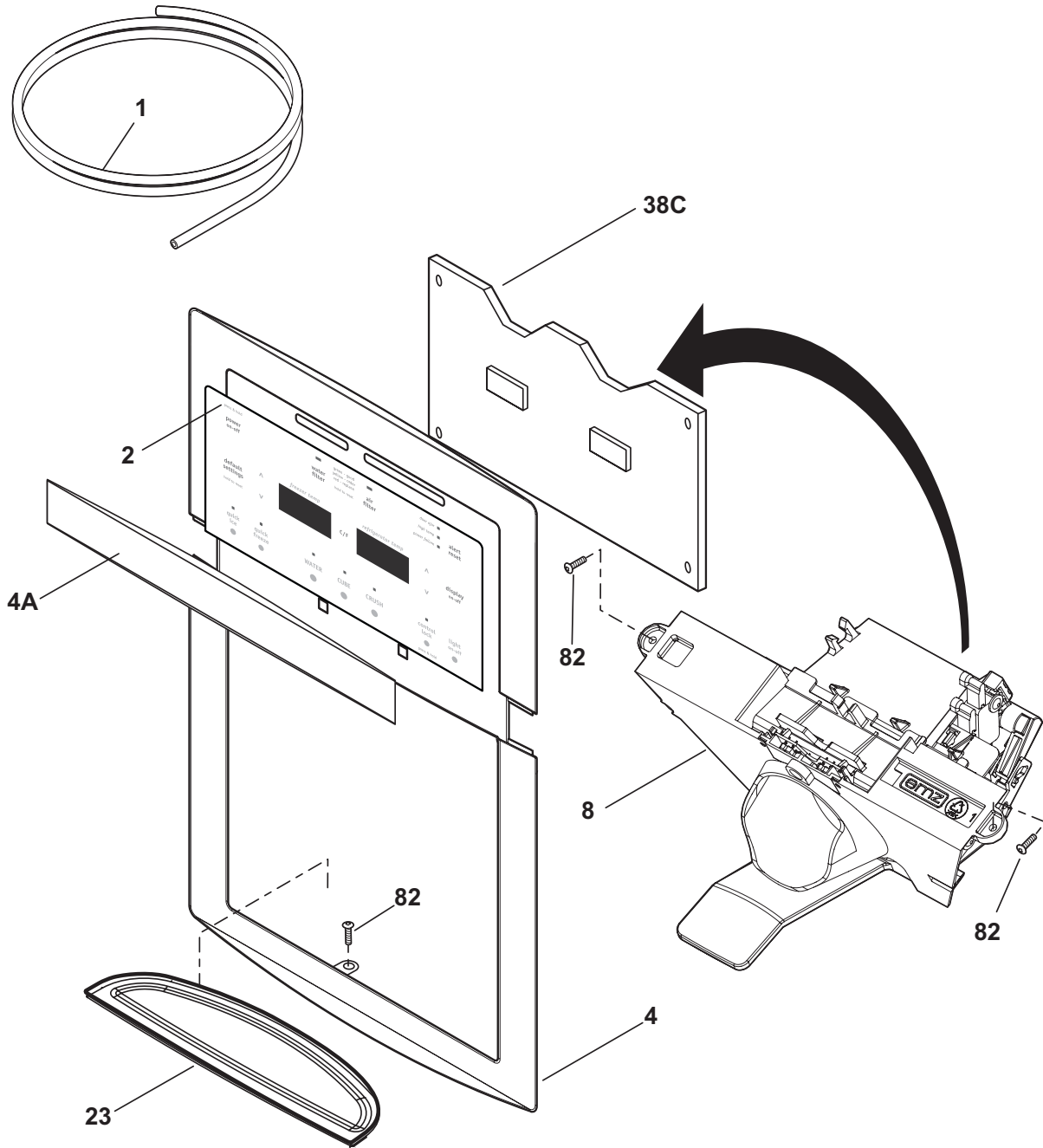
N58CAAAC10

SYSTEM

Model Index: A FGHS2369K (FGHS2369KE1)
B FGHS2369K (FGHS2369KP1)

| POS. NO | PART NO. | | DESCRIPTION |
|---------|------------|-----|--|
| 1 | 240333602 | A B | Condenser |
| 3 | 218679606 | A B | Block-evap coil, styrofoam, (2) |
| 4 # | 218944001 | A B | Drier-filter, R134a System |
| 6 # | 241516901 | A B | Cord-service |
| 6* # | 241834802 | A B | Harness-wiring, machine compt |
| 6* # | 241519902 | A B | Harness-wiring |
| 14 # | 240316107 | A B | Heater-defrost |
| 15 # | 5303918286 | A B | Evaporator Kit |
| 16 | 5308000110 | A B | Strap-evap/heater, aluminum, (2) |
| 21 | 5303918214 | A B | Thermostat-defrost, kit |
| 22 | 240330010 | A B | Base-compressor |
| 22* | 218252201 | A B | Screw, #8 truss hd, 10-32CA x 0.500 |
| 23 | 241659701 | A B | Grommet, compressor |
| 25 | 240491503 | A B | Screw-compressor mtg, 1/4-28 x 1.16, (4) |
| 26 | 241697602 | A B | Pan-defrost |
| 29 # | 5303918359 | A B | Compressor, w/o electricals |
| 30 # | 241707712 | A B | Starter, PTC |
| 32 | 241650901 | A B | Clamp, elec cont mtg, compressor |
| 34 | 240405201 | A B | Grommet, rubber, black, cond tube/wire |
| 41 | 240555002 | A B | Screw-#8-32 X 3/8 |
| 44 | 215174700 | A B | Clamp-service cord, strain relief, galv steel |
| 45 | 5304455650 | A B | Screw, hex washer head, 8-15A x 0.625, low profile |
| 55 | 218909913 | A B | Capacitor, run, 220 VAC, 15 microfarad |
| 58 | 240569201 | A B | Screw, 8-18 x 0.500 |
| 59 | 240315506 | A B | Shroud, cond fan motor |
| 59* | 240346701 | A B | Tape-foam seal, shroud |
| 59* | 240359403 | A B | Screw-fan shroud, (2) |
| 59A | 240346501 | A B | Bracket-support, cond mtr, (3) |
| 59B | 240346601 | A B | Grommet-bracket, (3) |
| 60 | 241584301 | A B | Motor-condenser fan |
| 61 | 241639501 | A B | Blade-condenser fan |
| 62 | 240429401 | A B | Trough-drain |
| 70 | 218990801 | A B | Bracket-evap/cvr mtg |
| 82 | 5304418225 | A B | Roller, compressor base, rear, (2) |
| 83 | 5304455655 | A B | Rivet, flat head, 1/4 OD x 1-3/4, roller pin |
| 84 | 241957901 | A B | Tube-drain, lower |
| 85 | 241844801 | A B | Tube-connector, suction |
| 86 | 240409302 | A B | Spacer-cond tube, black |
| * | 241852501 | A B | Clip, wiring harness |
| * # | 5303918328 | A B | Heat Exchanger Kit, suction line, service |
| * | 5303918222 | A B | Hot Tube Repair Kit, service |

ICE & WATER DISPENSER



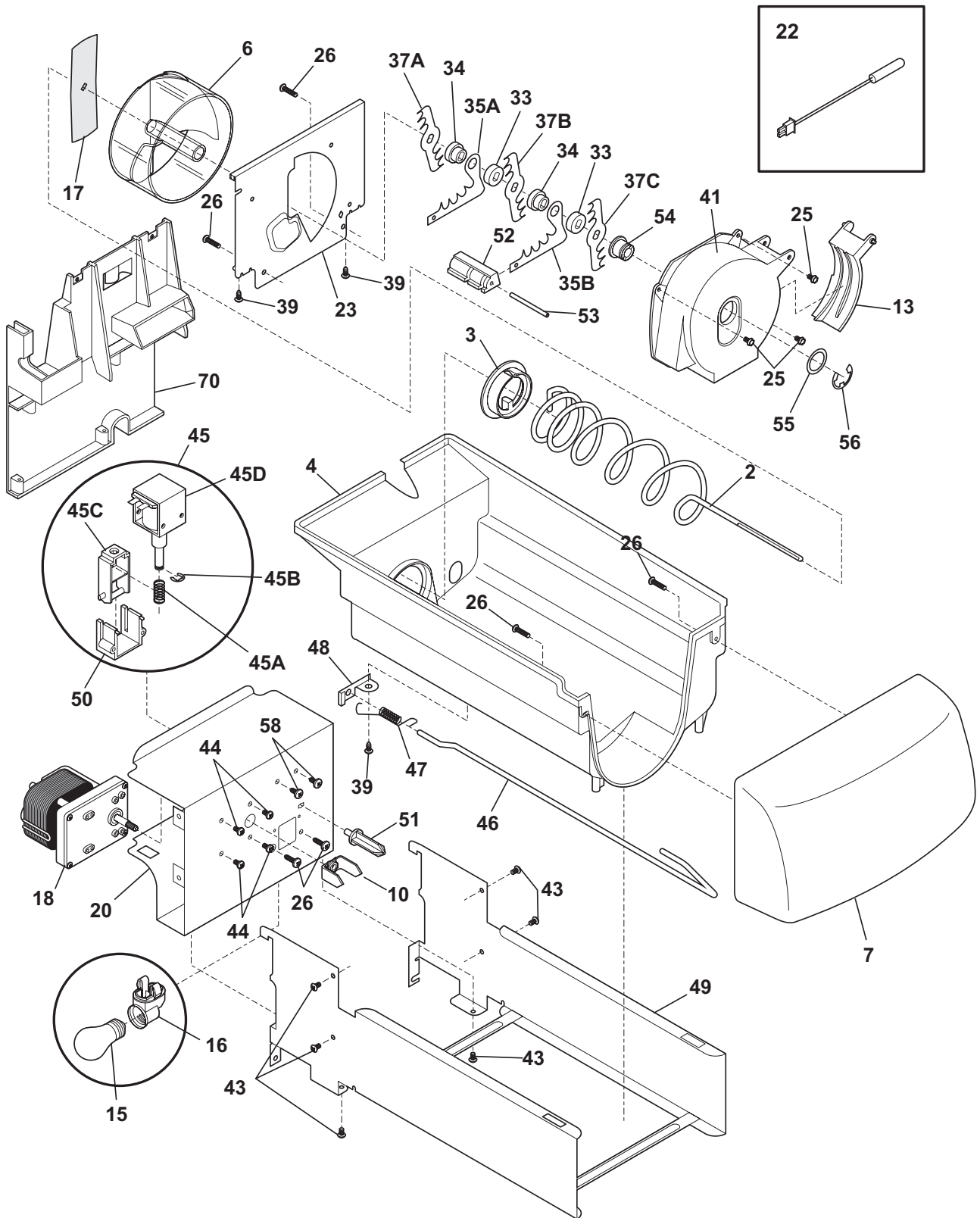
F58XFAAAA0

ICE & WATER DISPENSER

Model Index: A FGHS2369K (FGHS2369KE1)
 B FGHS2369K (FGHS2369KP1)

| POS. NO | PART NO. | | DESCRIPTION |
|---------|------------|-----|---|
| 1 | 218976419 | A B | Tube-water inlet, valve to door |
| 1* | 218976429 | A B | Tube-water inlet, 97.50", brown/tan |
| 1* | 218976915 | A B | Tube-water inlet, inlet valve, to filter |
| 1* | 240561703 | A B | Seal-water inlet, inlet valve, to ice maker |
| 2 | 241973813 | A - | Switch Assembly, overlay, black |
| 2 | 241973814 | - B | Switch Assembly, overlay, white, top |
| 4 | 241946803 | A - | Cover-module, black |
| 4 | 241946801 | - B | Cover-module, white |
| 4A | 241946901 | A B | Trim, Facade |
| 8 | 241753413 | A B | Module-dispenser, clear |
| 23 | 241947003 | A - | Drip Tray, black |
| 23 | 241947001 | - B | Drip Tray, white |
| 38C# | 241973703 | A B | Board-control |
| 82 | 240363402 | A B | Screw-#8-18 X 1/2, #6 hd plask |
| * | 5303918371 | A B | Dispenser heater kit, 115 |

ICE CONTAINER



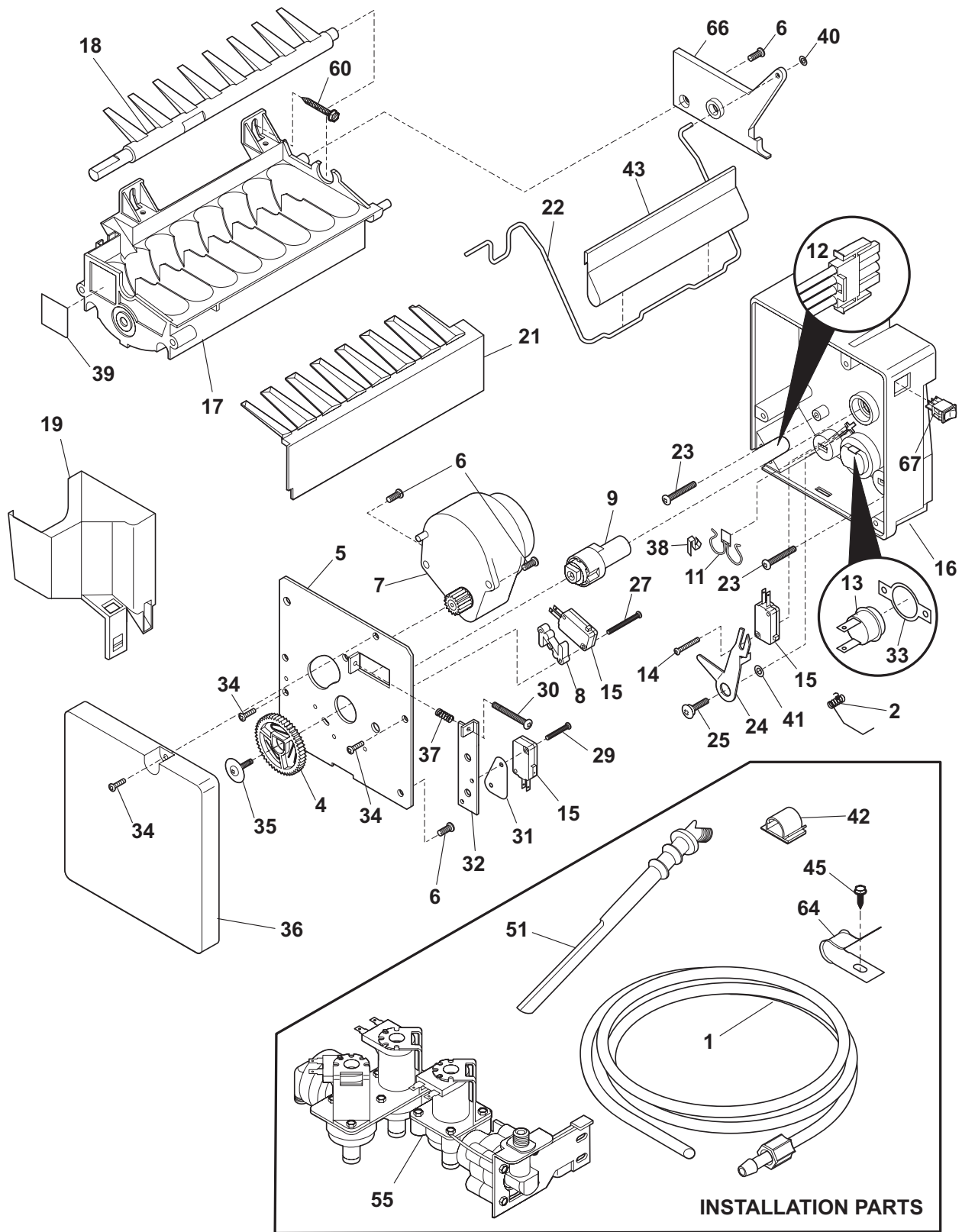
N58YDAAAC5

ICE CONTAINER

Model Index: A FGHS2369K (FGHS2369KE1)
B FGHS2369K (FGHS2369KP1)

| POS. NO | PART NO. | | DESCRIPTION |
|---------|-----------|-----|---------------------------------------|
| 2 | 241716101 | A B | Auger-ice |
| 3 | 241685201 | A B | Cam-drive |
| 4 | 241561302 | A B | Container-ice, bucket only |
| 6 | 241685101 | A B | Drum-ice disp |
| 7 | 241561402 | A B | Front-ice container |
| 10 | 241726501 | A B | Bar-drive |
| 13 | 241685301 | A B | Gate |
| 15 | 241555401 | A B | Light Bulb |
| 16 | 241559801 | A B | Socket-light |
| 17 | 241684501 | A B | Drive Blade |
| 18 # | 241676201 | A B | Motor-auger |
| 18* | 241522901 | A B | Harness-wiring, icmkr/container |
| 20 | 241734702 | A B | Cover-motor |
| 22 | 240597203 | A B | Sensor |
| 22* | 241519401 | A B | Clip, sensor |
| 23 | 241684001 | A B | Plate-front |
| 25 | 241690701 | A B | Screw, hex washer head, 8-32T x 0.375 |
| 26 | 215503203 | A B | Screw, cr pan hd, 10-16 x 0.500 |
| 33 | 241684801 | A B | Spacer |
| 34 | 241689801 | A B | Spacer |
| 35A | 241684301 | A B | Fixed Blade, round |
| 35B | 241684201 | A B | Fixed Blade, square |
| 37A | 241684101 | A B | Blade, crusher #1 |
| 37B | 241684102 | A B | Blade, crusher #2 |
| 37C | 241684103 | A B | Blade, crusher #3 |
| 39 | 241690501 | A B | Screw |
| 41 | 241685601 | A B | Housing-crusher |
| 43 | 218359202 | A B | Screw, pan head, 8-32 x 0.250 |
| 44 | 241842101 | A B | Screw, 8-32 x 1/4 |
| 45 | 241675701 | A B | Solenoid Assy, 115V |
| 45A | 241675901 | A B | Spring-solenoid |
| 45B | 241676001 | A B | E-Ring-solenoid |
| 45C | 241676101 | A B | Actuator-solenoid |
| 45D | 241675801 | A B | Solenoid, 115V |
| 46 | 241716002 | A B | Control Rod |
| 47 | 241731801 | A B | Spring-control rod |
| 48 | 241684602 | A B | Bracket-control rod |
| 49 | 241734401 | A B | Rail Assy |
| 50 | 241675601 | A B | Guide-solenoid |
| 51 | 241676301 | A B | Rotation Stop |
| 52 | 241684901 | A B | Spacer-fixed blades |
| 53 | 241690402 | A B | Pin-spiral, fixed blades |
| 54 | 241685001 | A B | Nut-auger |
| 55 | 241690306 | A B | Washer |
| 56 | 241690201 | A B | E-ring |
| 70 | 241561501 | A B | Plate-mounting |
| 70* | 215005101 | A B | Screw, hanger/r/r mtg, 8-10 x 7/16 |
| 70* | 241551602 | A B | Screw, hex head, 8-18B x 0.875 |
| 70* | 241716801 | A B | Clip |
| * | 218817300 | A B | Shield-light |
| * | 241860810 | A B | Ice Container Assy, w/moving parts |

ICE MAKER



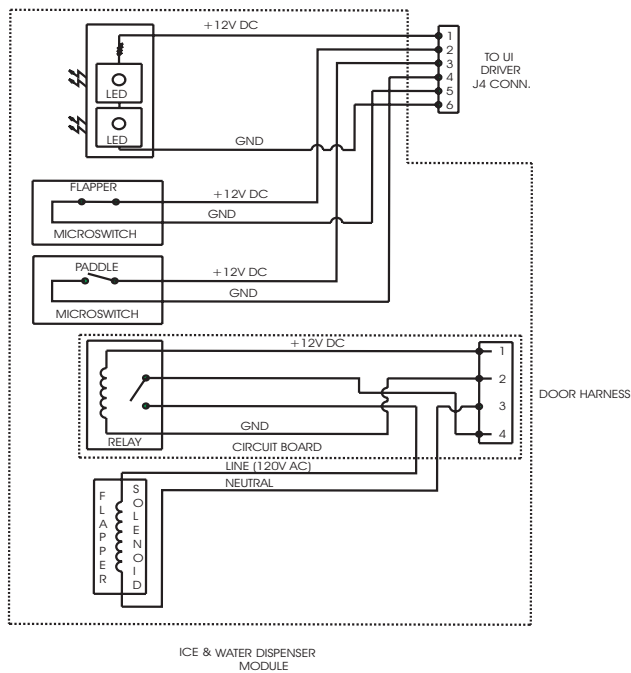
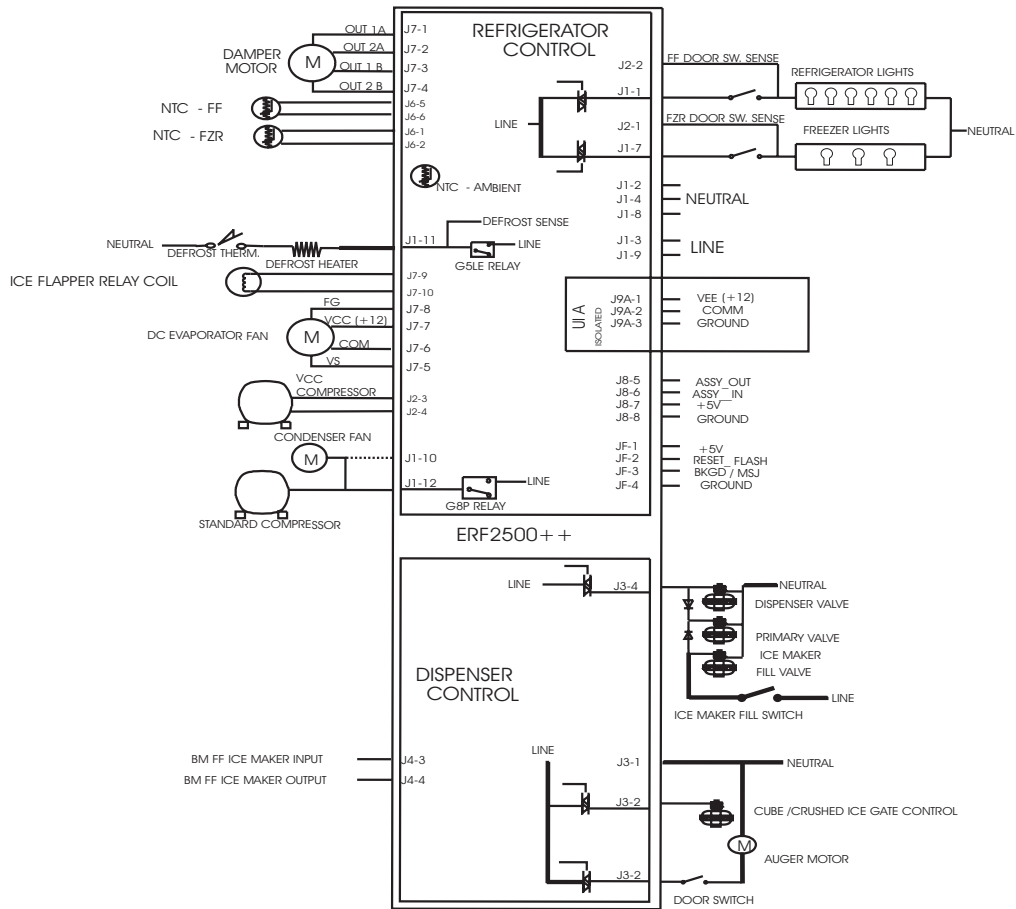
N581115TServo

ICE MAKER

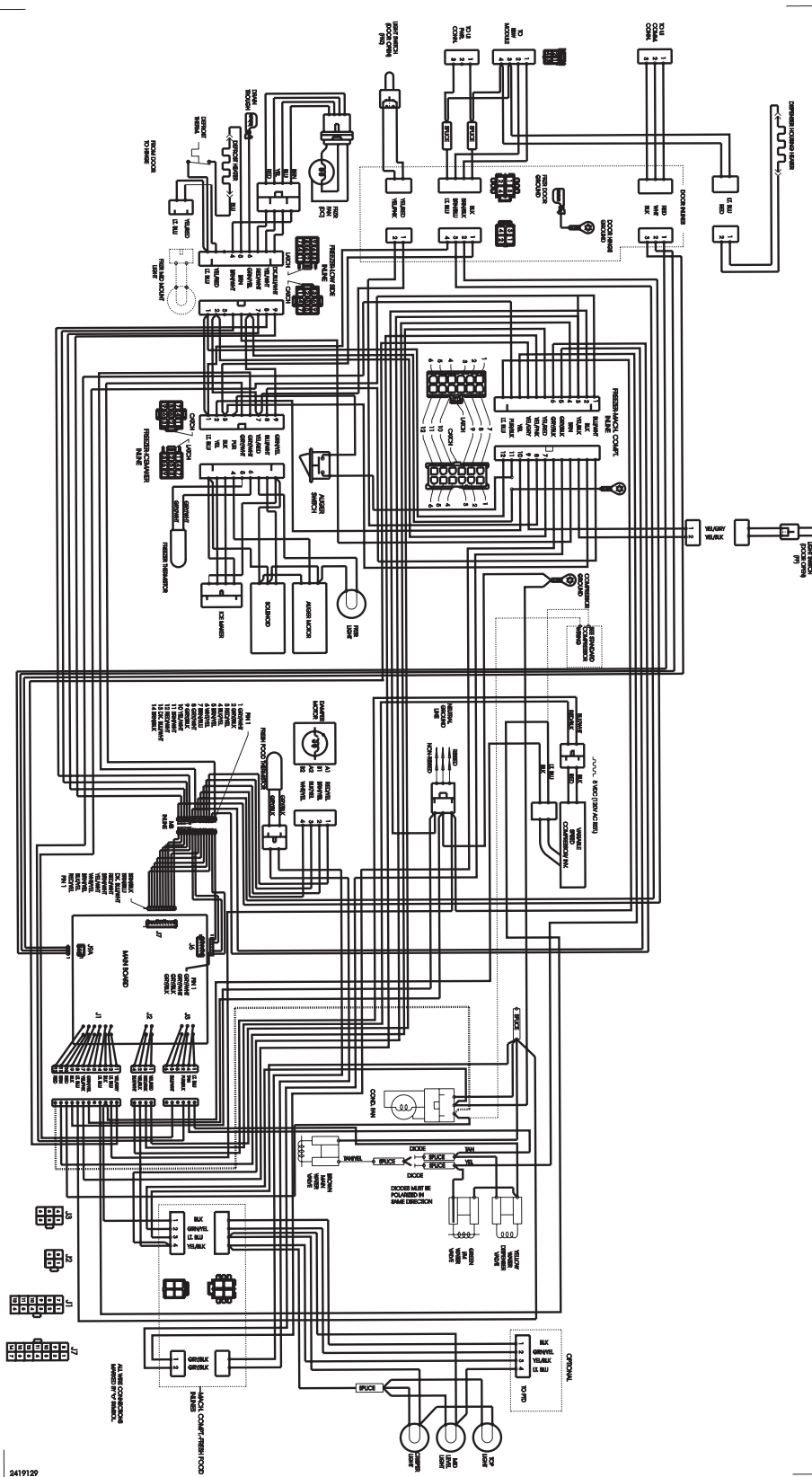
Model Index: A FGHS2369K (FGHS2369KE1)
B FGHS2369K (FGHS2369KP1)

| POS. NO | PART NO. | | DESCRIPTION |
|---------|------------|-----|---|
| 1 | 218976419 | A B | Tube-water inlet, valve to door |
| 1* | 218976429 | A B | Tube-water inlet, 97.50", brown/tan |
| 1* | 218976915 | A B | Tube-water inlet, inlet valve, to filter |
| 1* | 240561703 | A B | Seal-water inlet, inlet valve, to ice maker |
| 2 | 5304436616 | A B | Spring, torsion |
| 4 | 5304458380 | A B | Gear |
| 5 | 5304458383 | A B | Plate-mounting |
| 6 | 5304458386 | A B | Screw |
| 7 # | 5304458382 | A B | Motor-ice maker Svo |
| 8 | 5304458388 | A B | Spacer-hold switch |
| 9 | 5304456662 | A B | Cam |
| 11 # | 5304458400 | A B | Thermal Cutoff, ice maker |
| 12 | 5304458379 | A B | Harness-wiring |
| 13 | 5304456665 | A B | Thermostat, ice maker |
| 14 | 5304458384 | A B | Screw |
| 15 # | 5304456667 | A B | Switch-micro, (3) |
| 16 | 5304458395 | A B | Housing, control |
| 17 | 5304456669 | A B | Mold-ice maker, w/therm cut off |
| 18 | 5304458377 | A B | Ejector-ice |
| 18* | 241522901 | A B | Harness-wiring, icmkr/container |
| 19 | 5304458378 | A B | Cup-water inlet |
| 21 | 5304458390 | A B | Ice Stripper |
| 22 | 5304458375 | A B | Shut-off Arm |
| 23 | 5304458394 | A B | Screw |
| 24 | 5304458391 | A B | Lever Arm |
| 25 | 5304456676 | A B | Screw, M 4x12.8 #2, lever arm/sprt |
| 27 | 5304458385 | A B | Screw |
| 29 | 5304458393 | A B | Screw |
| 30 | 5304458387 | A B | Screw |
| 31 | 5304458381 | A B | Insulator |
| 32 | 5304456681 | A B | Plate-valve switch |
| 33 | 5304456682 | A B | Spring, timing adjust |
| 34 | 5304455684 | A B | Screw, plazscrew, 8-10 x 1/2, (3) |
| 35 | 5304456684 | A B | Screw |
| 36 | 5304458376 | A B | Cover-ice maker |
| 37 | 5304408583 | A B | Spring-timing adj |
| 38 | 5304458398 | A B | Clip |
| 39 | 5304458399 | A B | Conductor-heat |
| 40 | 5304458401 | A B | Clip-retainer |
| 41 | 5304456689 | A B | Washer, nylon |
| 42 | 218515403 | A B | Clip-grille |
| 43 | 241720601 | A B | Extension |
| 45 | 5304455650 | A B | Screw, hex washer head, 8-15A x 0.625, low profile |
| 51 | 241796403 | A B | Tube-water fill, extension |
| 55 # | 241734301 | A B | Valve-water, triple solenoid |
| 55* | 218709101 | A B | Screw, hex head, 10-32 x 0.500 |
| 55* | 240363602 | A B | Screw-shoulder |
| 60 | 218362501 | A B | Screw, hex washer head, 8-18AB x 1.250, spacer, (2) |
| 64 | 5304455846 | A B | Clamp, .31 ID, steel, water tube |
| 66 | 5304458374 | A B | Bracket-ice maker |
| 67 | 5304458392 | A B | Switch-on/off |
| * | 240352102 | A B | Connector-water, straight |
| * | 241583301 | A B | Deflector-air, ice maker |
| * | 241587402 | A B | Deflector-ice |
| * # | 241709801 | A B | Ice Maker, radius cube, 115 V, no instl parts |

WIRING SCHEMATIC



WIRING DIAGRAM



2419129