

This Data Sheet Includes Information On

**Maytag**

Product Model Number (s):

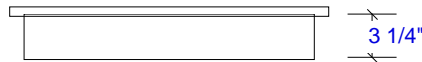
Electric Cooktops:  
MEC4430AAQ, MEC4430AAB, MEC4430AAC and  
MEC4430AAW

Dimensions (Actual Size)

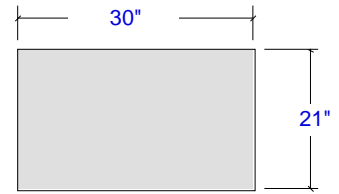
- Overall width: 30"
- Overall depth: 21"
- Distance from countertop to bottom of unit: 3 1/4"
- Cut-Out width: 28 5/16"
- Cut-Out depth: 19 5/8"
- Minimum spacing to nearest vertical combustible wall to the RIGHT: 2 1/2"
- Minimum spacing to nearest vertical combustible wall to the LEFT: 5 1/2"
- Minimum spacing to nearest vertical combustible wall to the REAR: 1 3/4"
- Minimum spacing to front edge of counter: 2 1/2"
- Minimum distance between cooktop and cabinet directly above: 30"
- Minimum width of cabinet directly above: 30"
- Maximum depth of cabinets directly above and adjacent: 13"
- Minimum distance between countertop and adjacent cabinet above: 18"

**Additional Information**

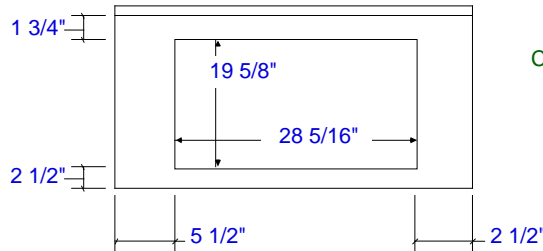
- Designed to fit in a standard 30" wide cabinet and 25" deep countertop.
- Minimum distance from top of counter to combustible material below is 3 1/2".
- Minimum spacing between two individual built-in surface units is 4 1/4".
- Electrical requirements: 120/240 volts 60 Hz protected by a 30 amp grounded fuse or compatible circuit breaker. Minimum wire size is 8 gauge. Copper wire only. Unit is supplied with a 36" long cable. Locate junction box in accessible location in opening below cooktop (4" minimum below countertop). Individual branch circuit serving the cooktop is recommended.



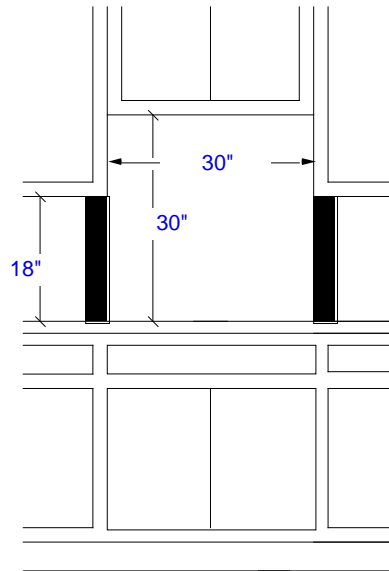
Side View (not to scale)



Overall Dimensions  
Top View (not to scale)



Cut-Out Dimensions  
Countertop View  
(not to scale)



Cabinet Requirements  
Wall View  
(not to scale)

Requires 18" high by 2 1/2" wide clearance to any combustible surface above the cooktop to the right side and 5 1/2" wide clearance to any combustible surface above the cooktop to the left side. (noted by solid area)

Subject to change without notice. This system is designed to be updated daily if necessary. Dimension Express is not responsible for use of superseded, voided, or outdated data sheets. Because of the difficulty or impracticability of determining actual damages, liability of Dimension Express shall not exceed \$50.00.

Copyright © Dimension Express, 2002.

252

• NEVER reuse Data Sheets. Data Sheets are subject to change without notice. Dimension Express is a FREE service bureau and is updated daily, it makes far more sense to spend the time necessary to request new Data Sheets for each project, as opposed to the problems, time, costs, and risks associated with reusing old Data Sheets.

- Call Dimension Express if you have any questions at (775) 833-3633 •
- Always refer to a current Code at a Glance or manufacturer directory •
- Data Sheet codes change on the first of odd numbered months at 12:01am •

BN • A252 • • 032603 • 95656 • 30851