



Frigidaire

Factory Parts Catalog

Product No.	FES367FCA
	37954386K60S1
Series	30" slide-in
Color	stainless
Market	North America
Wiring Diagram	318271907
Owner's Guide	318203859
Installation Instructions	318201611
Timer Guide	318200185

 **Electrolux**

Electrolux Major Appliances
North & Latin America
P.O. BOX 212378
AUGUSTA, GA 30917

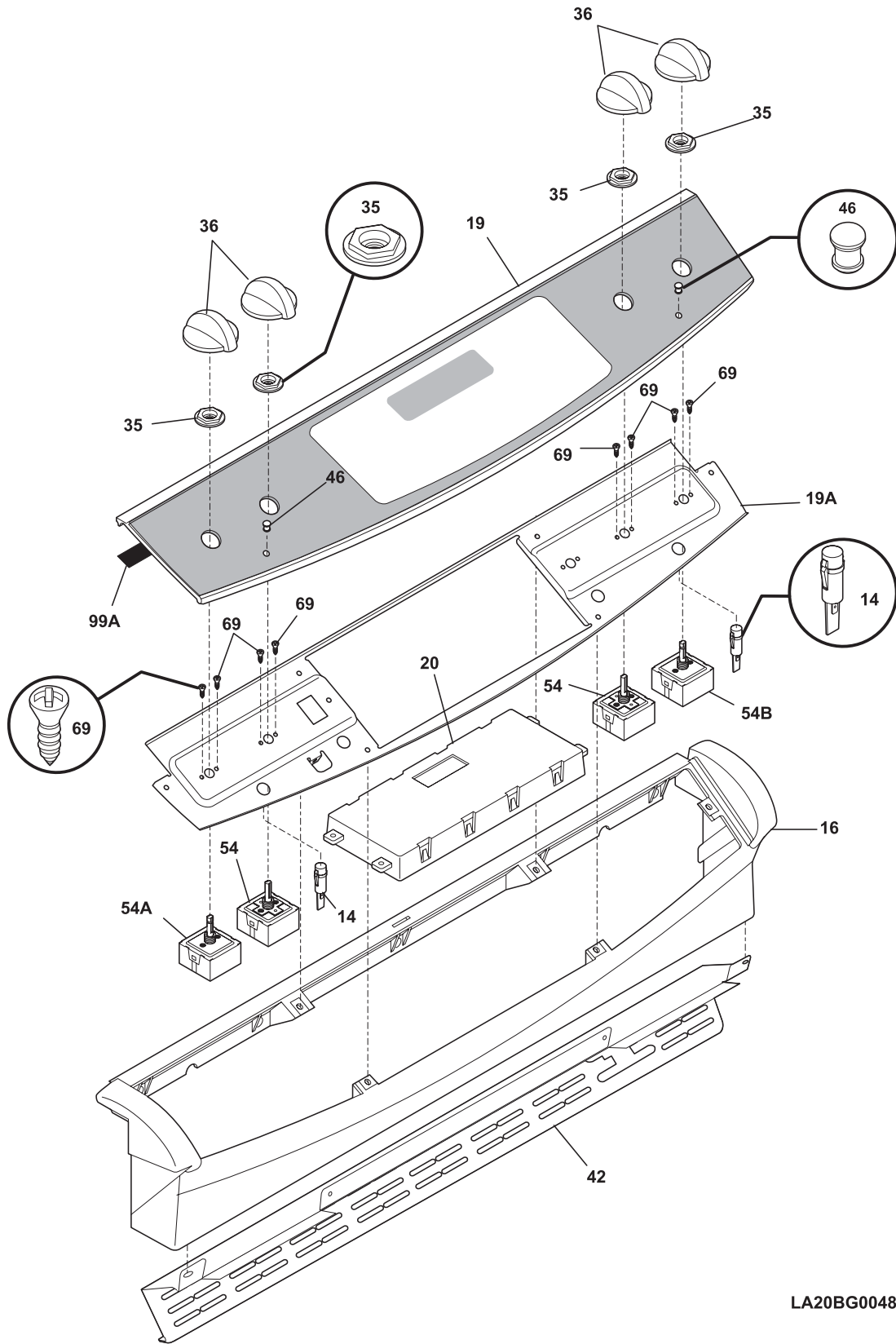
Publication No.
5995470183
06/07/18
(EN/SERVICE/ECL)
377

**30-INCH SLIDE-IN
ELECTRIC RANGE**

Model No.
FES367F

Copyright © 2006 Electrolux Home Products, Inc.
All rights reserved.

BACKGUARD

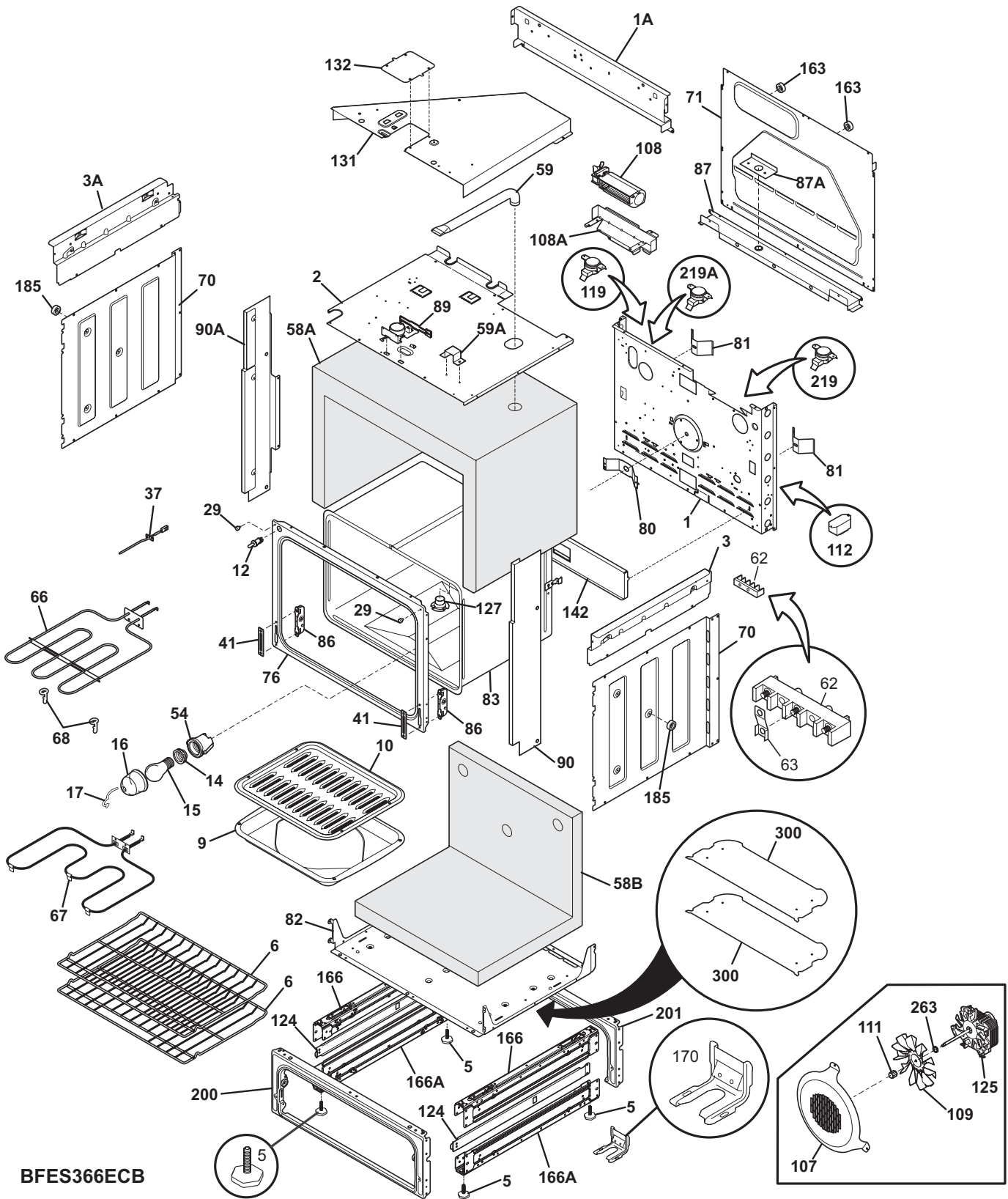


LA20BG0048

BACKGUARD

POS. NO	PART NO.	DESCRIPTION
14 #	318293900	Light, indicator, 125v, (2)
16	318299102	Console, assy., black
19	318312230	Control Panel Assembly, w/membrane, stainless
19A	318224403	Panel, control mtg.
20 #	316418530	Clock/Timer, electronic, ES350
20*	5304453707	Screw, control mtg.
35	318183100	Support, glass, black
36	316223027	Knob, control, black
42	318298001	Trim, vent, black, upper
46	318228300	Lens, indicator light
54 #	318220080	Switch, surface unit, single
54A#	318220081	Switch, surface unit, large
54B#	318191027	Switch, infinite, dual
69	5303323134	Screw, 8-32 x 0.188
99A	318223900	Gasket, dark grey
* #	318228817	Harness, wiring, main, backguard
* #	318224815	Harness, wiring, infinite switch
* #	318224811	Harness, wiring, timer
*	08016432	Screw, truss head, 8-18 x 0.375
*	5303300265	Screw, 8-18 X 1/2, (2)
*	5303311333	Screw, 8-32 x 3/8

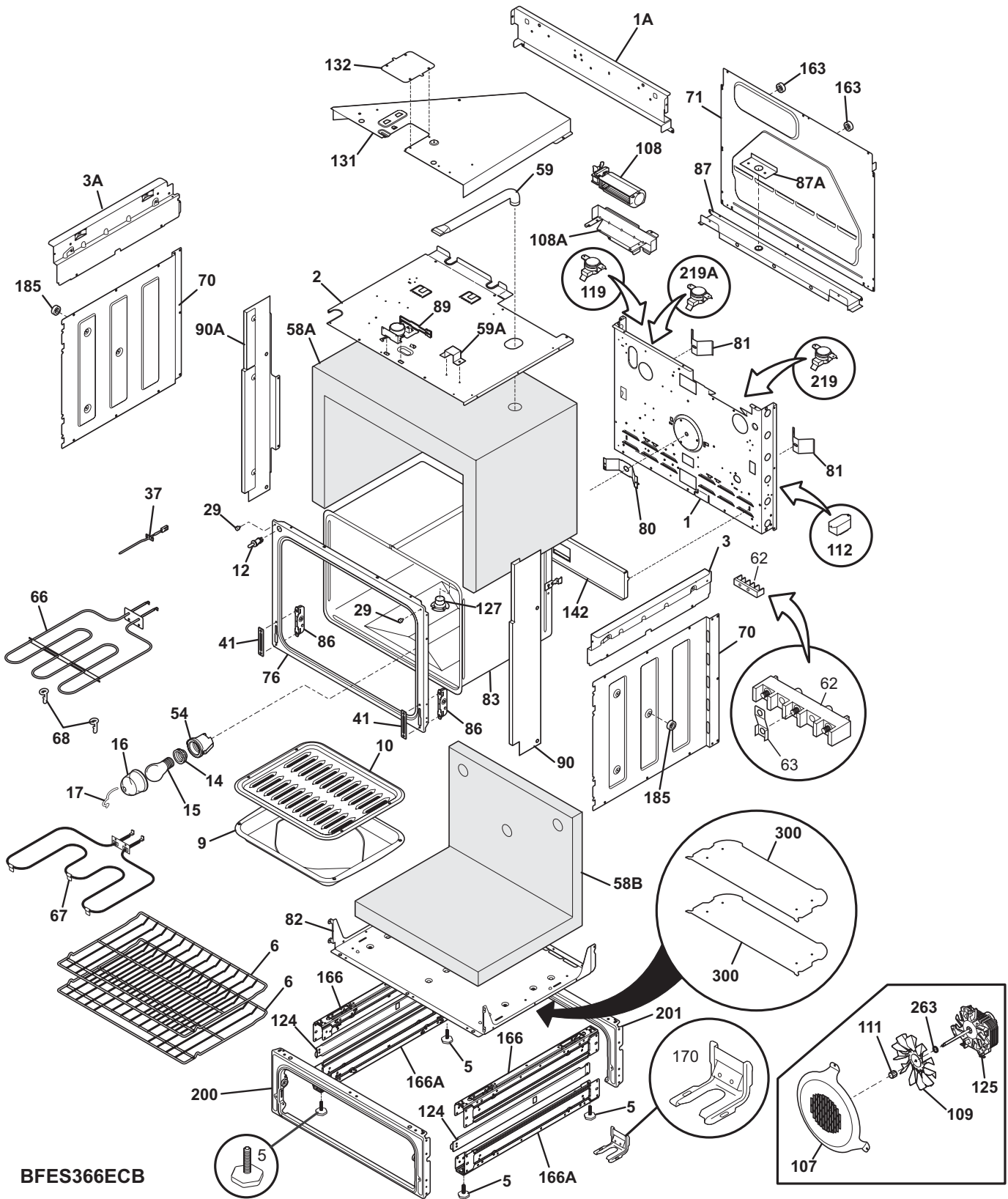
BODY



BODY

POS. NO	PART NO.	DESCRIPTION
1	318259204	Back, main
1A	318225110	Panel, main back, upper
2	318258902	Shield, insulation, upper
3	318225210	Panel, bodyside, upper RH
3A	318225211	Panel, bodyside, upper LH
5	318175503	Screw, leveling
6	318345207	Rack, oven
9	5303317977	Pan, broiler
10	5303317976	Insert, broiler pan
12 #	318089917	Switch, light
14	318224000	Receptacle, oven light
15	5303013071	Bulb/Lamp, light
16	08011086	Lens, oven light, glass
17	5304400195	Retainer, light cover
29	318147411	Bumper, (2)
37 #	316217002	Probe, oven temp
41	5303310526	Cover, hinge cutout
54	318222400	Housing, oven light
58A	318285055	Insulation, oven wrapper
58B	318285056	Insulation, oven back
59	318072560	Duct, oven vent
59A	318261600	Bracket, vent tube
62	5303935061	Terminal Block Kit
62*	5303323139	Screw, 10-24 x 0.906
62*	5303323144	Nut, 10-32
63	318264200	Plate, grounding strap
66 #	318255600	Element, broil, 2750W
67 #	318255401	Element, bake, 3400W
68	5304403015	Support, hanger, (2), broil element
70	318259100	Shield, insulation, sides, (2)
71	318260007	Panel, rear box
76	318056217	Front, oven
80	5303320846	Plate, oven mtg
81	318192400	Spring, oven
*	5303323129	Screw, 8 X 0.750
82	318258707	Shield, insulation, lower
83	318261404	Liner, oven assy
86	5303310524	Receptacle, hinge
87	318260608	Bracket, cable mtg.
87A	318111804	Plate, cord set mtg
89 #	318261209	Motor, latch assy
*	5304436875	Screw, 8-18 X 1/2, black
90	318296904	Panel, filler, black, RH
90A	318296905	Panel, filler, black, LH
107	318219401	Cover, fan
108#	318073018	Motor, blower
*	318249401	Tube, protector
108A	318251300	Bracket, fan support
109	316136400	Blade, fan
111	316136600	Nut, fan retainer
112#	318112703	Relay

BODY

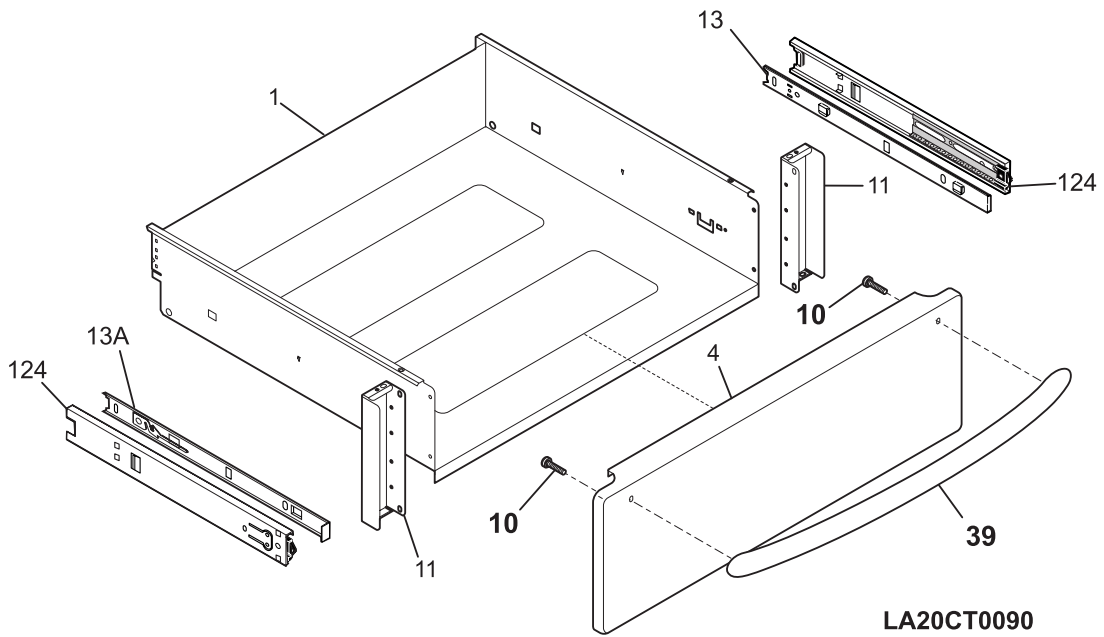
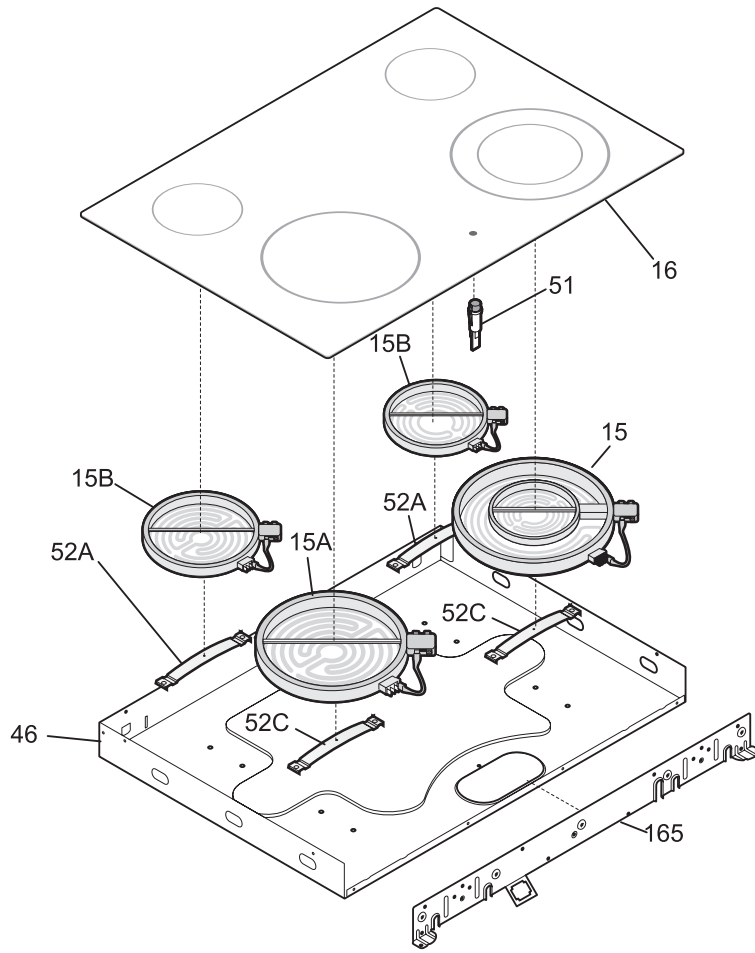


BFES366ECB

BODY

POS. NO	PART NO.	DESCRIPTION
119#	318005202	Switch, thermal cutout
124	318300800	Bracket, glide, (2)
125*	5303316994	Insulation, 3.81 x 3.13
125#	316415800	Motor, fan
127	318317100	Adapter Assembly, vent tube, w/converter
131	318272900	Box, vent
132	318003000	Plate, shield
142	318123910	Deflector
163	318014110	Spacer, (6)
166	318298410	Bracket, base support, (2)
166A	318298403	Bracket, base support, lower, (2)
170	318335500	Anti-tip & accessories
185	318165800	Spacer
200	318335600	Frame & Wheel Assembly, black
201	318298210	Frame, drawer
219#	318003614	Thermostat, safety
219A	318003613	Thermostat, safety, 1.375" mtg, 105/120
263	316136500	Washer, flat
300	318326500	Shield, heat
* #	318224929	Harness, wiring, main
*	318235300	Connector assy., w/3 lugs, & instructions
*	3051050	Screw, shoulder
*	08016432	Screw, truss head, 8-18 x 0.375
*	5303211311	Screw, 8 x 0.500
*	5303307980	Screw, 8-32 x 0.437, (4)
*	5304415832	Screw, 8-18 x 0.406

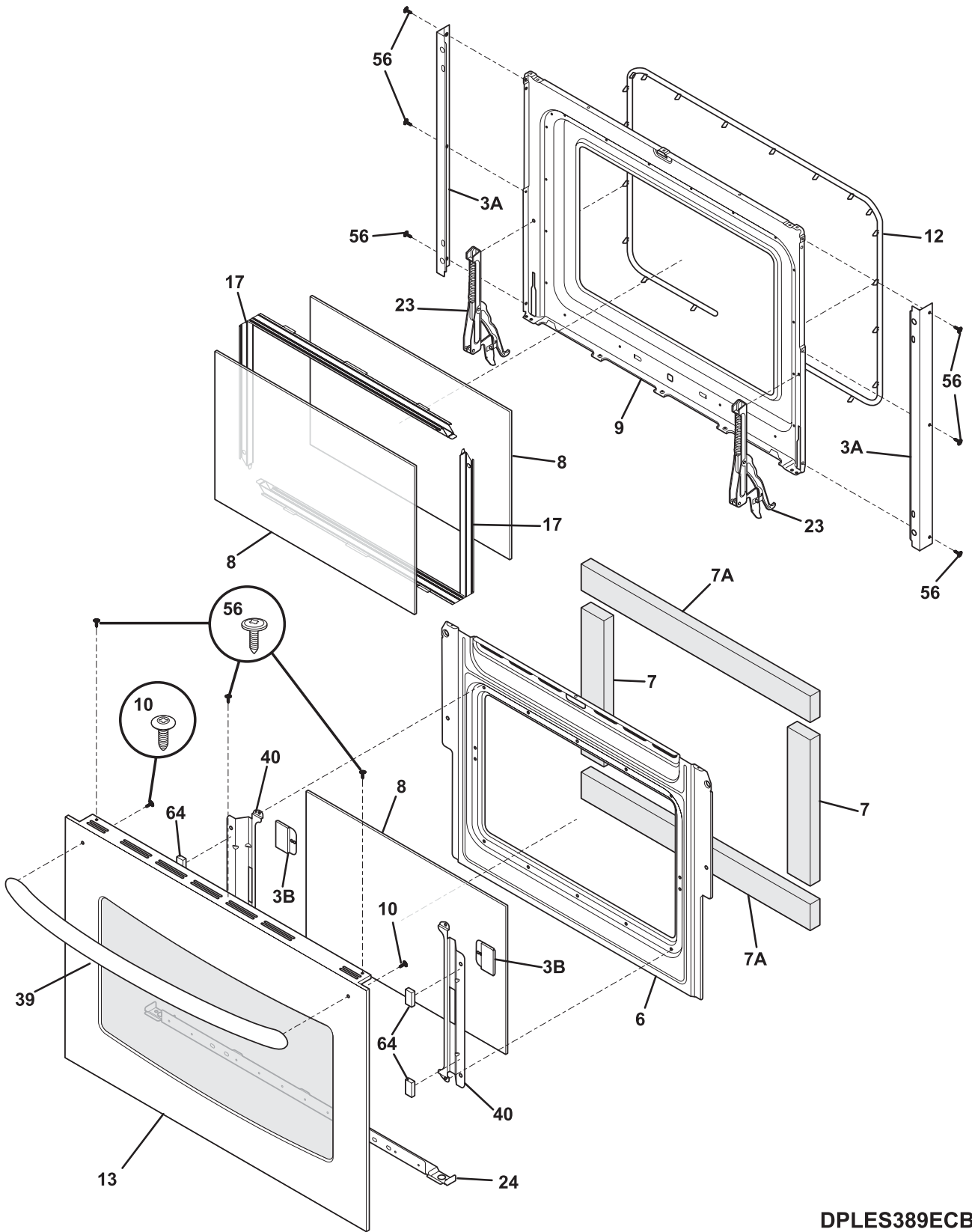
TOP/DRAWER



TOP/DRAWER

POS. NO	PART NO.	DESCRIPTION
1	318107308	Drawer
4	318298811	Panel, drawer, stainless, front
10	5303311174	Screw, 10-24 x 3/8
11	318298601	Bracket, drawer support, (2)
13	318259507	Glide, warmer, inner RH
13A	318259506	Glide, warmer, inner LH
15 #	318198925	Element, surface, 6/9, 1200/2500W, dual radiant
15A#	318198823	Element, surface, 9", large, 2700 W
15B#	318198817	Element, surface, 6", 1200 W, (2)
16	318223634	Main Top, glass assy., black
39	318219802	Handle, door/drawer, stainless
46	318225410	Box, burner
51 #	318044822	Light, indicator, clear
52A	318122006	Spring, element mtg, small
52C	318122010	Spring, element mtg, 1000W/2500W
124	316105501	Glide, outer/RH & LH, (2)
165	318227503	Plate, mounting
* #	318228917	Harness, wiring, cooktop
*	318163601	Cleaner-cooktop
*	5303325171	Washer, plastic
*	5303211311	Screw, 8 x 0.500
*	5303300265	Screw, 8-18 X 1/2, (2)
*	5303311333	Screw, 8-32 x 3/8

DOOR

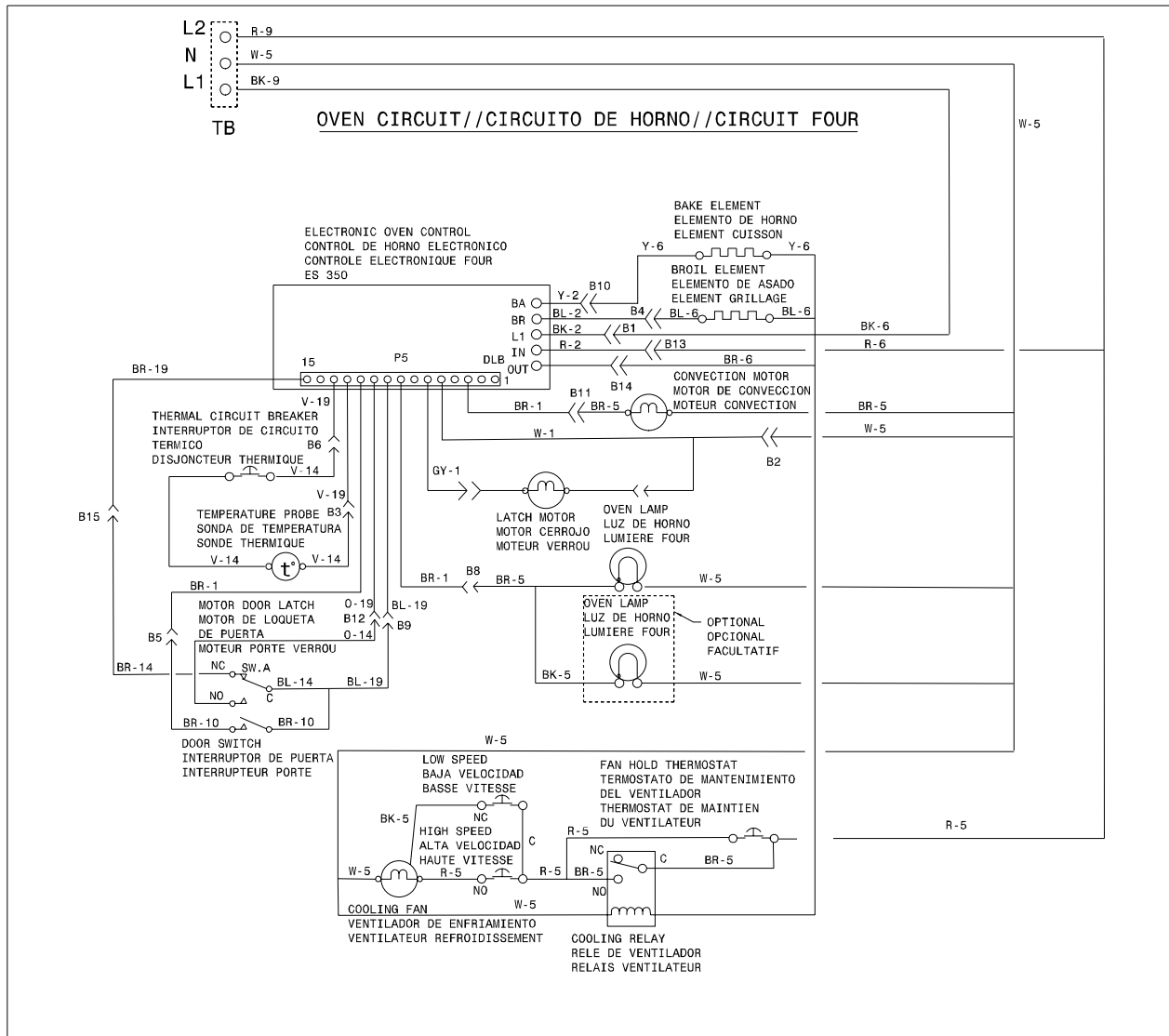


DPLES389ECB

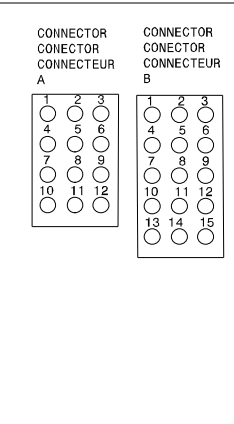
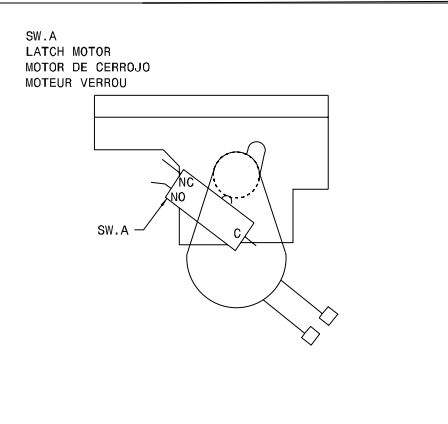
DOOR

POS. NO	PART NO.	DESCRIPTION
3A	318260401	Trim, oven door, side, (2)
3B	318262101	Cover, rear door, black, (2)
6	318260500	Baffle, door
7	318285057	Insulation, oven door
7A	318285062	Insulation, oven door
8	316117500	Glass, oven door, heat barrier
9	318259605	Liner, door
10	5303311174	Screw, 10-24 x 3/8
12	318053120	Seal, door, lower oven
13	318272172	Door Assy, glass, stainless steel, outer
17	316402403	Spacer, door glass, (2)
23	318024714	Hinge, door, (2)
24	318260301	Trim, door, black, lower
39	318219802	Handle, door/drawer, stainless
40	318242700	Bracket, glass holder, (2)
56	5304436875	Screw, 8-18 X 1/2, black
64	318165800	Spacer
*	316221001	Label, anti-tip
*	5304415832	Screw, 8-18 x 0.406

WIRING DIAGRAM



COLORS/CODIGOS/CODE COULEUR	CODE CODIGO CODE	GAUGE MEDIDA CALIBRE	TEMP. °C	CSA	UL
BK. - BLACK/NEGRO/NOIR					
G. - GREEN/VERDE/VERT					
W. - WHITE/BLANCO/BLANC					
R. - RED/ROJO/ROUGE					
O. - ORANGE/NARANJA/ORANGE					
Y. - YELLOW/AMARILLO/JAUNE					
BR. - BROWN/MORENO/BRUN					
BL. - BLUE/AZUL/BLEU					
	1	18	125	CL1251	3173
	2	16	125	CL1251	3173
	3	14	125	CL1251	3173
	4	12	125	CL1251	3173
	5	18	150	EXL-150	3321
	6	16	150	EXL-150	3321
	7	14	150	EXL-150	3321
	8	12	150	EXL-150	3321
	9	10	150	EXL-150	3321
	10	18	200	SEW-1	3122
	11	16	200	SEW-1	3122
	12	12	250		3252
	13	16	250		3252
	14	20	150	EXL-150	3321
	15	8	150	EXL-150	3321
	16	8	60		
	17	10	60		
	18	10	200	SEW-1	3122
	19	20	125	CL1251	3173



CAUTION: DISCONNECT CURRENT BEFORE REMOVING REAR COVER.
 ATENCION: CORTAR EL CORRIENTE ANTES DE REALIZAR EL MANTENIMIENTO DEL ELECTRODOMESTICO.
 ATTENTION: COUPEZ L'ALIMENTATION AVANT D'EFFECTUER LA REPARATION.

318271907 REV:B