

# FRIGIDAIRE

## Factory Parts Catalog

Product No.	FMV152KBA	FMV152KMA	FMV152KQA	FMV152KSA	FMV152KWA
Market	North America	North America	North America	North America	North America
Color	black	silver mist	bisque	stainless steel	white
Volts	120	120	120	120	120
Watts	1000	1000	1000	1000	1000
Wiring Diagram	316495069	316495069	316495069	316495069	316495069
Owner's Guide	316495057	316495057	316495057	316495057	316495057
Installation Instructions	316495063	316495063	316495063	316495063	316495063



Electrolux Major Appliances  
North & Latin America  
P.O. BOX 212378  
AUGUSTA, GA 30917

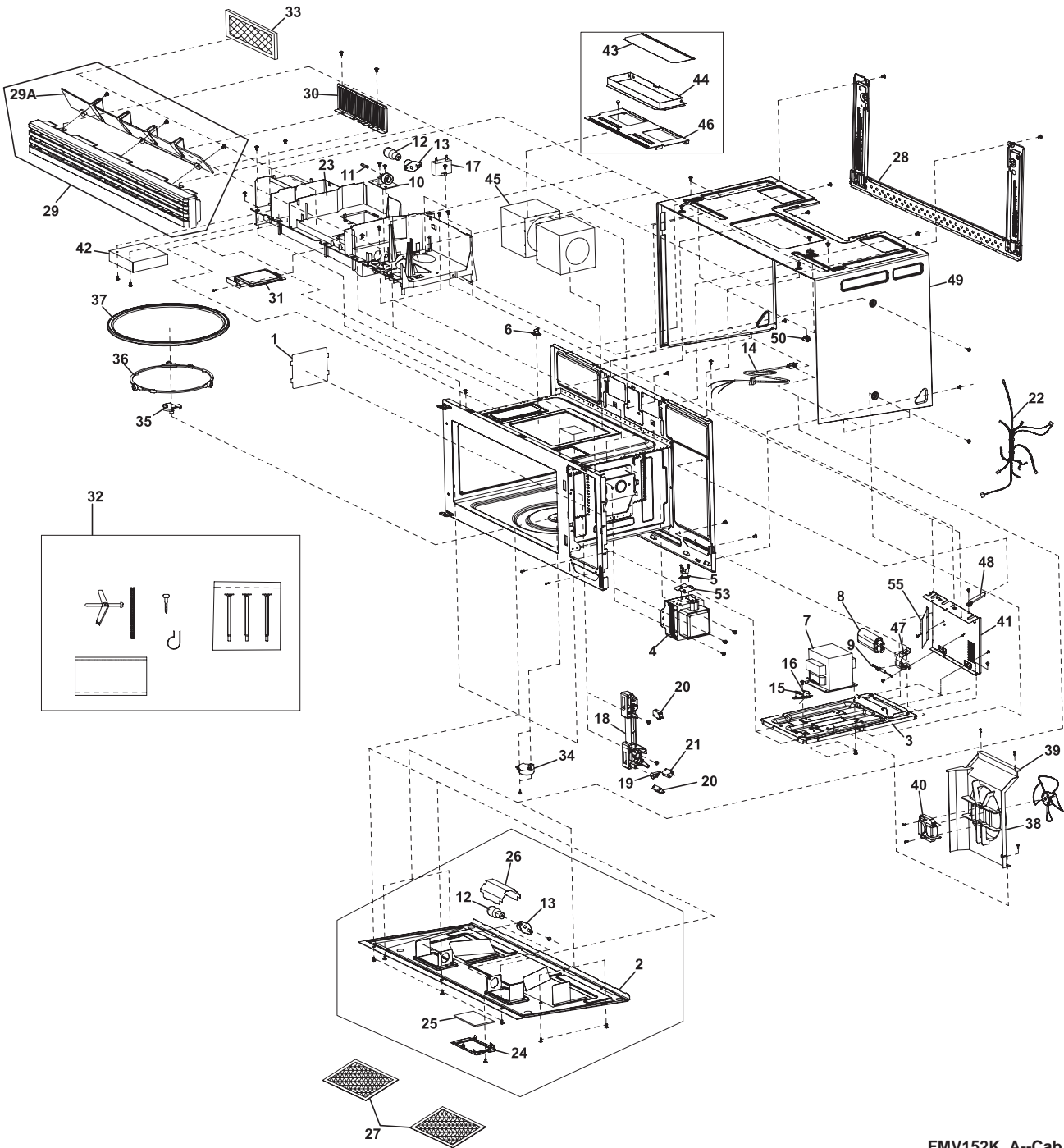
Publication No.  
**5995541033**  
09/05/22  
(EN/SERVICE/KC)  
099

### OVER-RANGE MICROWAVE

Model No.  
**FMV152K**

Copyright © 2009 Electrolux Home Products, Inc.  
All rights reserved.

OVEN,CABINET



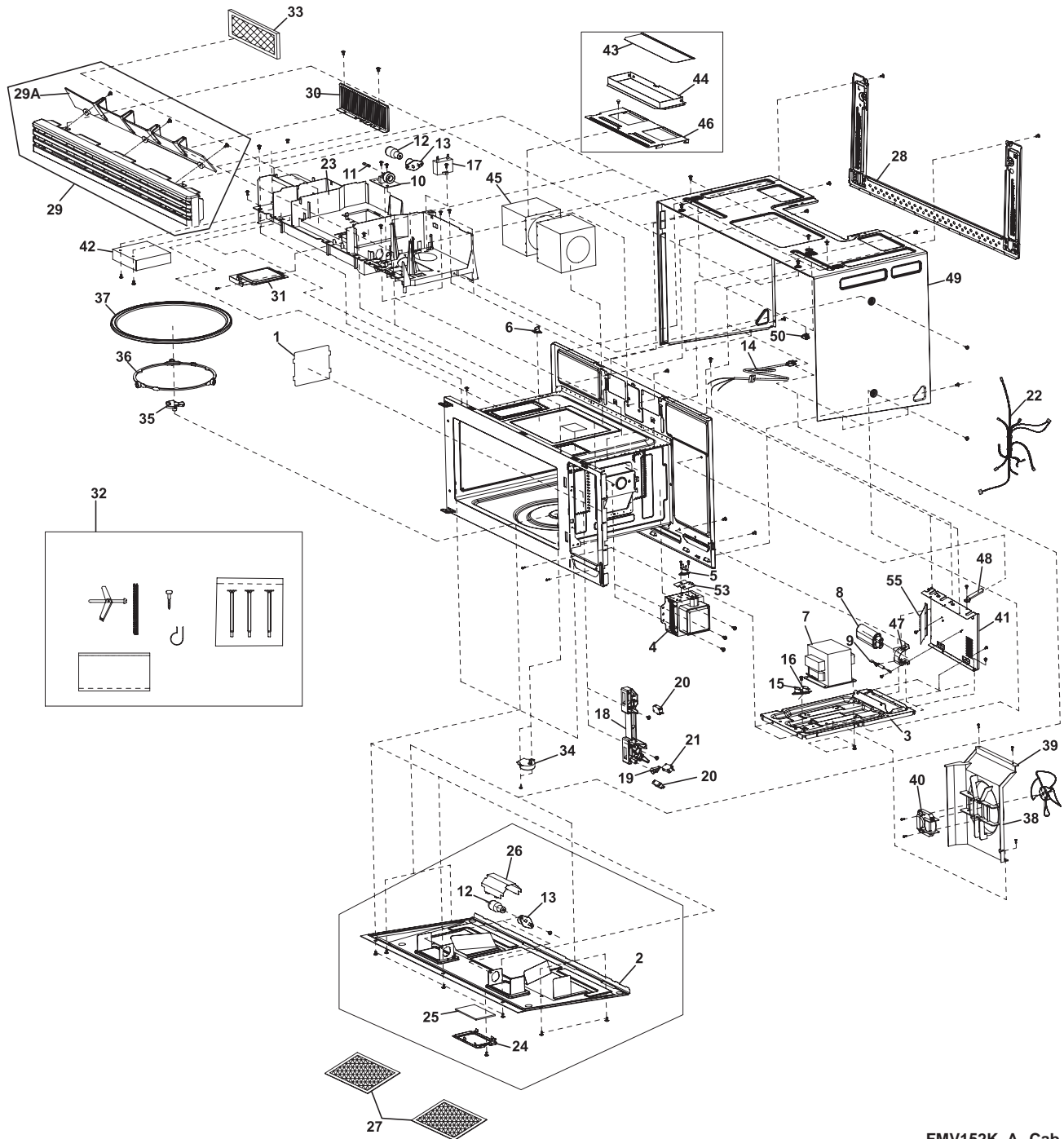
FMV152K\_A-Cab

**OVEN,CABINET**

Model Index: A FMV152K (FMV152KBA)  
 B FMV152K (FMV152KMA)  
 C FMV152K (FMV152KQA)  
 D FMV152K (FMV152KSA)  
 E FMV152K (FMV152KWA)

POS. NO	PART NO.	DESCRIPTION					
1	5304464061	A	B	C	D	E	Cover, waveguide
2	5304472476	A	B	C	D	E	Cover, unit base
3	5304464063	A	B	C	D	E	Base, transformer, right side
4 #	5304464072	A	B	C	D	E	Magnetron
5 #	5304464073	A	B	C	D	E	Thermostat, cutout, magnetron
6 #	5304464074	A	B	C	D	E	Thermostat, cutout, oven cavity
7 #	5304464075	A	B	C	D	E	Transformer, power, HV
8 #	5304464253	A	B	C	D	E	Capacitor, high voltage
9 #	5304472472	A	B	C	D	E	Diode, high voltage
10 #	5304472447	A	B	C	D	E	Filter, noise, electronic
11 #	5304464087	A	B	C	D	E	Fuse
12	5304464090	A	B	C	D	E	Lamp
13 #	5304464091	A	B	C	D	E	Lampholder, socket
14 #	5304464092	A	B	C	D	E	Power Cord, electric
15 #	5304464093	A	B	C	D	E	Thermostat, cutout, transformer
16 #	5304464094	A	B	C	D	E	Thermostat, cutout, vent motor
17 #	5304464095	A	B	C	D	E	Capacitor, start
18	5304464096	A	B	C	D	E	Latch Hook
19 #	5304464097	A	B	C	D	E	Switch, lever
20 #	5304464099	A	B	C	D	E	Switch, interlock
21 #	5304464098	A	B	C	D	E	Switch, monitor
22 #	5304464100	A	B	C	D	E	Wiring Harness, main
23	5304464101	A	B	C	D	E	Duct, air
24	5304464102	A	B	C	D	E	Frame, lens holder
25	5304464103	A	B	C	D	E	Lens, cooktop lamp, glass
26	5304464104	A	B	C	D	E	Cover, lamp
27 #	5304464105	A	B	C	D	E	Filter, grease, 5" X 7 1/2"
28	5304464255	A	B	C	D	E	Plate, mounting, rear
29	5304472489	A	-	-	-	-	Grille Assy, exhaust, black
29	5304472492	-	B	-	-	-	Grille Assy, exhaust, silver
29	5304472491	-	-	C	-	-	Grille Assy, exhaust, bisque
29	5304472493	-	-	-	D	-	Grille Assy, exhaust, stainless
29	5304472490	-	-	-	-	E	Grille Assy, exhaust, white
29A	5304472495	A	B	C	D	E	Louver, vent
30	5304464256	A	B	C	D	E	Cover, control shield, right
31	5304464111	A	B	C	D	E	Cover, lamp, oven cavity
32	5304464112	A	B	C	D	E	Hardware Kit, installation
33 #	5304464577	A	B	C	D	E	Filter, charcoal, 2" X 10"
34 #	5304464113	A	B	C	D	E	Motor, turntable
35	5304472494	A	B	C	D	E	Coupler, turntable/motor
36	5304464115	A	B	C	D	E	Support, turntable ring
37	5304464116	A	B	C	D	E	Tray, turntable, glass
38	5304464117	A	B	C	D	E	Duct, cooling fan
39 #	5304464257	A	B	C	D	E	Fan Blade, cooling fan
40 #	5304464118	A	B	C	D	E	Motor, cooling fan
41	5304472451	A	B	C	D	E	Duct, hood intake, right side

**OVEN,CABINET**



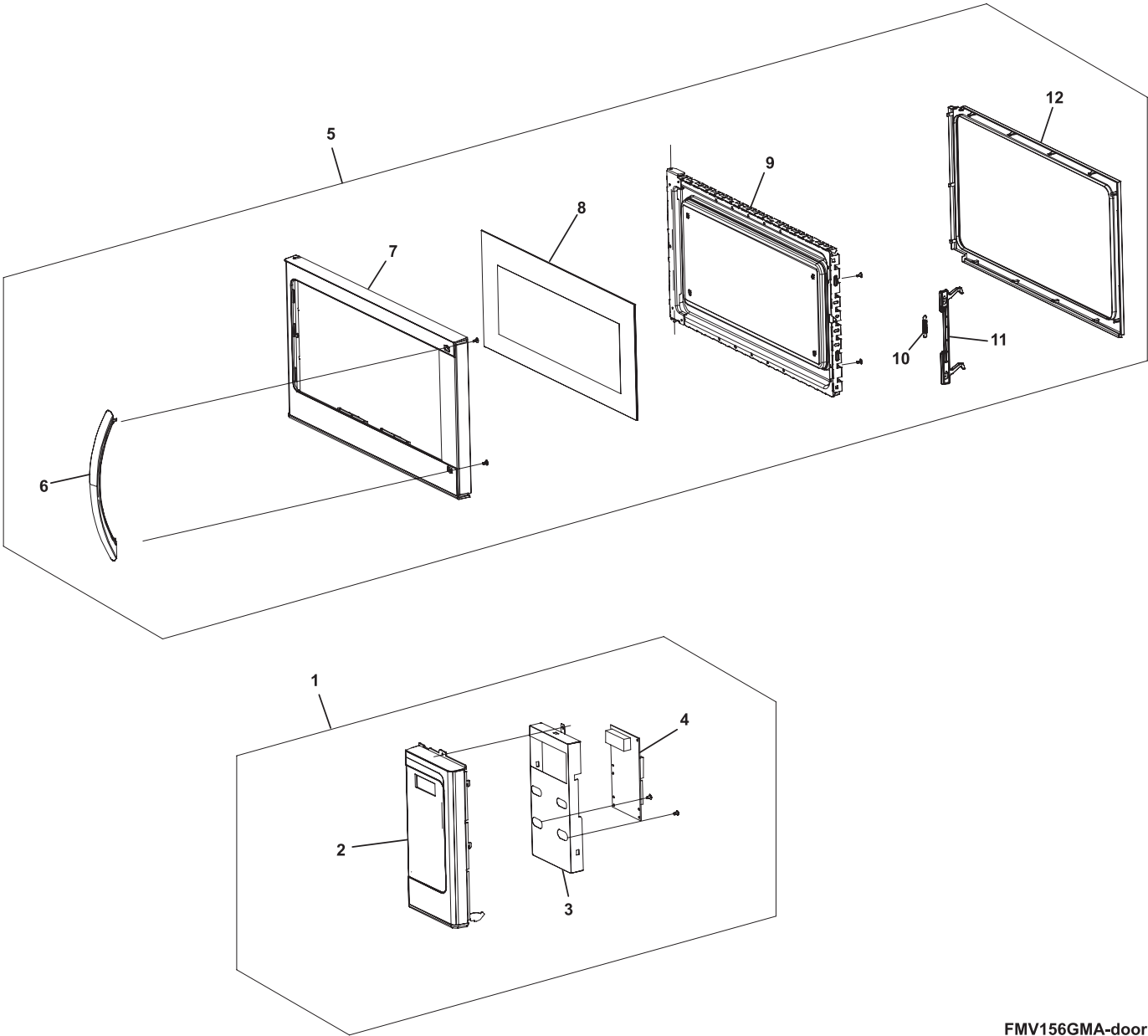
FMV152K\_A--Cab

**OVEN,CABINET**

*Model Index:*    **A** FMV152K (FMV152KBA)  
                           **B** FMV152K (FMV152KMA)  
                           **C** FMV152K (FMV152KQA)  
                           **D** FMV152K (FMV152KSA)  
                           **E** FMV152K (FMV152KWA)

POS. NO	PART NO.						DESCRIPTION
42	5304472452	A	B	C	D	E	Vent, air outlet
43	5304464119	A	B	C	D	E	Damper, door
44	5304464120	A	B	C	D	E	Frame, damper housing
45 #	5304464121	A	B	C	D	E	Motor, hood/vent fan
46	5304472453	A	B	C	D	E	Cover, vent motor
47	5304464123	A	B	C	D	E	Retainer, capacitor strap
48	5304464124	A	B	C	D	E	Spacer
49	5304472455	A	B	-	D	-	Cabinet, outer casing, black
49	5304472498	-	-	C	-	-	Cabinet, outer casing, bisque
49	5304472460	-	-	-	-	E	Cabinet, outer casing, white
50	5304464598	A	B	C	D	E	Mounting Nut Kit
53	5304472439	A	B	C	D	E	Bracket, thermostat
55	5304472454	A	B	C	D	E	Vent, air, magnetron
*	5304472496	A	B	-	D	-	Screw Kit, black
*	5304472497	-	-	C	-	E	Screw Kit, white

CONTROL PANEL,DOOR,MISC.



FMV156GMA-door

**CONTROL PANEL,DOOR,MISC.**

Model Index: A FMV152K (FMV152KBA)  
 B FMV152K (FMV152KMA)  
 C FMV152K (FMV152KQA)  
 D FMV152K (FMV152KSA)  
 E FMV152K (FMV152KWA)

POS. NO	PART NO.						DESCRIPTION
1 #	5304472477	A	-	-	-	-	Control Assembly, black
1 #	5304472721	-	B	-	-	-	Control Assembly, silver
1 #	5304472716	-	-	C	-	-	Control Assembly, bisque
1 #	5304472722	-	-	-	D	-	Control Assembly, stainless
1 #	5304472713	-	-	-	-	E	Control Assembly, white
2	5304472478	A	-	-	-	-	Frame, control panel, black
2	5304472718	-	B	-	-	-	Frame, control panel, silver
2	5304472717	-	-	C	-	-	Frame, control panel, bisque
2	5304464130	-	-	-	D	-	Frame, control panel, stainless
2	5304472715	-	-	-	-	E	Frame, control panel, white
3	5304464065	A	B	C	D	E	Panel, control mount, bracket
4 #	5304472467	A	B	C	D	E	Control Board, printed circuit
5	5304472479	A	-	-	-	-	Door Assembly, black
5	5304472723	-	B	-	-	-	Door Assembly, silver
5	5304472719	-	-	C	-	-	Door Assembly, bisque
5	5304472724	-	-	-	D	-	Door Assembly, stainless
5	5304472714	-	-	-	-	E	Door Assembly, white
6	5304472481	A	B	-	D	-	Handle Assembly, door, black
6	5304472483	-	-	C	-	-	Handle Assembly, door, bisque
6	5304472482	-	-	-	-	E	Handle Assembly, door, white
7	5304472480	A	-	-	-	-	Panel, outer door, black
7	5304464251	-	B	-	-	-	Panel, outer door, silver
7	5304464250	-	-	C	-	-	Panel, outer door, bisque
7	5304473040	-	-	-	D	-	Panel, outer door, stainless
7	5304464249	-	-	-	-	E	Panel, outer door, white
8	5304464067	A	B	-	D	-	Panel, glass, black, outer door
8	5304464135	-	-	C	-	-	Panel, glass, bisque, outer door
8	5304464134	-	-	-	-	E	Panel, glass, white, outer door
9	5304472444	A	B	-	D	-	Panel, inner door, black
9	5304472720	-	-	C	-	-	Panel, inner door, bisque
9	5304472459	-	-	-	-	E	Panel, inner door, white
10	5304464069	A	B	C	D	E	Spring, door latch
11 #	5304464070	A	B	C	D	E	Latch, door
12	5304464071	A	B	C	D	E	Choke Cover, inner door

# WIRING SCHEMATIC

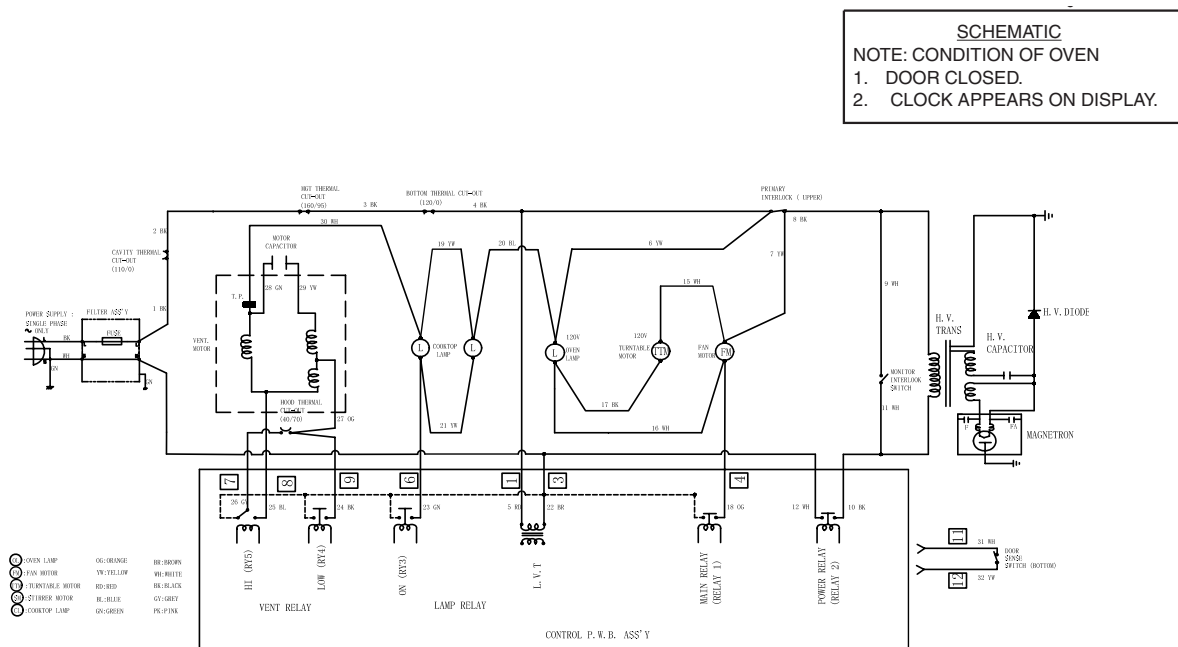


Figure O-1. Oven Schematic-Off Condition

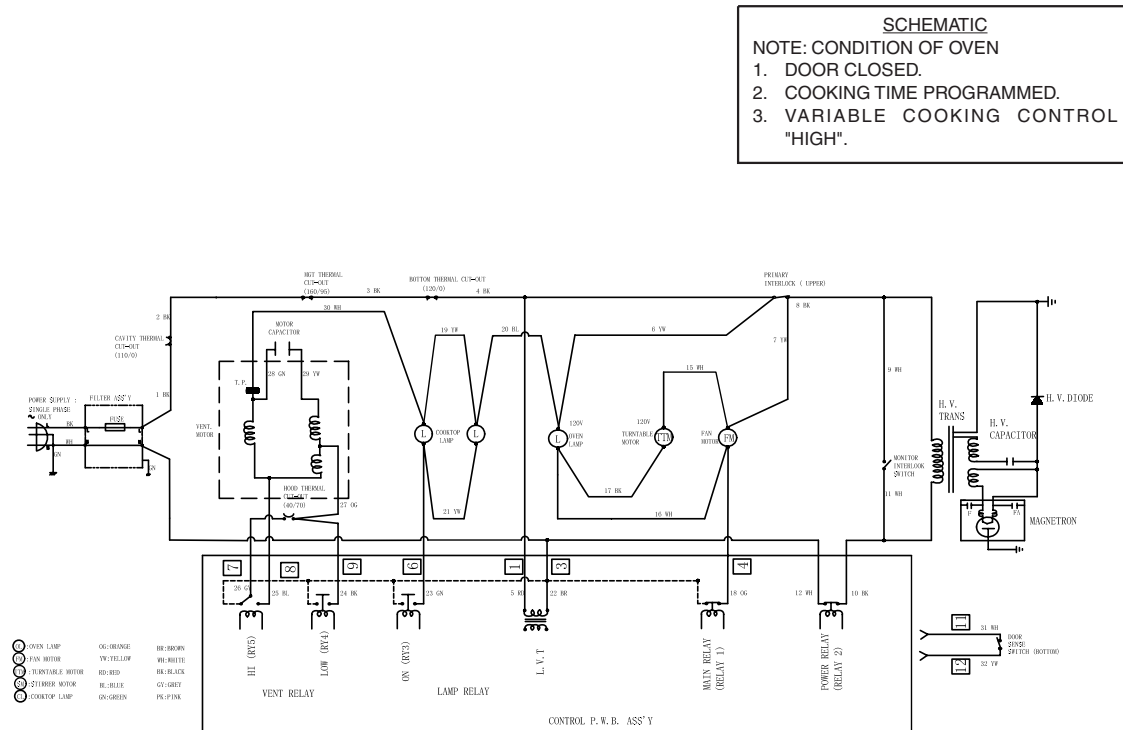


Figure O-2. Oven Schematic-Cooking Condition