

# professional series Storage Systems



CCE26ADS



CCE20ADV-S



CCE3DRWSS



CCE24ADV-S



CCE20ADH-S



CCE24PDSS



CCE24ADH-S



CCE1DRWSS



CCE30CDSS



CCE2DRWSS

## MODELS AVAILABLE

Double access doors	CCE36ADS – 36" double access doors CCE32ADS – 32" double access doors CCE26ADS – 26" double access doors
Single access doors	CCE24ADV-S – 24" vertical access door w/ louvers CCE24ADH-S – 24" horizontal access door w/ louvers CCE20ADV-S – 20" vertical access door CCE20ADH-S – 20" horizontal access door
Drawer systems	CCE1DRWSS – single drawer system CCE2DRWSS – double drawer system CCE3DRWSS – triple drawer system CCE30CDSS – 30" slide out cooler drawer system CCE24PDSS – 24" slide out LP/ refuse drawer system

## FEATURES

American made  
100% stainless steel body construction

## FEATURES (continued)

Precision drawer slides (drawer systems only)  
Heavy duty metal hinges encased in black  
Chrome plated euro-handles  
Solid one-piece frame construction

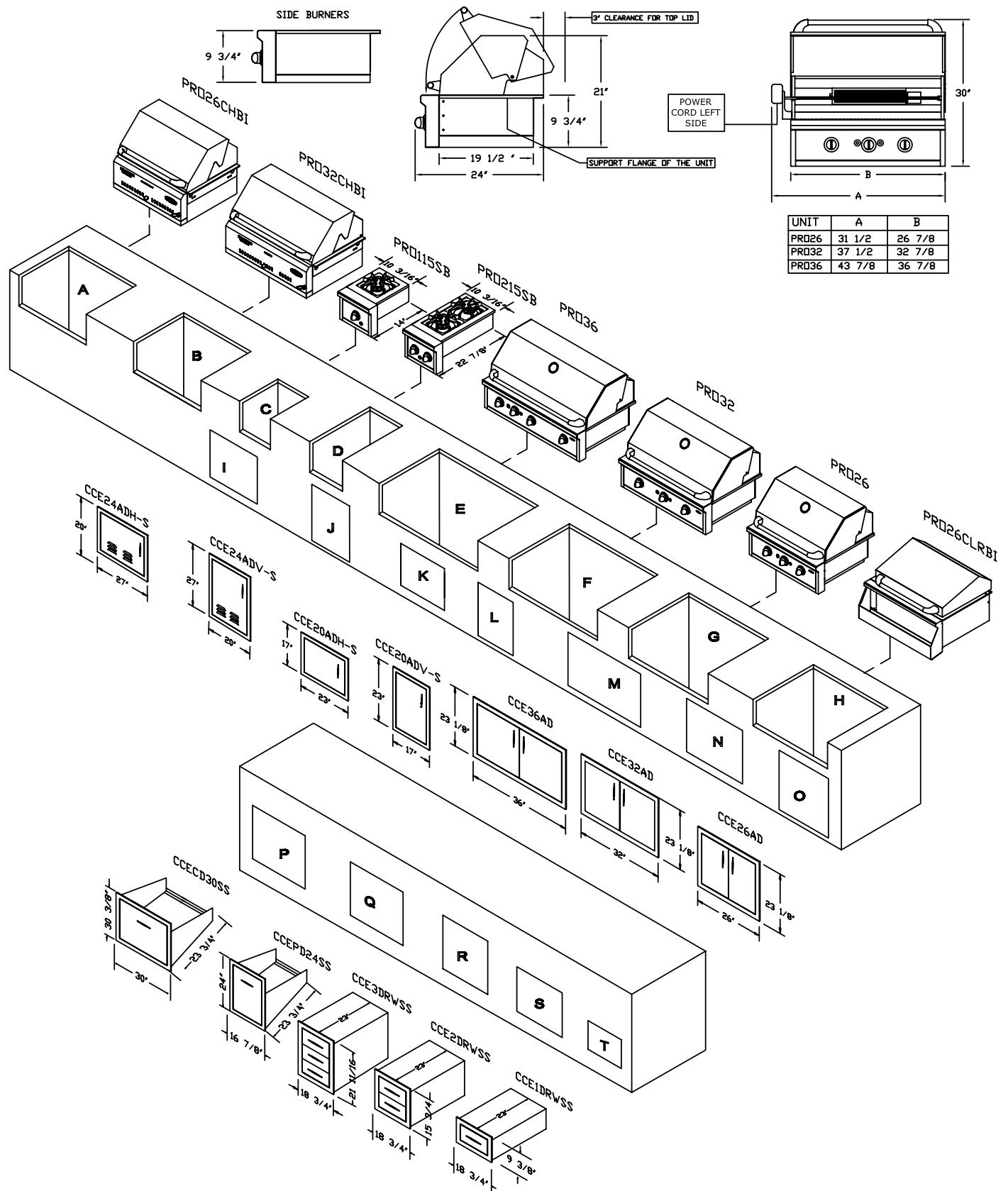
## COMPATIBILITY

PRO26RBI – Pro Series 26" grill w/ rotisserie  
PRO32RBI – Pro Series 32" grill w/ rotisserie  
PRO36RBI – Pro Series 36" grill w/ rotisserie  
26CLRBI – cocktail station + PSQ26CLR-FRT or PRO26CLR-FRT (ordered separately)  
PRO26CHBI – Pro Series 26" charcoal grill  
PRO32CHBI – Pro Series 32" charcoal grill

## SHIPPING WEIGHT

Access doors: 25 LBS - 55 LBS  
Access drawers: 10 LBS - 55 LBS

# CABINET PREPARATION



PROFESSIONAL GRILLS																				
CUT-OUT	A	B	C	D	E	F	G	H	I	J	K	L	M	N	O	P	Q	R	S	T
HEIGHT	10 3/4"	10 3/4"	9 1/4"	9 1/4"	9 1/4"	9 1/4"	9 1/4"	10"	17 3/8"	24 3/8"	14 3/8"	20 3/8"	20 3/8"	20 3/8"	20 3/8"	17 1/2"	21 1/4"	19"	13"	6 13/16"
WIDTH	26 3/4"	32 3/4"	8 3/4"	8 3/4"	35 1/2"	31 1/2"	25 1/2"	26 3/4"	24 5/16"	17 3/8"	20 5/16"	14 3/8"	33 1/4"	29 1/4"	27 1/2"	14 1/4"	16"	16"	16"	16"
DEPTH	19 1/2"	19 1/2"	10"	18 7/8"	19 1/4"	19 1/4"	19 1/4"	19 1/2"							24"	24"	24"	24"	24"	24"



Capital Cooking Equipment Inc.  
13211 Florence Ave.  
Santa Fe Springs, CA 90670

Phone: 562-903-1168  
Toll Free: 866-402-4600  
email: customerservice@capital-cooking.com

Made in the U.S.A.  
Visit our web site: www.capital-cooking.com  
© 2006 Capital Cooking Equipment, Inc.