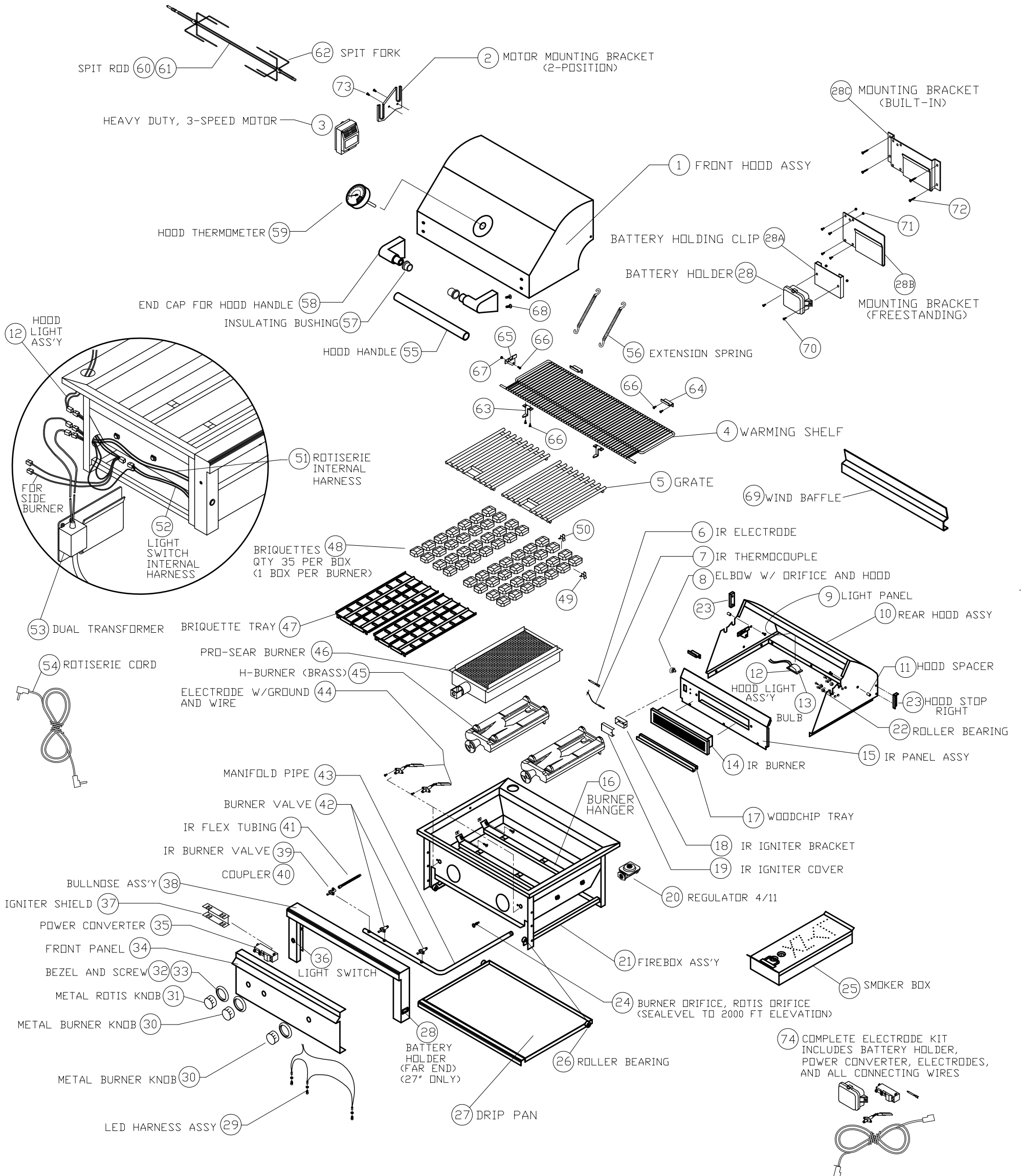




2007 PROFESSIONAL SERIES



2007 PROFESSIONAL SERIES PARTS LIST

ITEM	GRILL SIZE	PART NO.	DESCRIPTION
1	L27	80245	FRONT HOOD ASSY, 27"
	L30	80208	FRONT HOOD ASSY, 30"
	L36	80224	FRONT HOOD ASSY, 36"
	L42	80198	FRONT HOOD ASSY, 42"
	L54	80217	FRONT HOOD ASSY, 54"
2	30,36,42,54	32187	MOTOR MOUNTING BRACKET,30",36",42",54"
	L27	30394	MOTOR MOUNTING BRACKET, 27"
3	30,36,42,54	80277	MOTOR ASSY, HEAVY DUTY 3 SPEED, 2007
	L27	30615	MOTOR, HEAVY DUTY, 2-SPEED
4	L27	32025	WARMING SHELF, 27"
	L30	32109	WARMING SHELF, 30" 2007
	L36	32110	WARMING SHELF, 36" 2007
	L42	32111	WARMING SHELF, 42" 2007
	L54	32112	WARMING SHELF, 54" 2007
5	L27	17012	(2) GRATES- 12" X 18"
	L30	30018	(2) GRATES- 13 1/2" X 21"
	L36	17020	(2) GRATES- 16 1/2" X 18 1/2"
	L42	30018	(2) GRATES- 13 1/2" X 21"
		30019	(1) GRATE- 12" X 21" (CENTER)
	L54	30018	(2) GRATES- 13 1/2" X 21"
		30019	(2) GRATES- 12" X 21"
6	ALL	32171	IR ELECTRODE
7	ALL	20018	THERMOCOUPLE
8	ALL	13009	ELBOW W/ DRIFICE AND HOOD
9	L27	32001	LIGHT PANEL/REAR HOOD LINER, 27"
	L30	32156	LIGHT PANEL/REAR HOOD LINER, 30" 2007
	L36	32157	LIGHT PANEL/REAR HOOD LINER, 36" 2007
	L42	32158	LIGHT PANEL/REAR HOOD LINER, 42" 2007
	L54	32159	LIGHT PANEL/REAR HOOD LINER, 54" 2007
10	L27	80176	REAR HOOD ASSY, 27"
		80247	REAR HOOD ASSY, 27" NON-IR
	L30	80269	REAR HOOD ASSY, 30"
	L36	80270	REAR HOOD ASSY, 36"
	L42	80271	REAR HOOD ASSY, 42"
	L54	80272	REAR HOOD ASSY, 54"
11	30,36,42,54	20054	HOOD SPACER, 30", 36", 42", 54"
	L27	10146	HOOD SPACER, 27"
12	30,36,42	80259	HOOD LIGHT ASS'Y W/10W BULB, 2007
	L54	80266	HOOD LIGHT ASS'Y, DUAL 5W BULB, 54"2007
13	27,30,36,42	31979	BULB, REPLACEMENT, 10W HALOGEN
	L54	31070	BULB, REPLACEMENT, 5W HALOGEN, 54"
14	L27	11168	IR BURNER (16") FOR 27"
	30,36,54	11169	IR BURNER (21") FOR 30", 36", 54"
	L42	30179	IR BURNER (28") FOR 42"
15	L27	80249	IR PANEL ASSY, 27"
	27 NON-IR	32007	REAR FINISHING PANEL, NON-IR, 27"
	L30	80273	IR PANEL ASSY, 30" 2007
	L36	80274	IR PANEL ASSY, 36" 2007
	L42	80275	IR PANEL ASSY, 42" 2007
	L54	80276	IR PANEL ASSY, 54" 2007
16	L27	10067	BURNER HANGER, 27"
	L30	31527	BURNER HANGER, 30"
	L36	31577	BURNER HANGER, 36"
	L42	31758	BURNER HANGER, 42"
	L54	31333	BURNER HANGER, 54"
17	27,30,54	10159	WOODCHIP TRAY (27", 30", 54")
	36,42	10158	WOODCHIP TRAY (36", 42")
18	ALL	32174	IR IGNITER BRACKET
	L54	32173	IR IGNITER BRACKET, RIGHT, 54"
19	L30	31244	IR IGNITER COVER (30")
	27,36,42,54	10043	IR IGNITER COVER (27", 36", 42", 54")
20	ALL	30781	REGULATOR 4/11 N/G ONLY
	27,30	13026	REGULATOR W/36" HOSE SINGLE STAGE
	36,42,54	13053	REGULATOR W/30" HOSE DOUBLE STAGE
21	L27	80248	FIREBOX ASSY, 27"
	L30	80207	FIREBOX ASSY, 30" UNIVERSAL
	L36	80223	FIREBOX ASSY, 36" UNIVERSAL
	L42	80197	FIREBOX ASSY, 42" UNIVERSAL
	L54	80216	FIREBOX ASSY, 54"
22	ALL	20055	ROLLER BEARING
	ALL	31804	SPIT BEARING SCREW, #8-32x5/8 PH FLAT
	ALL	31805	SPIT BEARING NUT, ACORN, #8-32
23	ALL	31801	HOOD STOP, EXTENDED, RIGHT
	ALL	31802	HOOD STOP, EXTENDED, LEFT
24	L27,L36	13013	DRIFICE,BURNER, NG (#41 SHORT)
	L27,L36	13019	DRIFICE,BURNER, LP (#53 SHORT)
	30,42,54	30329	DRIFICE,BURNER, NG (#41 LONG)
	30,42,54	30328	DRIFICE,BURNER, LP (#53 LONG)
	PROSEAR	13015	DRIFICE,BURNER, NG (#44 SHORT)
	PROSEAR	13020	DRIFICE,BURNER, LP (#54 SHORT)
	30,36,54	13016	DRIFICE, IR ROTIS., NG (#50 SHORT)
	30,36,54	13021	DRIFICE, IR ROTIS., LP (#57 SHORT)
	L27"	13016	DRIFICE, IR ROTIS., NG (#50 SHORT)
	L27"	13021	DRIFICE, IR ROTIS., LP (#57 SHORT)
	L42"	30470	DRIFICE, IR ROTIS., NG (#48 SHORT)
	L42"	31342	DRIFICE, IR ROTIS., LP (#56 SHORT)
25	30,42,54	90073	SMOKER BOX ASSY 30", 42", 54"
	27,36	90074	SMOKER BOX ASSY, 27", 36"
26	ALL	20055	ROLLER BEARING
	ALL	14099	ROLLER BEARING SCREW,#10-24x3/4 PH FLAT
	ALL	20083	ROLLER BEARING NUT, #10-24 HEX
27	L27	32002	DRIP PAN, 27"
	L30	18050	DRIP PAN, 30"
	L36	31494	DRIP PAN, 36"
	L42	18051	DRIP PAN, 42"
	L54	31324	DRIP PAN, 54"
28	L27	31879	BATTERY HOLDER ASS'Y (27" ONLY)

ITEM	GRILL SIZE	PART NO.	DESCRIPTION
28	30,36,42,54	32172	BATTERY HOLDER
28A	30,36,42,54	32209	BATTERY HOLDING CLIP
28B	FREESTANDING	32198	BATTERY/TRANSFORMER MNTG BRACKET F/S
28C	BUILT-IN	32205	BATTERY/TRANSFORMER MNTG BRACKET B/I
29	L30	80236	LED HARNESS ASSY, 30"
	36,42	80235	LED HARNESS ASSY, 36", 42"
	L54	80237	LED HARNESS ASSY, 54"
30	ALL	31773	METAL BURNER KNOB, ALL SIZES
31	ALL	31774	METAL IR ROTIS. KNOB, ALL SIZES
32	ALL	10001	BEZEL
33	ALL	31929	BEZEL SCREW, #6-32 X 1/8 PH PAN
34	L27	31998	FRONT PANEL, 27"
		32006	FRONT PANEL, 27", NON-IR
	L30	31670	FRONT PANEL, 30"
		31787	FRONT PANEL, 30" PROSEAR
	L36	31682	FRONT PANEL, 36"
		31789	FRONT PANEL, 36" PROSEAR
	L42	31687	FRONT PANEL, 42"
		31790	FRONT PANEL, 42" PROSEAR
	L54	31691	FRONT PANEL, 54"
35	30,36,42,54	32169	POWER CONVERTER
	L27	31161	IGNITION MODULE (4-SPARK) 27" W/IR
	L27	31162	IGNITION MODULE (2-SPARK) 27" NON-IR
36	30,36,42,54	32199	LIGHT SWITCH, BLUE LIGHTED, 30",36",42",54"
	L27	20078	LIGHT SWITCH, STANDARD, 27"
37	ALL	31398	IGNITER SHIELD
38	L27	80174	BULLNOSE ASS'Y, 27"
	L30	80261	BULLNOSE ASS'Y, 30", 2007
	L36	80263	BULLNOSE ASS'Y, 36", 2007
	L42	80265	BULLNOSE ASS'Y, 42", 2007
	L54	80268	BULLNOSE ASS'Y, 54", 2007
39	ALL	31772	IR BURNER VALVE W/ MICROSWITCH
40	L27	31065	COUPLER, 27" ONLY
41	ALL	31794	FLEX HOSE, 9 MM X 38" W/ 7/16 FITTINGS
42	ALL	31771	MAIN BURNER VALVE W/ MICROSWITCH
43	L27	11075	MANIFOLD PIPE, 27"
	L30	31851	MANIFOLD PIPE, 30"
	L36	31741	MANIFOLD PIPE, 36"
	L42	31742	MANIFOLD PIPE, 42"
	L54	31793	MANIFOLD PIPE, 54"
44	ALL	32170	ELECTRODE, BURNER, GROUNDED
	L27	31220	ELECTRODE W/ 15" WIRE, 27" ONLY
	L27	31221	ELECTRODE W/ 25" WIRE, 27" ONLY
45	30,42,54	30485	H-BURNER (BRASS)
	27,36	11012	H-BURNER (BRASS)
46	PS MODELS	32183	PROSEAR BURNER, 30", 42", 54", 2007
	PS MODELS	31783	PROSEAR BURNER, SHORT, 36" ONLY
47	30,42,54	80015	BRIQUETTE TRAY, 30", 42", 54"
	30,42,54	90071	COMPLETE TRAY W/ BRIQUETTES & CLIPS
	42,54	80033	BRIQUETTE TRAY, NARROW, 42",54"
	42,54	90072	COMPLETE TRAY W/ BRIQUETTES & CLIPS
	27,36	80232	BRIQUETTE TRAY, 27", 36"
	27,36	90070	COMPLETE TRAY W/ BRIQUETTES & CLIPS
48	ALL	90053	BRIQUETTES, 35 PER BOX
49	ALL	31679	BRIQUETTE CENTER RETAINING CLIP
50	ALL	31680	BRIQUETTE END RETAINING CLIP
51	ALL	80258	ROTISERIE INTERNAL HARNESS, 2007
52	ALL	80257	LIGHT SWITCH INTERNAL HARNESS + SWITCH 2007
53	ALL	32113	DUAL TRANSFORMER, 2007
54	ALL	31170	ROTISERIE EXTERNAL CORD
55	L27	10063	HOOD HANDLE, 27"
	L30	31767	HOOD HANDLE, 30"
	L36	31768	HOOD HANDLE, 36"
	L42	31769	HOOD HANDLE, 42"
	L54	31770	HOOD HANDLE, 54"
56	30,42,54	31874	EXTENSION SPRING, 30", 42", 54"
	L36	31780	EXTENSION SPRING, 36"
57	30,36,42,54	31738	INSULATING BUSHING, HOOD HANDLE
58	30,36,42,54	31736	END CAP FOR HOOD HANDLE
	L27	11117	END CAP FOR HOOD HANDLE, 27"ONLY
	L27	20016	INSULATOR FOR HOOD HANDLE, 27"ONLY
59	ALL	31200	HOOD THERMOMETER
60	L27	30756	SPIT ROD, 27" ONLY
	L27	20014	SPIT ROD HANDLE, 27" (NOT SHOWN)
61	L30	32128	SPIT ROD, 30" 2007
	L36	32129	SPIT ROD, 36" 2007
	L42	32130	SPIT ROD, 42" 2007
	L54	32131	SPIT ROD, 54" 2007
62	L27	31067	SPIT FORK, 27" ONLY
	30,36,42,54	31563	SPIT FORK, HEAVY DUTY, 30,36,42,54
63	30,36,42,54	32132	FRONT RETAINING BRACKET, WARMING RACK
64	30,36,42,54	32133	REAR RETAINING BRACKET, WARMING RACK
65	30,36,42,54	32194	LEFT RETAINING BRACKET, WARMING RACK
66	30,36,42,54	14014	SCREW #8-32 x 3/8 PH TRUSS HEAD S/S
67	30,36,42,54	14024	LOCK NUT, #8-32, S/S
68	30,36,42,54	14030	BOLT, HEX HEAD, 1/4-20 X 1/2", S/S
	L27	31601	BOLT, HEX HEAD, 1/4-20 X 7/8", S/S
69	L27	32079	WIND BAFFLE, 27"
	L30	32081	WIND BAFFLE, 30"
	L36	32080	WIND BAFFLE, 36"
	L42	32082	WIND BAFFLE, 42"
	L54	32083	WIND BAFFLE, 54"
70	30,36,42,54	31206	SCREW, #6-32 X 1/2 PH PAN HEAD, S/S
71	30,36,42,54	31207	NUT, HEX, #6-32, S/S
72	30,36,42,54	14038	SCREW, #8 X 1-1/2 PHIL, TYPE A, S/S
73	30,36,42,54	32190	SCREW, #10-32 X 1-1/4 PH FLAT HD S/S
74	L30	80260	COMPLETE ELECTRODE KIT, 30" 2007
	L36	80262	COMPLETE ELECTRODE KIT, 36" 2007
	L42	80264	COMPLETE ELECTRODE KIT, 42" 2007
	L54	80267	COMPLETE ELECTRODE KIT, 54" 2007