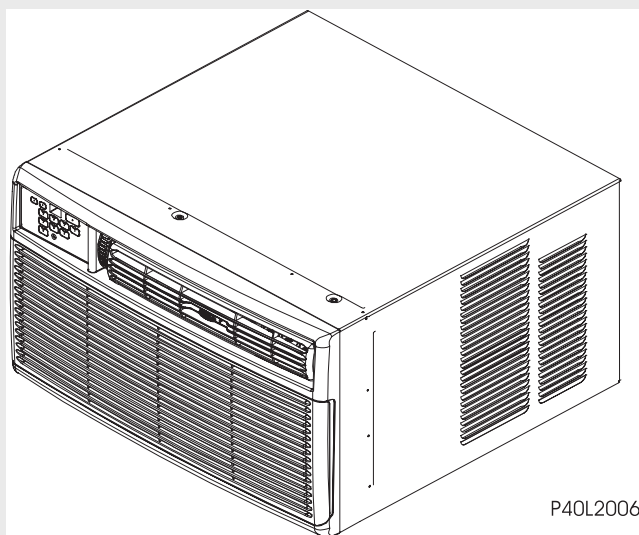


Frigidaire

Factory Parts Catalog



P40L2006

Product No.	FAM18ER2A1
Series	Median
Color	white
Volts	230/208
BTU-Cooling	18500/18200
BTU-Heating	16000/13000
Owner's Guide	66121617en
Installation Instructions	66121625
Market	North America

 **Electrolux**

Electrolux Major Appliances
North & Latin America
P.O. BOX 212378
AUGUSTA, GA 30917

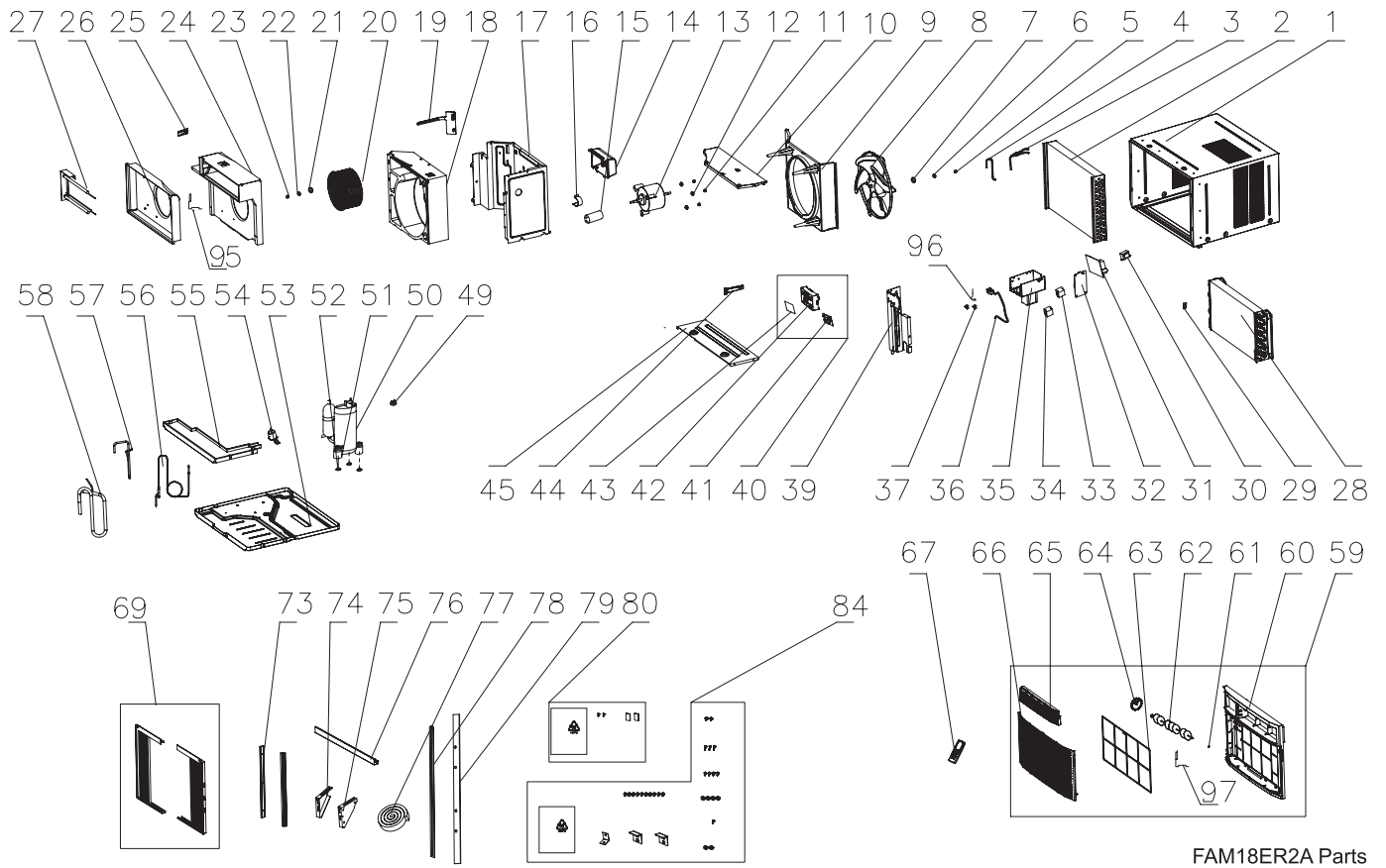
Publication No.
5995497475
07/08/15
(EN/SERVICE/KC)
099

**ROOM AIR
CONDITIONER**

**Model No.
FAM18ER2**

Copyright © 2007 Electrolux Home Products, Inc.
All rights reserved.

RECOMMENDED SPARE PARTS

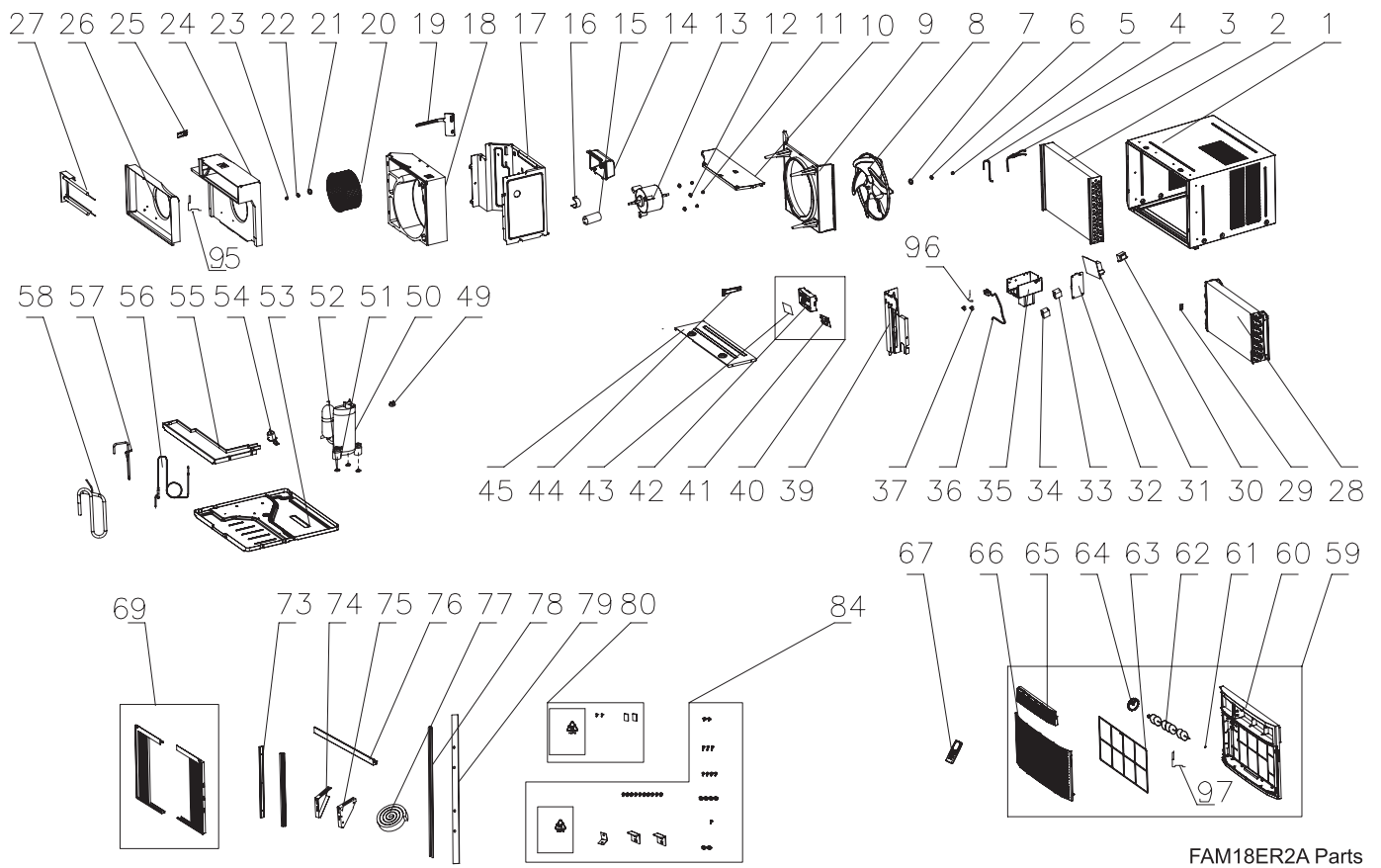


FAM18ER2A Parts

RECOMMENDED SPARE PARTS

POS. NO	PART NO.	DESCRIPTION
1	5304459165	Cabinet, wrapper/sleeve
2 #	5304459649	Condenser
3 #	5304459167	Tube, inlet, condenser
4 #	5304459650	Tube, outlet, condenser
5	5304459169	Nut, M8
6	5304459170	Washer, #8
7	5304459171	Washer, #8
8 #	5304459172	Fan Blade, propeller
9	5304459173	Shroud, condenser fan
10	5304459174	Cover, condenser/fan, top
11	5304459175	Nut, M6
12	5304459176	Washer, #6
13 #	5304459456	Motor, fan
14	5304459178	Cover, capacitor box
15 #	5304459181	Capacitor
16	5304459182	Strap, capacitor clamp
17	5304459184	Bulkhead, air system
18	5304459457	Scroll, blower housing, rear
19	5304459186	Door, fresh air vent, with lever
20 #	5304459187	Blower Wheel, centrifugal fan
21	5304459188	Washer, #10
22	5304459189	Washer, #10
23	5304459190	Nut, M10
24	5304461820	Scroll, blower housing, front
25	5304459192	Link, lever/vent door
26	5304459771	Shield, heater housing, steel
27 #	5304459582	Heater Assembly, electric
28 #	5304459193	Evaporator
29	5304460030	Clip, sensor support
30 #	5304459196	Transformer
31 #	5304459460	PC Board, control, main
32	5304459232	Cover, control box, side plate
33 #	5304459234	Relay
34 #	5304459737	Relay, AC contactor
35	5304459235	Control Box
36 #	5304459471	Power Cord, electric, LCDI
37	5304459237	Clamp, wiring
39	5304459238	Bulkhead, control system
40 #	5304459472	Control Panel Assembly, console
41 #	5304459473	PC Board, display/input
42	5304459242	Control Panel, display console
43	5304459474	Overlay, control display
44	5304459244	Handle, vent control
45	5304459245	Cover, plate, top/front
49 #	5304459450	Overload Protector, compressor
50 #	5304459451	Compressor
51	5304459475	Grommet, compressor
52	5304459256	Nut, compressor, M8, w/washer
53	5304459476	Base, unit chassis
54 #	5304459477	Valve, drain
55	5304459259	Tray, drip pan, foam

RECOMMENDED SPARE PARTS



FAM18ER2A Parts

RECOMMENDED SPARE PARTS

POS. NO	PART NO.	DESCRIPTION
56 #	5304459478	Tube, capillary
57 #	5304459479	Tube, discharge
58 #	5304459480	Tube, suction
59 #	5304459482	Front Assembly, complete panel
60	5304459532	Panel, frame, front
61	5304459272	Gasket, vertical louver, rubber
62 #	5304459273	Louver, vertical
63 #	5304459275	Filter, air
64	5304459274	Knob, auger wheel, louver
65 #	5304459276	Louver, horizontal
66	5304459453	Panel, front grille, tilt-out
67 #	5304459455	Remote Control, transmitter
69	5304461706	Window Filler Kit, slider panels
73	5304459536	Retainer, shutter, cabinet sides
74	5304459537	Bracket, support, left, angle
75	5304459538	Bracket, support, right, angle
76	5304459539	Rail, shutter track, top
77	5304459559	Seal, sash, window stuffer
78	5304459560	Seal, bottom rail, cab/chassis
79	5304459561	Seal, top rail, cabinet
80	5304459772	Kit, shutter lock, screw/washers
84	5304459562	Hardware Kit, installation
95 #	5304459792	Thermistor, temp sensor, ambient
96 #	5304459875	Thermistor, evap sensor, defrost
97 #	5304459876	Thermistor, temp sensor, ambient

WIRING DIAGRAM

