

Frigidaire

Factory Parts Catalog

Product No.	FSC23R5DB5	FSC23R5DW5
Series	counter depth	counter depth
Color	black	white
Volts	115	115
Wiring Diagram	241516401A	241516401A
Owner's Guide	241553001	241553001
Market	North America	North America
Energy Guide	240598644	240598644
Service Data Sheet	241532603	241532603

 **Electrolux**

Electrolux Major Appliances
 North & Latin America
 P.O. BOX 212378
 AUGUSTA, GA 30917

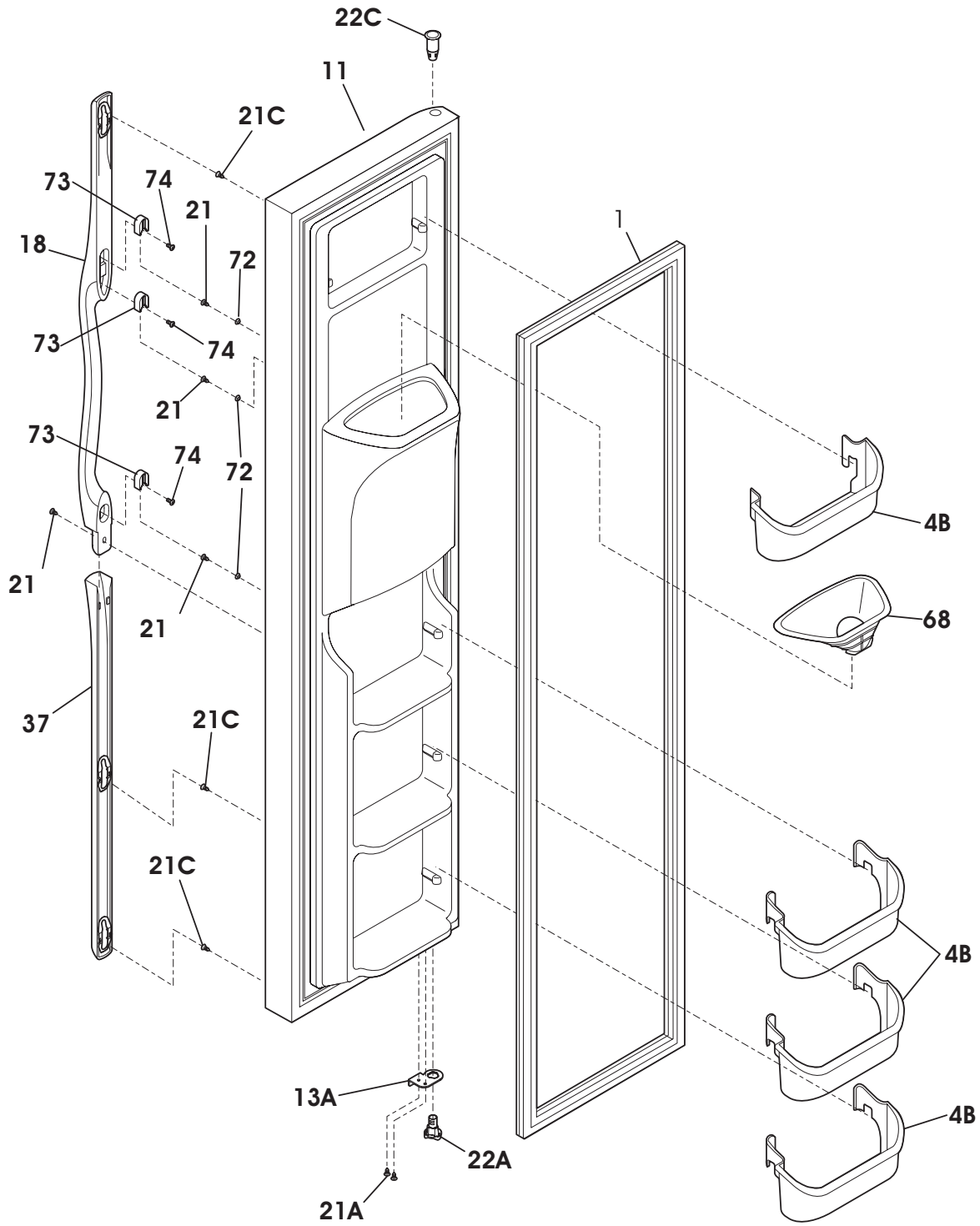
Publication No.
5995437364
 05/05/23
 (EN/SERVICE/KHB)
 357

**SIDE-BY-SIDE
 REFRIGERATOR**

Model No.
FSC23R5D

Copyright © 2005 Electrolux Home Products, Inc.
 All rights reserved.

FREEZER DOOR



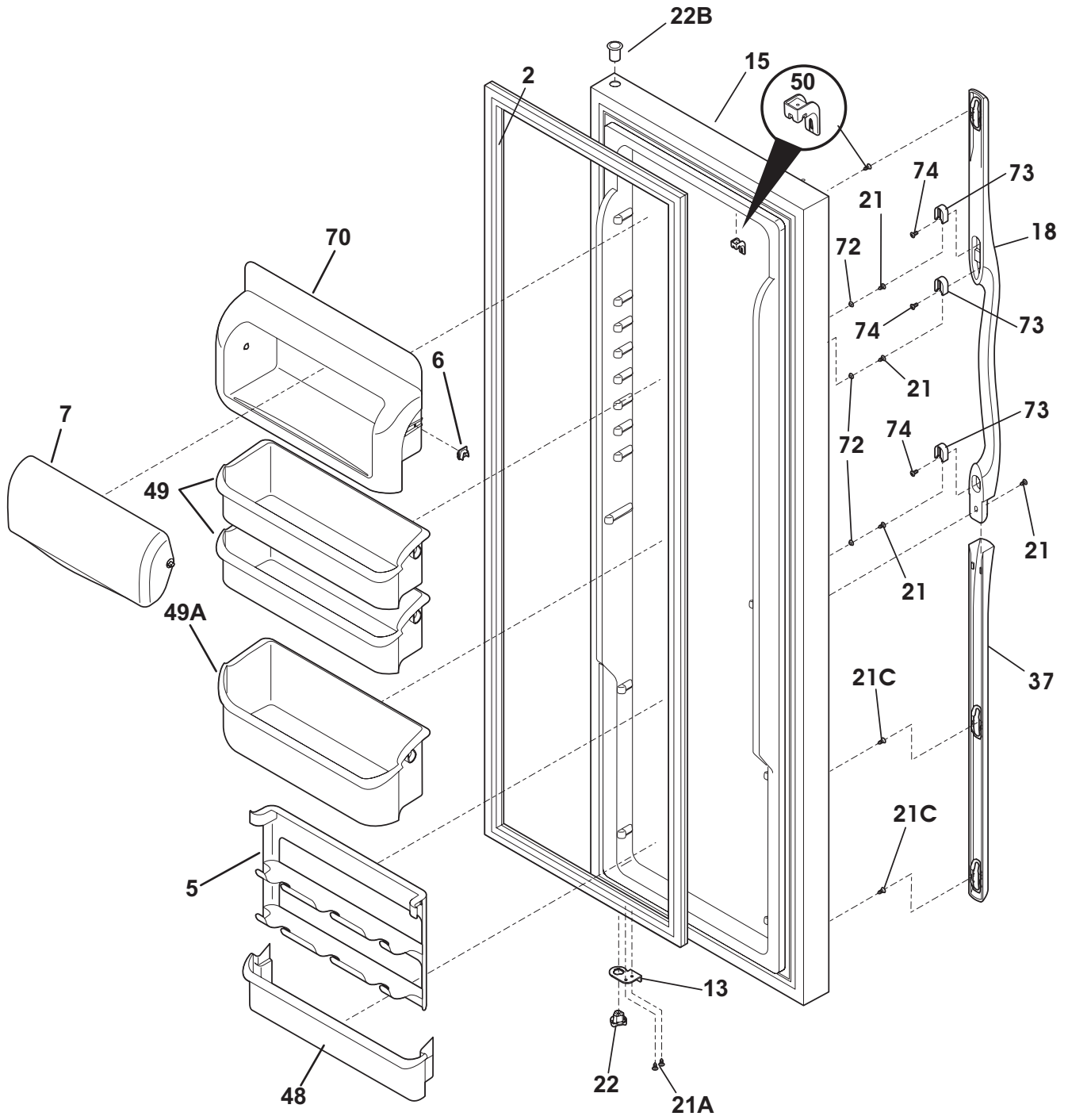
N58FCCBBB3

FREEZER DOOR

Model Index: A FSC23R5D (FSC23R5DB5)
 B FSC23R5D (FSC23R5DW5)

POS. NO	PART NO.		DESCRIPTION
1 #	241510204	A -	Gasket-frzr door, black, magnetic
1 #	241510202	- B	Gasket-frzr door, white, magnetic
4B	241511601	A B	Bin-door
11	240554275	A -	Door-frzr, black, complete assy
11	240554274	- B	Door-frzr, white, complete assy
13A	240537106	A -	Door Stop, black, frzr
13A	240537102	- B	Door Stop, white, frzr
18	240359108	A -	Handle-door, black, LH
18	240359106	- B	Handle-door, white
21	218781100	A B	Screw, pan head, 8-18 x 0.625
21A	5308016566	A B	Screw, hex washer head, 8-15A x 0.625, low profile
21C	240521302	A B	Screw, #8-18 x 3/4
22A	240328204	A -	Bearing-hinge(frz), black, closer
22A	240328202	- B	Bearing-hinge(frz), closer
22C	240328404	A -	Bearing-hinge, black, upper
22C	240328402	- B	Bearing-hinge, natural, upper
37	240359203	A -	Trim-handle, 30.13", black, lower
37	240359201	- B	Trim-handle, 30.13", white, lower
68	241525101	A B	Chute-ice
72	240421701	A B	Button-handle mtg, dovetail
73	218396700	A B	Block-handle mtg, dovetail
74	215503200	A B	Screw, cr pan hd, 10-16 x 0.500
*	240352102	A B	Connector-water, straight
*	240552101	A B	Harness-wiring, door
*	5303918256	A B	Dispenser heater kit

REFRIGERATOR DOOR



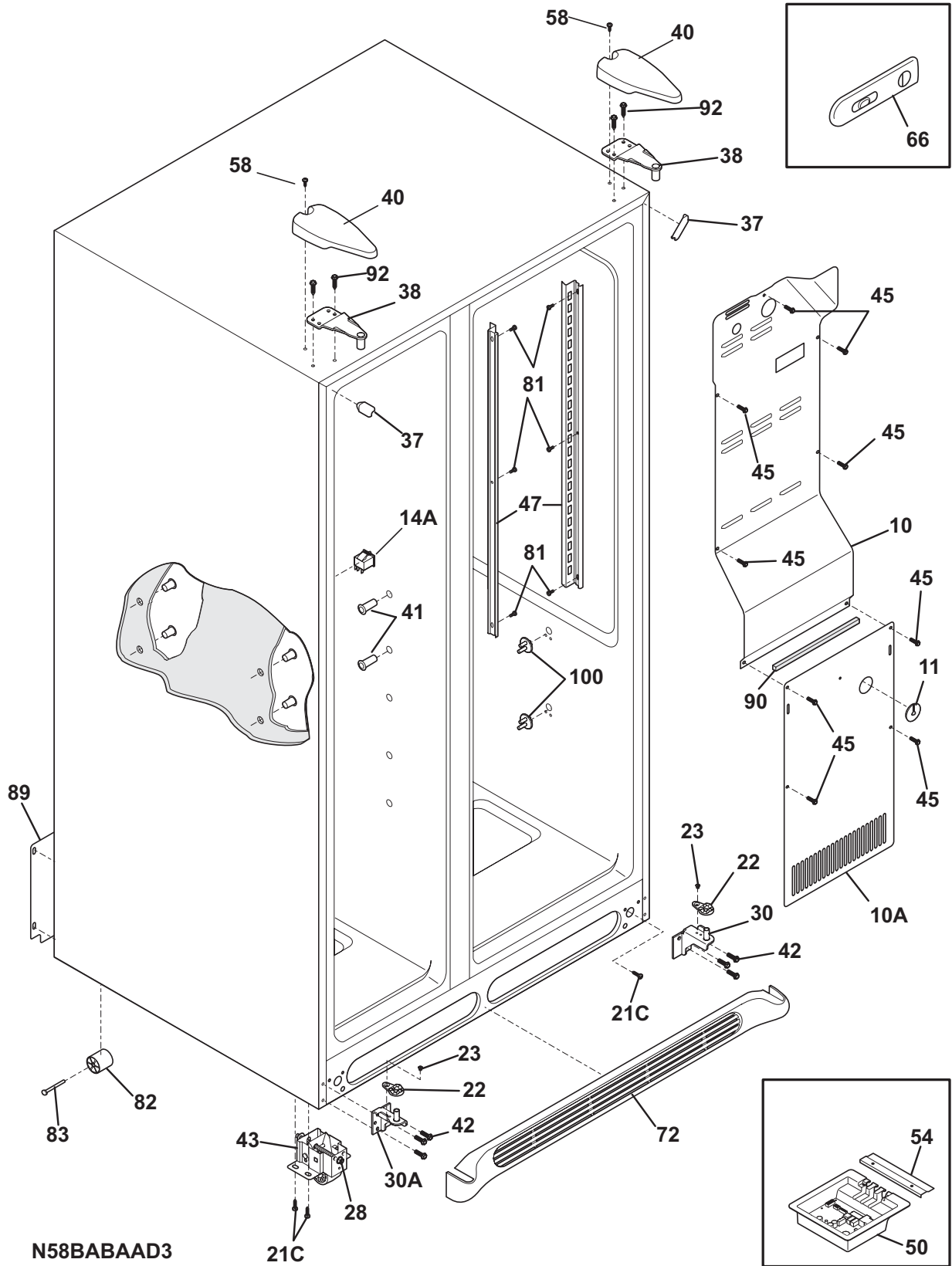
N58RCFCHA1

REFRIGERATOR DOOR

Model Index: A FSC23R5D (FSC23R5DB5)
 B FSC23R5D (FSC23R5DW5)

POS. NO	PART NO.		DESCRIPTION
2 #	241510203	A -	Gasket-refr door, black, magnetic
2 #	241510201	- B	Gasket-refr door, white, magnetic
5	241516101	A B	Rack-can
6	241515901	A B	Lug-dairy compartment
7	241515601	A B	Door-dairy
13	240537105	A -	Door Stop, black, ref
13	240537101	- B	Door Stop, white, ref
15	241534507	A -	Door-refr, black, complete assy
15	241534506	- B	Door-refr, white, complete assy
18	240359103	A -	Handle-door, black, RH
18	240359101	- B	Handle-door, white
21	218781100	A B	Screw, pan head, 8-18 x 0.625
21A	5308016566	A B	Screw, hex washer head, 8-15A x 0.625, low profile
21C	240521302	A B	Screw, #8-18 x 3/4
22	240328203	A -	Bearing-hinge, black, closer
22	240328201	- B	Bearing-hinge(ref), closer
22B	240328403	A -	Bearing-hinge, black, upper
22B	240328401	- B	Bearing-hinge(ref), natural, upper
37	240359203	A -	Trim-handle, 30.13", black, lower
37	240359201	- B	Trim-handle, 30.13", white, lower
48	241511706	A B	Bin-door, ref
49	241505306	A B	Bin-door, 2-liter
49A	241505506	A B	Bin-door
50	241508401	A B	Cover-magnet
70	241515801	A B	Compartment-dairy, removable
72	240421701	A B	Button-handle mtg, dovetail
73	218396700	A B	Block-handle mtg, dovetail
74	215503200	A B	Screw, cr pan hd, 10-16 x 0.500

CABINET

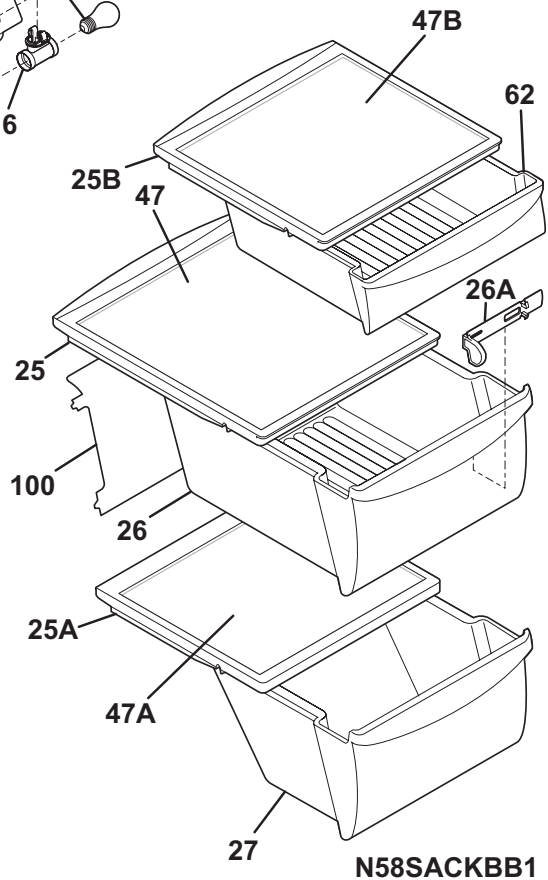
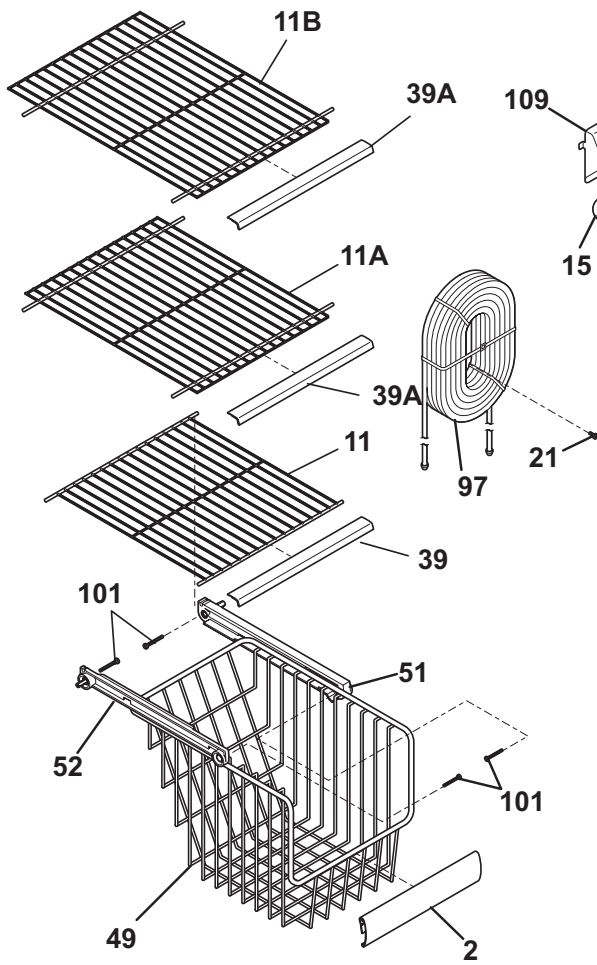
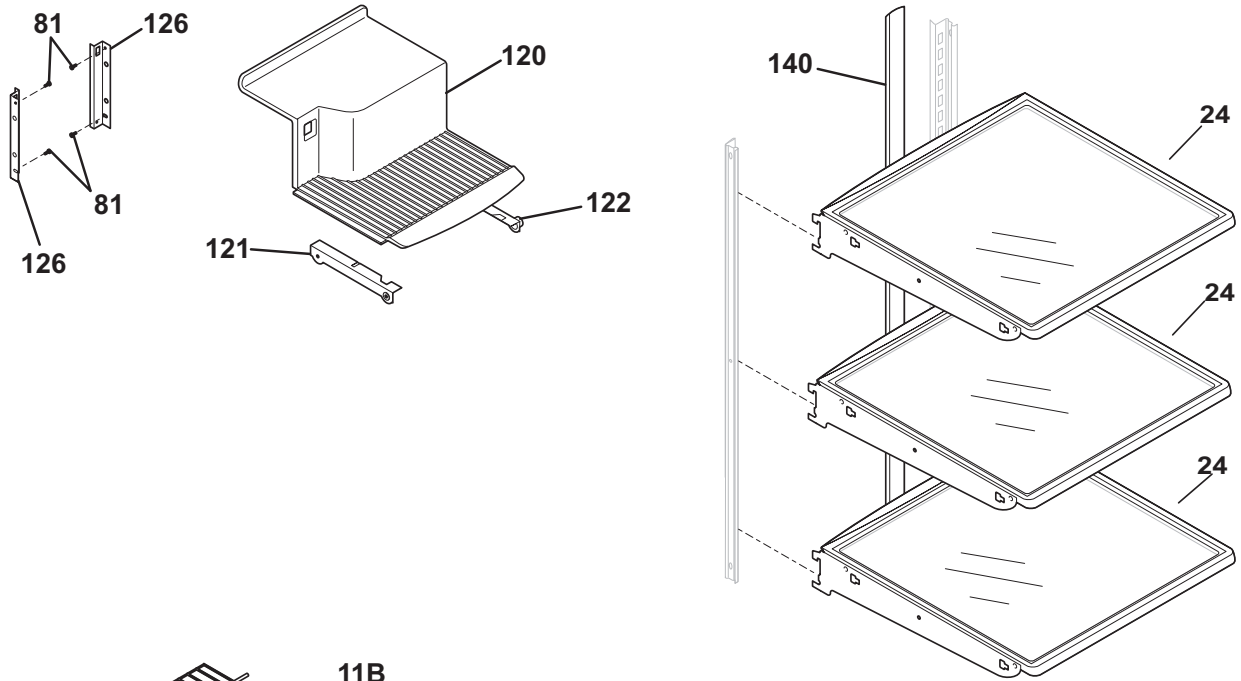


CABINET

Model Index: A FSC23R5D (FSC23R5DB5)
B FSC23R5D (FSC23R5DW5)

POS. NO	PART NO.		DESCRIPTION
10	241509802	A B	Cover-air duct
10A	240475907	A B	Cover-evap coil, lower
11	5303208309	A B	Plug-hole, factory test
14A	241547901	A B	Switch-light/lamp, frzr door
21C	218252200	A B	Screw, #8 truss hd, 10-32CA x 0.500
22	240457702	A -	Plate-door closer
22	240457701	- B	Plate-door closer
23	240402701	A B	Screw-#10-32 x 1/4 flat hd
28	240335501	A B	Bolt-roller adj, hex washer head, 1/4-20 x 4.020, (2), special
30	241603701	A B	Bracket-lower hinge, ref
30A	241603702	A B	Bracket-lower hinge
37	240337603	A -	Trim-cabinet corner, black, (2)
37	240337601	- B	Trim-cabinet corner, white, (2)
38	240327201	A B	Bracket-upper hinge
40	240327007	A -	Cover-upper hinge, black
40	240327005	- B	Cover-upper hinge, white
41	241550801	A B	Grommet-shelf mtg, 1.40" long
41*	241550701	A B	Grommet-shelf mtg, .96" long
42	240578901	A B	Screw-hinge mtg, hex head, 1/4-20 x 5/8
43	240335003	A B	Roller Assy, adjustable, front, (2)
45	241500301	A B	Screw, hex washer head, 8-18AB x 0.500
47	241513001	A B	Channel-shelf mtg, side, (2)
50	241511101	A B	Board-main power
54	241532401	A B	Channel
58	218781100	A B	Screw, pan head, 8-18 x 0.625
66	241513601	A B	Damper Assy
72	241521610	A -	Grille/Kickplate, black
72	241521608	- B	Grille/Kickplate, white
81	5308016566	A B	Screw, hex washer head, 8-15A x 0.625, low profile
82	5304418225	A B	Roller, compressor base, rear, (2)
83	5303316859	A B	Rivet, flat head, 1/4 OD x 1-3/4, roller pin
89	241574602	A B	Cover access
90	218249808	A B	Seal-coil cover
92	216850900	A B	Screw, hex washer hd, 1/4 x 7/8, hinge mtg
100	240423701	A B	Support, crisper cover, front, (4)
100*	240350802	A B	Support, crisper cover, rear, (4)
*	240479601	A B	Plug, button, cab liner holes, (2)
*	241591701	A B	Louver
*	5303305345	A -	Paint, touch-up, black
*	5303305324	- B	Paint, touch-up, white

SHELVES



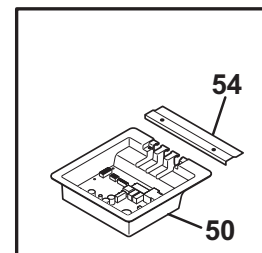
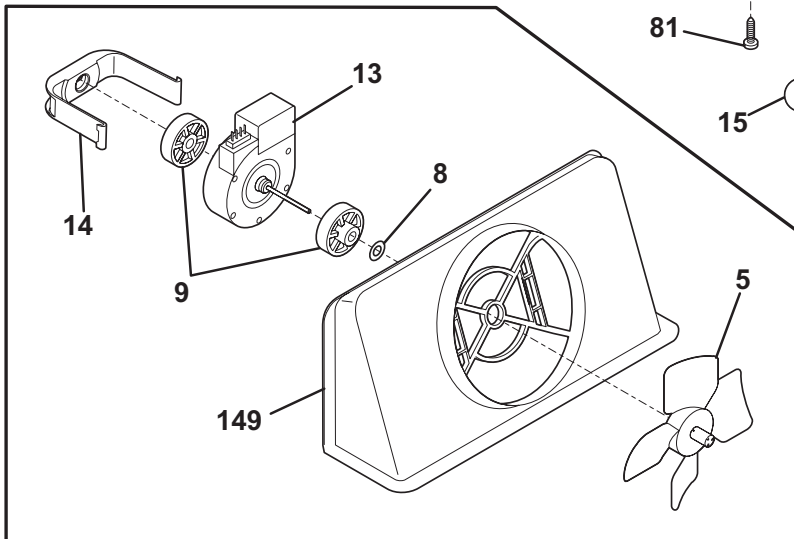
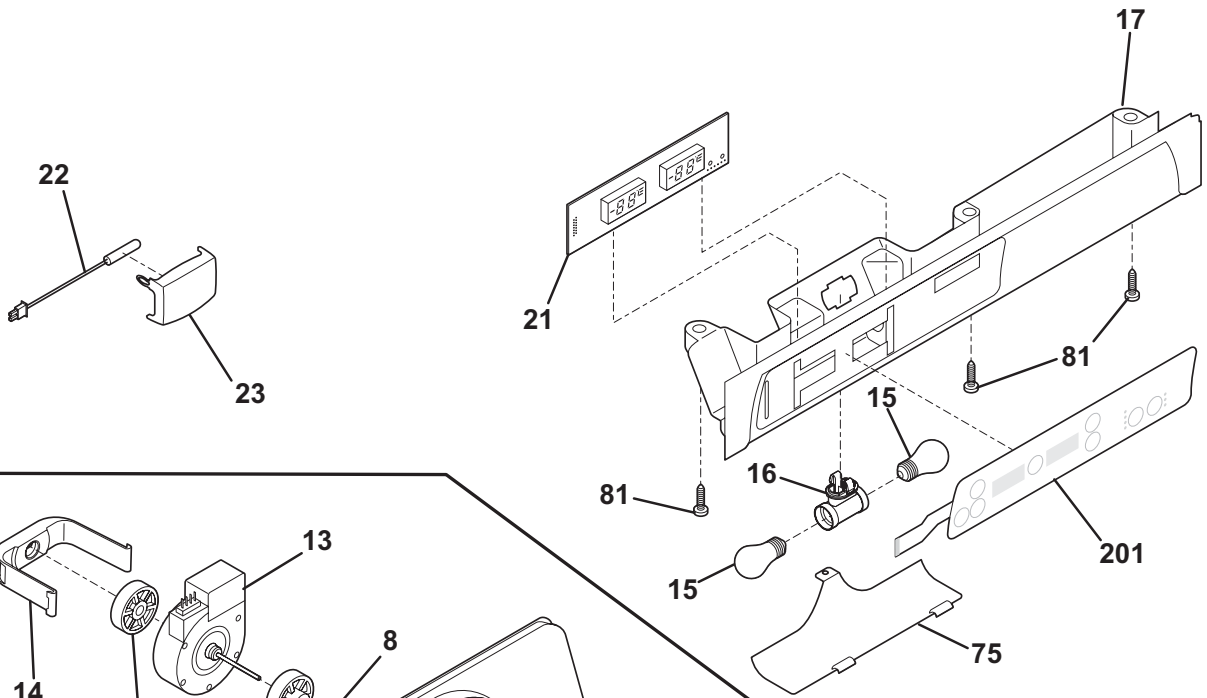
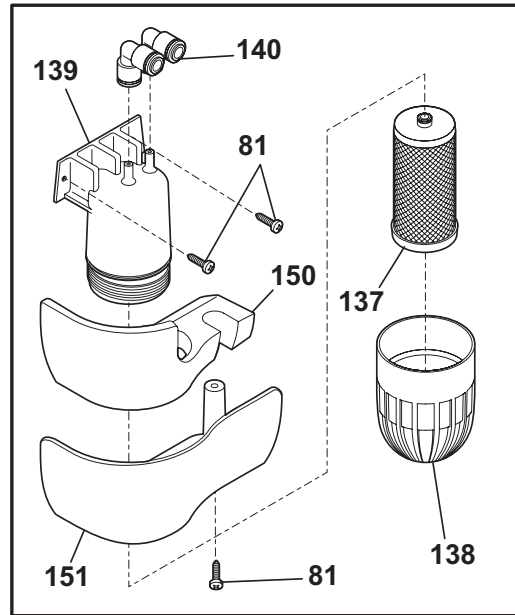
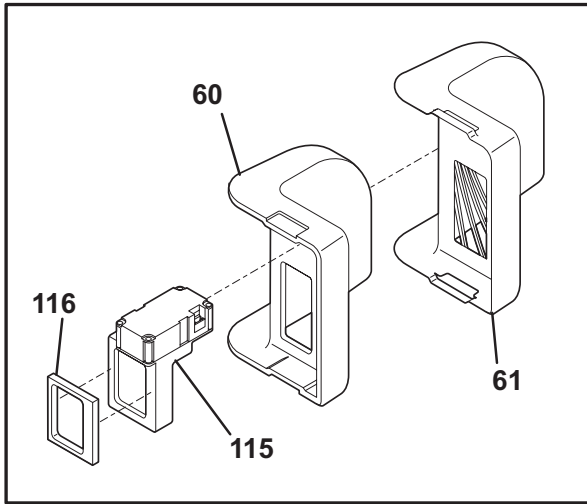
N58SACKBB1

SHELVES

Model Index: A FSC23R5D (FSC23R5DB5)
B FSC23R5D (FSC23R5DW5)

POS. NO	PART NO.		DESCRIPTION
2	241510605	A B	Trim-basket
11	240338805	A B	Shelf-freezer, flip-up
11A	240338705	A B	Shelf-freezer, fixed wire
11B	240338706	A B	Shelf-freezer, fixed wire
15	241552801	A B	Light Bulb
16	241507803	A B	Socket-light
16*	241523201	A B	Harness-wiring
21	5303001001	A B	Screw, hx wshr hd sems, 8-15A x 0.625
24	240355240	A B	Shelf-"Spill-Safe", fixed, (3)
25	240599301	A B	Cover-crisper pan, upper
25*	240362101	A B	Clip-slide, cover-crisper
25A	240350902	A B	Cover-crisper pan, lower
25B	240599801	A B	Cover-meat pan
26	240351005	A B	Pan-crisper, upper
26*	240349801	A B	Clip-slide, pan-crisper
26A	240362201	A B	Control-humidity
27	240351206	A B	Pan-crisper, lower
39	240430709	A B	Trim-shelf, 11.60", front
39A	240430710	A B	Trim-shelf, 12.86", front
47	240350633	A B	Insert-pan cover, glass
47A	240350603	A B	Insert-pan cover, glass
47B	240443360	A B	Insert-pan cover, glass
49	241515001	A B	Basket-sliding
51	241514501	A B	Hanger-basket, RH
52	241514601	A B	Hanger-basket, LH
62	240599701	A B	Pan-meat
81	5308016566	A B	Screw, hex washer head, 8-15A x 0.625, low profile
97	241532003	A B	Water Tank
100	241549901	A B	Cover-water tank
101	218493100	A B	Screw, hex washer head, 8-18AB x 1-3/4
109	241513202	A B	Base-crisper light socket
120	241504501	A B	Shelf-ice cream
121	241504701	A B	Rail-ice cream shelf, LH
122	241504702	A B	Rail-ice cream shelf, RH
126	241630701	A B	Channel, auger mtg, LH
126	241630702	A B	Channel, auger mtg, RH
140	240430504	A B	Channel, wtr tube cover

CONTROLS



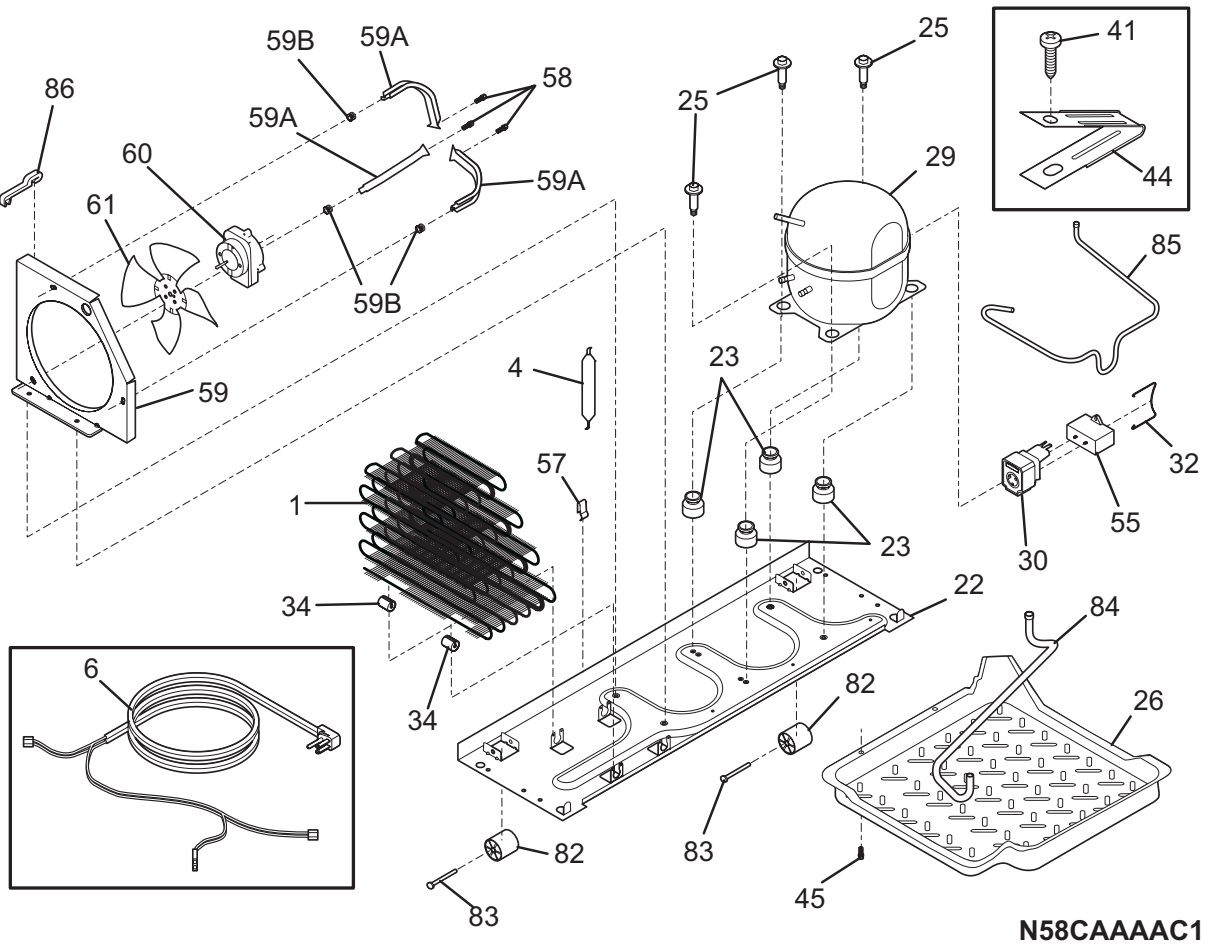
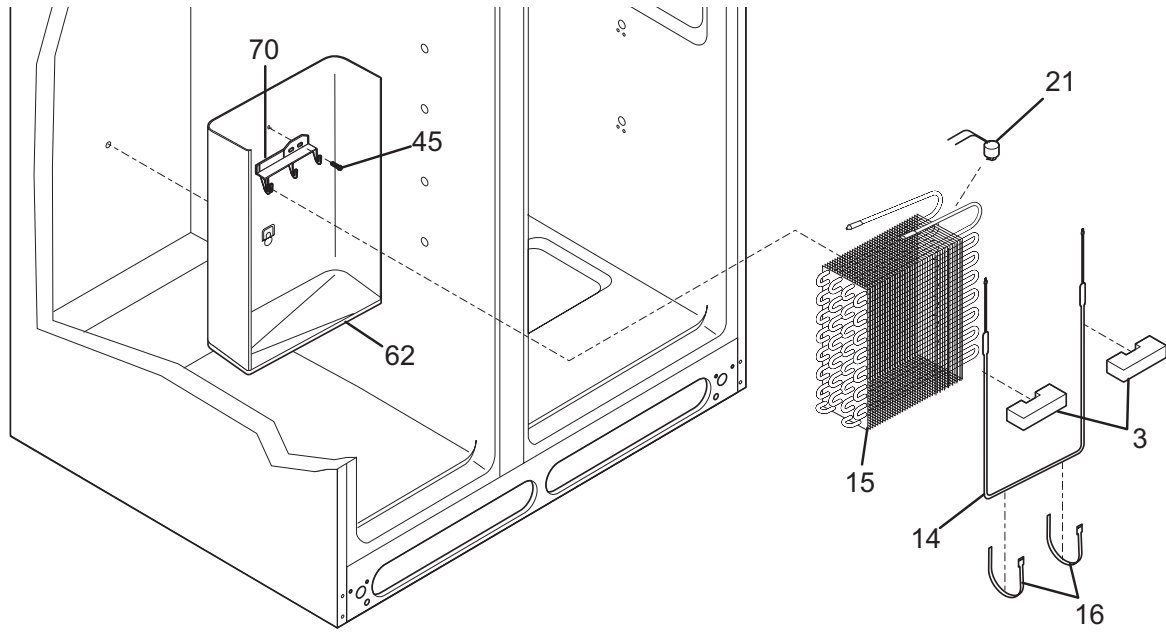
N58TAAAD2

CONTROLS

Model Index: A FSC23R5D (FSC23R5DB5)
 B FSC23R5D (FSC23R5DW5)

POS. NO	PART NO.		DESCRIPTION
5 #	5308000010	A B	Fan Blade, red, evaporator fan
8	215474201	A B	Washer, "slinger", nylon, evap fan shaft
9	241518301	A B	Bushing, motor mounting
13	241509401	A B	Motor, evaporator fan
13*	241510501	A B	Seal-diffuser
14	241517701	A B	Clip, evap fan motor
15	241552801	A B	Light Bulb
16	241507803	A B	Socket-light
17	241522801	A B	Box-control, front
17*	241510801	A B	Harness-wiring
21 #	240596801	A B	Control, electronic
22	240597201	A B	Sensor
23	241512901	A B	Cover-sensor
50	241511101	A B	Board-main power
50*	241524801	A B	Seal-Mother Board Housing
50*	241532501	A B	Clip-harness
54	241532401	A B	Channel
60	241510401	A B	Diffuser-air, top
61	241511201	A B	Cover
75	241517801	A B	Shield-light
81	5308016566	A B	Screw, hex washer head, 8-15A x 0.625, low profile
115	241518501	A B	Damper, motorized
116	241518601	A B	Seal-damper, foam
137	240389101	A B	Filter, water, carbon canister, rear, with o'rings
137*	218710300	A B	Wrench-filter
138	240434401	A B	Cup-water filter
138*	218904301	A B	O-ring, wtr filter cup
139	240434301	A B	Housing-water filtr
140	240545201	A B	Elbow-water tube
149	241517601	A B	Shroud-evap fan mtg
149*	241528301	A B	Seal, foam, evap fan assy
150	240394102	A B	Insulation-water filter cover
151	240376002	A B	Cover-water filter
201	240598701	A B	Switch-membrane
*	240388601	A B	Elbow-water tube
*	241537401	A B	Shield

SYSTEM



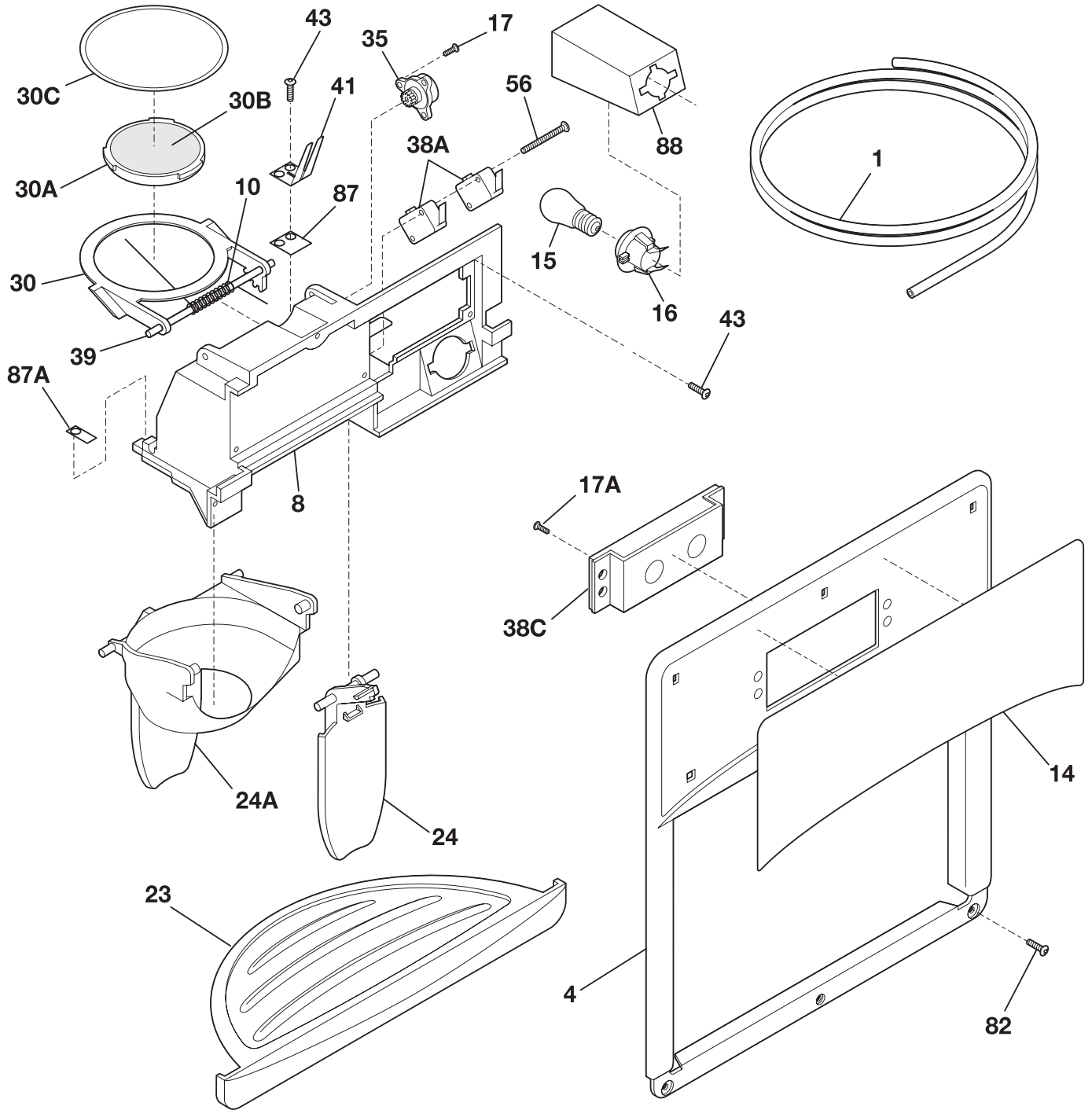
N58CAAAC1

SYSTEM

Model Index: A FSC23R5D (FSC23R5DB5)
B FSC23R5D (FSC23R5DW5)

POS. NO	PART NO.		DESCRIPTION
1	240333603	A B	Condenser
3	218679607	A B	Block-evap coil, styrofoam, (2)
4 #	218944001	A B	Drier-filter, R134a System
6 #	241516901	A B	Cord-service
6*	241510801	A B	Harness-wiring
6*	241519901	A B	Harness-wiring
6*	241635601	A B	Harness-wiring, machine compt
14 #	240316107	A B	Heater-defrost
15 #	5303918284	A B	Evaporator Kit
16	5308000110	A B	Strap-evap/heater, aluminum, (2)
21	5303918214	A B	Thermostat-defrost, kit
22	240330008	A B	Base-compressor mtg
22*	218252200	A B	Screw, #8 truss hd, 10-32CA x 0.500
23	218513300	A B	Grommet-compr mtg, (4)
25	240491501	A B	Screw-compressor mtg, 1/4-28 x 1.16, shoulder, typ CF
26	241637301	A B	Pan-defrost drain
29	5303918314	A B	Compressor, w/o electricals
30	241527803	A B	Starter-TSD
32	241527901	A B	Clamp, elec cont mtg, compressor
34	240405201	A B	Grommet, rubber, black, cond tube/wire
41	240555001	A B	Screw-#8-32 X 3/8
44	215174700	A B	Clamp-service cord, strain relief, galv steel
45	5308016566	A B	Screw, hex washer head, 8-15A x 0.625, low profile
55	218909915	A B	Capacitor-run, 220 VAC, 15 microfarad
57	240542601	A B	Clip-wiring harness
58	240433201	A B	Screw, hex washer head, 8-18 x 0.375
59	240315502	A B	Shroud-cond fan
59*	240346701	A B	Tape-foam seal, shroud
59*	240359401	A B	Screw-fan shroud, (2)
59A	240346501	A B	Bracket-support, cond mtr, (3)
59B	240346601	A B	Grommet-bracket, (3)
60 #	241584301	A B	Motor-condenser fan
61	241639501	A B	Blade-condenser fan
62	240429402	A B	Trough-drain
70	218990801	A B	Bracket-evap/cvr mtg
82	5304418225	A B	Roller, compressor base, rear, (2)
83	5303316859	A B	Rivet, flat head, 1/4 OD x 1-3/4, roller pin
84	5304421068	A B	Tube-drain, lower
85	240553501	A B	Tube-connector, suction
86	240409302	A B	Spacer-cond tube, black
* #	5303918300	A B	Heat Exchanger Kit, suction line
*	5303918222	A B	Hot Tube Repair Kit, service

ICE & WATER DISPENSER



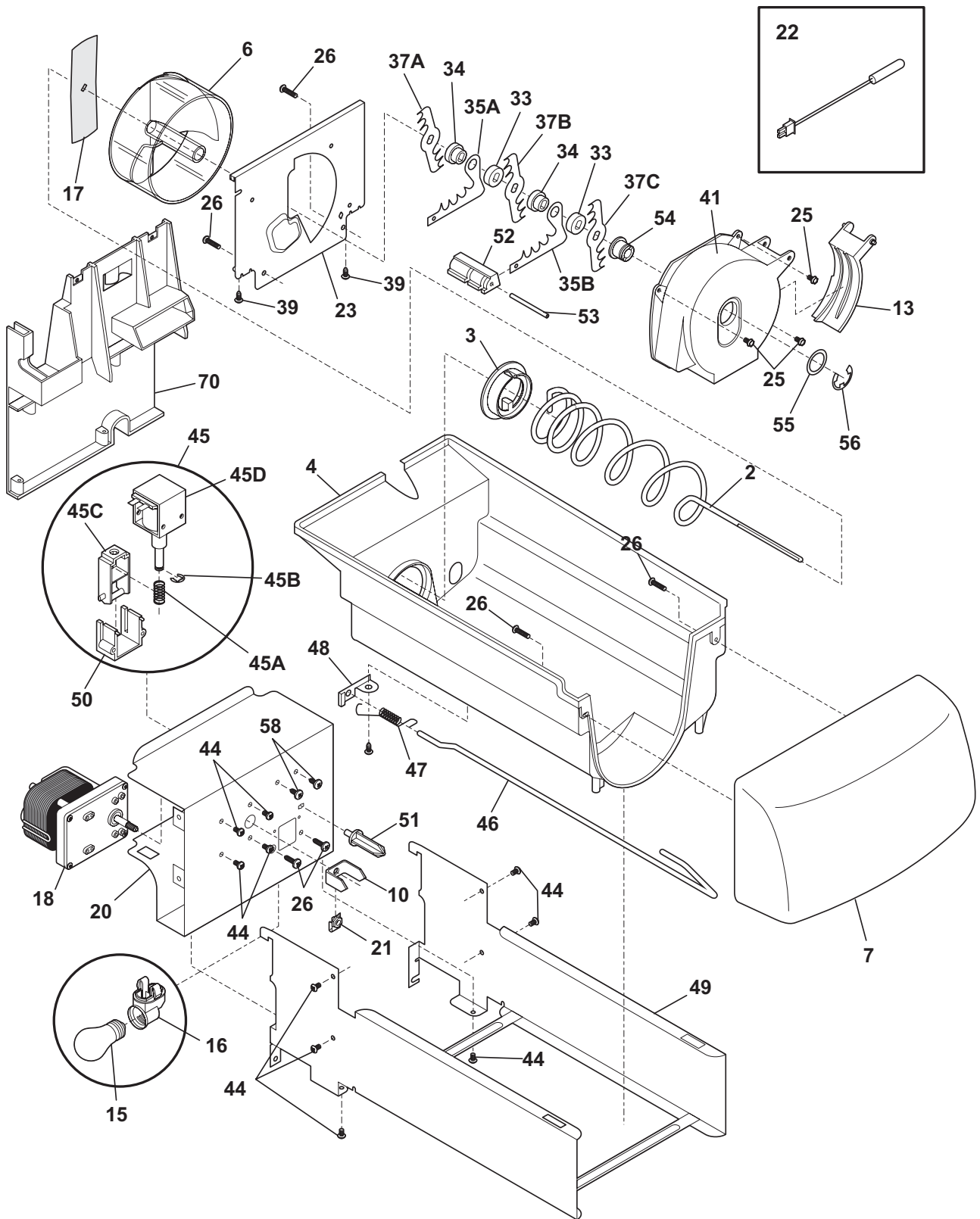
N58XDAAA1

ICE & WATER DISPENSER

Model Index: A FSC23R5D (FSC23R5DB5)
 B FSC23R5D (FSC23R5DW5)

POS. NO	PART NO.		DESCRIPTION
1	218976409	A B	Tube-water-DOOR
1*	218976901	A B	Tube-water inlet, inlet valve, to ice maker
1*	218976904	A B	Tube-water inlet, valve to filter
1*	218976912	A B	Tube-water inlet, valve to door
1*	240561701	A B	Seal-water inlet, inlet valve, to ice maker
4	5304433186	A -	Cover-module, black
4	5304433188	- B	Cover-module, white
8	5304422013	A -	Module-dispenser
8	5304422030	- B	Module-dispenser
10	5304426649	A B	Spring-torsion
14	240570206	A -	Label-module cover, black
14	240570204	- B	Label-module cover, white
15	5304421616	A B	Light Bulb
16	240548901	A B	Socket-light
17	5304421619	A B	Screw
17A	5304433185	A B	Screw, switch mtg.
23	240323603	A -	Drip Tray, black
23	240323601	- B	Drip Tray, white
24	5304422026	A -	Actuator-water, black
24	5304421825	- B	Actuator-water, white
24A	5304422025	A -	Actuator-ice, black
24A	5304421826	- B	Actuator-ice, white
30	5304421628	A B	Door Assy-ice chute
30A	5304421624	A B	Door center
30B	5304421625	A B	Insulation-door
30C	5304421629	A B	Door seal
35	5304421620	A B	Damper-rotary
38A#	5304421617	A B	Switch-micro, single pole, double throw
38A*	5304430839	A B	Harness-wiring
38C	5304436275	A B	Switch
38C*	5304430837	A B	Harness-wiring
39	5304421627	A B	Pin-hinge
41	5304421829	A B	Spring-actuator
43	215296300	A B	Screw, plask h/l, #6 x 3/8
56	5304421830	A B	Screw-micro switch, pan head
82	240363401	A B	Screw-#8-18 X 1/2, #6 hd plask
87	5304421622	A B	Bearing Plate
87A	5304421621	A B	Bearing Plate
88	5304421615	A B	Shield-light
*	218515401	A B	Clip
*	5303918256	A B	Dispenser heater kit

ICE CONTAINER

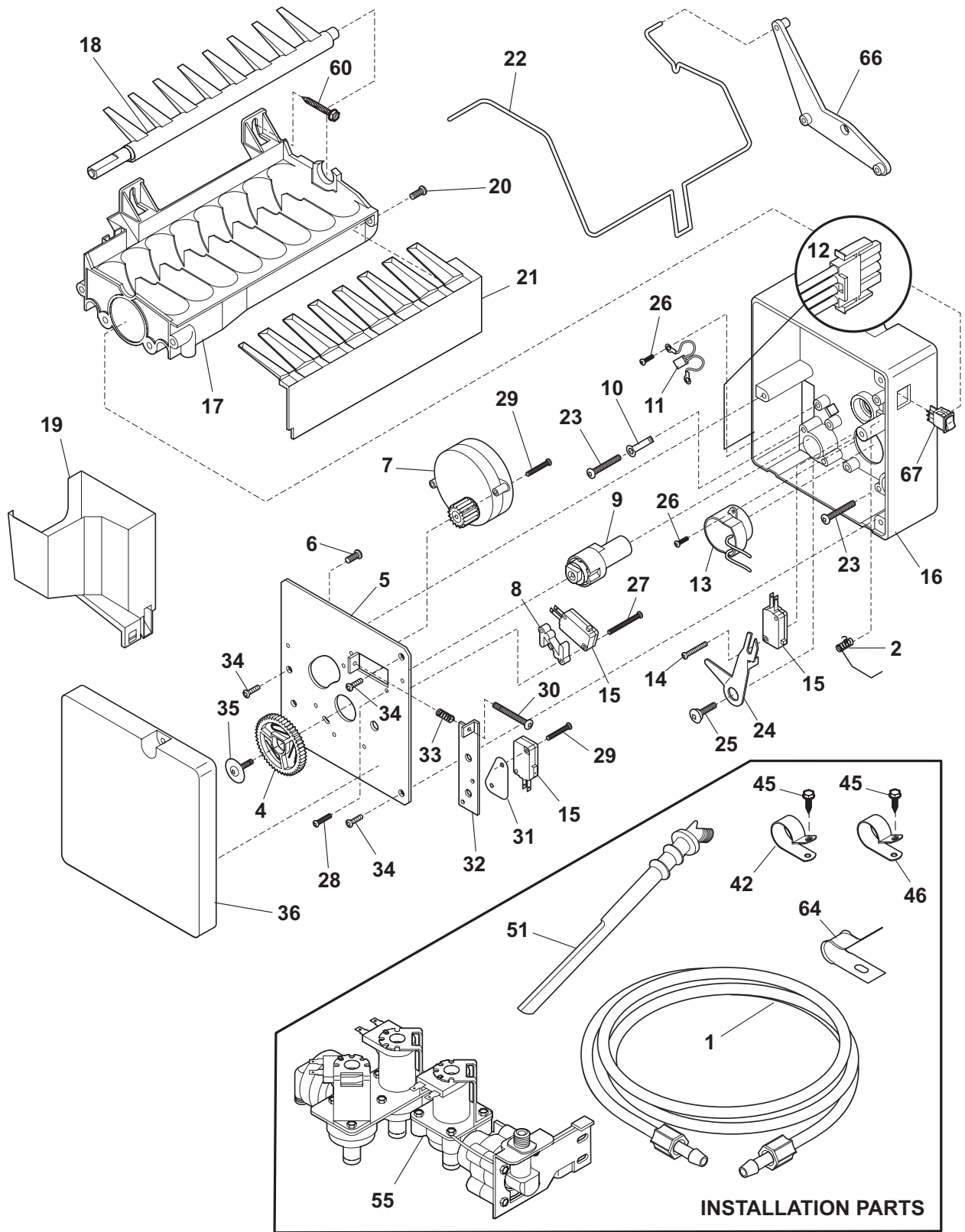


N58YDAAAC0

ICE CONTAINER

		<i>Model Index:</i>	
		A FSC23R5D (FSC23R5DB5)	
		B FSC23R5D (FSC23R5DW5)	
POS. NO	PART NO.		DESCRIPTION
2	5304436634	A B	Auger-ice
3	5304404343	A B	Cam-drive
4	241515201	A B	Container-ice, bucket only
6	5304404346	A B	Drum-ice disp
7	241515301	A B	Front-ice container
10	241624801	A B	Bar-drive
13	5304404359	A B	Gate
15	241555401	A B	Light Bulb
16	241559801	A B	Socket-light
17	5304404345	A B	Drive Blade
18 #	5304440392	A B	Motor-auger
18*	241522901	A B	Harness-wiring, icmkr/container
20	5304404332	A B	Cover-motor
21	215285100	A B	Nut-drive
22	240597201	A B	Sensor
22*	241519401	A B	Clip, sensor
23	5304404347	A B	Plate-front
25	5304404362	A B	Screw, hex washer head, 8-32T x 0.375
26	215503200	A B	Screw, cr pan hd, 10-16 x 0.500
33	5304404351	A B	Spacer
34	5304404349	A B	Spacer
35A	5304404353	A B	Fixed Blade, round
35B	5304404352	A B	Fixed Blade, square
37A	5304404348	A B	Blade, crusher #1
37B	5304404350	A B	Blade, crusher #2
37C	5304404356	A B	Blade, crusher #3
39	5304404365	A B	Screw
41	5304404358	A B	Housing-crusher
44	218359200	A B	Screw, pan head, 8-32 x 0.250
45 #	5304404333	A B	Solenoid Assy
45A	5304406816	A B	Spring-solenoid
45B	5304406817	A B	E-Ring-solenoid
45C	5304406818	A B	Actuator-solenoid
45D	5304406819	A B	Solenoid
46	5304436635	A B	Control Rod
47	5304404342	A B	Spring-control rod
48	5304404340	A B	Bracket-control rod
48*	5304404364	A B	Screw-bracket
49	5304436702	A B	Rail Assy
50	5304404334	A B	Guide-solenoid
51	5304404336	A B	Rotation Stop
52	5304404354	A B	Spacer-fixed blades
53	5304404355	A B	Pin-spiral, fixed blades
54	5304404357	A B	Nut-auger
55	5304404360	A B	Washer
56	5304404361	A B	E-ring
58	5304404331	A B	Screw-solenoid
70	241504601	A B	Plate-mounting
70*	215005100	A B	Screw, hanger/rlr mtg, 8-10 x 0.438
70*	241551601	A B	Screw, hex head, 8-18B x 0.875
*	241504301	A B	Ice Container Assy, w/moving parts

ICE MAKER

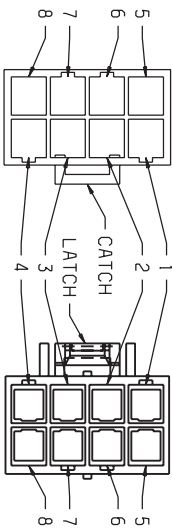
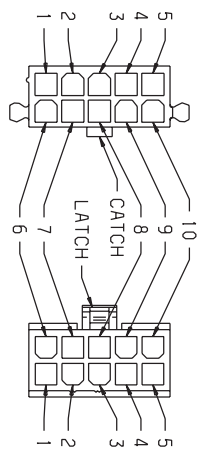
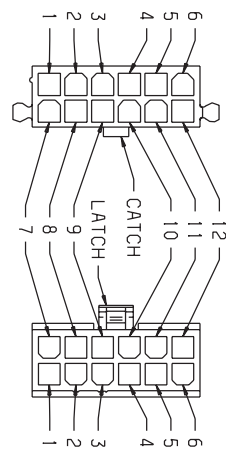
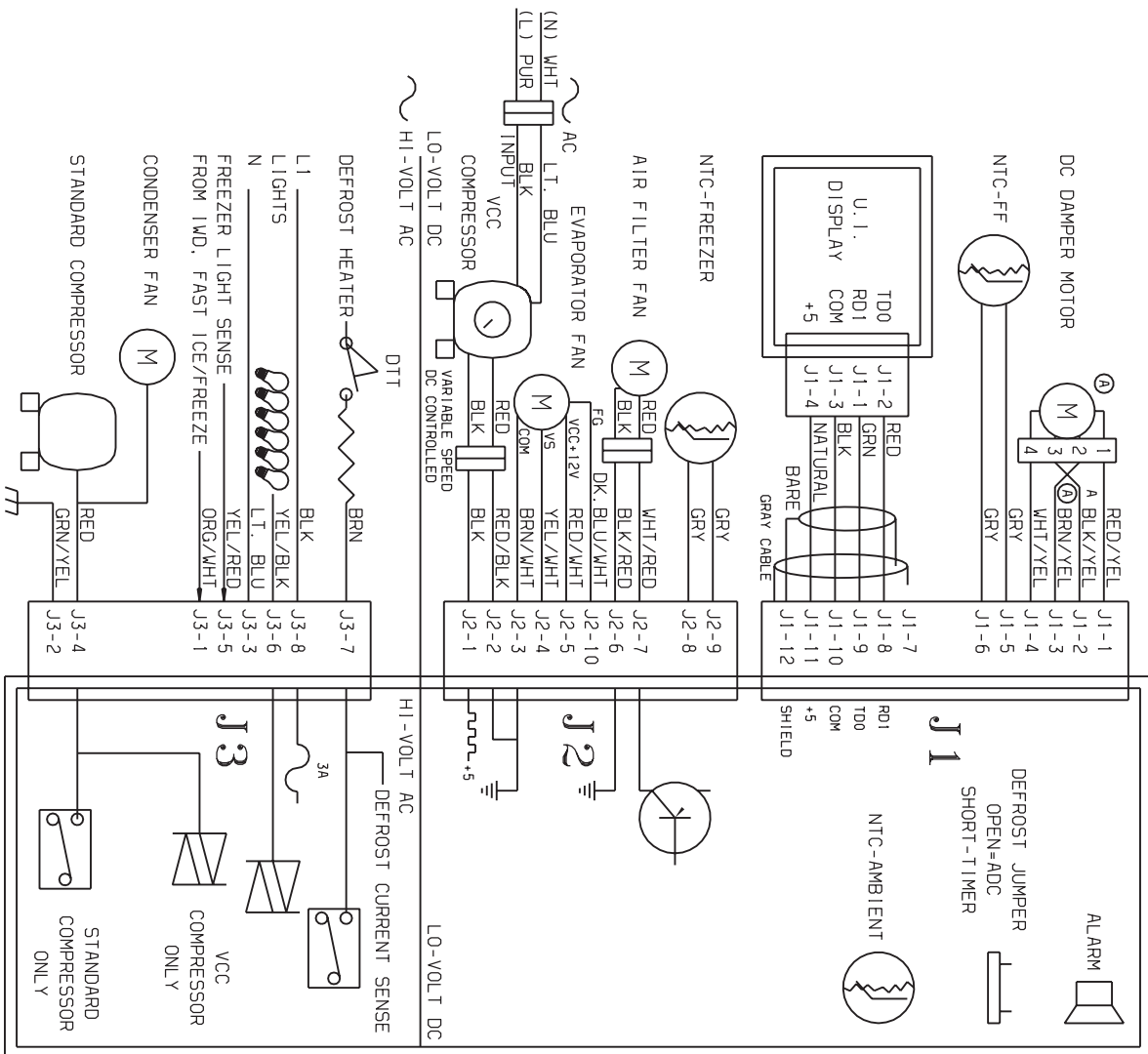


N58I115T

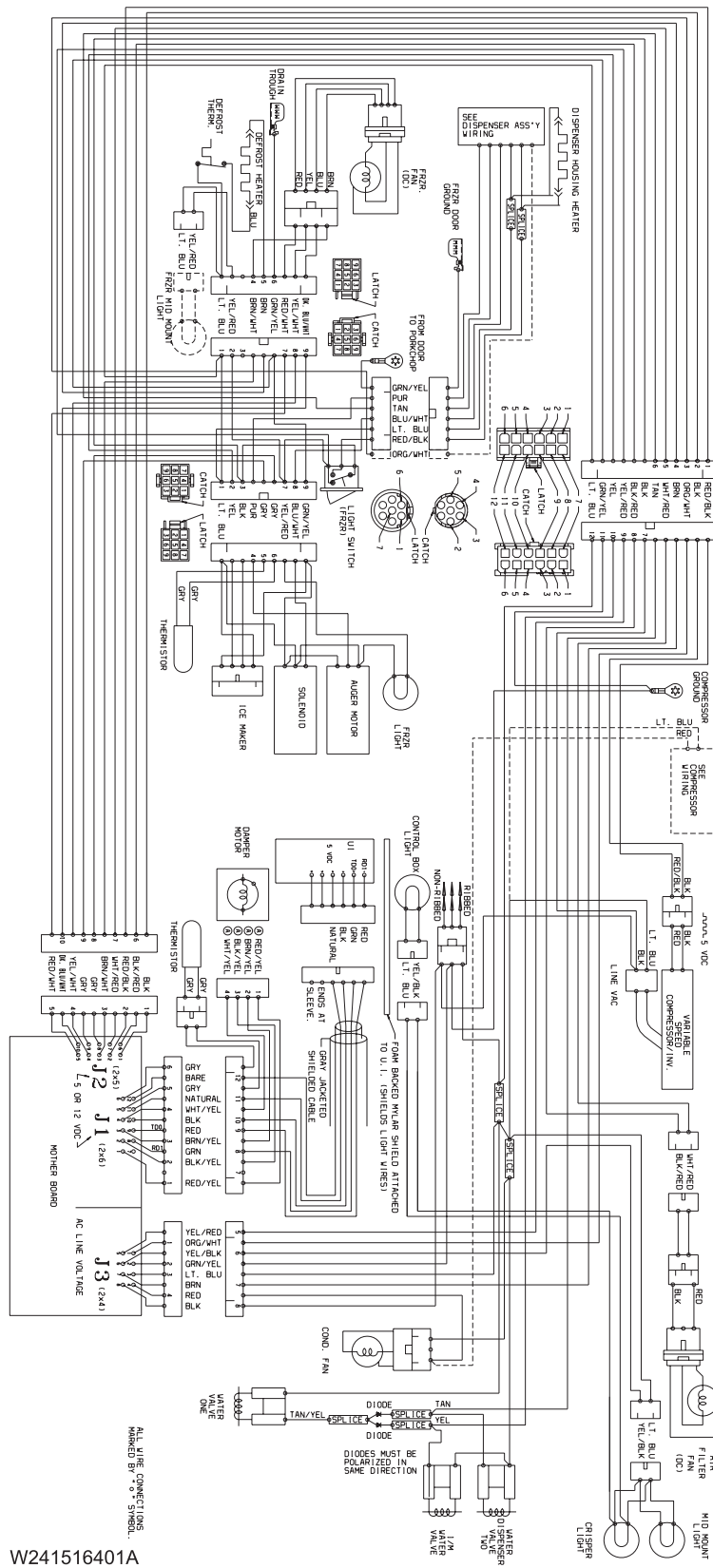
ICE MAKER

<i>Model Index:</i>		A FSC23R5D (FSC23R5DB5)	
		B FSC23R5D (FSC23R5DW5)	
POS. NO	PART NO.		DESCRIPTION
1	218976409	A B	Tube-water-DOOR
1*	218976901	A B	Tube-water inlet, inlet valve, to ice maker
1*	218976904	A B	Tube-water inlet, valve to filter
1*	218976912	A B	Tube-water inlet, valve to door
1*	241604801	A B	Seal-water inlet, inlet valve, to ice maker
2	5304436616	A B	Spring, torsion
4	3206301	A B	Gear
5	5304436604	A B	Plate-mounting
6	3206305	A B	Screw-ground wire, 8-32 x 0.250
7 #	5304436619	A B	Motor-ice maker
8	3206312	A B	Spacer-hold switch
9	5304436610	A B	Detent
10	3206315	A B	Clamp
11 #	5304436618	A B	Thermal Cutoff, ICE MAKER, complete assy
12	5304436614	A B	Harness-wiring
13	5304436613	A B	Thermostat, ICE MAKER
14	5304420652	A B	Screw, 4 x 0.750, switch mtg.
15 #	3206324	A B	Switch, (3)
16	5304436609	A B	Housing, control
17 #	5304436617	A B	Mold-ice maker, with heater
18	5304436607	A B	Ejector-ice
18*#	240352601	A B	Wiring Harness, internal, with plug
19	5304436606	A B	Cup-water inlet
20	5304408581	A B	Screw, 8-32 x 0.375
21	5304436608	A B	Ice Stripper
22	5304436602	A B	Shut-off Arm
23	5304408582	A B	Screw, 8-32 x 0.875, mold-to-support, (3)
24	3206335	A B	Lever Arm
25	5304404362	A B	Screw, hex washer head, 8-32T x 0.375
26	5304420654	A B	Screw-thermo/sprt, 4-24 x 0.375, (4)
27	3206338	A B	Screw, 4-40 x 1.000, hold switch mtg, (2)
28	3206339	A B	Screw-timing stop, 4-40 x 0.375
29	3206323	A B	Screw, 4-24 x 0.750, (6)
30	3206341	A B	Screw-timing adj, 8-32 x 1.000
31	3206342	A B	Insulator
32	3206343	A B	Plate-valve switch
33	5304436615	A B	Spring-thermostat
34	5304420655	A B	Screw, plazscrew, 8-10, (3)
35	5304408585	A B	Screw
36	5304436605	A B	Cover-ice maker
42	5303001199	A B	Clamp-wiring harness, strain relief, galv steel
42*	218515402	A B	Clip, (2), tube mtg.
45	5308016566	A B	Screw, hex washer head, 8-15A x 0.625, low profile
46	5303001193	A B	Clamp, .50 ID, steel, water tube
51	241523502	A B	Tube-water fill, extension
55 #	240531101	A B	Valve-water, triple solenoid
55*	218709100	A B	Screw, hex head, 10-32 x 0.500
55*	240363601	A B	Screw-shoulder
55*	240542901	A B	Cap-water valve
60	5303207328	A B	Screw, hex washer head, 8-15A x 1.000, (2)
64	5303001549	A B	Clamp, 0.31 ID, steel, copper wtr line
66	5304436611	A B	Bracket-ice maker
67	5304436612	A B	Switch, on/off
*	218888001	A B	Adapter-water supply, nut & sleeve, compression ftg
*	241583301	A B	Deflector-air, ICE MAKER
*	241627701	A B	Ice Maker, Radius Cube, 115 V, no instl parts

WIRING SCHEMATIC



WIRING DIAGRAM



Functional Parts
 * Non-Illustrated Parts