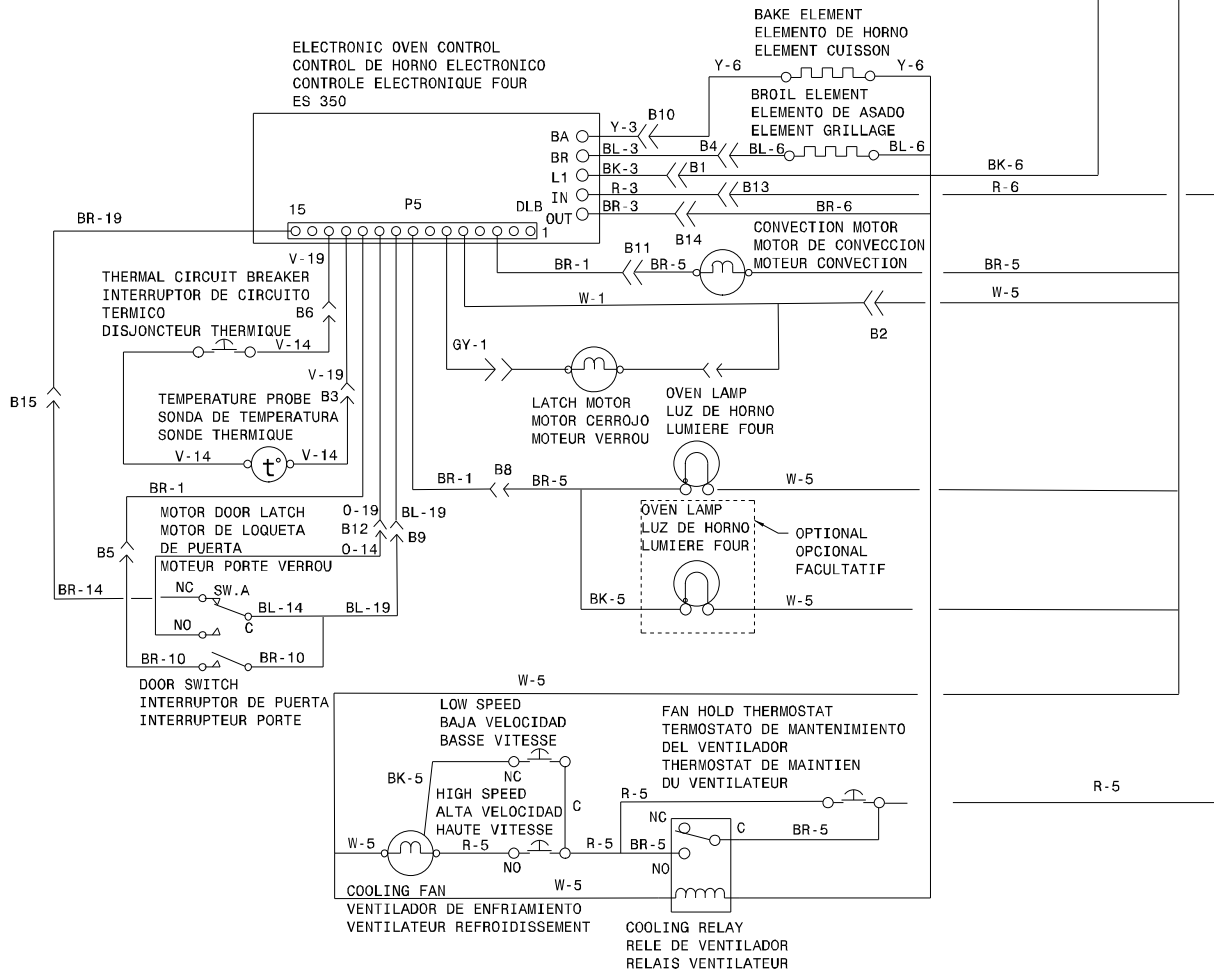


**OVEN CIRCUIT//CIRCUITO DE HORNO//CIRCUIT FOUR**

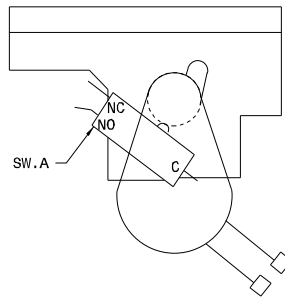


**COLORS/CODIGOS/CODE COULEUR**

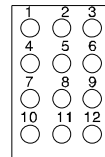
BK. - BLACK/NEGRO/NOIR  
 G. - GREEN/VERDE/VERT  
 W. - WHITE/BLANCO/BLANC  
 R. - RED/ROJO/ROUGE  
 O. - ORANGE/NARANJA/ORANGE  
 Y. - YELLOW/AMARILLO/JAUNE  
 BR. - BROWN/MORENO/BRUN  
 BL. - BLUE/AZUL/BLEU

CODE CODIGO CODE	GAUGE MEDIDA CALIBRE	TEMP.°C	CSA	UL
1	18	125	CL1251	3173
2	16	125	CL1251	3173
3	14	125	CL1251	3173
4	12	125	CL1251	3173
5	18	150	EXL-150	3321
6	16	150	EXL-150	3321
7	14	150	EXL-150	3321
8	12	150	EXL-150	3321
9	10	150	EXL-150	3321
10	18	200	SEW-1	3122
11	16	200	SEW-1	3122
12	12	250		3252
13	16	250		3252
14	20	150	EXL-150	3321
15	8	150	EXL-150	3321
16	8	60		
17	10	60		
18	10	200	SEW-1	3122
19	20	125	CL1251	3173

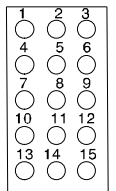
SW. A  
 LATCH MOTOR  
 MOTOR DE CERROJO  
 MOTEUR VERROU



CONNECTOR  
 CONECTOR  
 CONNECTEUR  
 A



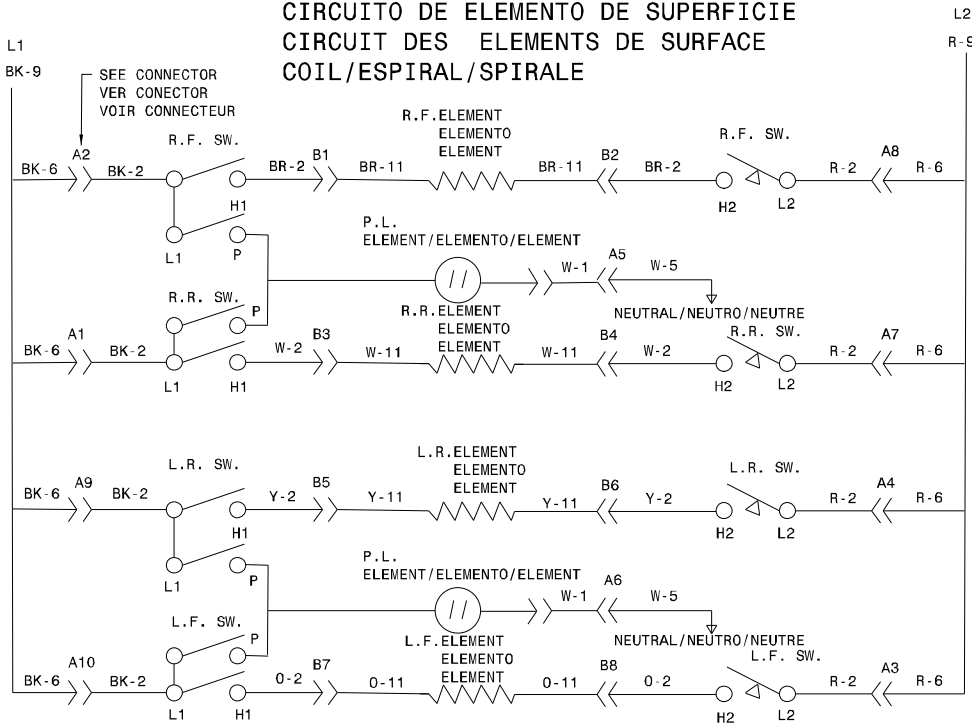
CONNECTOR  
 CONECTOR  
 CONNECTEUR  
 B



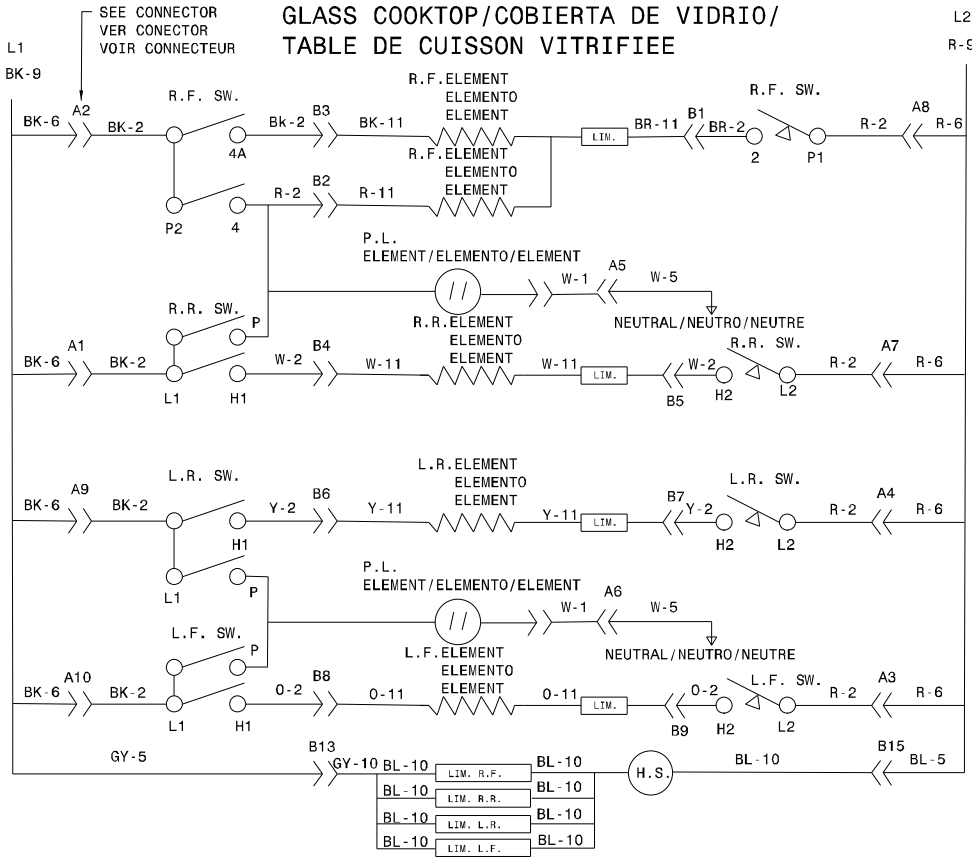
**CAUTION: DISCONNECT CURRENT BEFORE REMOVING REAR COVER.**  
**ATENCIÓN: CORTAR EL CORRIENTE ANTES DE REALIZAR EL MANTENIMIENTO DEL ELECTRODOMESTICO.**  
**ATTENTION: COUPEZ L'ALIMENTATION AVANT D'EFFECTUER LA REPARATION.**

**318271907 REV:C**

**SURFACE-ELEMENT-CIRCUIT**  
**CIRCUITO DE ELEMENTO DE SUPERFICIE**  
**CIRCUIT DES ELEMENTS DE SURFACE**  
**COIL/ESPIRAL/ SPIRALE**



**SURFACE-ELEMENT-CIRCUIT**  
**CIRCUITO DE ELEMENTO DE SUPERFICIE**  
**CIRCUIT DES ELEMENTS DE SURFACE**  
**GLASS COOKTOP/COBIERTA DE VIDRIO/**  
**TABLE DE CUISSON VITRIFIEE**



**LEGEND/LEYENDA/LEGENDE**

- SW. - SWITCH/INTERRUPTOR/INTERRUPTEUR
- R.F. - RIGHT FRONT/FRENTE DERECHO/AVANT DROIT
- R.R. - RIGHT REAR/TRASERO DERECHO/ARRIERE DROIT
- L.F. - LEFT FRONT/FRENTE IZQUIERDO/AVANT GAUCHE
- L.R. - LEFT REAR/TRASERO IZQUIERDO/ARRIERE GAUCHE
- LIM. - LIMITOR/LIMITADOR/LIMITEUR
- H.S. - HOT SURFACE/SUPERFICIE CALIENTE/SURFACE CHAUDE
- P.L. - PILOT LIGHT/LAMPARA PILOTO/LAMPE TEMOIN

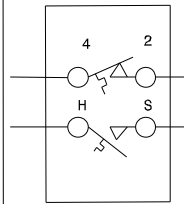
**COLOR CODE/CODIGOS/COLEUR**

- BK. - BLACK/NEGRO/NOIR
- G. - GREEN/VERDE/VERT
- W. - WHITE/BLANCO/BLANC
- R. - RED/ROJO/ROUGE
- O. - ORANGE/NARANJA/ORANGE
- Y. - YELLOW/AMARILLO/JAUNE
- BR. - BROWN/MORENO/BRUN
- BL. - BLUE/AZUL/BLEU

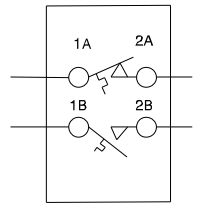
**WIRE GAUGE TEMP. °C CSA UL**  
**ALAMBRE MEDIDA FIL CALIBRE**

WIRE GAUGE	TEMP. °C	CSA	UL
1	18	125	CL1251 3173
2	16	125	CL1251 3173
3	14	125	CL1251 3173
4	12	125	CL1251 3173
5	18	150	EXL-150 3321
6	16	150	EXL-150 3321
7	14	150	EXL-150 3321
8	12	150	EXL-150 3321
9	10	150	EXL-150 3321
10	18	200	SEW-1 3122
11	16	200	SEW-1 3122
12	12	250	3252
13	16	250	3252
14	20	150	EXL-150 3321
15	8	150	EXL-150 3321
16	8	60	
17	10	60	
18	10	200	SEW-1 3122
19	20	125	CL1251 3173

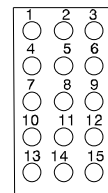
**LIMITER/LIMITADOR/**  
**LIMITEUR**  
**E.G.O./A.K.O.**



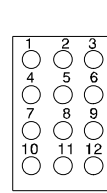
**LIMITER/LIMITADOR**  
**LIMITEUR**  
**CERAMASPEED/EIKA**



**CONNECTOR/EMPALME/**  
**CONNECTEUR**  
**B OR C**



**CONNECTOR/EMPALME/**  
**CONNECTEUR**  
**A**



**NOTE/NOTA/NOTE:**  
 COMPONENTS SHOWN ARE NOT NECESSARILY USED ON ALL MODELS.  
 ESTOS COMPONENTES NO DEBEN DE APARECER EN TODOS LOS MODELOS.  
 LES COMPOSANTES MONTREES NE SONT PAS NECESSAIREMENT UTILISEES SUR TOUS LES MODELES.

**CAUTION: DISCONNECT CURRENT BEFORE REMOVING REAR COVER.**  
**ATENCIÓN: CORTAR EL CORRIENTE ANTES DE REALIZAR EL MANTENIMIENTO DEL ELECTRODOMESTICO.**  
**ATTENTION: COUPEZ L'ALIMENTATION AVANT D'EFFECTUER LA REPARATION.**

**REV: B**