

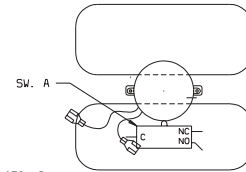
**COLORS / COLOR / COULEURS**

- BK- BLACK/NEGRO/NOIR
- W- WHITE/BLANCO/BLANC
- O- ORANGE/NARANJA/ORANGE
- BR-BROWN/MORENO/BRUN
- PK-PINK/ROSA/ROSE
- V- VIOLET/VIOLETA/VIOLET
- G- GREEN/VERDE/VERT
- R- RED/ROJO/ROUGE
- Y- YELLOW/AMARILLO/JAUNE
- BL- BLUE/AZUL/BLEU
- BR/W-BROWN/WHITE // MORENO/BLANCO // BRUN/BLANC
- BL/W-BLUE/WHITE // AZUL/BLANCO // BLEU/BLANC

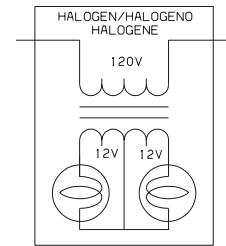
**CODE/CODIGO/CODE**

**STYLE**

CODE	GAUGE/MED. CALIBRE	TEMP. °C	CSA	UL
1	18	125	CL1251	3173
2	16	125	CL1251	3173
3	14	125	CL1251	3173
4	12	125	CL1251	3173
5	18	150	EXL-150	3321
6	16	150	EXL-150	3321
7	14	150	EXL-150	3321
8	12	150	EXL-150	3321
9	10	150	EXL-150	3321
10	18	200	SEW-1	3122
11	16	200	SEW-1	3122
12	12	250		3252
13	16	250		3252
14	20	150	EXL-150	3321
15	8	150	EXL-150	3321
16	8	60		
17	10	60		



SW. A  
MOTOR LATCH SW.  
INTER. DE MOTOR DE CERROJO  
INTER. MOTEUR VERROU



**CAUTION:** DISCONNECT POWER BEFORE SERVICING UNIT.  
**ATENCIÓN:** CORTAR EL CORRIENTE ANTES DE REALIZAR EL MANTENIMIENTO DEL ELECTRODOMESTICO.  
**ATTENTION:** COUPEZ L'ALIMENTATION AVANT D'EFFECTUER LA REPARATION.