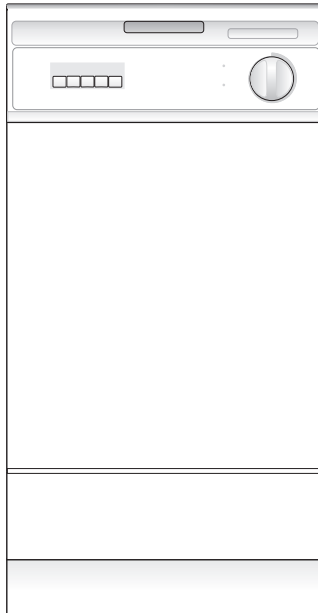


FACTORY PARTS CATALOG DISHWASHER

Frigidaire

 **Electrolux**



PRODUCT NO.	BASE MODEL NO.	SERIES	COLOR
FDR252RBB1	FDR252RB	18" Built-in	black
FDR252RBS1	FDR252RB	18" Built-in	white
MARKET			
North America			

SERVICE DATA SHEET # - 154443001
 OWNER'S GUIDE # - 154418701
 INSTALLATION INSTRUCTIONS # - 154418801
 ENERGY GUIDE LABEL # - 154399018

**18" Built-In
DISHWASHER**

**Model No.
FDR252RB**

 **Electrolux**

ELECTROLUX HOME PRODUCTS, INC.
 P.O. Box 212378, Augusta, GA 30917

Publication No.

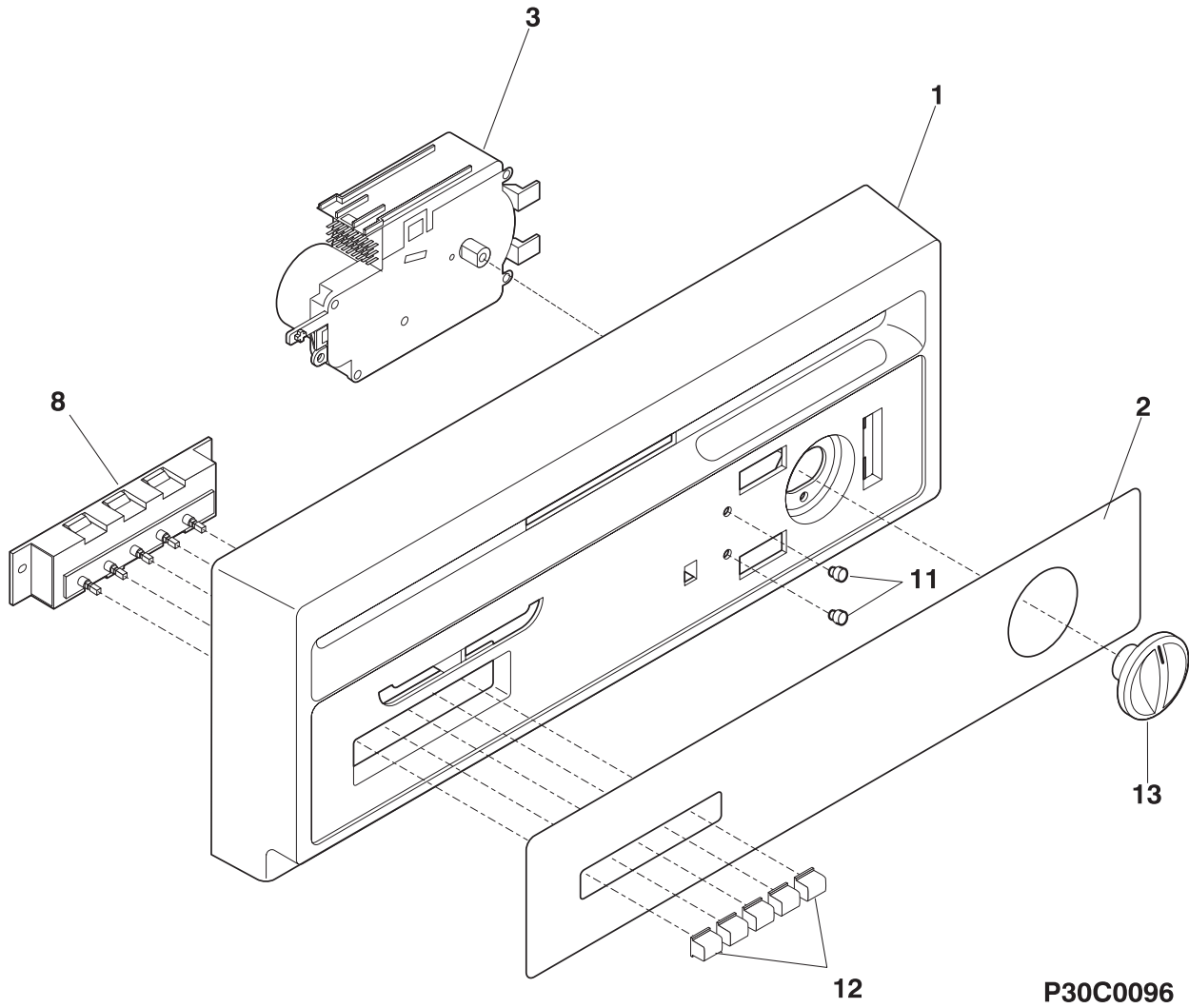
5995380499

021030

-EN/SERVICE /ECL
 821

©2002 Electrolux Home Products, Inc.
 All rights reserved

CONTROL PANEL

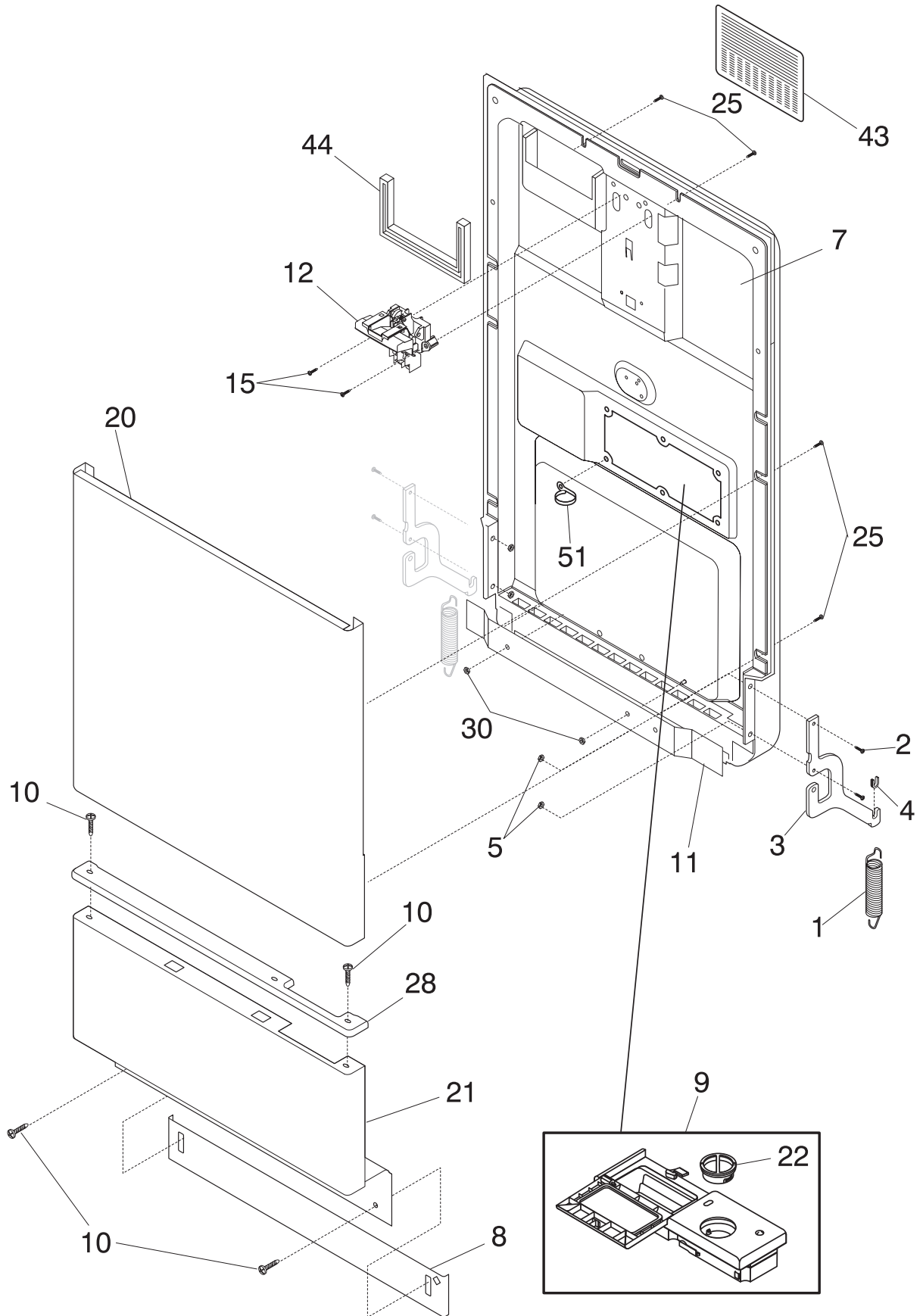


CONTROL PANEL

A = FDR252RB (FDR252RBS1)
B = FDR252RB (FDR252RBB1)

POS. NO	PART NO		DESCRIPTION
1	154357602	A -	Panel,control ,white
1	154357601	- B	Panel,control ,black
2	154418601	A -	Insert,control panel ,white
2	154418603	- B	Insert,control panel ,black
3 #	154437301	A B	Timer
3*	154131203	A B	Shield,timer
3*	154095701	A B	Screw,thread rolling ,(2) ,timer
8 #	154220401	A B	Switch,selector ,5 button
8*	154242201	A B	Shield,switch
8*	5303318719	A B	Screw,mtg.
11	5304428149	A B	Lens,light
12	154236502	A -	Pushbutton,white
12	154236501	- B	Pushbutton,black
13	154239504	A -	Knob,timer ,white
13	154239509	- B	Knob,timer ,black
* #	154437901	A B	Wiring Harness
*	154416601	A -	Shield,wire ,white
*	154416603	- B	Shield,wire ,black
*	154399018	A B	Label,energy guide

DOOR

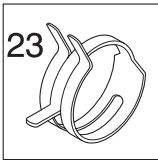
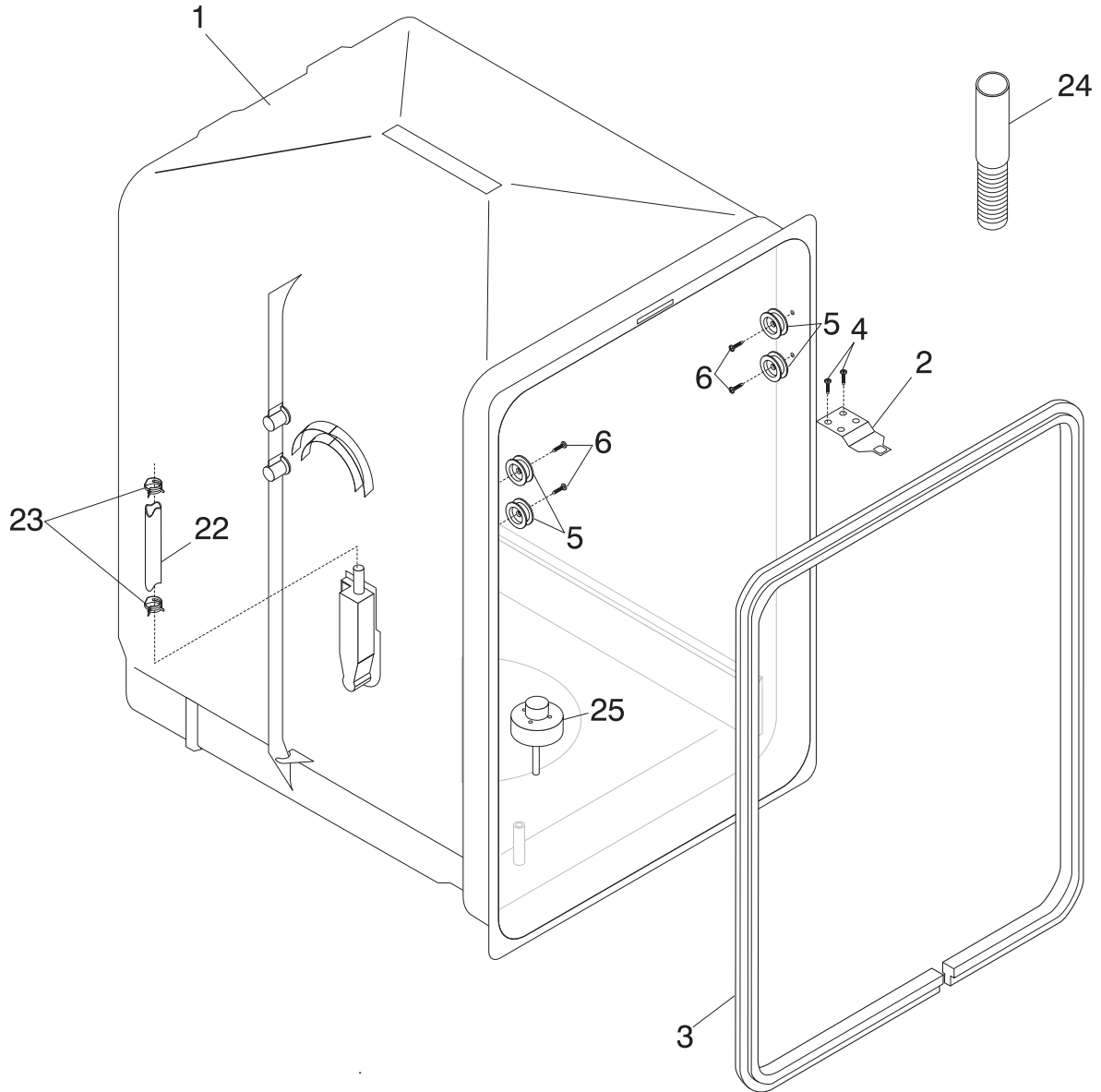


P30B0030

DOOR

A = FDR252RB (FDR252RBS1)
B = FDR252RB (FDR252RBB1)

POS. NO	PART NO		DESCRIPTION
1	154237401	A B	Spring,door ,(2)
2	154093301	A B	Screw,arm assy ,(4)
3	5303270031	A B	Arm Assy,RH & LH
3*	154221401	A B	Cover,arm assy
3*	5303298513	A B	Pin,arm assy
4	5300805884	A B	Pad,door spring
5	154079601	A B	Nut,arm assy ,and handle mtg.
7	154352201	A B	Door,inner assy
8	154411701	A -	Toeplate,adjustable ,white
8	154411703	- B	Toeplate,adjustable ,black
9	154230103	A B	Dispenser,det/rinse aid ,includes #22
9*	154294701	A B	Screw,#7 plas .375 ,(6) ,disp. assy.
10	154419401	A -	Screw,access panel ,white
10	154419403	- B	Screw,access panel ,black
11 #	154221101	A -	Baffle,door ,white
11 #	154221103	- B	Baffle,door ,black
12 #	154361201	A -	Latch assy,white
12 #	154361203	- B	Latch assy,black
15	154103702	A B	Screw,latch mtg ,(2)
20	154416101	A -	Panel,outer door assy ,white
20	154416103	- B	Panel,outer door assy ,black
21	154399501	A -	Panel,access ,white
21	154399503	- B	Panel,access ,black
22	154388801	A B	Cap,Rinse aid
28	154400301	A -	Trim,access panel ,white
28	154400303	- B	Trim,access panel ,black
30	154026601	A B	Speednut,door baffle
43	154229301	A B	Cover,vent
43*	154229401	A B	Screw,vent cover ,(2)
44	154221001	A B	Gasket,vent cover
51	154320301	A B	Clamp,drip loop ,wire
* #	154227808	A B	Thermostat,temp boost
*	154395501	A B	Retainer,thermostat



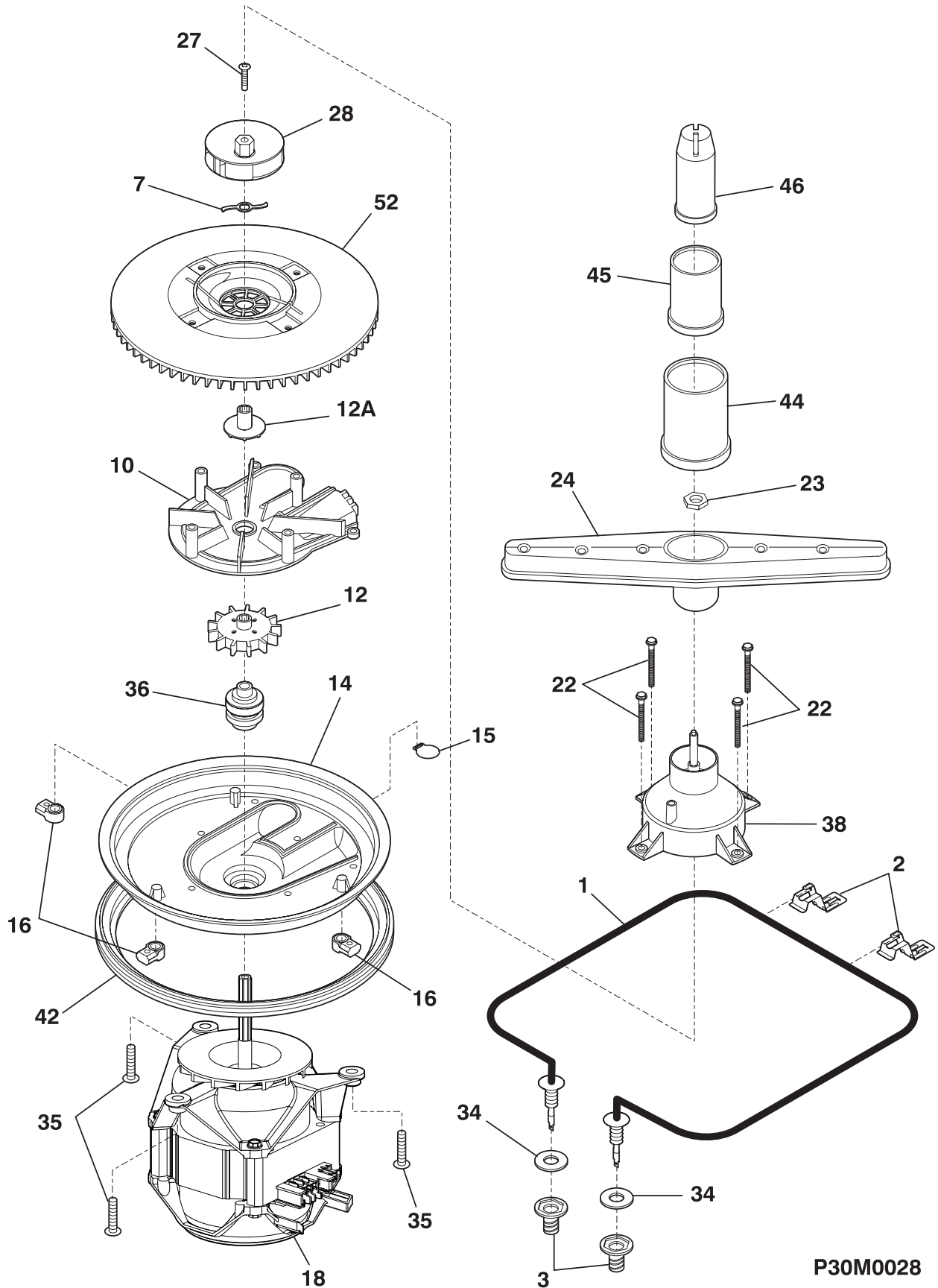
P30U0017

TUB

A = FDR252RB (FDR252RBS1)
B = FDR252RB (FDR252RBB1)

POS. NO	PART NO		DESCRIPTION
1 #	154218701	A B	Tub assy,w/gasket
2	154429101	A B	Strike,door
3 #	154219501	A B	Gasket,tub
4	154200601	A B	Screw,#10-16 x 3/8
5	154333902	A B	Roller,tub
6	5303943103	A B	Screw,w/washer ,(8)
22	154239801	A B	Tubing,water inlet
23	5303318539	A B	Clamp,tubing ,(2)
24 #	154411003	A B	Hose,drain
25 #	154209701	A B	Float
*	154238301	A B	Insulation,tub
*	5300807270	A B	Screw,(2) ,countertop mtg.

MOTOR & PUMP



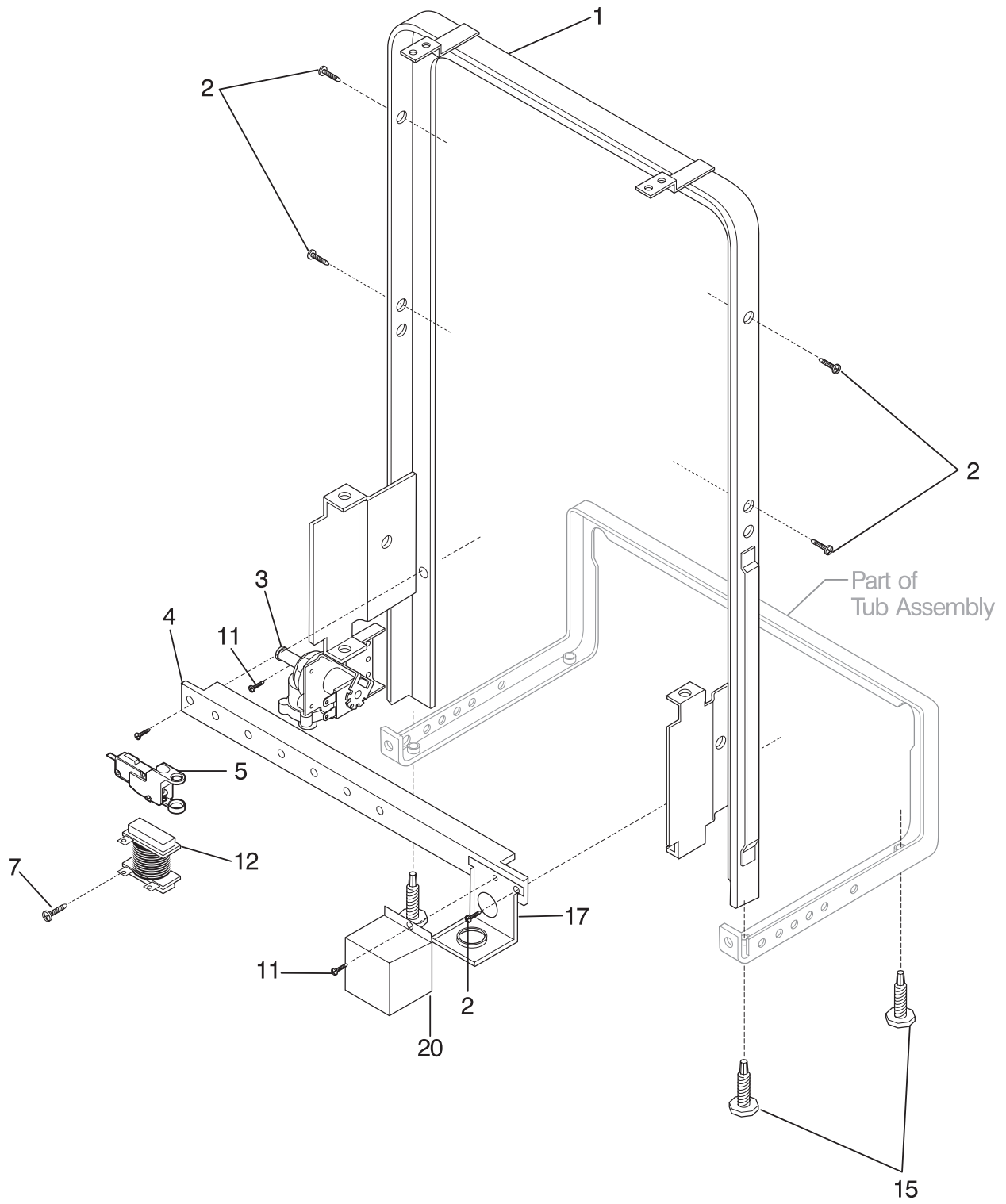
P30M0028

MOTOR & PUMP

A = FDR252RB (FDR252RBS1)
B = FDR252RB (FDR252RBB1)

POS. NO	PART NO		DESCRIPTION
1 #	154220901	A B	Heater
1*	154289801	A B	Shield,heater terminal
2	154359701	A B	Bracket,heater ,(2)
3	154106201	A B	Nut,heater ,(2)
7	154365101	A B	Macerator
10	154365302	A B	Cover,volute
12	154365401	A B	Impeller,lower drain
12A	154365501	A B	Slinger,pump
14	154364802	A B	Housing,pump
15 #	154367701	A B	Check valve
16	154246502	A B	Retainer,sump
18 #	154384301	A B	Motor
22	154200201	A B	Screw,pump housing
23	154234301	A B	Nut,spray arm
24	154219201	A B	Spray arm,lower
24*	154232601	A B	Shield,heat ,spray arm
27	154377501	A B	Screw,upper impeller
28	154370601	A B	Impeller,upper
34	154064901	A B	Washer,insulating
35	154200901	A B	Screw,motor mtg
36	154387601	A B	Sleeve & seal assy.
38	154367402	A B	Diffuser
42	154365601	A B	Gasket,pump
44	154122502	A B	Base,tower
45	154122601	A B	Middle,tower
46	154122701	A B	Tip,tower
52	154365201	A B	Cover,pump housing
*	154380601	A B	Clamp,hose ,(1)
*	154200601	A B	Screw,#10-16 x 3/8

FRAME



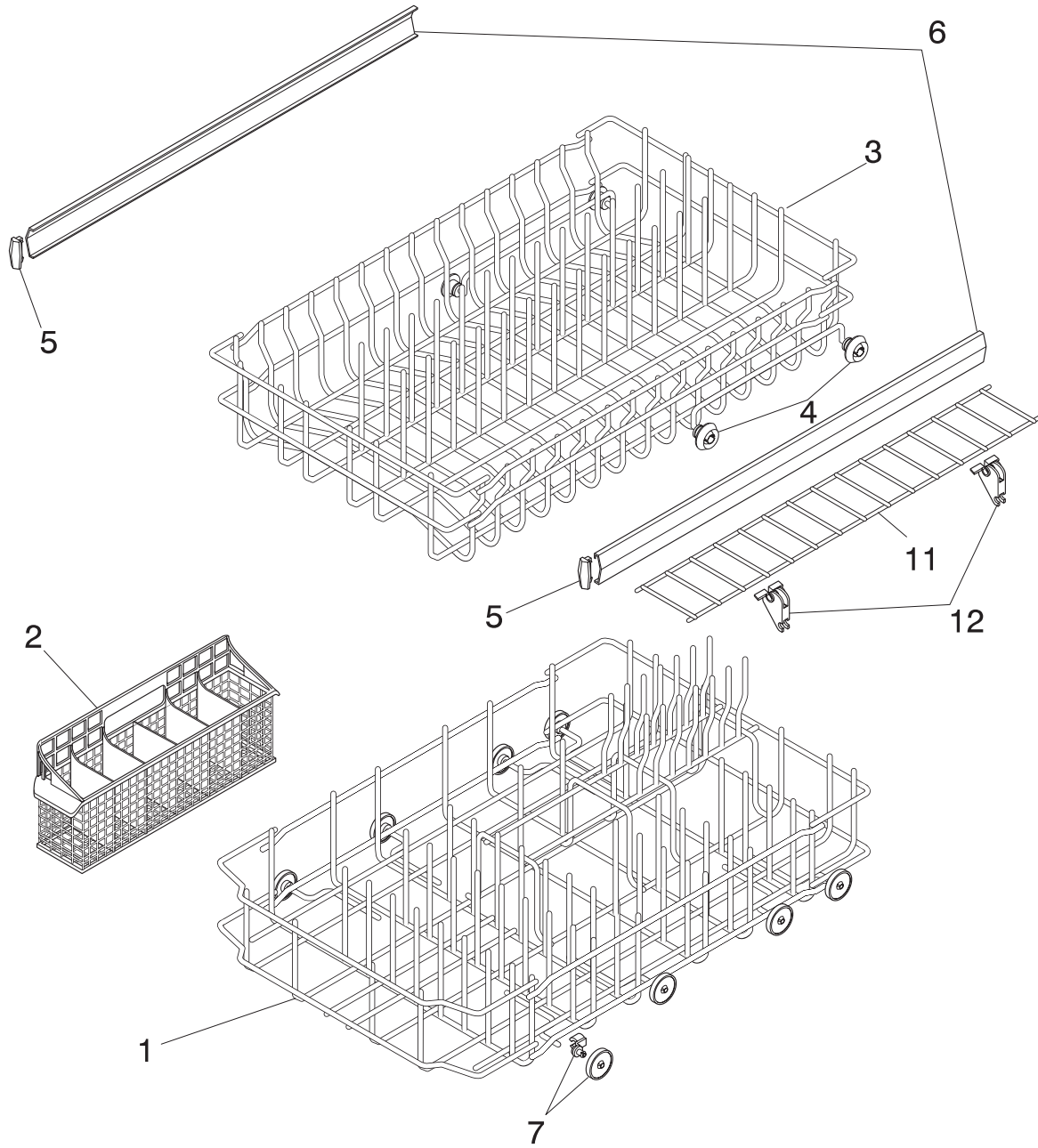
P30F0024

FRAME

A = FDR252RB (FDR252RBS1)
B = FDR252RB (FDR252RBB1)

POS. NO	PART NO		DESCRIPTION
1	154218801	A B	Front frame assy
2	154200601	A B	Screw,#10-16 x 3/8
2*	154041001	A B	Screw,plask #1 ,10-10 x 9/16
3 #	154373303	A B	Valve,water
4	154219101	A B	Brace,front frame
5	154408701	A B	Switch assy,float
7	5300804672	A B	Screw,start relay
11	154200701	A B	Screw,#10-32 x 3/8
12 #	154380001	A B	Relay,motor start
15	154419301	A B	Screw,leveling
17	154112901	A B	Bracket,junction box
20	154128304	A B	Cover,junction box
*	5300807270	A B	Screw,(2) ,countertop mtg.

RACKS



P30R0021

RACKS

A = FDR252RB (FDR252RBS1)
B = FDR252RB (FDR252RBB1)

POS. NO	PART NO		DESCRIPTION
1	154239101	A B	Rack assy,lower
2	5300808994	A B	Basket,silverware
3	154237502	A B	Rack assy,upper
4	5304407064	A B	Wheel & bushing assy,upper rack
5	5300809927	A B	Cap,slide ,(4)
6	154232701	A B	Slide,rack ,(2)
7	154174501	A B	Wheel & bracket assy,lower rack
11	154225203	A B	Shelf,cup
12	154352401	A B	Bracket,cup shelf ,(4)