

Frigidaire

Factory Parts Catalog

| | |
|---------------------------|--------------|
| Product No. | GLWS1439FS1 |
| Series | Frig Gallery |
| Color | white |
| Volts | 120 |
| Wiring Diagram | 134755500 |
| Owner's Guide | 134752500 |
| Installation Instructions | 134752400 |
| Operating Instructions | 134753100 |
| Energy Guide | 134757200 |

 **Electrolux**

Electrolux Major Appliances
North & Latin America
P.O. BOX 212378
AUGUSTA, GA 30917

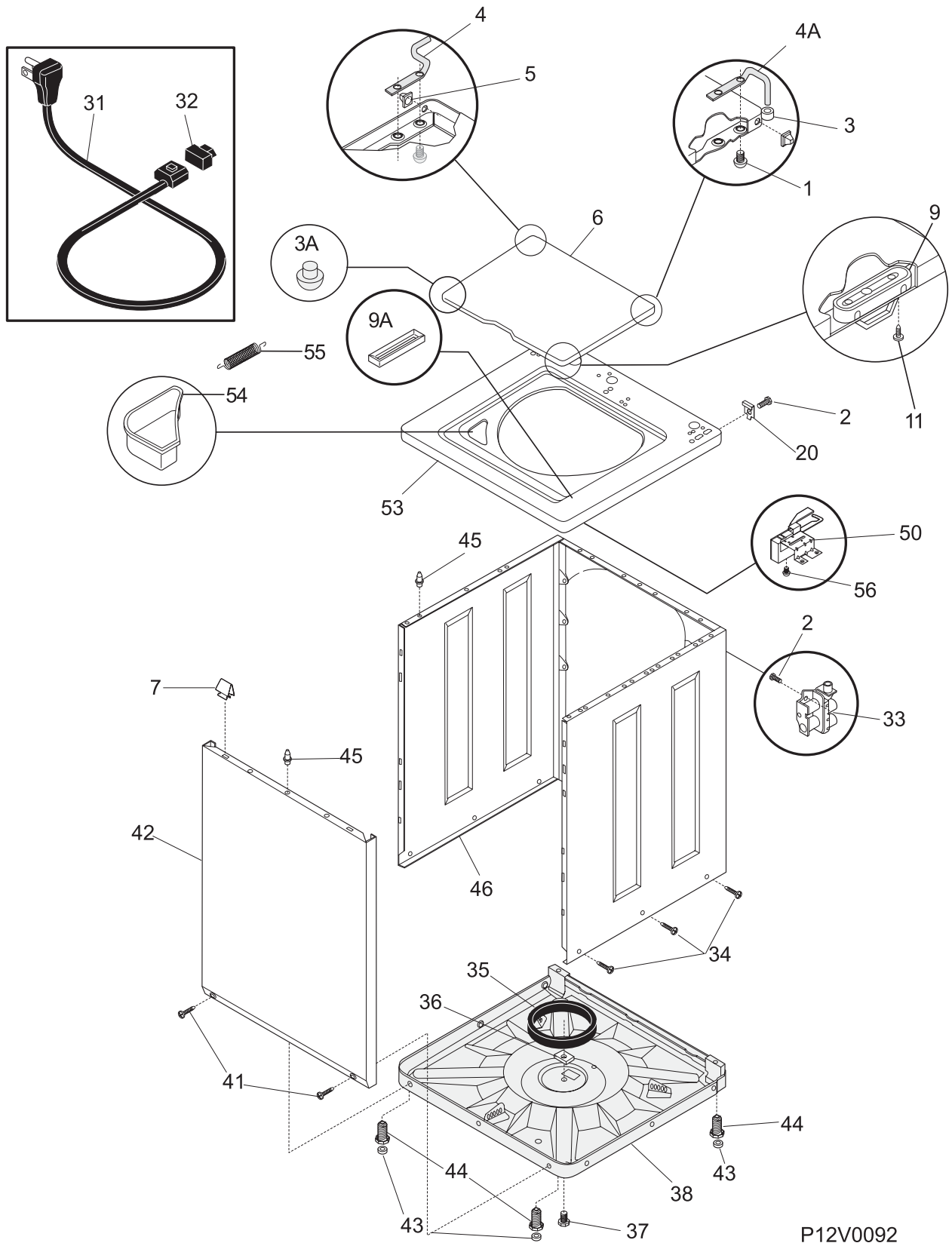
Publication No.
5995492104
07/06/05
(EN/SERVICE/WTC)
361

**TOP-LOAD WASHING
MACHINE**

Model No.
GLWS1439F

Copyright © 2007 Electrolux Home Products, Inc.
All rights reserved.

CABINET/TOP

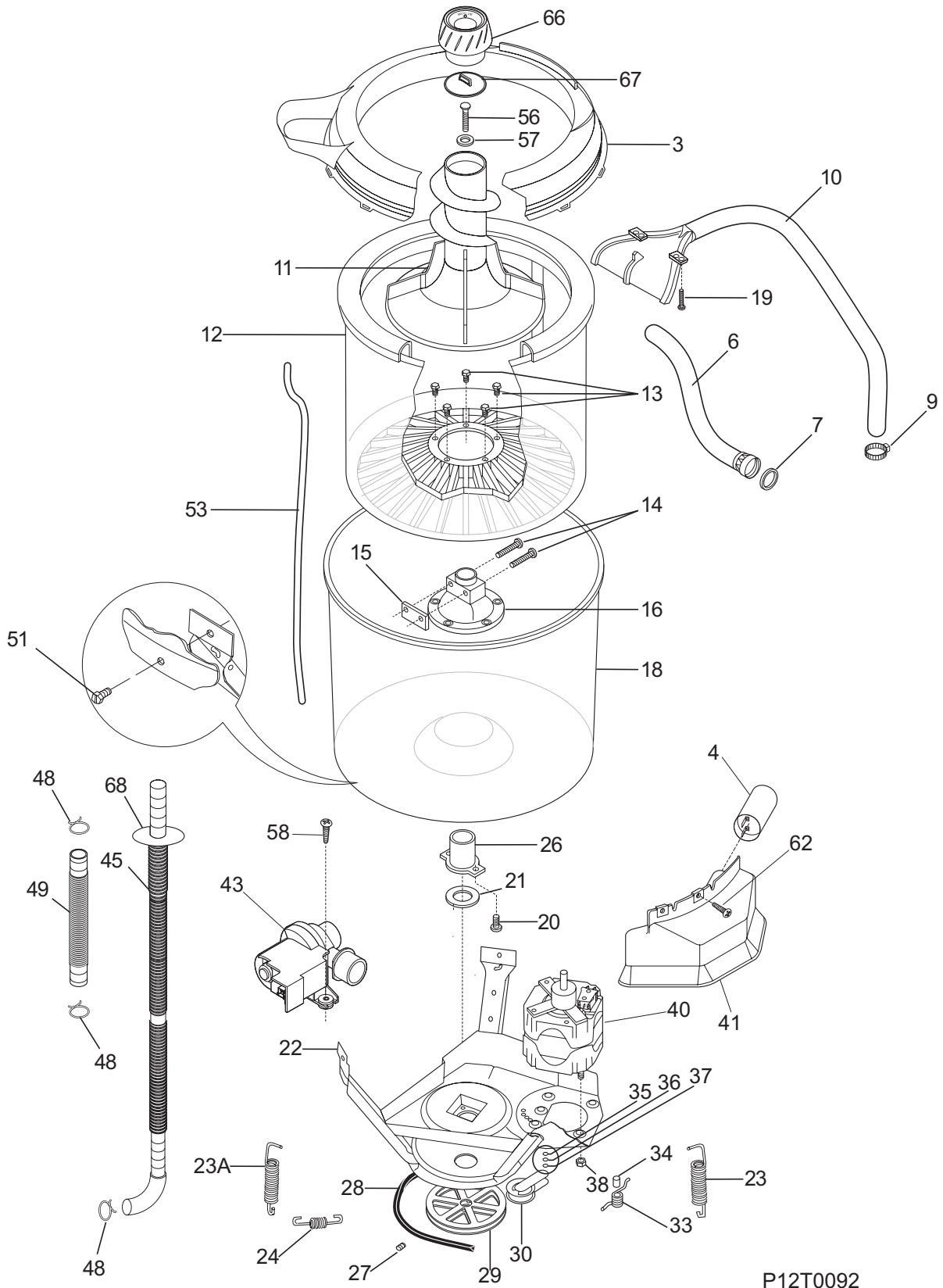


P12V0092

CABINET/TOP

| POS. NO | PART NO. | DESCRIPTION |
|---------|------------|--|
| 1 | 134203900 | Screw, pan hd phillips, 6-32 x 0.337, dog point |
| 2 | 131168200 | Screw, pan head, 8-18B x 0.31 |
| 3 | 131433300 | Bumper, lid hinge |
| 3A | 134075500 | Bumper, lid, front |
| 4 | 131385910 | Hinge Bar, LH |
| 4A | 131374220 | Hinge Bar, RH |
| 5 | 5303208743 | Grommet, hinge |
| 6 | 131374401 | Lid, white |
| 7 | 3205821 | Clip, top-to-front |
| 9 | 131390000 | Lid Strike |
| 9A | 134768500 | Insert, striker plate, lid slot |
| 11 | 3204368 | Screw, lid strike mtg, 6-20B X 0.375 |
| 20 | 5303208751 | Hinge, top panel, cabinet rear |
| 31 # | 134501000 | Power Cord, electric svce |
| 32 | 5303209428 | Bushing, power cord |
| 33 # | 134890600 | Valve, water, 115 V |
| 34 | 131205500 | Screw, cab body, 1/4-14 x 0.625, side-to-base |
| 35 | 5308002385 | Snubber Ring |
| 36 | 3204380 | Shipping Block |
| 37 | 131658900 | Screw, shipping, 1/4-20 x 1.001, yellow, unit base, thread forming |
| 38 | 134773500 | Base Assembly |
| 41 | 131258400 | Screw, 10-16AB x 0.500 |
| 42 | 131104303 | Panel, front, white |
| 43 | 131422100 | Pad, leveling leg |
| 44 | 5303309673 | Screw, leveling leg, with pad |
| 45 | 131346400 | Pin, panel locator |
| 46 | 134046600 | Cabinet Assy, white, back and sides |
| 50 # | 134101800 | Lock, lid, w/ext switch |
| 53 | 131452692 | Panel, white, top |
| 54 | 5303208778 | Dispenser, bleach |
| 55 | 134890500 | Spring, lid assist |
| 56 | 131243700 | Screw, pan head, 8-18AB x 0.375 |

MOTOR/TUB

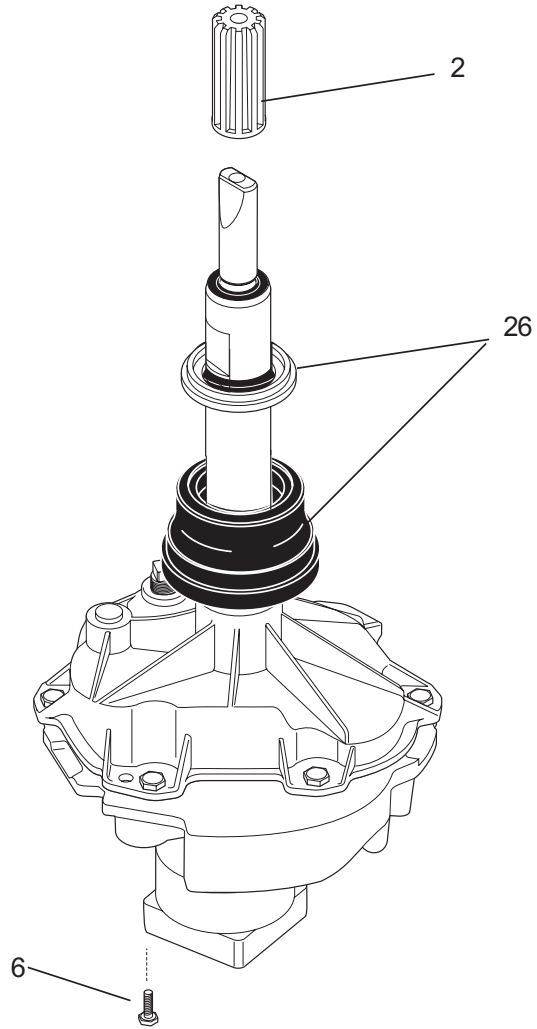
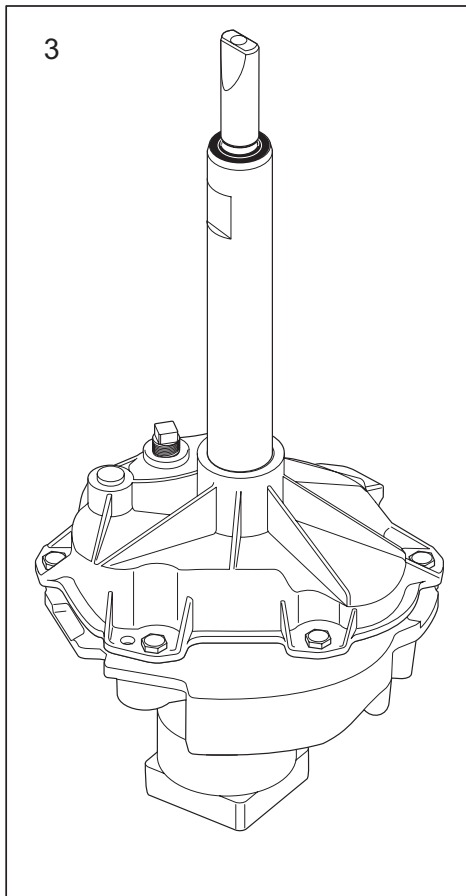


P12T0092

MOTOR/TUB

| POS. NO | PART NO. | DESCRIPTION |
|---------|------------|--|
| 3 | 131551102 | Cover, splash tub, with seal |
| 3* | 131901400 | • Seal, splash cover |
| 4 # | 131212301 | Capacitor, motor |
| 6 | 5303271009 | Hose, inlet, 48 inch long |
| 7 | 5303161296 | Washer, inlet hose |
| 9 | 5303304824 | Clamp |
| 10 | 134211700 | Hose Assy, w/nozzle |
| 11 # | 131605901 | Agitator Assy, dual action |
| 12 | 131221300 | Tub, spin |
| 13 | 5303283293 | Screw, trunion, 5/16-18 x 0.625, (5) |
| 14 | 131192800 | Screw, lockplate, 5/16-18 x 1.625 |
| 15 | 5308001923 | Plate, lock |
| 16 | 131545101 | Trunnion |
| 18 | 131557201 | Tub, splash, w/air dome, brg |
| 19 | 131205300 | Screw, 10-16 x 0.750 |
| 20 | 3205150 | Screw, tub bearing, 8-12B x 0.750 |
| 21 | 5308002401 | Washer, spin bearing, upper |
| 22 | 131373610 | Leg & Dome Assy |
| 23 | 134886600 | Spring, vertical, short |
| 23* | 5303212877 | Insert, spring adjuster, vertical |
| 23A | 134885900 | Spring, vertical |
| 24 | 131373900 | Spring, horizontal |
| 26 # | 3204405 | Bearing, outer tub |
| 27 | 5303304825 | Screw, set, hex hd cup, 5/16-18 x 0.85, xmsn pulley, hex head cup pt |
| 28 # | 134511600 | V-Belt, washer drive, standard 4L |
| 29 # | 131498301 | Pulley, xmsn drive |
| 30 # | 131862900 | Idler Arm Assy, VAW, with pulley |
| 33 | 3204425 | Spring, torsional |
| 34 | 3204426 | Sleeve, idler pivot |
| 35 | 3161433 | Ring, retaining |
| 36 | 5303261031 | Washer, pivot shaft |
| 37 | 5303161306 | Washer, spring type |
| 38 | 5303318708 | Nut, hex flange, motor mounting |
| 40 # | 134159500 | Motor, 3/4 hp, 2 speed, with pulley |
| 41 | 131513300 | • Shield, motor assy, w/speed nuts |
| 41 | 5303283052 | • Speed Nut, motor shield, steel clip |
| 41 # | 131715800 | Shield, motor assy, w/capacitor, nut |
| 43 # | 134740500 | Pump, drain |
| 45 # | 134592700 | Hose, drain |
| 45* | 131453000 | Bushing, snap-in |
| 45* | 131663500 | Cushion, drain hose, base |
| 45* | 134261300 | Clip, drain hose, push-mount |
| 45* | 134745300 | Clip, drain hose |
| 48 | 131306234 | Clamp, hose, wire |
| 49 # | 131494800 | Hose, pump to tub |
| 51 | 134164400 | Screw, hex washer head, 5/16-18 x 0.625 |
| 53 | 5300771996 | Tube, pressure, vinyl |
| 56 | 131468900 | Screw, agitator mtg, 5/16-18 x 1.250 |
| 57 | 131339600 | Spacer, agitator mtg, rubber |
| 58 | 134160900 | Screw, washer hd, 10-16AB X 0.75 |
| 62 | 131258400 | Screw, 10-16AB x 0.500 |
| 66 | 131624500 | Agitator Cap Assy, dispenser cup, dual action |
| 67 | 131606210 | Mechanism, disp cap assy, dual action |
| 68 | 131707800 | Ring, drain hose |
| 68* | 5303309503 | Clip, drain hose, back sheet |

TRANSMISSION

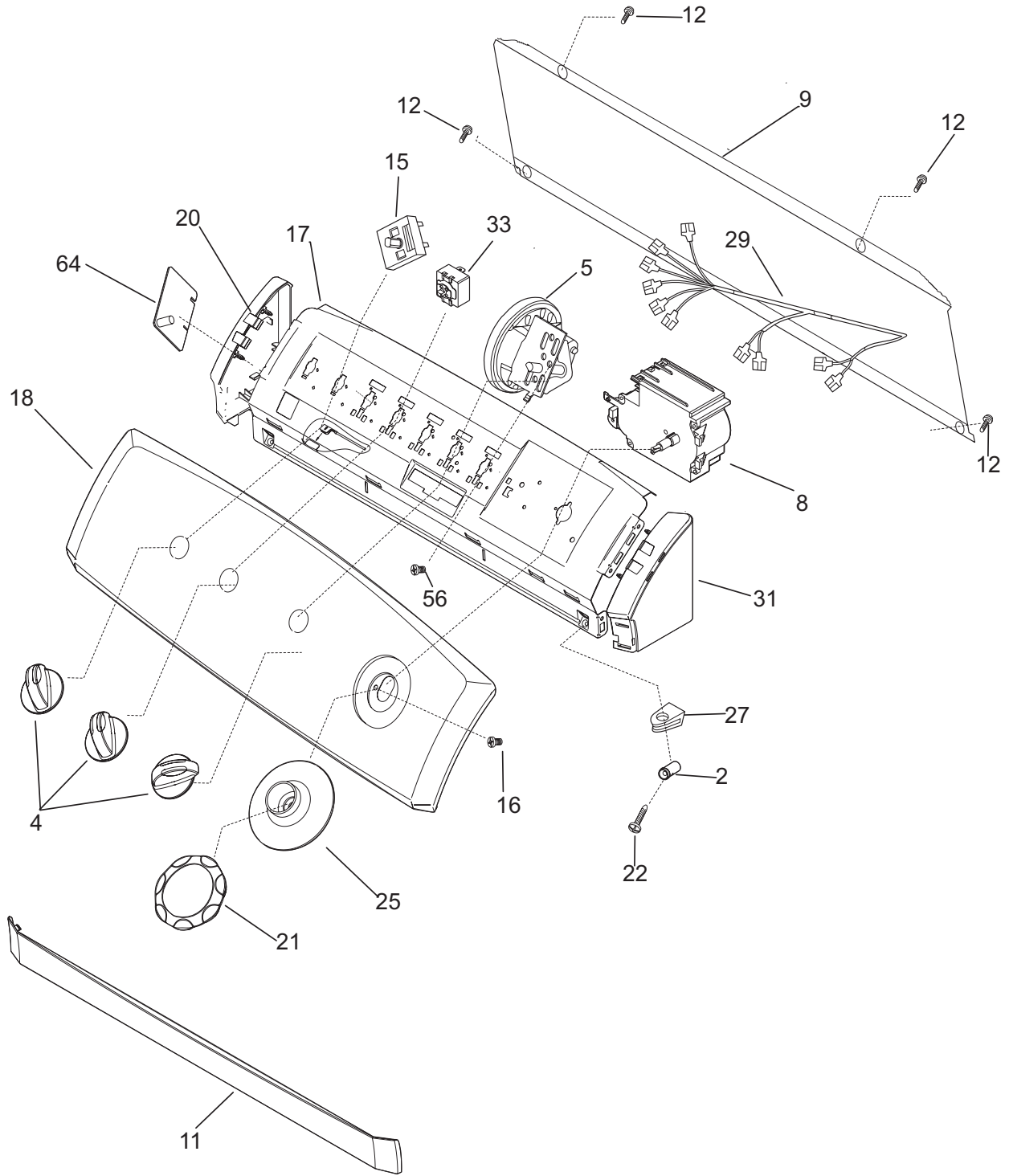


P12M0014

TRANSMISSION

| POS. NO | PART NO. | DESCRIPTION |
|---------|------------|--|
| 2 # | 134418700 | Hub, drive, agitator |
| 3 # | 134737100 | Transmission, service kit |
| 6 | 134197900 | Screw, hex washer head, 1/4-20 x 0.437 |
| 26 # | 5303279394 | Seal Assy, tub, transmission |

CONTROL/PANEL



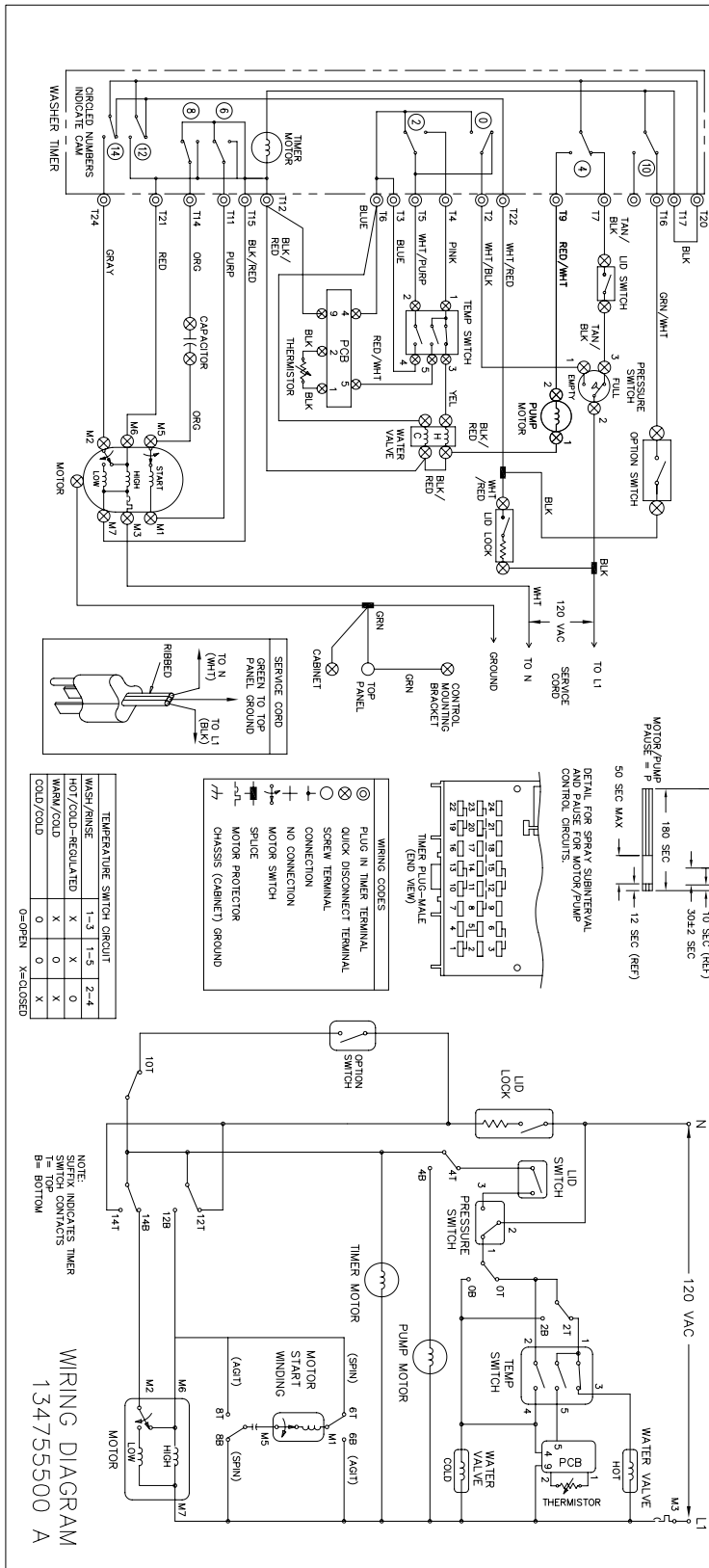
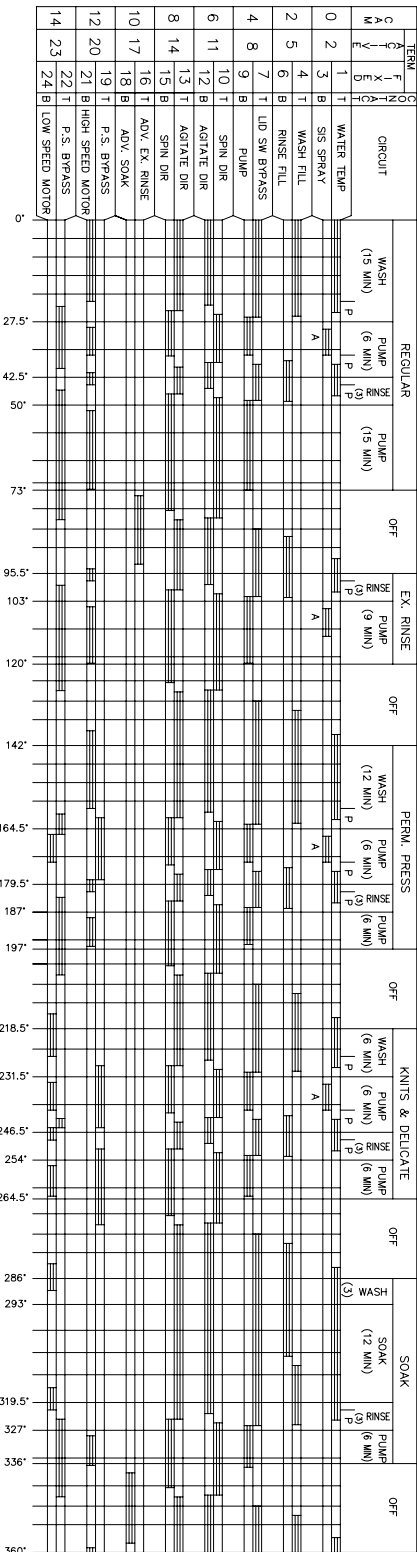
P12C0376

CONTROL/PANEL

| POS. NO | PART NO. | DESCRIPTION |
|---------|-----------|--|
| 2 | 134096100 | Spacer, console mtg |
| 4 | 134034910 | Knob, rotary, white |
| 5 # | 134421000 | Switch, pressure, infinite |
| 8 # | 134049500 | Timer, 5-off |
| 9 | 131992910 | Panel, backsheet, console |
| 11 | 134019900 | Closure, console trim, white, front |
| 12 | 131168200 | Screw, pan head, 8-18B x 0.31 |
| 15 # | 134403500 | Switch, temp selector, 3 position |
| 16 | 131477001 | Screw, pan head, 10-16AB x 0.375 |
| 17 | 131993040 | Bracket, control mtg. |
| 18 | 134831800 | Panel, trimplate, white, console front |
| 20 | 134019610 | End Cap, white, LH |
| 21 | 134035200 | Knob, timer, white, assy |
| 22 | 131266330 | Screw, 8-18 x 1.250 |
| 25 | 134035100 | Pointer, timer knob, white, dark gray ind |
| 27 | 131197000 | Clip, console mtg |
| 29 | 134895500 | Wiring Harness, washer |
| 31 | 134019600 | End Cap, white, RH |
| 33 # | 131243200 | Switch, 2 position |
| 56 | 131243800 | Screw, pan hd locking, 8-32CA x 0.375, cup point |
| 64 # | 134810610 | Control Board, temperature, ATC |

WIRING DIAGRAM

CAUTION: DISCONNECT ELECTRIC CURRENT BEFORE SERVICING



WIRING DIAGRAM

MISE EN GARDE: METTRE HORS TENSION AVANT D'EFFECTUER

